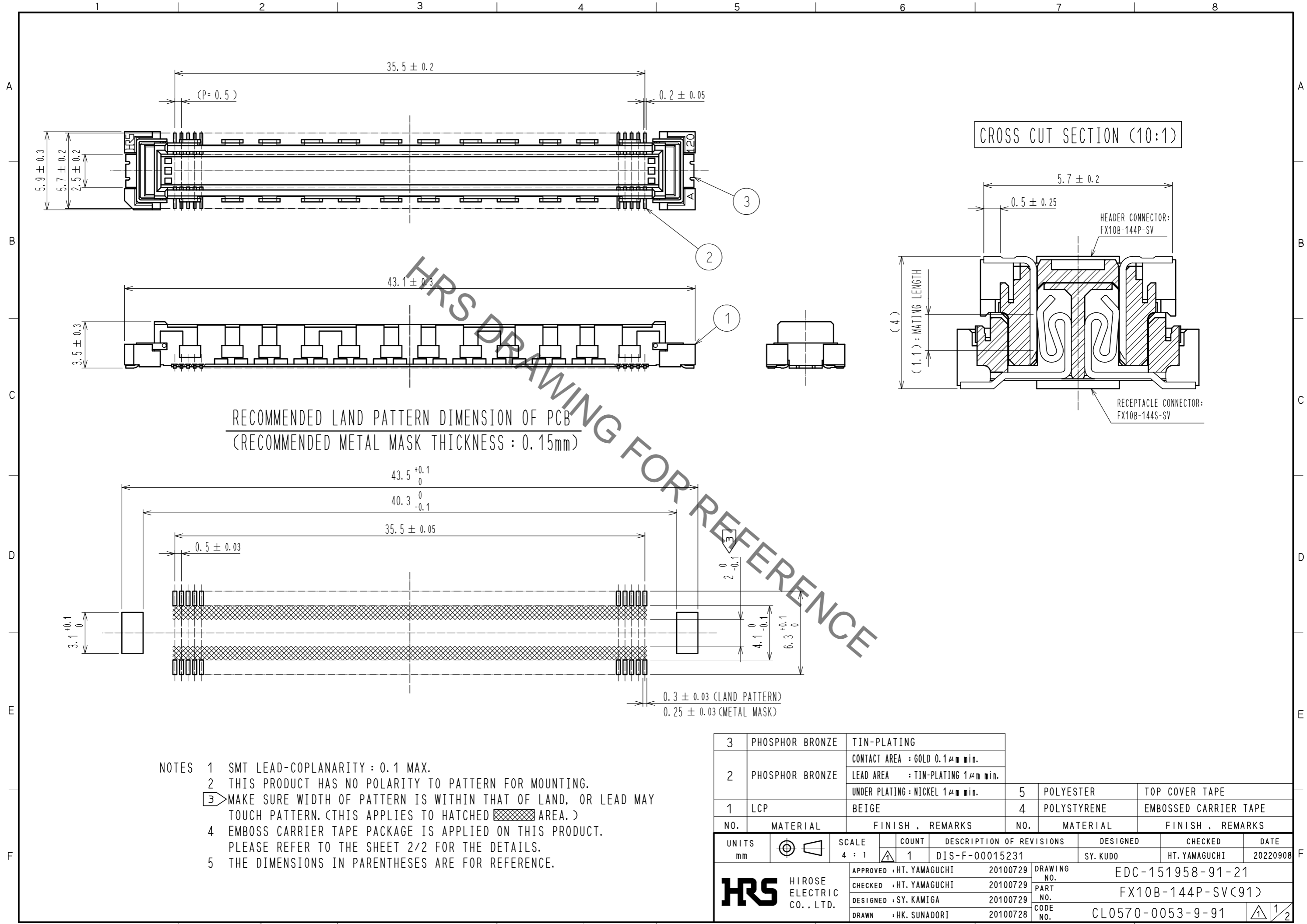


Apr.1.2023 Copyright 2023 HIROSE ELECTRIC CO., LTD. All Rights Reserved.
 In case of consideration for using Automotive equipment / device which demand high reliability, kindly contact our sales window correspondents.



RECOMMENDED LAND PATTERN DIMENSION OF PCB
 (RECOMMENDED METAL MASK THICKNESS : 0.15mm)

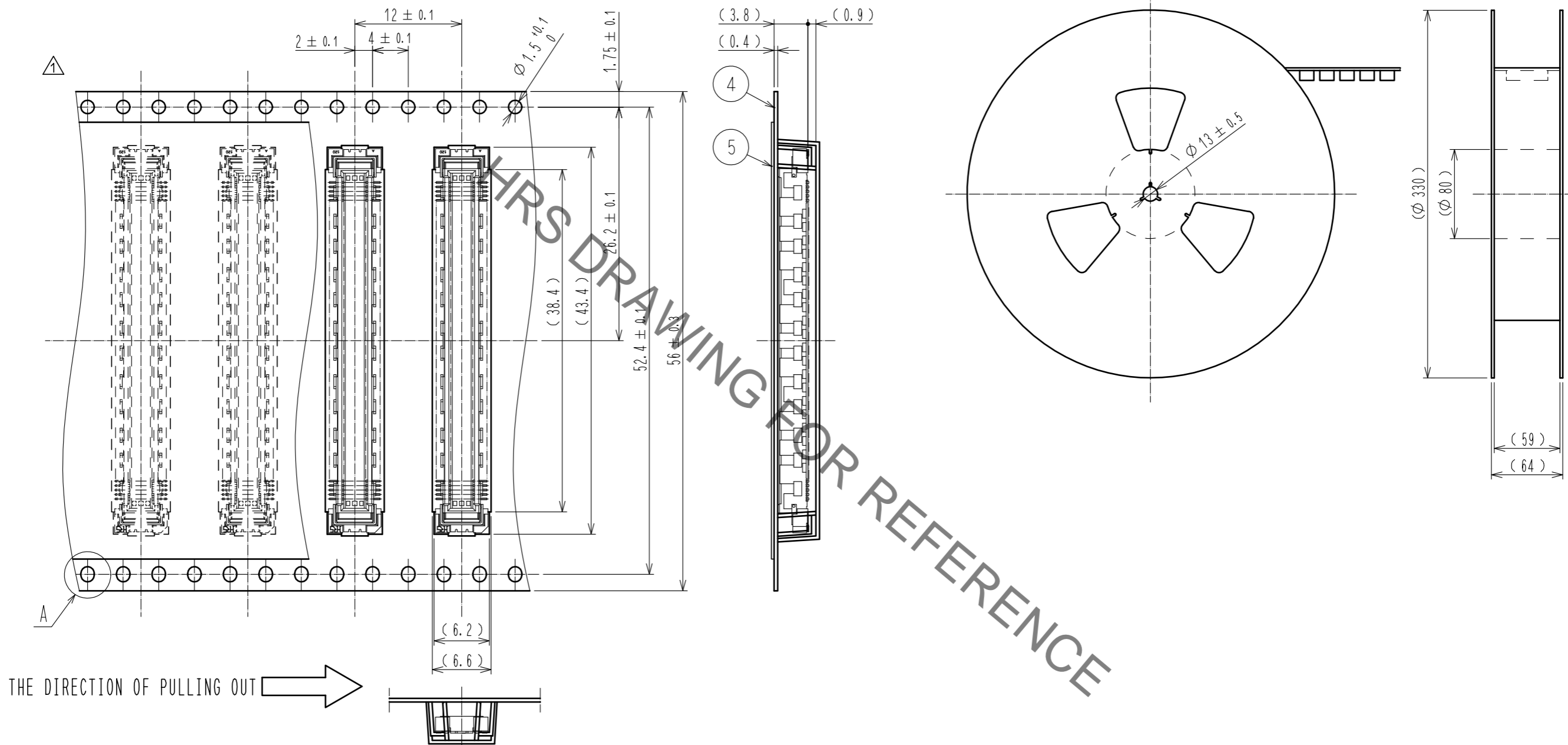
- NOTES
- 1 SMT LEAD-COPLANARITY : 0.1 MAX.
 - 2 THIS PRODUCT HAS NO POLARITY TO PATTERN FOR MOUNTING.
 - 3 MAKE SURE WIDTH OF PATTERN IS WITHIN THAT OF LAND, OR LEAD MAY TOUCH PATTERN. (THIS APPLIES TO HATCHED AREA.)
 - 4 EMBOSS CARRIER TAPE PACKAGE IS APPLIED ON THIS PRODUCT. PLEASE REFER TO THE SHEET 2/2 FOR THE DETAILS.
 - 5 THE DIMENSIONS IN PARENTHESES ARE FOR REFERENCE.

| 3 | PHOSPHOR BRONZE | TIN-PLATING | | | |
|--------------------------------------|-----------------|----------------------------------|----------|--------------------------|-----------------------|
| | | CONTACT AREA : GOLD 0.1μm min. | | | |
| 2 | PHOSPHOR BRONZE | LEAD AREA : TIN-PLATING 1μm min. | | | |
| | | UNDER PLATING : NICKEL 1μm min. | 5 | POLYESTER | TOP COVER TAPE |
| 1 | LCP | BEIGE | 4 | POLYSTYRENE | EMBOSSED CARRIER TAPE |
| NO. | MATERIAL | FINISH . REMARKS | NO. | MATERIAL | FINISH . REMARKS |
| UNITS | | SCALE | COUNT | DESCRIPTION OF REVISIONS | |
| mm | | 4 : 1 | 1 | DIS-F-00015231 | |
| APPROVED : HT. YAMAGUCHI | | | 20100729 | DESIGNED | SY. KUDO |
| CHECKED : HT. YAMAGUCHI | | | 20100729 | CHECKED | HT. YAMAGUCHI |
| DESIGNED : SY. KAMIGA | | | 20100729 | DATE | 20220908 |
| DRAWN : HK. SUNADORI | | | 20100728 | DRAWING NO. | EDC-151958-91-21 |
| HRS HIROSE ELECTRIC CO., LTD. | | | PART NO. | FX10B-144P-SV(91) | |
| | | | CODE NO. | CL0570-0053-9-91 | |
| | | | | | |

Apr.1.2023 Copyright 2023 HIROSE ELECTRIC CO., LTD. All Rights Reserved.
 In case of consideration for using Automotive equipment / device which demand high reliability, kindly contact our sales window correspondents.

DRAWING FOR PACKING(2:1)

REELED DIMENSION (Free)



THE DIRECTION OF PULLING OUT

- NOTES
- 6 1 REEL : 1000 CONNECTORS.
 - 7 MINIMUM 10 COMPARTMENTS FROM BOTH REEL ENDS REMAIN EMPTY.
 - 8 THIS PRODUCT HAS NO POLARITY TO TAPE AND REEL PACKAGING.
 - 9 THE DIMENSIONS IN PARENTHESES ARE FOR REFERENCE.

| | | | |
|------------|-------------|-------------------|-----|
| HRS | DRAWING NO. | EDC-151958-91-21 | 2/2 |
| | PART NO. | FX10B-144P-SV(91) | |
| | CODE NO. | CL0570-0053-9-91 | |