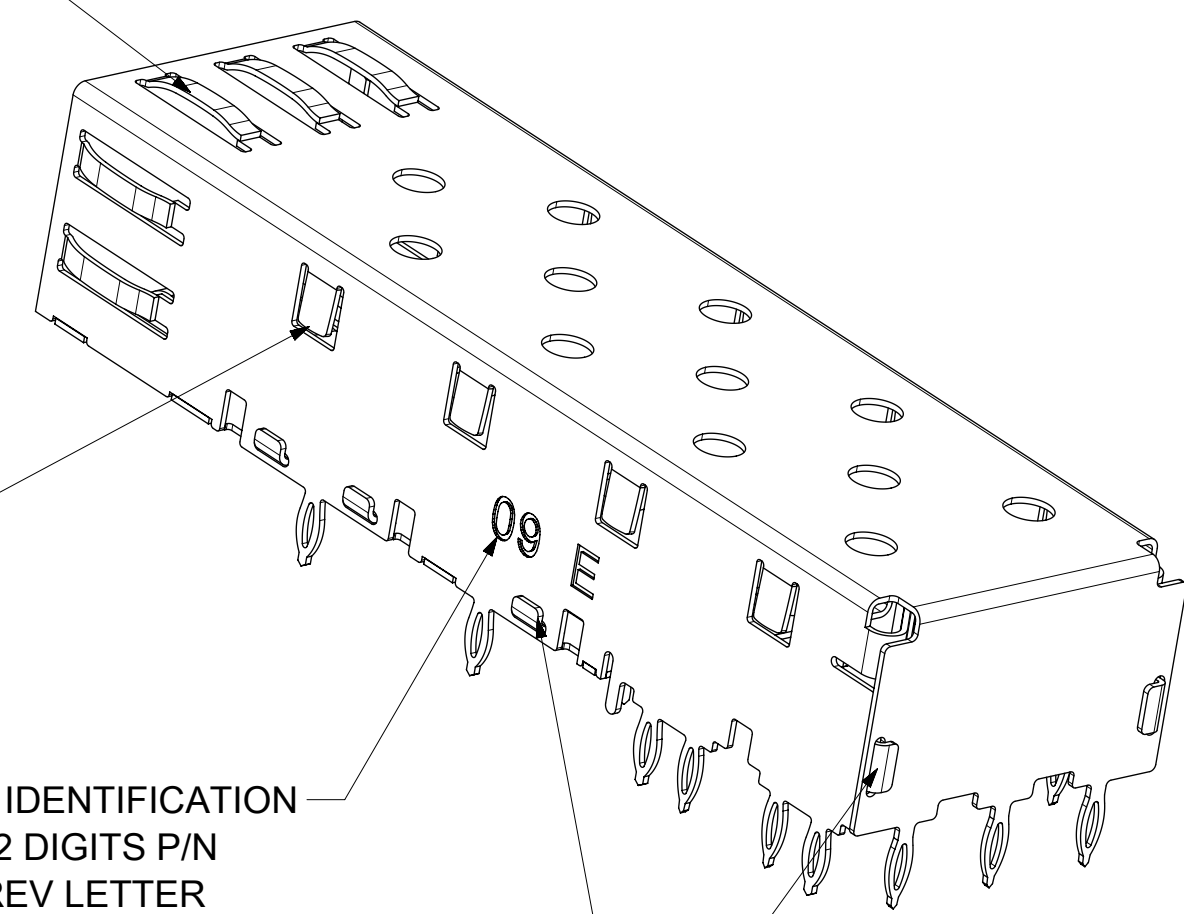


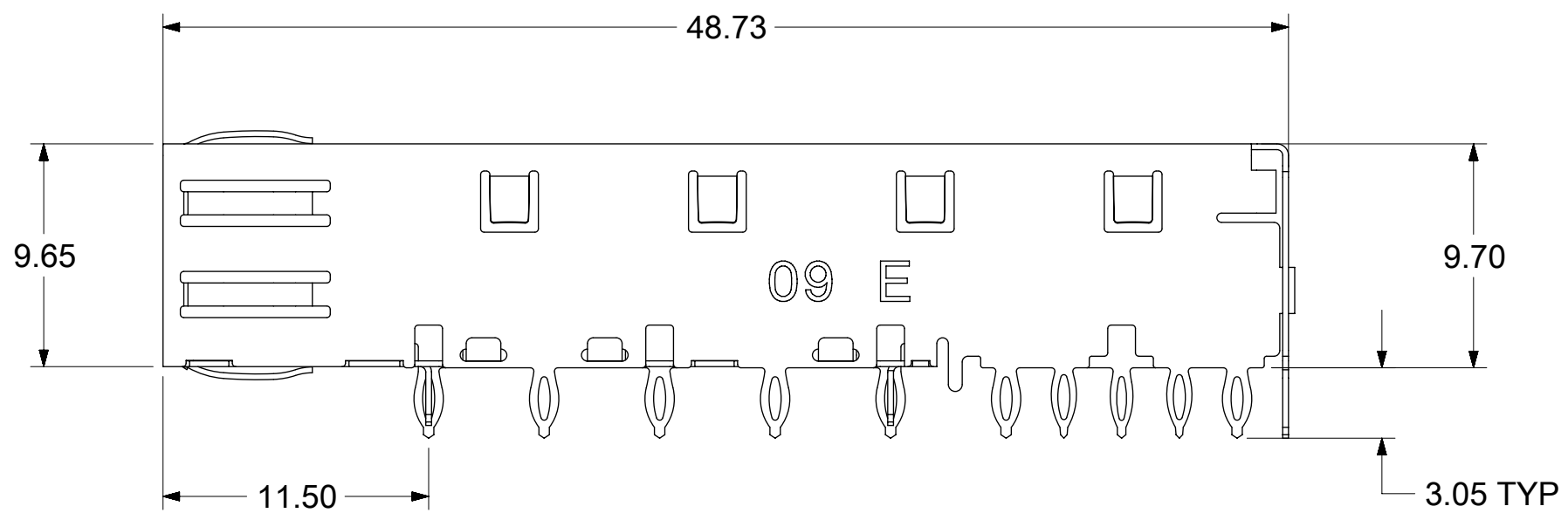
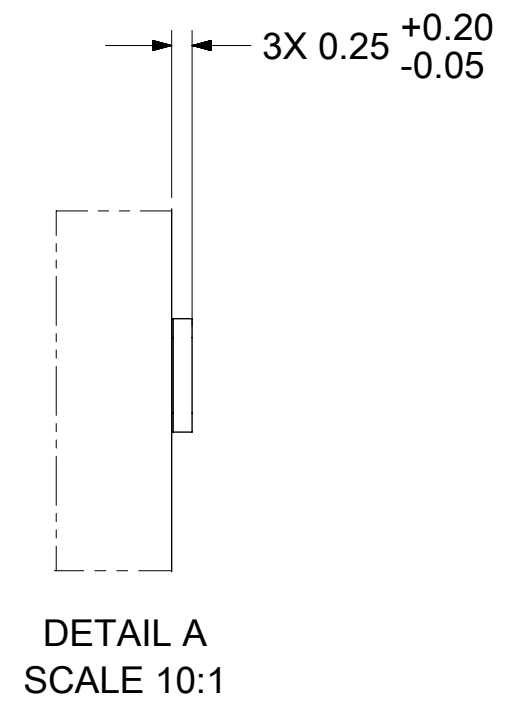
SPRING FINGER GASKET WITH TWO POINTS OF CONTACT. COMPLIES WITH (SFP) MSA BOARD AND BEZEL LOCATIONS.



TABS USED TO MOUNT LIGHT PIPE COVER

CAGE IDENTIFICATION LAST 2 DIGITS P/N AND REV LETTER (ex: 09 X)

ONE PIECE DESIGN SECURELY FASTENED

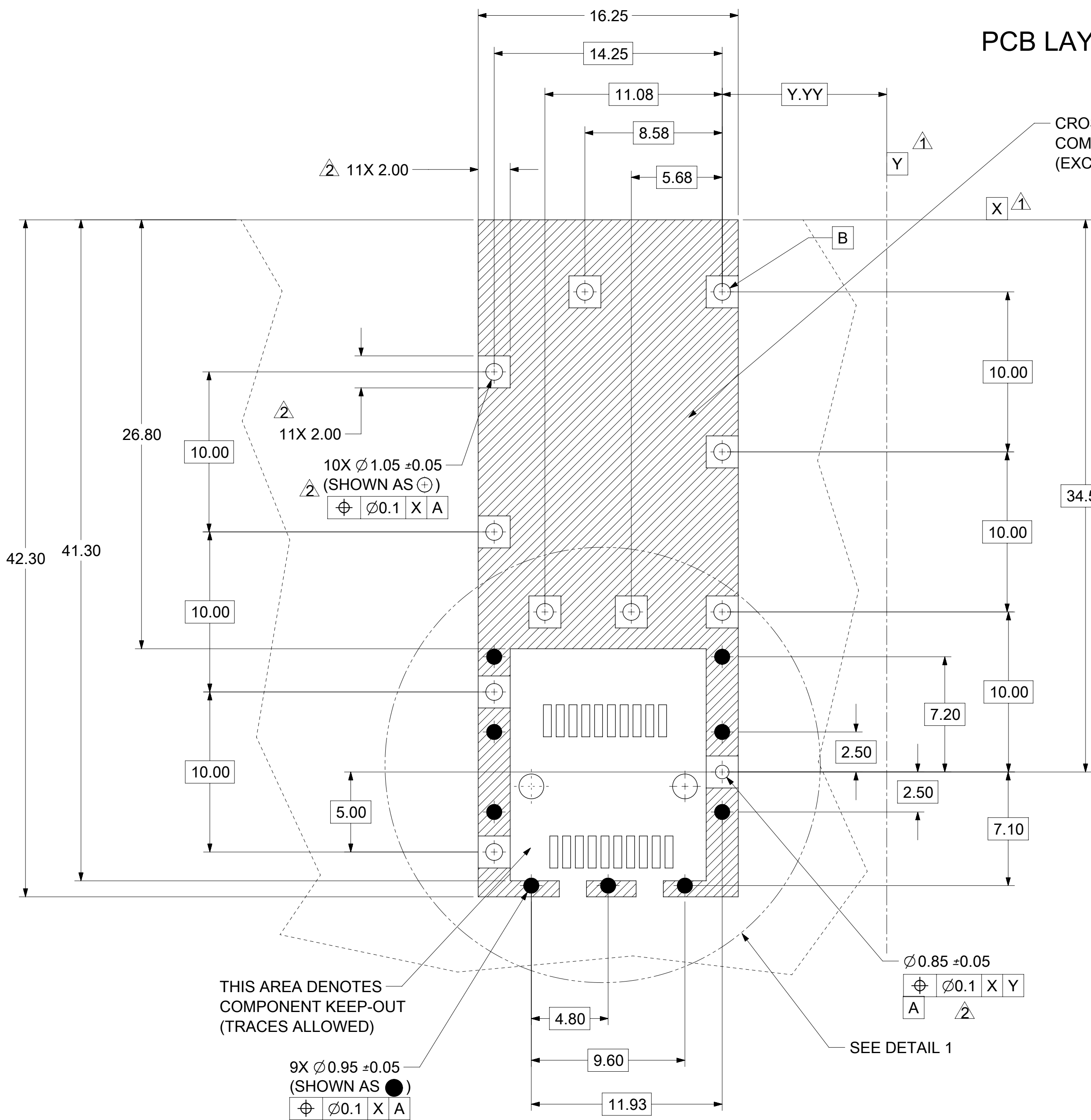


NOTES:

- PRESS FIT LEGS, 0.120 INCHES LONG 1.57 MINIMUM PCB THICKNESS.
- THIS CAGE IS FOR SINGLE SIDED USE ONLY.
- CAN BE USED WITH THE FOLLOWING LIGHT PIPE PART NUMBERS:  
747260001 - LIGHT PIPE FROM BACK TO TOP REFER TO DOCUMENT SD-747260001  
747260002 - LIGHT PIPE FROM SIDE TO TOP REFER TO DOCUMENT SD-747260002
- MATERIAL: COPPER ALLOY  
PLATING: PRE-PLATED WITH NICKEL
- NO RoHS EXEMPTIONS

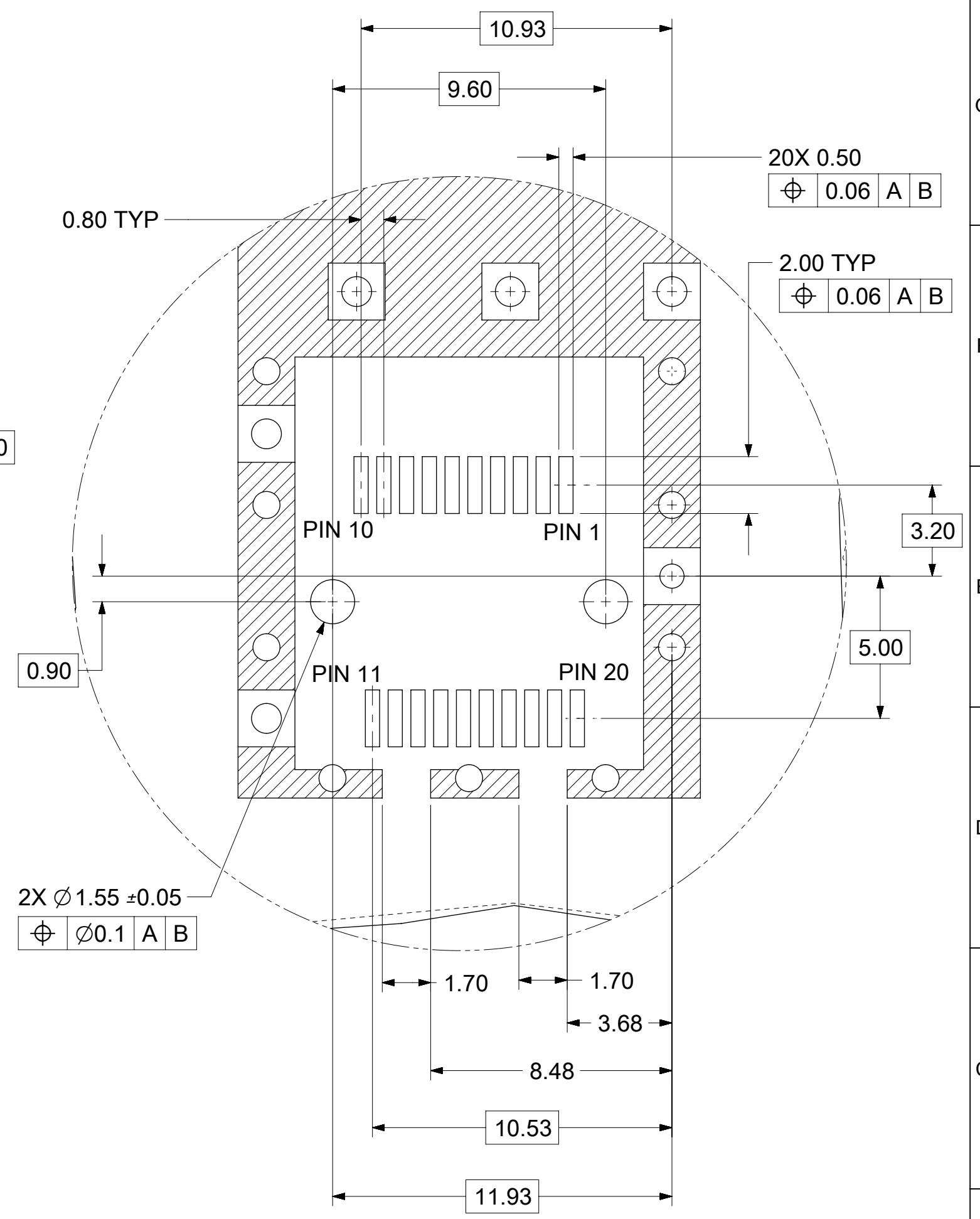
THIS DRAWING CONTAINS INFORMATION THAT IS PROPRIETARY TO MOLEX ELECTRONIC TECHNOLOGIES, LLC AND SHOULD NOT BE USED WITHOUT WRITTEN PERMISSION											
SEE REVISION TABLE	EC NO: 116814	2017/04/06	GENERAL TOLERANCES (UNLESS SPECIFIED)		DIMENSION UNITS	SCALE					
	DRWN: PGSHETTY	2017/05/11	ANGULAR TOL ± 1.0 °		MM	3.5:1					
	CHKD: DSUN15	2017/05/15	4 PLACES ±	DRWN BY	PGSHETTY 2017/04/06		SFP ONE PIECE CAGE PRESS-FIT (0.120 LEGS)				
	REV / APPR: RCHEN08		3 PLACES ±	CHKD BY	DSUN15 2017/05/11						
			2 PLACES ± 0.13	APPR BY	RCHEN08 2017/05/15		PRODUCT CUSTOMER DRAWING				
		1 PLACE ± 0.25	DRAFT WHERE APPLICABLE MUST REMAIN WITHIN DIMENSIONS		DRAWING SIZE	THIRD ANGLE PROJECTION	SERIES	MATERIAL NUMBER	CUSTOMER		
D		0 PLACES ±	C		C		74737	747370009			
							DOCUMENT NUMBER	DOC TYPE	DOC PART	SHEET NUMBER	
							747370009	PSD	ASY	1 OF 4	

# PCB LAYOUT FOR SINGLE SIDE MOUNT



CROSS-HATCHED AREA DENOTES COMPONENT AND TRACE KEEP-OUT (EXCEPT CHASSIS GROUND)

THIS AREA DENOTES COMPONENT KEEP-OUT (TRACES ALLOWED)

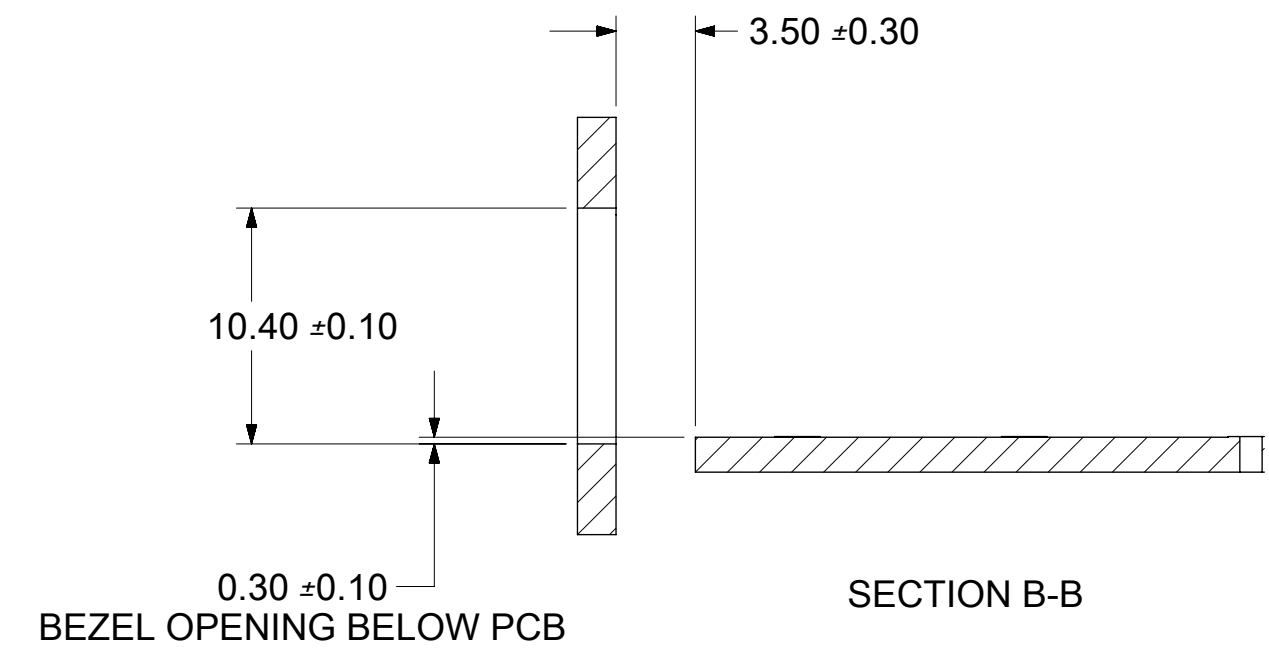
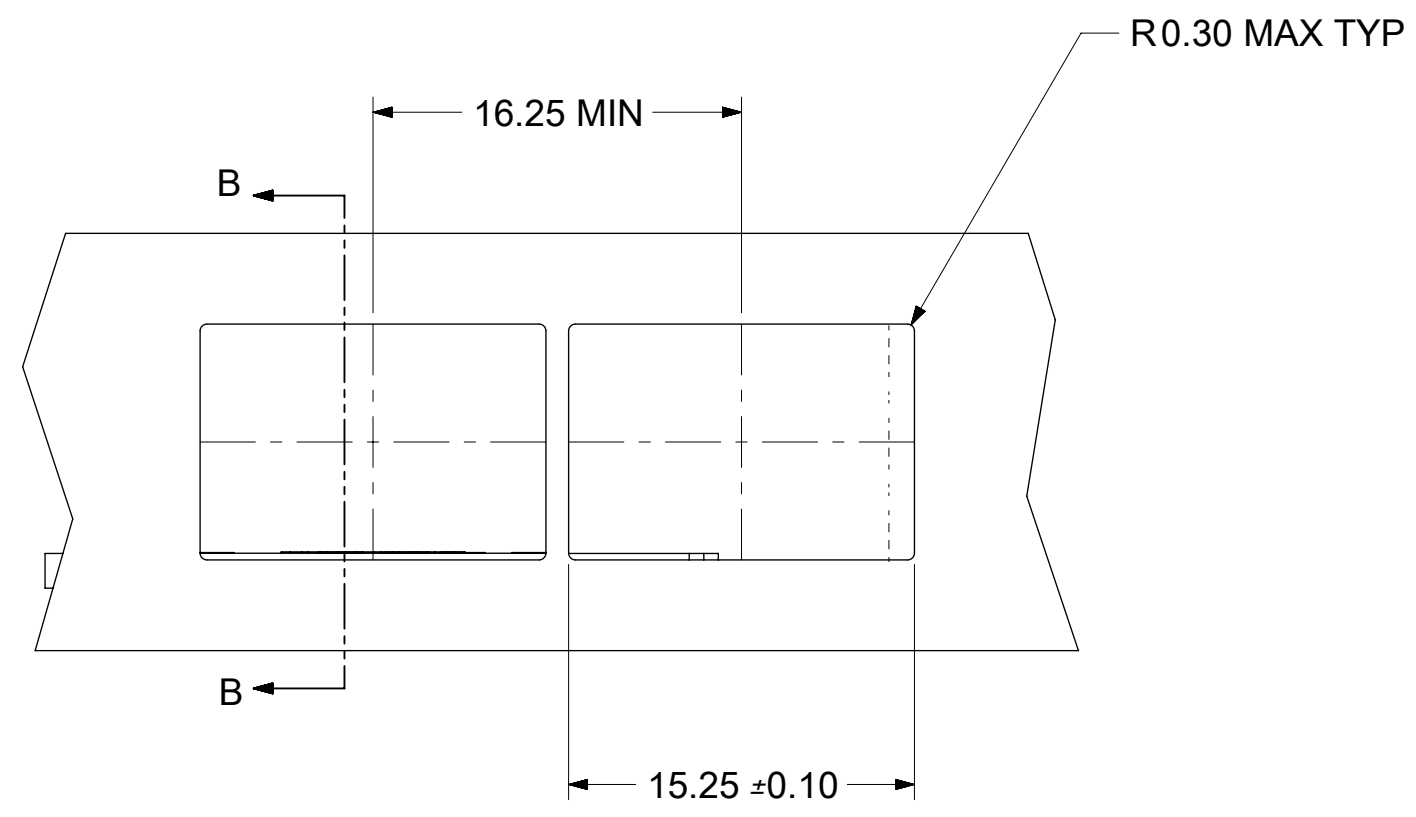
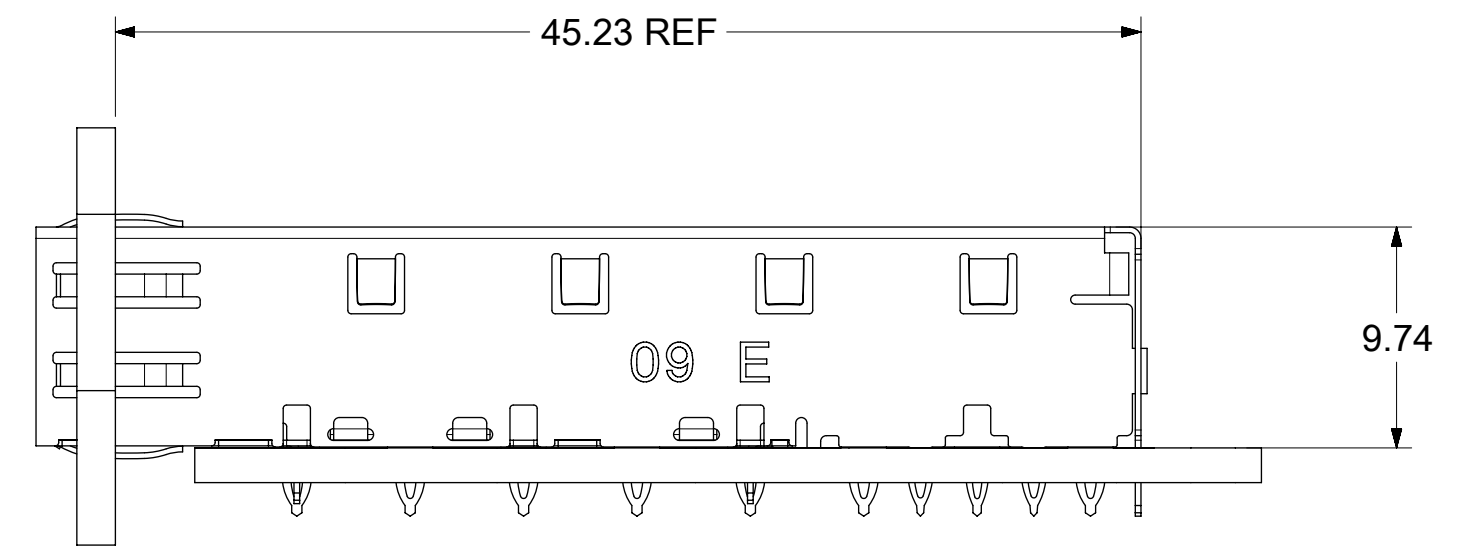


DETAIL 1  
SCALE 6:1

HOST CONNECTOR DETAIL

- DATUM AND BASIC DIMENSIONS ESTABLISHED BY CUSTOMER.
- PADS AND VIAS ARE CHASSIS GROUND.
- HOLE LAYOUT SHOWN IS FOR SINGLE SIDED MOUNTING ONLY.
- CONNECTOR PAD LAYOUT PER SFP MSA, WILL ACCOMODATE MOLEX CONNECTOR SERIES 74441 OR EQUIVALENT.

THIS DRAWING CONTAINS INFORMATION THAT IS PROPRIETARY TO MOLEX ELECTRONIC TECHNOLOGIES, LLC AND SHOULD NOT BE USED WITHOUT WRITTEN PERMISSION												
SEE REVISION TABLE EC NO: 116814 DRWN: PGSHETTY CHKD: DSUN15 REV / APPR: RCHEN08	GENERAL TOLERANCES (UNLESS SPECIFIED)						DIMENSION UNITS	SCALE				
	ANGULAR TOL ± 1.0 °						MM	5:1				
	4 PLACES ±						DRWN BY	DATE	SFP ONE PIECE CAGE PRESS-FIT (0.120 LEGS)			
	3 PLACES ±						PGSHETTY	2017/04/06				
	2 PLACES ± 0.13						CHKD BY	DATE	PRODUCT CUSTOMER DRAWING			
1 PLACE ± 0.25						DSUN15	2017/05/11					
0 PLACES ±						APPR BY	DATE	SERIES	MATERIAL NUMBER	CUSTOMER		
DRAFT WHERE APPLICABLE MUST REMAIN WITHIN DIMENSIONS						RCHEN08	2017/05/15	74737	747370009			
						DRAWING SIZE	THIRD ANGLE PROJECTION	DOCUMENT NUMBER		DOC TYPE	DOC PART	SHEET NUMBER
						C		747370009		PSD	ASY	2 OF 4



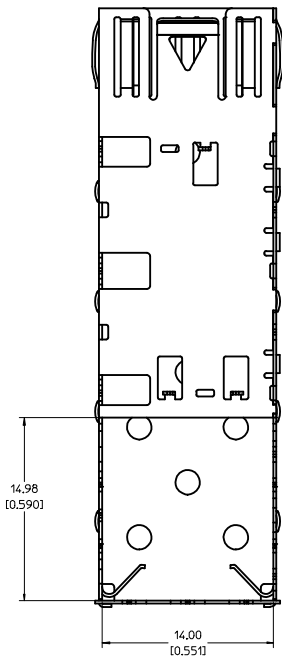
THIS DRAWING CONTAINS INFORMATION THAT IS PROPRIETARY TO MOLEX ELECTRONIC TECHNOLOGIES, LLC AND SHOULD NOT BE USED WITHOUT WRITTEN PERMISSION

SEE REVISION TABLE EC NO: 116814 DRWN: PGSHETTY CHKD: DSUN15 REV / APPR: RCHEN08	GENERAL TOLERANCES (UNLESS SPECIFIED)		DIMENSION UNITS	SCALE	<b>molex</b>  SFP ONE PIECE CAGE PRESS-FIT (0.120 LEGS)		
	ANGULAR TOL ± 1.0 °		MM	3:1			
	4 PLACES ±	DRWN BY	DATE				
	3 PLACES ±	PGSHETTY	2017/04/06				
2 PLACES ± 0.13	CHKD BY	DATE		PRODUCT CUSTOMER DRAWING			
1 PLACE ± 0.25	DSUN15	2017/05/11					
0 PLACES ±	APPR BY	DATE		SERIES	MATERIAL NUMBER	CUSTOMER	
DRAFT WHERE APPLICABLE MUST REMAIN WITHIN DIMENSIONS	RCHEN08	2017/05/15		74737	747370009		
DRAWING SIZE	THIRD ANGLE PROJECTION		DOCUMENT NUMBER		DOC TYPE	DOC PART	SHEET NUMBER
C			747370009		PSD	ASY	3 OF 4

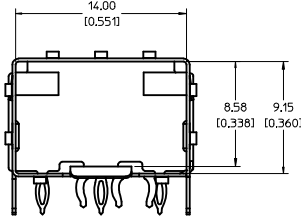
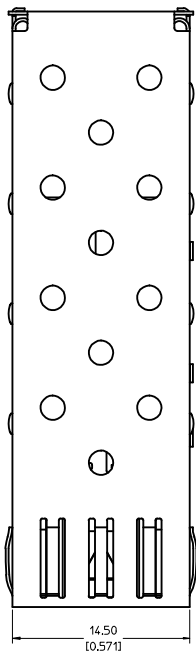
REV	DATE	DESCRIPTION
A	2006/11/30	INITIAL RELEASE
B	2007/01/23	[1] CHANGED MODULE EJECT FEATURE TOL FROM +/- 1DEG TO +/-5DEG; [2] CHANGED EJECT ARM ANGLE TOL FROM +/-1DEG TO 50DEG MIN; [3] CHANGED EMI SPRING FINGER OVERLAP FROM 0.21MM TO 0.01MM MIN; [4] ADDED DIM TO LEGS: OVERALL LENGTH, LENGTH FROM TIP TO SLOT, AND SLOT LENGTH.; [5] DELETED COMMENTS SECTION FROM REV CHART.; [6] ADDED "REF" TO DIM K2 ON SHEET 2.
C	2007/04/25	[1] ADDED REV SHEET; [2] UPDATED REV NOTES A-B; [3] UPDATD DRAWING TO REFLECT CHG'S MADE TO EM-74737-009-ASSY REV C; [4] ON SHT1 ROTATED BTM VIEW 180 DEGREES.
D	2017/04/05	REMASTERED FROM SD-74737-009 REV_C TO 747370009 PSD ASY REV_D IN NX SHEET 2 : F1 : ADDED TYP TO THE DIM 2.00 SHEET 3 : E7 : ADDED DIM R0.3 MAX TYP

THIS DRAWING CONTAINS INFORMATION THAT IS PROPRIETARY TO MOLEX ELECTRONIC TECHNOLOGIES, LLC AND SHOULD NOT BE USED WITHOUT WRITTEN PERMISSION

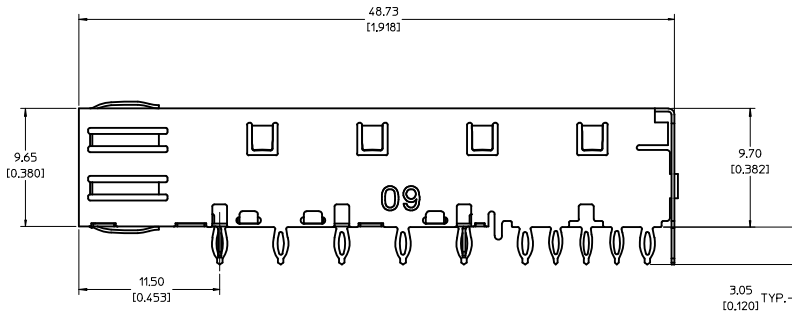
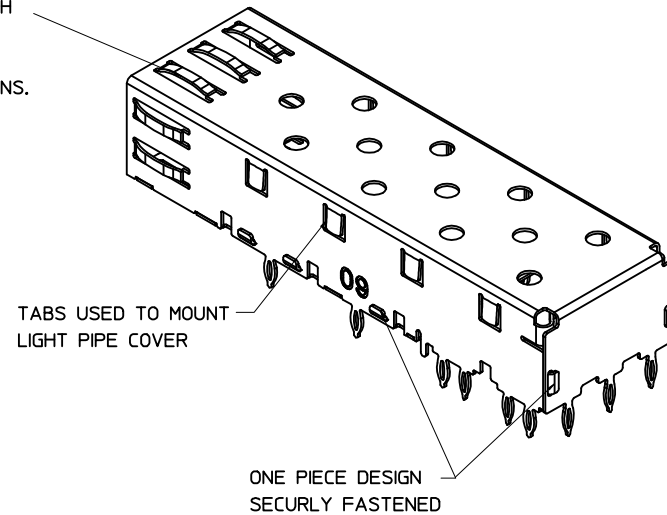
SEE REVISION TABLE	EC NO: 116814	2017/04/06	GENERAL TOLERANCES (UNLESS SPECIFIED)	DIMENSION UNITS	SCALE	<b>molex</b>  SFP ONE PIECE CAGE PRESS-FIT (0.120 LEGS)	
	DRWN: PGSHETTY	2017/05/11		MM	1:1		
	CHKD: DSUN15	2017/05/15		ANGULAR TOL ± 1.0 °	DRWN BY		DATE
	REV / APPR: RCHEN08			4 PLACES ±	PGSHETTY		2017/04/06
				3 PLACES ±	CHKD BY		DATE
				2 PLACES ± 0.13	DSUN15		2017/05/11
				1 PLACE ± 0.25	APPR BY		DATE
				0 PLACES ±	RCHEN08		2017/05/15
				DRAFT WHERE APPLICABLE MUST REMAIN WITHIN DIMENSIONS	DRAWING SIZE		THIRD ANGLE PROJECTION
					C		
RELEASE STATUS		P1	RELEASE DATE	15.05.2017	06:09:50	PRODUCT CUSTOMER DRAWING	
SERIES		MATERIAL NUMBER		CUSTOMER		DOCUMENT NUMBER	
74737		747370009				747370009	
DOC TYPE		DOC PART		SHEET NUMBER		4 OF 4	
PSD		ASY		4 OF 4			



BOTTOM VIEW



SPRING FINGER GASKET WITH TWO POINTS OF CONTACT. COMPLIES WITH (SFP) MSA BOARD AND BEZEL LOCATIONS.



NOTES:

- PRESS FIT LEGS, 0.120 INCHES LONG. 1.57 (0.062) MINIMUM PCB THICKNESS.
- THIS CAGE IS FOR SINGLE SIDED USE ONLY.
- CAN BE USED WITH THE FOLLOWING LIGHT PIPE PART NUMBERS:

747260001 - LIGHT PIPE FROM BACK TO TOP  
(REFER TO DOCUMENT SD-74726-001)

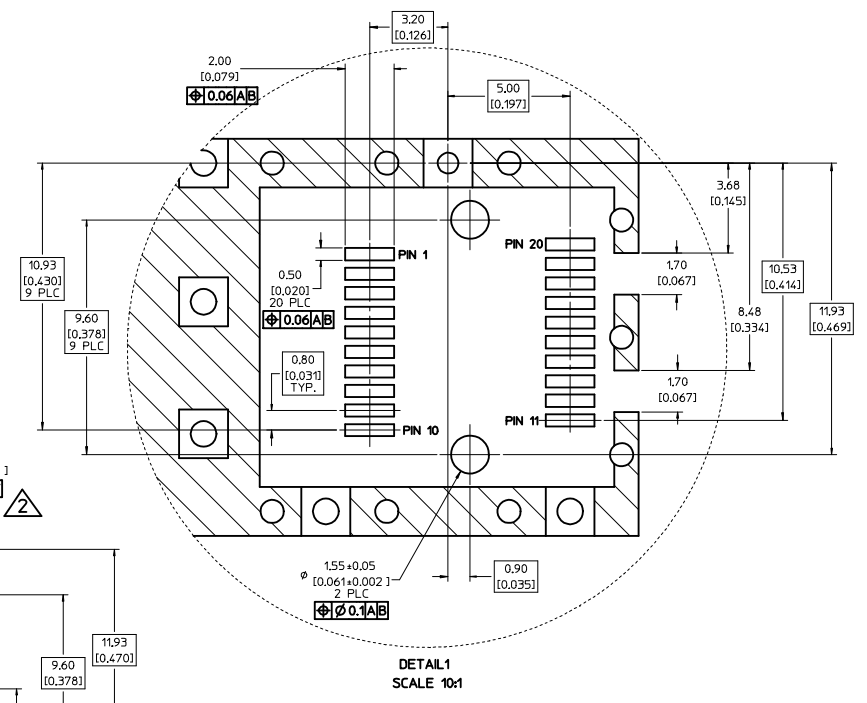
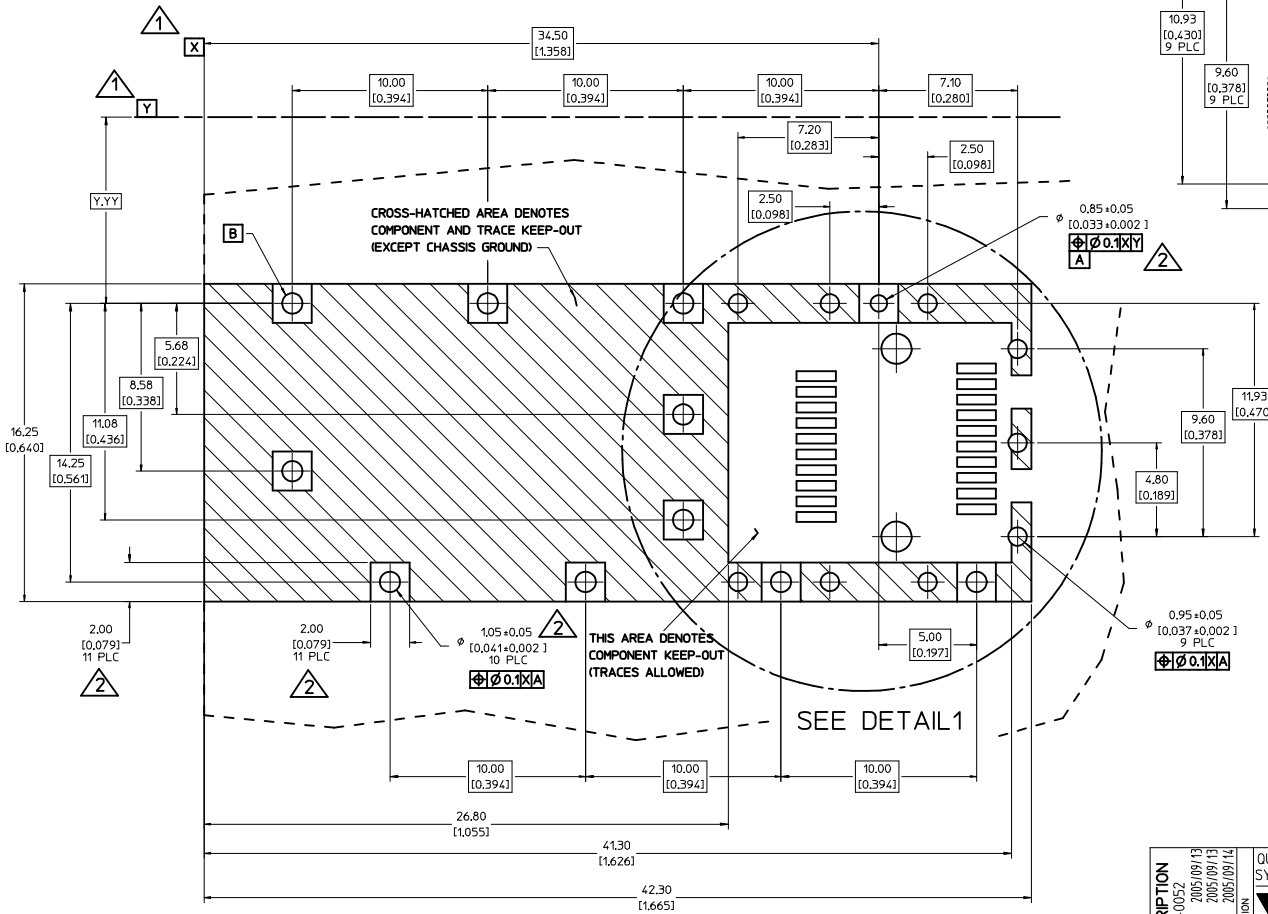
747260002 - LIGHT PIPE FROM SIDE TO TOP  
(REFER TO DOCUMENT SD-74726-002)

- MATERIAL: COPPER ALLOY  
PLATING: PRE-PLATED WITH NICKEL

- THIS PART MEETS THE RESTRICTION OF HAZARDOUS SUBSTANCES IN ELECTRICAL AND ELECTRONIC EQUIPMENT (ROHS) DIRECTIVE (2002/95/EC).

ENTER DESCRIPTION EEC NO: USY2006-0052 DRAWN BY: KSI MONSON 2005/09/13 CHECKED BY: CHYD BRUSSELL 2005/09/13 APPROVED BY: BRUSSELL 2005/09/14	QUALITY SYMBOLS ▽=0 ▽=0	GENERAL TOLERANCES (UNLESS SPECIFIED)		DIMENSION STYLE MM/IN		SCALE 5:1	DESIGN UNITS METRIC	THIRD ANGLE PROJECTION		
		4 PLACES ±--- ±---	3 PLACES ±--- ±.005	2 PLACES ±0.13 ±.01	1 PLACE ±0.25 ±---	ANGULAR ± 1°	DRAFT WHERE APPLICABLE MUST REMAIN WITHIN DIMENSIONS	DRAWN BY: KSI MONSON 2005/09/12 CHECKED BY: BRUSSELL 2005/09/12 APPROVED BY: BRUSSELL 2005/09/12	DATE:	TITLE SFP ONE PIECE CAGE PRESS-FIT (0.120 LEGS)
		MATERIAL NO. 747370009		DOCUMENT NO. SD-74737-0009		MOLEX INCORPORATED		SHEET NO. 1 OF 3		
		THIS DRAWING CONTAINS INFORMATION THAT IS PROPRIETARY TO MOLEX INCORPORATED AND SHOULD NOT BE USED WITHOUT WRITTEN PERMISSION								

- 1 DATUM AND BASIC DIMENSIONS ESTABLISHED BY CUSTOMER.
- 2 PADS AND VIAS ARE CHASSIS GROUND.
- 3 HOLE LAYOUT SHOWN IS FOR SINGLE SIDED MOUNTING ONLY.
- 4 CONNECTOR PAD LAYOUT PER SFP MSA, WILL ACCOMMODATE MOLEX CONNECTOR SERIES 74441 OR EQUIVALENT.

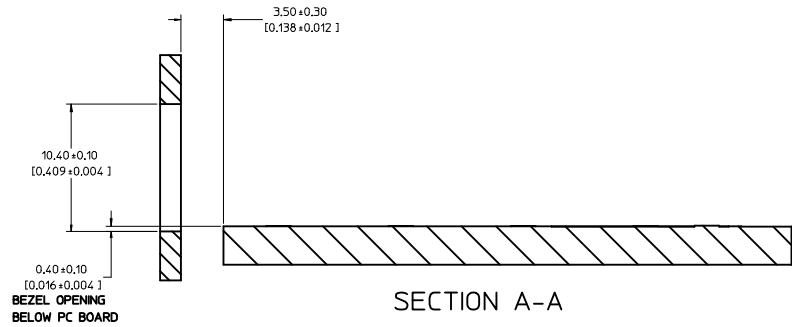
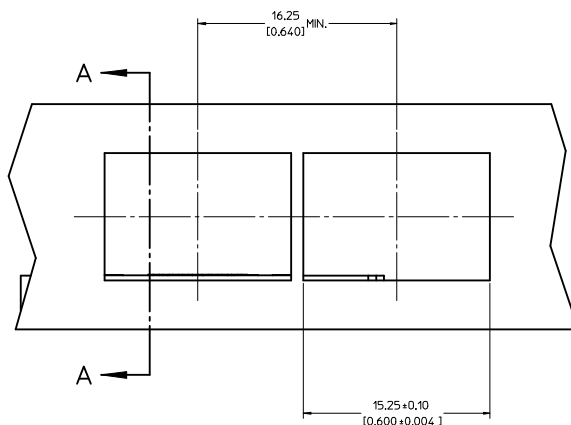
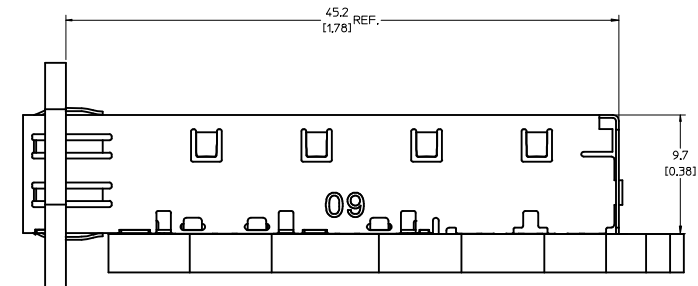
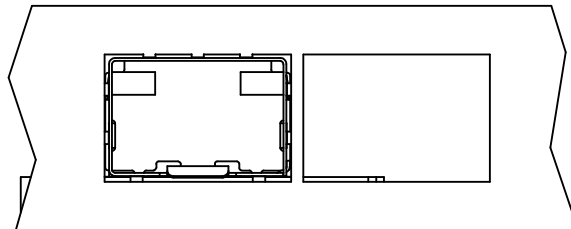


SEE DETAIL1

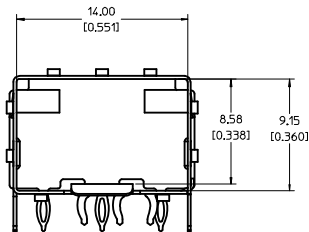
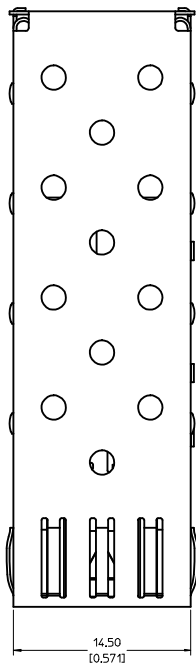
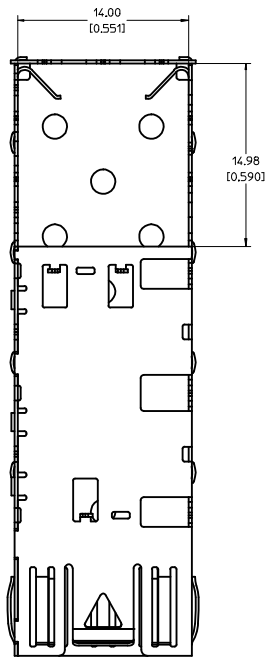
CROSS-HATCHED AREA DENOTES COMPONENT AND TRACE KEEP-OUT (EXCEPT CHASSIS GROUND)

THIS AREA DENOTES COMPONENT KEEP-OUT (TRACES ALLOWED)

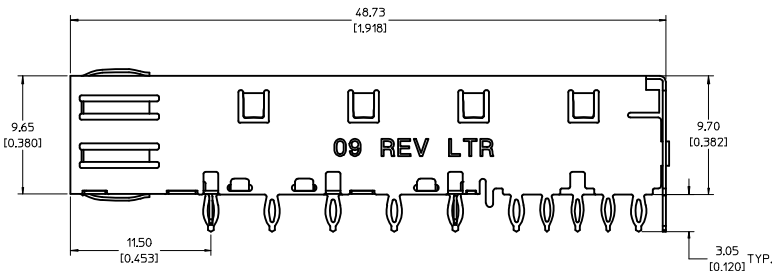
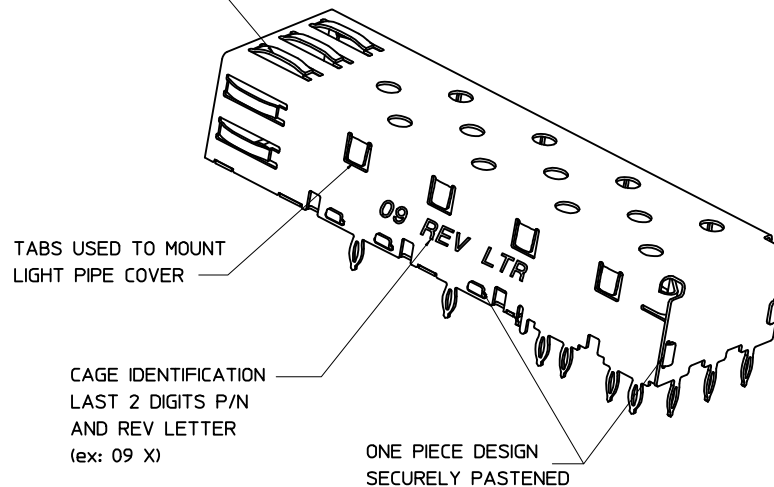
<b>ENTER DESCRIPTION</b> IEC NO.: USY2006-0052 DRAWN BY: KSI MONSO 2005/09/13 CHECKED BY: CHYO BRUSSELL 2005/09/13 APPROVED BY: APPR: BRUSSELL 2005/09/14	QUALITY SYMBOLS	GENERAL TOLERANCES (UNLESS SPECIFIED)	DIMENSION STYLE	SCALE	DESIGN UNITS	THIRD ANGLE PROJECTION
	$\nabla=0$ $\nabla=0$	mm INCH 4 PLACES ±.005 3 PLACES ±.005 2 PLACES ±.01 1 PLACE ±.025 ANGULAR ± 1°	MM/IN	8:1	METRIC	
	DRAFT WHERE APPLICABLE MUST REMAIN WITHIN DIMENSIONS	DRAWN BY: KSI MONSO 2005/09/12 CHECKED BY: BRUSSELL 2005/09/12 APPROVED BY: BRUSSELL 2005/09/12 MATERIAL NO.: 747370009 DOCUMENT NO.: SD-74737-0009	TITLE	SHEET NO.	<b>SFP ONE PIECE CAGE PRESS-FIT (0.120 LEGS)</b>  <b>MOLEX INCORPORATED</b>	



<b>ENTER DESCRIPTION</b> IEC NO: USY2006-0052 DRAWN BY: KSI MONSON 2005/09/13 CHECKED BY: CHYD BRUSSELL 2005/09/13 APPROVED BY: APPR: BRUSSELL 2005/09/14 REV: A	<b>QUALITY SYMBOLS</b> ▽=0 ▽=0	<b>GENERAL TOLERANCES (UNLESS SPECIFIED)</b>		<b>DIMENSION STYLE</b> MM/IN	<b>SCALE</b> 5:1	<b>DESIGN UNITS</b> METRIC	THIRD ANGLE PROJECTION			
		4 PLACES ± --- ± ---	3 PLACES ± --- ± .005	2 PLACES ± 0.13 ± .01	1 PLACE ± 0.25 ± ---	ANGULAR ± 1°	DRAFT WHERE APPLICABLE MUST REMAIN WITHIN DIMENSIONS	DRAWN BY: KSI MONSON 2005/09/12 CHECKED BY: BRUSSELL 2005/09/12 APPROVED BY: BRUSSELL 2005/09/12	DATE: 2005/09/12 DATE: 2005/09/12 DATE: 2005/09/12	<b>TITLE</b> SFP ONE PIECE CAGE PRESS-FIT (0,120 LEGS)
		MATERIAL NO: 747370009		DOCUMENT NO: SD-74737-0009		<b>MOLEX INCORPORATED</b>		SHEET NO: 3 OF 3		
		THIS DRAWING CONTAINS INFORMATION THAT IS PROPRIETARY TO MOLEX INCORPORATED AND SHOULD NOT BE USED WITHOUT WRITTEN PERMISSION								



SPRING FINGER GASKET WITH TWO POINTS OF CONTACT. COMPLIES WITH (SFP) MSA BOARD AND BEZEL LOCATIONS.



NOTES:

- PRESS FIT LEGS, 0.120 INCHES LONG. 1.57 [0.062] MINIMUM PCB THICKNESS.
- THIS CAGE IS FOR SINGLE SIDED USE ONLY.
- CAN BE USED WITH THE FOLLOWING LIGHT PIPE PART NUMBERS:

747260001 - LIGHT PIPE FROM BACK TO TOP  
(REFER TO DOCUMENT SD-74726-001)

747260002 - LIGHT PIPE FROM SIDE TO TOP  
(REFER TO DOCUMENT SD-74726-002)

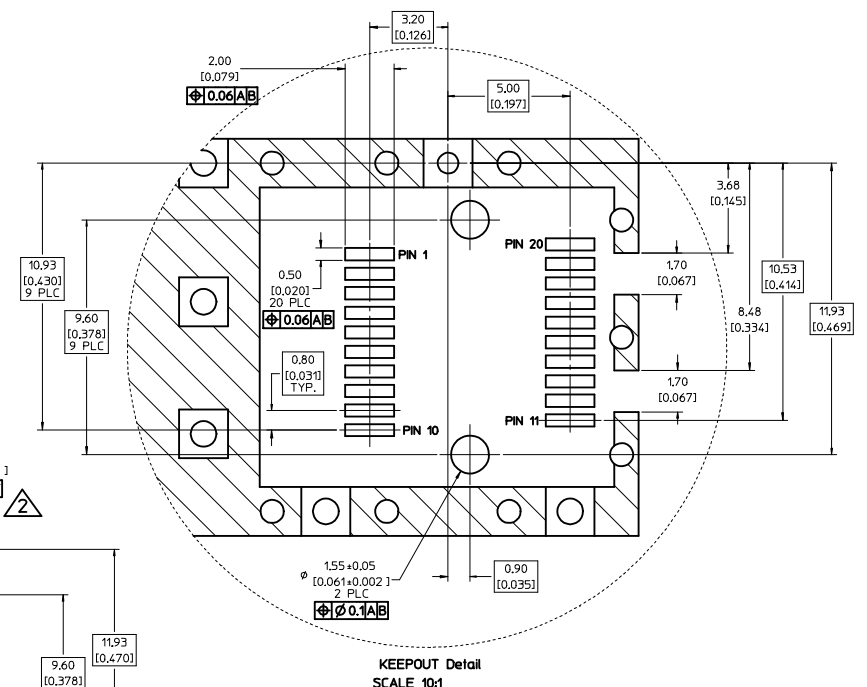
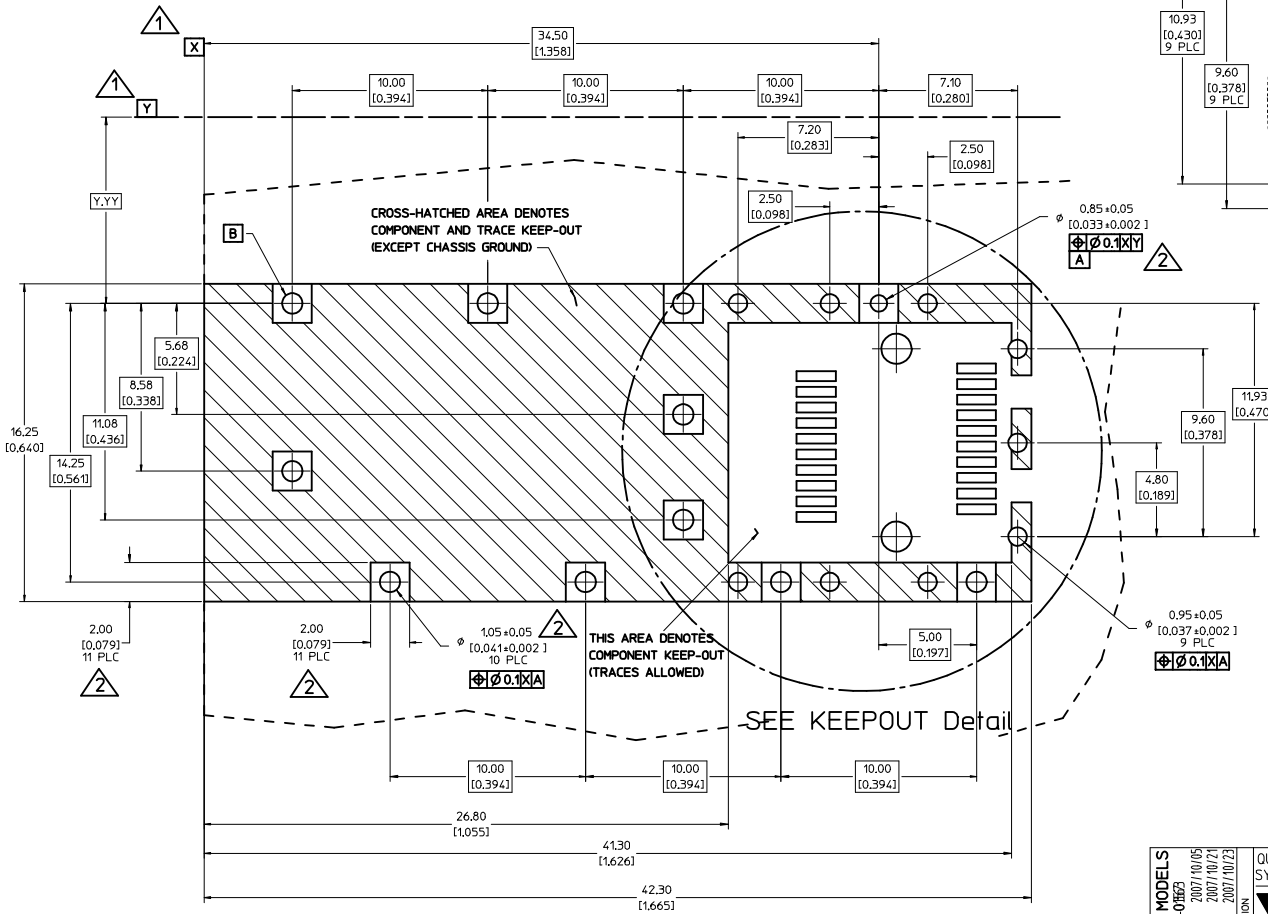
4. MATERIAL: COPPER ALLOY  
PLATING: PRE-PLATED WITH NICKEL

5. THIS PART MEETS THE RESTRICTION OF HAZARDOUS SUBSTANCES IN ELECTRICAL AND ELECTRONIC EQUIPMENT (ROHS) DIRECTIVE (2002/95/EC).

UPDATED 3D MODELS EC NO: USY2008-018623 DRAWN BY: CCOX 2007/10/05 CHKD: 2007/10/21 APPR: RMAHMOOD 2007/10/23	QUALITY SYMBOLS	GENERAL TOLERANCES (UNLESS SPECIFIED)	DIMENSION STYLE	SCALE	DESIGN UNITS	THIRD ANGLE PROJECTION															
	$\nabla=0$ $\nabla=0$	<table border="1"> <tr> <th></th> <th>mm</th> <th>INCH</th> </tr> <tr> <td>4 PLACES</td> <td>±---</td> <td>±---</td> </tr> <tr> <td>3 PLACES</td> <td>±---</td> <td>±.005</td> </tr> <tr> <td>2 PLACES</td> <td>±0.13</td> <td>±.01</td> </tr> <tr> <td>1 PLACE</td> <td>±0.25</td> <td>±---</td> </tr> </table>		mm	INCH	4 PLACES	±---	±---	3 PLACES	±---	±.005	2 PLACES	±0.13	±.01	1 PLACE	±0.25	±---	MM/IN	5:1	METRIC	
		mm	INCH																		
	4 PLACES	±---	±---																		
3 PLACES	±---	±.005																			
2 PLACES	±0.13	±.01																			
1 PLACE	±0.25	±---																			
DRAFT WHERE APPLICABLE MUST REMAIN WITHIN DIMENSIONS	<table border="1"> <tr> <td>DRAWN BY</td> <td>DATE</td> <td>TITLE</td> </tr> <tr> <td>CCOX</td> <td>2006/11/22</td> <td>SFP ONE PIECE CAGE PRESS-FIT (0.120 LEGS)</td> </tr> <tr> <td>CHECKED BY</td> <td>DATE</td> <td></td> </tr> <tr> <td>RMAHMOOD</td> <td>2006/11/22</td> <td></td> </tr> <tr> <td>APPROVED BY</td> <td>DATE</td> <td></td> </tr> </table>	DRAWN BY	DATE	TITLE	CCOX	2006/11/22	SFP ONE PIECE CAGE PRESS-FIT (0.120 LEGS)	CHECKED BY	DATE		RMAHMOOD	2006/11/22		APPROVED BY	DATE		MATERIAL NO.	DOCUMENT NO.	MOLEX INCORPORATED		
DRAWN BY	DATE	TITLE																			
CCOX	2006/11/22	SFP ONE PIECE CAGE PRESS-FIT (0.120 LEGS)																			
CHECKED BY	DATE																				
RMAHMOOD	2006/11/22																				
APPROVED BY	DATE																				
			747370009	SD-74737-009	SHEET NO. 1 OF 4																

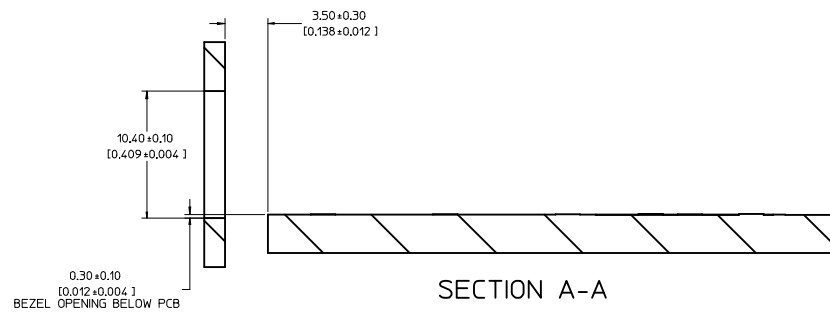
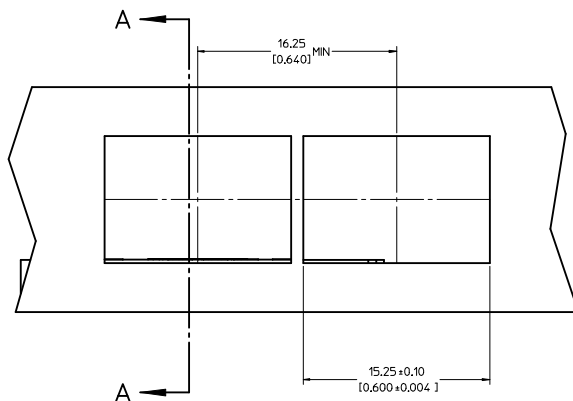
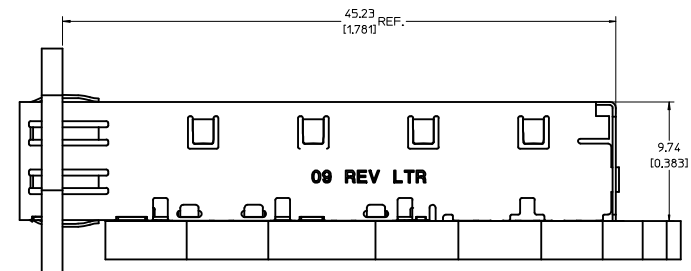


- DATUM AND BASIC DIMENSIONS ESTABLISHED BY CUSTOMER.
- PADS AND VIAS ARE CHASSIS GROUND.
- HOLE LAYOUT SHOWN IS FOR SINGLE SIDED MOUNTING ONLY.
- CONNECTOR PAD LAYOUT PER SFP MSA, WILL ACCOMMODATE MOLEX CONNECTOR SERIES 74441 OR EQUIVALENT.



<b>UPDATED 3D MODELS</b> EC NO: USY2008-01853 DRAWN: CCOX 2007/10/05 CHYK: 2007/10/21 APPROV: RMAHMOOD 2007/10/23	QUALITY SYMBOLS	GENERAL TOLERANCES (UNLESS SPECIFIED)	DIMENSION STYLE	SCALE	DESIGN UNITS	THIRD ANGLE PROJECTION
	$\nabla=0$ $\nabla=0$	mm    INCH 4 PLACES ± --- ± --- 3 PLACES ± --- ± .005 2 PLACES ± 0.13 ± .01 1 PLACE ± 0.25 ± --- ANGULAR ± 1°	MM/IN	8:1	METRIC	
	DRAFT WHERE APPLICABLE MUST REMAIN WITHIN DIMENSIONS	DRAWN BY: CCOX CHECKED BY: RMAHMOOD APPROVED BY: RMAHMOOD	DATE: 2006/11/22 DATE: 2006/11/22 DATE:	TITLE: SFP ONE PIECE CAGE PRESS-FIT (0.120 LEGS)		
	MATERIAL NO. 747370009 SIZE D	DOCUMENT NO. SD-74737-009		MOLEX INCORPORATED SHEET NO. 2 OF 4		

20 19 18 17 16 15 14 13 12 11 10 9 8 7 6 5 4 3 2 1

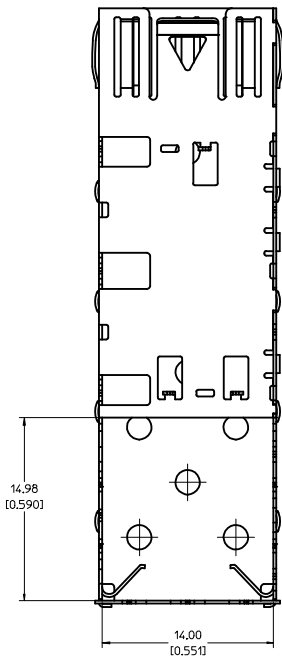


<b>UPDATED 3D MODELS</b> EC NO: USY2008-01883 DRAWN BY: CCOX 2007/10/05 CHYK: 2007/10/21 APPR: RMAHMOOD 2007/10/23	QUALITY SYMBOLS ▽=0 ▽=0	GENERAL TOLERANCES (UNLESS SPECIFIED)		DIMENSION STYLE <b>MM/IN</b>	SCALE <b>5:1</b>	DESIGN UNITS <b>METRIC</b>	THIRD ANGLE PROJECTION
		4 PLACES ± --- ± --- 3 PLACES ± --- ± .005 2 PLACES ± 0.13 ± .01 1 PLACE ± 0.25 ± --- ANGULAR ± 1°	mm INCH	DRAWN BY: CCOX DATE: 2006/11/22 CHECKED BY: RMAHMOOD DATE: 2006/11/22 APPROVED BY: DATE:	TITLE <b>SFP ONE PIECE CAGE PRESS-FIT (0.120 LEGS)</b>		
		DRAFT WHERE APPLICABLE MUST REMAIN WITHIN DIMENSIONS	MATERIAL NO. <b>747370009</b>		DOCUMENT NO. <b>SD-74737-009</b>		SHEET NO. <b>3 OF 4</b>
			THIS DRAWING CONTAINS INFORMATION THAT IS PROPRIETARY TO MOLEX INCORPORATED AND SHOULD NOT BE USED WITHOUT WRITTEN PERMISSION				

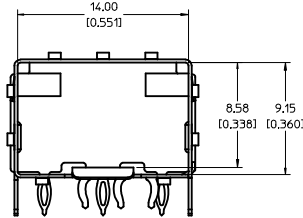
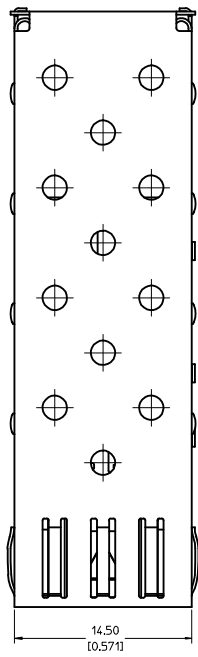
19 18 17 16 15 14 13 12 11 10 9 8 7 6 5 4 3 2 1

DATE	REV	CHANGES
2006/11/30	A	INITIAL RELEASE
2007/01/23	B	[1] CHANGED MODULE EJECT FEATURE TOL FROM +/- 1DEG TO +/-5DEG, [2] CHANGED EJECT ARM ANGLE TOL FROM +/-1DEG TO 50DEG MIN, [3] CHANGED EMI SPRING FINGER OVERLAP FROM 0.21MM TO 0.01MM MIN, [4] ADDED DIM TO LEGS: OVERALL LENGTH, LENGTH FROM TIP TO SLOT, AND SLOT LENGTH., [5] DELETED COMMENTS SECTION FROM REV CHART., [6] ADDED 'REF' TO DIM K2 ON SHEET 2.
2007/04/25	C	[1] ADDED REV SHEET, [2] UPDATED REV NOTES A-B, [3] UPDATD DRAWING TO REFLECT CHG'S MADE TO EM-74737-009-ASSY REV C, [4] ON SHT1 ROTATED BTM_VIEW 180 DEGREES.

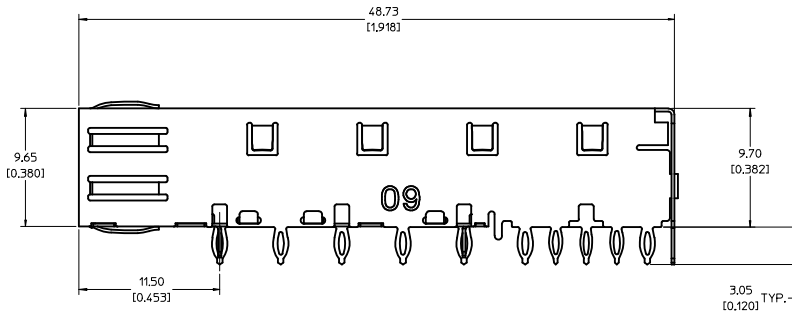
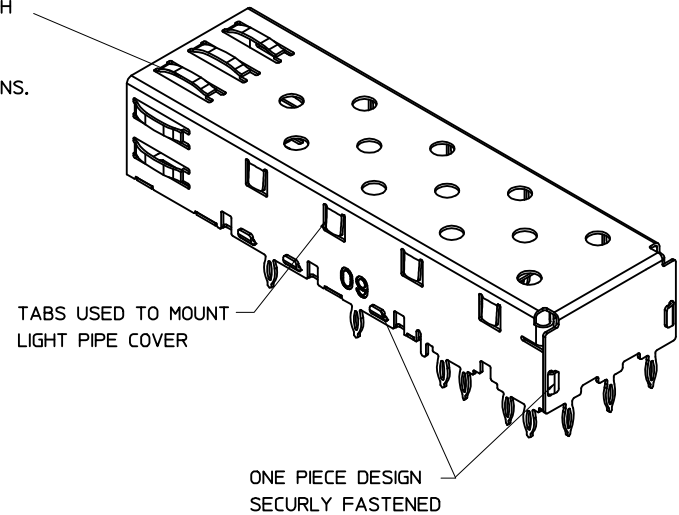
UPDATED 3D MODELS IEC NO: USY2008-01553 DRAWN:CCOX 2007/10/05 CHYK: 2007/10/21 APPR:RMAHMOOD 2007/10/23	QUALITY SYMBOLS =0 =0	GENERAL TOLERANCES (UNLESS SPECIFIED)		DIMENSION STYLE <b>MM/IN</b>	SCALE <b>1:1</b>	DESIGN UNITS <b>METRIC</b>	THIRD ANGLE PROJECTION		
		4 PLACES ± --- ± --- 3 PLACES ± --- ± .005 2 PLACES ± 0.13 ± .01 1 PLACE ± 0.25 ± ---	mm      INCH	DRAWN BY      DATE CCOX            2006/11/22	CHECKED BY      DATE RMAHMOOD      2006/11/22	TITLE <b>SFP ONE PIECE CAGE PRESS-FIT (0.120 LEGS)</b>			
		ANGULAR ± 1 °		APPROVED BY      DATE	MATERIAL NO. <b>747370009</b>		MOLEX INCORPORATED		
		DRAFT WHERE APPLICABLE MUST REMAIN WITHIN DIMENSIONS		SIZE <b>D</b>		DOCUMENT NO. <b>SD-74737-009</b>	SHEET NO. <b>4 OF 4</b>		



**BOTTOM VIEW**



SPRING FINGER GASKET WITH TWO POINTS OF CONTACT. COMPLIES WITH (SFP) MSA BOARD AND BEZEL LOCATIONS.



**NOTES:**

1. ALL PART TO BE 100 PERCENT INSPECTED.
2. PRESS FIT LEGS, 0.120 INCHES LONG. 1.57 [0.062] MINIMUM PCB THICKNESS.
3. THIS CAGE IS FOR SINGLE SIDED USE ONLY.
4. CAN BE USED WITH THE FOLLOWING LIGHT PIPE PART NUMBERS:

747260001 - LIGHT PIPE FROM BACK TO TOP  
(REFER TO DOCUMENT SD-74726-001)

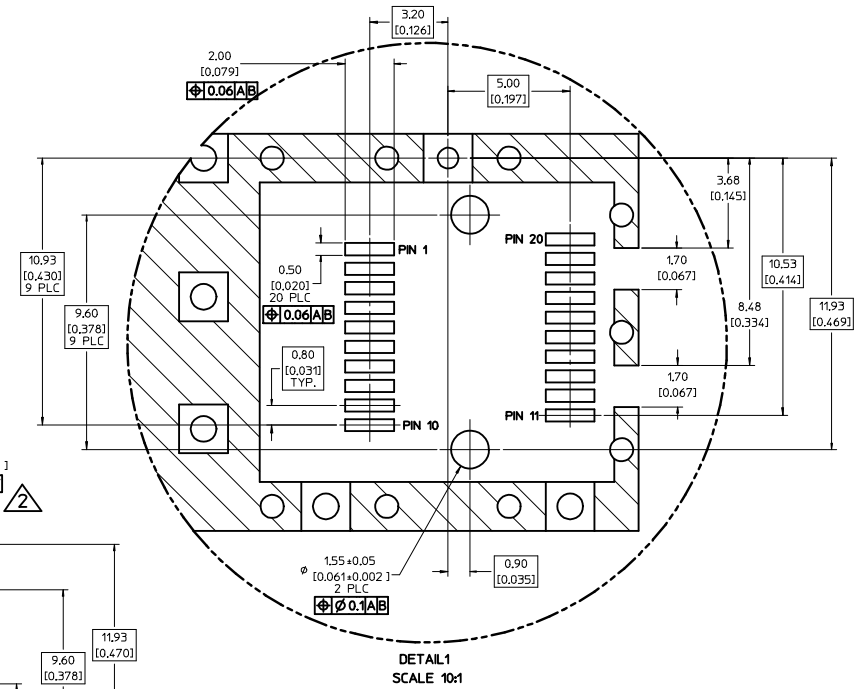
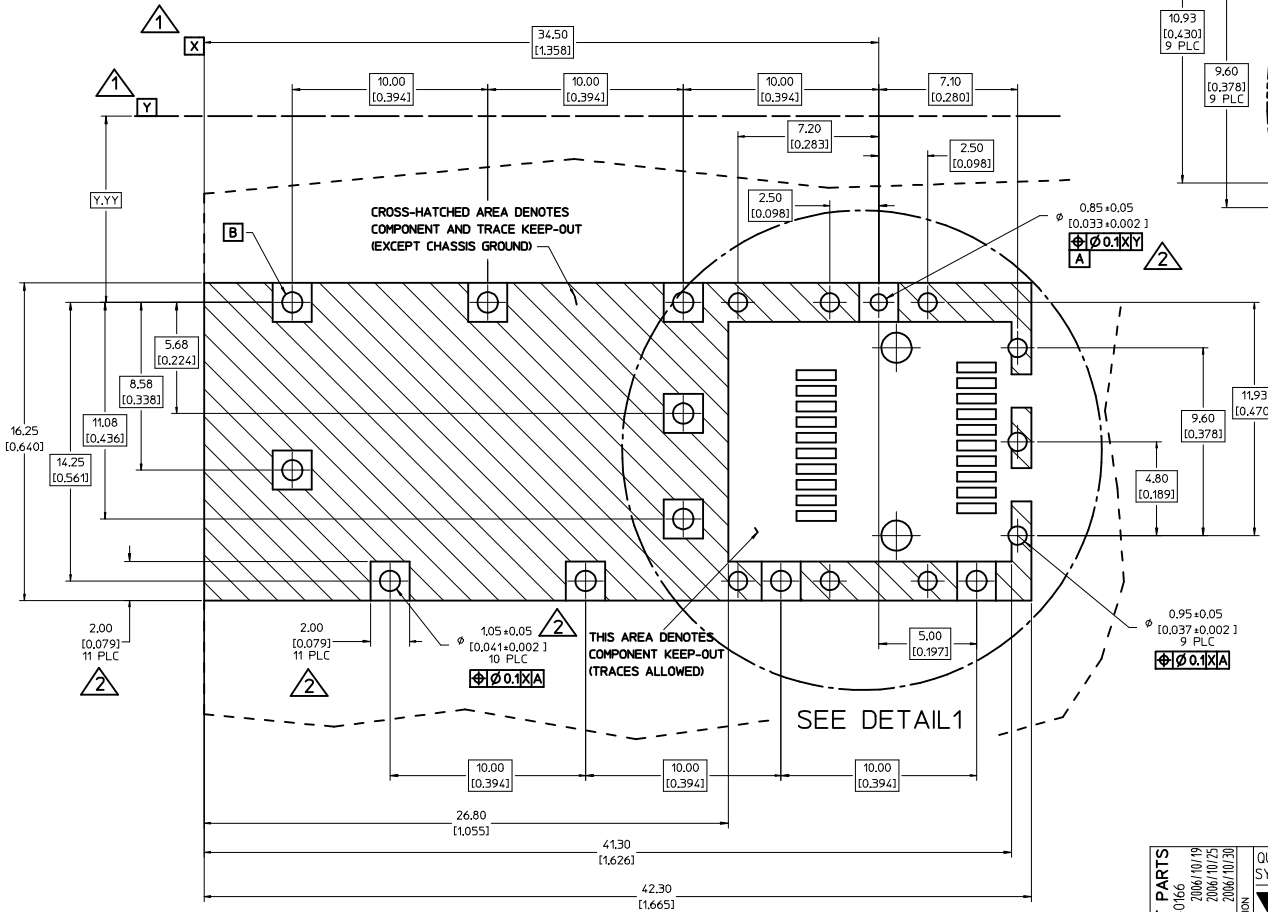
747260002 - LIGHT PIPE FROM SIDE TO TOP  
(REFER TO DOCUMENT SD-74726-002)

5. MATERIAL: COPPER ALLOY  
PLATING: PRE-PLATED WITH NICKEL

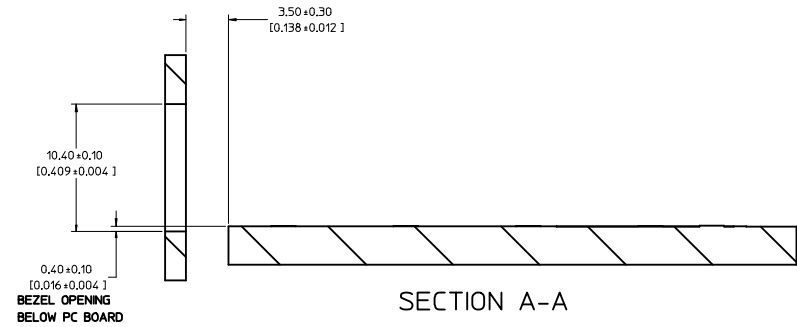
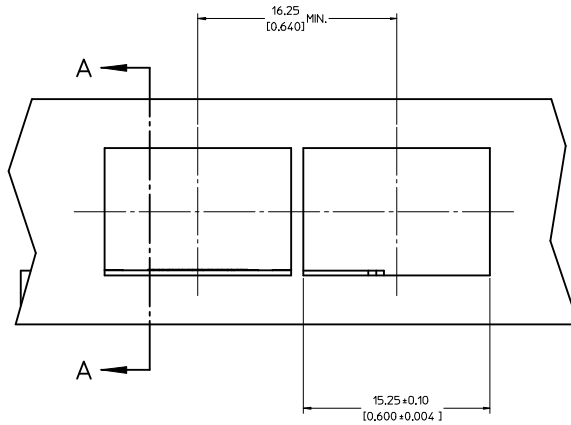
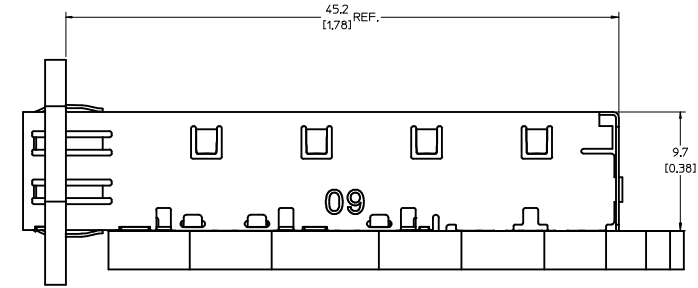
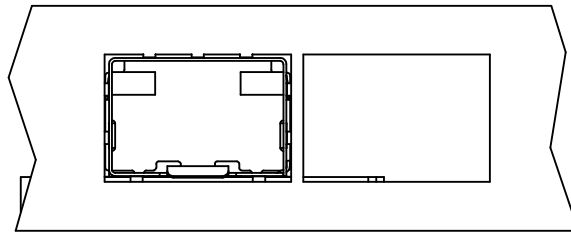
6. THIS PART MEETS THE RESTRICTION OF HAZARDOUS SUBSTANCES IN ELECTRICAL AND ELECTRONIC EQUIPMENT (ROHS) DIRECTIVE (2002/95/EC).

<b>100% INSPECT PARTS</b> EC NO: USY2007-0166 DRAWN BY: CCOX CHKD: CCOX APPR: RMAHMOOD DATE: 2006/10/19 DATE: 2006/10/25 DATE: 2006/10/30	QUALITY SYMBOLS ▽=0 ▽=0	GENERAL TOLERANCES (UNLESS SPECIFIED) <table border="1"> <tr> <th></th> <th>mm</th> <th>INCH</th> </tr> <tr> <td>4 PLACES</td> <td>±.005</td> <td>±.0005</td> </tr> <tr> <td>3 PLACES</td> <td>±.005</td> <td>±.0005</td> </tr> <tr> <td>2 PLACES</td> <td>±0.13</td> <td>±.01</td> </tr> <tr> <td>1 PLACE</td> <td>±0.25</td> <td>±.01</td> </tr> </table> ANGULAR ± 1°		mm	INCH	4 PLACES	±.005	±.0005	3 PLACES	±.005	±.0005	2 PLACES	±0.13	±.01	1 PLACE	±0.25	±.01	DIMENSION STYLE MM/IN	SCALE 5:1	DESIGN UNITS METRIC	THIRD ANGLE PROJECTION
		mm	INCH																		
	4 PLACES	±.005	±.0005																		
	3 PLACES	±.005	±.0005																		
2 PLACES	±0.13	±.01																			
1 PLACE	±0.25	±.01																			
DRAWN BY: CCOX DATE: 2006/10/19	CHECKED BY: RMAHMOOD DATE: 2006/10/19	APPROVED BY:	MATERIAL NO. 747370009	DOCUMENT NO. SD-74737-020	TITLE SFP ONE PIECE CAGE PRESS-FIT (0.120 LEGS) 100% INSPECTION REQUIRED	MOLEX INCORPORATED															
DRAFT WHERE APPLICABLE MUST REMAIN WITHIN DIMENSIONS			SIZE D	THIS DRAWING CONTAINS INFORMATION THAT IS PROPRIETARY TO MOLEX INCORPORATED AND SHOULD NOT BE USED WITHOUT WRITTEN PERMISSION			SHEET NO. 1 OF 3														

- DATUM AND BASIC DIMENSIONS ESTABLISHED BY CUSTOMER.
- PADS AND VIAS ARE CHASSIS GROUND.
- HOLE LAYOUT SHOWN IS FOR SINGLE SIDED MOUNTING ONLY.
- CONNECTOR PAD LAYOUT PER SFP MSA, WILL ACCOMMODATE MOLEX CONNECTOR SERIES 74441 OR EQUIVALENT.



<b>100% INSPECT PARTS</b> IEC NO: USY2007-0166 DRAWN: CCOX 2006/10/19 CHYK: 2006/10/25 APPR: RMAHMOOD 2006/10/20	QUALITY SYMBOLS	GENERAL TOLERANCES (UNLESS SPECIFIED)	DIMENSION STYLE	SCALE	DESIGN UNITS	THIRD ANGLE PROJECTION	
	$\nabla=0$ $\nabla=0$	mm INCH 4 PLACES $\pm$ --- $\pm$ --- 3 PLACES $\pm$ --- $\pm$ .005 2 PLACES $\pm$ 0.13 $\pm$ .01 1 PLACE $\pm$ 0.25 $\pm$ --- ANGULAR $\pm$ 1°	MM/IN	8:1	METRIC		
	DESCRIPTION	DRAFT WHERE APPLICABLE MUST REMAIN WITHIN DIMENSIONS	DRAWN BY CCOX	DATE 2006/10/19	CHECKED BY RMAHMOOD	DATE 2006/10/19	APPROVED BY
			MATERIAL NO. 747370009	DOCUMENT NO. SD-74737-020	<b>SFP ONE PIECE CAGE PRESS-FIT (0.120 LEGS)</b> <b>100% INSPECTION REQUIRED</b>		MOLEX INCORPORATED
						SHEET NO. 2 OF 3	



<b>100% INSPECT PARTS</b> IEC NO: USY2007-0166 DRAWN: CCOX 2006/10/19 CHYK: 2006/10/25 APPROV: RMAHMOOD 2006/10/30	<b>QUALITY SYMBOLS</b> ▽=0 ▽=0	<b>GENERAL TOLERANCES (UNLESS SPECIFIED)</b> <table border="1"> <thead> <tr> <th></th> <th>mm</th> <th>INCH</th> </tr> </thead> <tbody> <tr> <td>4 PLACES</td> <td>±---</td> <td>±---</td> </tr> <tr> <td>3 PLACES</td> <td>±---</td> <td>±.005</td> </tr> <tr> <td>2 PLACES</td> <td>±0.13</td> <td>±.01</td> </tr> <tr> <td>1 PLACE</td> <td>±0.25</td> <td>±---</td> </tr> </tbody> </table>		mm	INCH	4 PLACES	±---	±---	3 PLACES	±---	±.005	2 PLACES	±0.13	±.01	1 PLACE	±0.25	±---	<b>DIMENSION STYLE</b> MM/IN	SCALE 5:1	DESIGN UNITS METRIC	THIRD ANGLE PROJECTION
		mm	INCH																		
	4 PLACES	±---	±---																		
	3 PLACES	±---	±.005																		
2 PLACES	±0.13	±.01																			
1 PLACE	±0.25	±---																			
MATERIAL NO. <b>747370009</b>	DOCUMENT NO. <b>SD-74737-020</b>	TITLE <b>SFP ONE PIECE CAGE          PRESS-FIT (0.120 LEGS)          100% INSPECTION REQUIRED</b>	DRAWN BY CCOX	DATE 2006/10/19	CHECKED BY RMAHMOOD	DATE 2006/10/19															
SIZE <b>D</b>	THIS DRAWING CONTAINS INFORMATION THAT IS PROPRIETARY TO MOLEX INCORPORATED AND SHOULD NOT BE USED WITHOUT WRITTEN PERMISSION	MOLEX INCORPORATED	SHEET NO. 3 OF 3																		
DRAFT WHERE APPLICABLE MUST REMAIN WITHIN DIMENSIONS																					