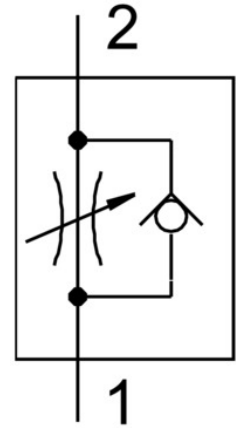


One-way flow control valve GRLZ-M5-QS-4-D

Part number: 193154

FESTO



Data sheet

| Feature | Value |
|---|--|
| Valve function | Supply air flow control non-return function |
| Pneumatic connection 1 | QS-4 |
| Pneumatic connection 2 | M5 |
| Adjusting element | Slotted screw |
| Type of mounting | Screw-in |
| Standard nominal flow rate in flow control direction | 110 l/min |
| Standard nominal flow rate in non-return direction | 65 l/min ... 110 l/min |
| Ambient temperature | -10 °C ... 60 °C |
| Maritime classification | See certificate |
| Mounting position | Any |
| Symbol | 00991453 |
| Operating pressure for entire temperature range | 0.2 bar ... 10 bar |
| Standard flow rate in flow control direction 6 → 0 bar | 160 l/min |
| Standard flow rate in non-return direction at 6 → 0 bar | 150 l/min ... 180 l/min |
| Operating medium | Compressed air as per ISO 8573-1:2010 [7:4:4] |
| Information on operating and pilot media | Operation with oil lubrication possible (required for further use) |
| LABS (PWIS) conformity | VDMA24364-B1/B2-L |
| Temperature of medium | -10 °C ... 60 °C |
| Nominal tightening torque | 0.8 Nm |
| Tolerance for nominal tightening torque | ± 10% |
| Product weight | 13 g |
| Material of screwed trunnion | Brass |
| Note on materials | RoHS-compliant |
| Seals material | NBR |
| Releasing ring material | POM |
| Material of adjusting screw | Brass |
| Swivel joint material | Die-cast zinc Chromated |