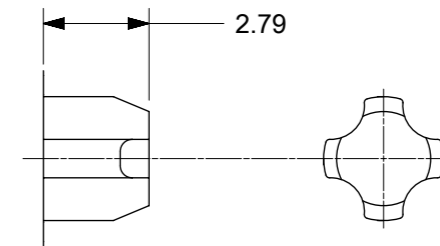


PEG OPTION "A"
SNAP-FIT PEG
SEE NOTE #7
(SCALE NTS)

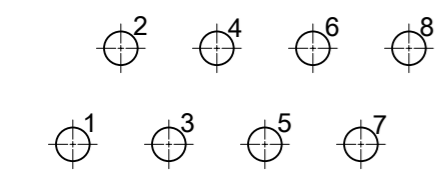


PEG OPTION "B"
PRESS-FIT PEG
SEE NOTE #7
(SCALE NTS)

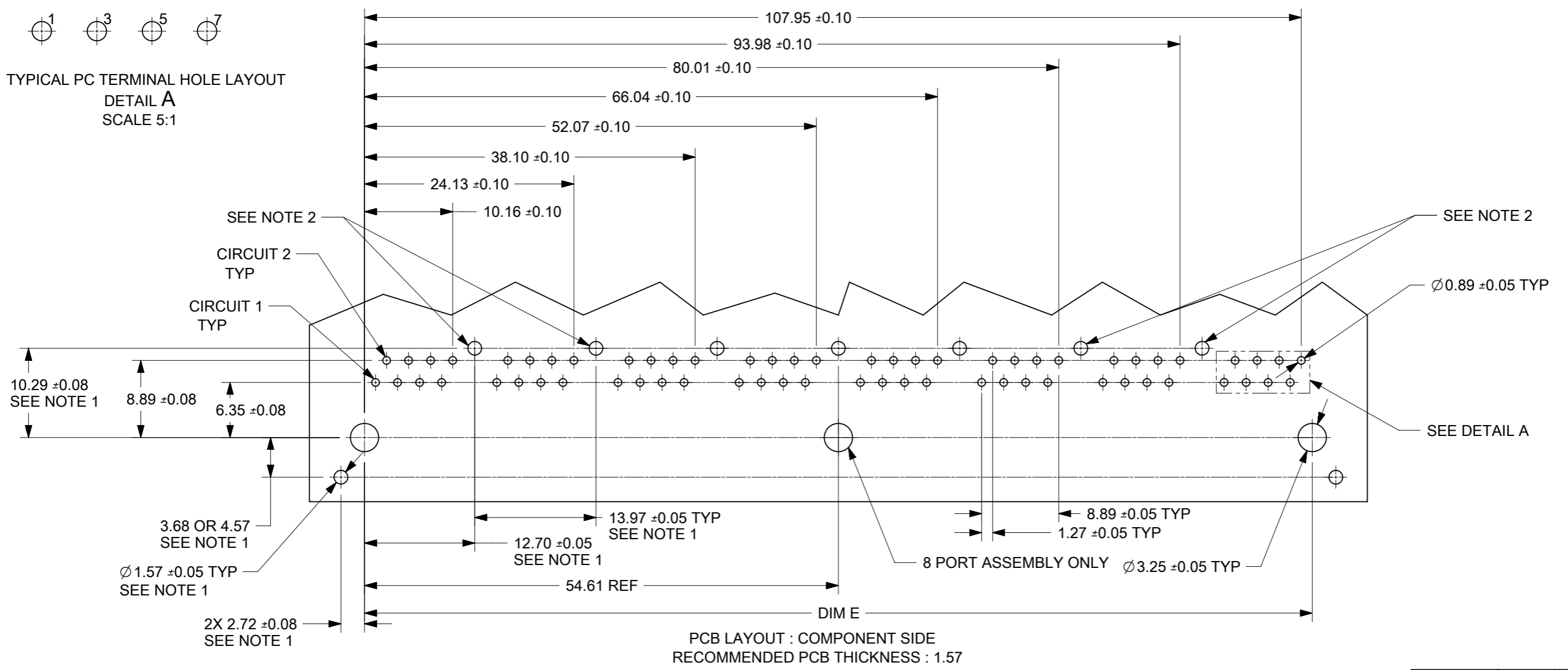
"X"=NOT TOOLED	ASSEMBLY MATERIAL NUMBER	NUMBER OF PORTS	PEG OPTION	CENTER PEG	DIM A	DIM D
	441500001	2	A	NO	30.48	25.40
	441500017	2	B	NO	30.48	25.40
x	441500002	4	A	NO	58.42	53.34
x	441500018	4	B	NO	58.42	53.34
x	441500003	6	A	NO	86.36	81.28
x	441500019	6	B	NO	86.36	81.28
x	441500004	8	A	YES	114.30	109.22
x	441500020	8	B	YES	114.30	109.22

- NOTES:
- MATERIAL:
HOUSING: NYLON, GLASS FILLED, UL94V-0, COLOR: BLACK
TERMINALS: PHOSPHOR BRONZE
 - FINISH:
TERMINALS:
SELECT GOLD IN CONTACT AREA: 50 MICROINCHES / 1.27 MICROMETERS MIN.,
SELECT MATTE TIN IN PC TAIL AREA: 100 MICROINCHES / 2.54 MICROMETERS MIN.,
WITH OVERALL NICKEL UNDERPLATE: 50 MICROINCHES / 1.27 MICROMETERS MIN.
 - PRODUCT SPECIFICATION: PS-44050-003.
 - PACKAGING SPECIFICATION:
UNSHIELDED CONNECTOR ASSEMBLIES IN THERMOFORMED TRAYS PER MOLEX PACKAGING SPECIFICATION PK-44150-005.
 - MATES WITH: MODULAR PLUGS THAT CONFORM TO FCC REGULATION PART 68.5.
 - PC BOARD LAYOUTS AND PANEL CUT-OUT SHOWN ON PAGE (3) OF (3).
 - CONNECTOR AVAILABLE WITH EITHER PEG OPTION "A" (SNAP-FIT) OR PEG OPTION "B" (PRESS-FIT). THIS DRAWING SHOWS PEG OPTION "A".
 - TERMINAL LENGTHS MAY BE DIFFERENT FROM TERMINAL TO TERMINAL.
 - THIS PART CONFORMS TO CLASS B REQUIREMENTS OF COSMETIC SPECIFICATION PS-45499-002 WITH THE EXCEPTION OF THE SURFACE INDICATED WHICH IS A CLASS C SURFACE.

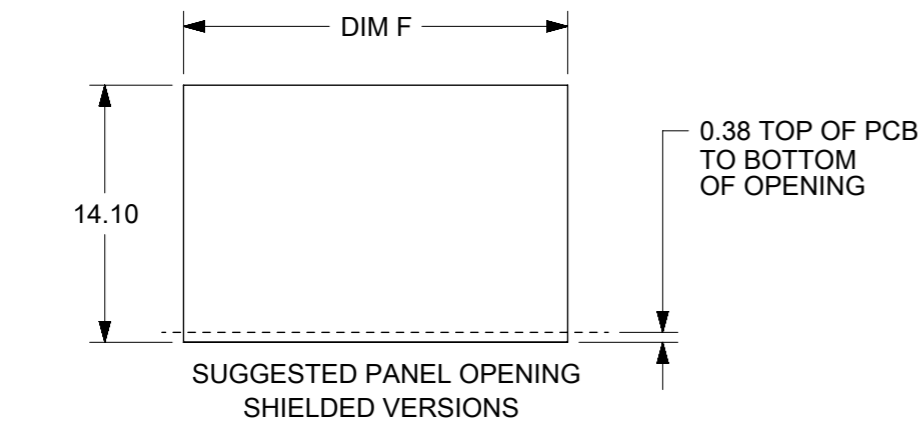
QUALITY SYMBOLS ▽ = 0 ▽ = 0 ▽ = 0 ▽ = 0 ▽ = 0 ▽ = 0 ▽ = 0 ▽ = 0 ▽ = 0 ▽ = 0 ▽ = 0 ▽ = 0	THIS DRAWING CONTAINS INFORMATION THAT IS PROPRIETARY TO MOLEX ELECTRONIC TECHNOLOGIES, LLC AND SHOULD NOT BE USED WITHOUT WRITTEN PERMISSION											
	MIGRATED & REDRAWN EC NO: 167139 DRWN: AFENG02 CHK'D: AFENG02 APPR: KLANG	2017/10/23 2017/11/10 2017/11/10	GENERAL TOLERANCES (UNLESS SPECIFIED)		DIMENSION UNITS	SCALE						
			ANGULAR TOL ± 0.5 °		mm	2:1						
			4 PLACES ±	3 PLACES ±	2 PLACES ± 0.25	1 PLACE ±					0 PLACES ±	DRWN BY
DRAFT WHERE APPLICABLE MUST REMAIN WITHIN DIMENSIONS		A3		THIRD ANGLE PROJECTION		AFENG02					2017/04/25	
				CHK'D BY		DATE		CATEGORY 5 MODULAR JACK ASSEMBLIES, GANGED				
				LKATARZIENE		2017/04/26		PRODUCT CUSTOMER DRAWING				
				APPR BY		DATE		SERIES	MATERIAL NUMBER	CUSTOMER		
				KLANG		2017/04/26		44150	SEE CHART	GENERAL MARKET		
				DRAWING SIZE		THIRD ANGLE PROJECTION		DOCUMENT NUMBER		DOC TYPE	DOC PART	SHEET NUMBER
				A3				SD-44150-002		PSD	001	1 OF 3



TYPICAL PC TERMINAL HOLE LAYOUT
DETAIL A
SCALE 5:1



PCB LAYOUT : COMPONENT SIDE
RECOMMENDED PCB THICKNESS : 1.57



SUGGESTED PANEL OPENING
SHIELDED VERSIONS

0.38 TOP OF PCB
TO BOTTOM
OF OPENING

- NOTES:
1. DIMENSIONS REFER TO SHIELDED ASSEMBLIES ONLY
 2. SHIELD PCB GROUND TAB HOLES SPECIFIED NOT PRESENT FOR 441500033 USAGE

NUMBER OF PORTS	DIM E	DIM F
2	25.40	31.88
4	53.34	59.82
6	81.28	87.86
8	109.22	115.70

THIS DRAWING CONTAINS INFORMATION THAT IS PROPRIETARY TO MOLEX ELECTRONIC TECHNOLOGIES, LLC AND SHOULD NOT BE USED WITHOUT WRITTEN PERMISSION														
QUALITY SYMBOLS 	MIGRATED & REDRAWN EC NO: 167139 DRWN: AFENG02 CHK'D: AFENG02 REV APPR: KLANG	GENERAL TOLERANCES (UNLESS SPECIFIED) ANGULAR TOL ± 0.5 °		DIMENSION UNITS mm	SCALE 2:1									
		4 PLACES ±	3 PLACES ±	2 PLACES ± 0.25	1 PLACE ±							0 PLACES ±	DRWN BY AFENG02	DATE 2017/04/25
		DRAFT WHERE APPLICABLE MUST REMAIN WITHIN DIMENSIONS					CHK'D BY LKATARZIENE	DATE 2017/04/26	PRODUCT CUSTOMER DRAWING					
							APPR BY KLANG	DATE 2017/04/26						
						DRAWING SIZE A3	THIRD ANGLE PROJECTION 	SERIES 44150	MATERIAL NUMBER SEE CHART	CUSTOMER GENERAL MARKET				
						DOCUMENT NUMBER SD-44150-002		DOC TYPE PSD	DOC PART 001	SHEET NUMBER 3 OF 3				