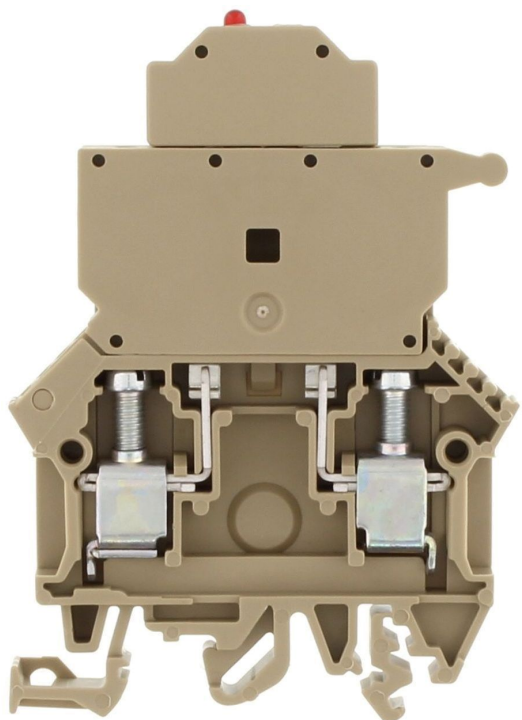


1107.2 SIK 10/2 LED's(RD)/24V DC BG



Fuse-disconnect terminal, Screw connection, Mounting type: Mounting rail TS 35/7.5 and TS 32, Rated cross-section: 10 mm², Width: 8 mm, Colour: Beige

Business data

| | |
|--|------------------------------|
| Article number | <u>1107.2</u> |
| Article name | SIK 10/2 LED's(RD)/24V DC BG |
| GTIN (EAN) | 4044211016920 |
| Packaging unit | 25 |
| Quantity unit | PC |
| Weight per piece (not including packaging) | 25.2 g |
| Weight per piece (including packaging) | 27.8 g |
| Unit of weight | G |
| Customs number | 85369010 |
| Country of origin | DE |
| Product description | Fuse-disconnect terminal |
| Colour | Beige |

1107.2 SIK 10/2 LED's(RD)/24V DC BG

Technical data

Dimensions

| | |
|------------------|-------|
| Length | 60 mm |
| Width | 8 mm |
| Height TS 35/7.5 | 87 mm |
| Height TS 32 | 83 mm |

Ratings

| | |
|---|--------------------|
| Rated voltage (determined by the illuminated display and fuse being used) | 24 DC V |
| Rated current (as fuse-disconnect terminal) | 10 A |
| Rated cross-section | 10 mm ² |
| Rated impulse voltage | 8 kV |
| Overvoltage category | III |
| Contamination degree | 3 |

Connection data

| | |
|--|----------------------|
| Connection principle | Screw connection |
| Connection position | Lateral |
| Connections | 2 / extraction lever |
| Number of terminals per level | 2 |
| Number of levels | 1 |
| Wire cross-section single-core (rigid) / stranded, min. | 0.2 mm ² |
| Wire cross-section single core (rigid)/stranded, max. | 10 mm ² |
| Wire cross-section stranded, min. | 0.2 mm ² |
| Wire cross-section stranded, max. | 10 mm ² |
| Wire cross-section stranded with wire-end ferrules, min. | 0.2 mm ² |
| Wire cross-section stranded with wire-end ferrules, max. | 10 mm ² |
| Wire cross-section AWG, min. | 22 |
| Wire cross-section AWG, max. | 8 |
| Stripping length | 12 mm |
| Screw head | Slotted |
| Screw threading | M 4 |
| Tightening torque, min. | 1.2 Nm |
| Tightening torque, max. | 2 Nm |

1107.2 SIK 10/2 LED's(RD)/24V DC BG

Technical data

Materials

| | |
|---------------------------|---------------|
| Insulation housing | Polyamide 6.6 |
| Flammability class UL 94 | V-2 |
| Working temperature, min. | -40 °C |
| Working temperature, max. | 105 °C |

Further technical data

| | |
|--|-----------------------------------|
| Mounting type | Mounting rail TS 35/7.5 and TS 32 |
| Fuse size | 5 x 20 / 5 x 25 / 5 x 30 mm |
| Gauge plug acc. to EN 60 947-1 | A5 |
| End plate required | ✓ |
| Voltage fuse | 250 V |
| Voltage illuminated display | 24 DC V |
| Cross-current via illuminated display | < 5 mA |
| Version of fuse holder | Swivelling |
| Type of display element (defect display) | LED |
| Version of fuse cartridge | G fuse 5x20 / 5x25 / 5x30 |
| Supply voltage (defect display), max. | 24 |
| Type of voltage (defect display) | DC |
| Colour of lamp | Red |

Environmental Product Compliance

| | |
|--------------------------------|------------|
| REACH Conform | yes |
| REACH Reference date | 2023-01-17 |
| REACH Candidate Substance Note | No |
| RoHS Conform | yes |

Approvals

Standards and regulations

| | |
|------------------------|-------------------|
| EAC approval | TR ZU 004/2011 |
| EAC approval granted | yes |
| Nemko approval | EN 60947-7-3:2002 |
| Nemko approval granted | yes |

cUL Recognized

| | |
|--|--------------|
| cUL approval | C22.2 No 158 |
| cUL Usegroup B: rated voltage | 24DC V |
| cUL Usegroup B: rated current | 10 A |
| cUL Usegroup C: rated voltage | 24DC V |
| cUL Usegroup C: rated current | 10 A |
| cUL wire cross-section single-core (rigid) AWG, min. | 22 |
| cUL wire cross-section single-core (rigid) AWG, max. | 12 |
| cUL wire cross-section stranded AWG, min. | 22 |
| cUL wire cross-section stranded AWG, max. | 12 |
| cUL torque | 16 Nm |
| cUL wire material | Cu |
| cUL Recognized | 1 |

Approvals

KEMA KEUR approval

| | |
|---|-----------------------------|
| KEMA KEUR approval | EN 60947-7-3:2009 |
| KEMA KEUR approval granted | yes |
| KEMA rated voltage | 500 V |
| KEMA voltage fuse, max. | 250 V |
| KEMA rated current | 10 A |
| KEMA rated impulse voltage | 8 kV |
| KEMA wire cross-section single core (rigid), min. | 2 mm ² |
| KEMA wire cross-section single-core (rigid), max. | 10 mm ² |
| KEMA wire cross-section stranded, min. | 2 mm ² |
| KEMA wire cross-section stranded, max. | 10 mm ² |
| KEMA torque, min. | 12 Nm |
| KEMA torque, max. | 2 Nm |
| KEMA fuse size | 5 x 20 / 5 x 25 / 5 x 30 mm |
| KEMA power loss in singular arrangement - overload and short-circuit protection, max. | 2,5 / 6,3 W / A |
| KEMA power loss in compound arrangement - overload and short-circuit protection, max. | 2,5 / 6,3 W / A |
| KEMA power loss in singular arrangement - only short-circuit protection, max. | 4 / 10 W / A |
| KEMA power loss in compound arrangement - only short-circuit protection, max. | 4 / 6,3 W / A |

UL Recognized

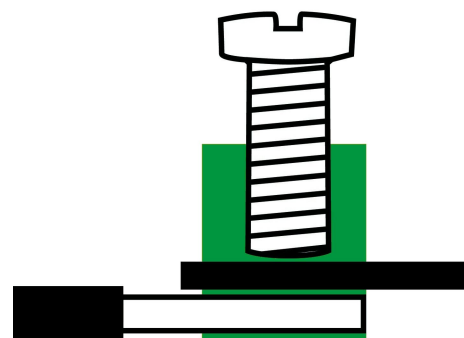
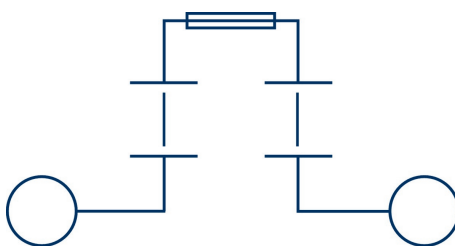
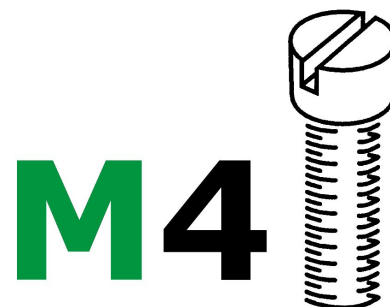
| | |
|---|----------|
| UL approval | UL 1059 |
| UL Usegroup B: rated voltage | 24 DC V |
| UL Usegroup B: rated current | 10 A |
| UL Usegroup C: rated voltage | 24 DC V |
| UL Usegroup C: rated current | 10 A |
| UL wire cross-section single-core (rigid) AWG, min. | 22 |
| UL wire cross-section single-core (rigid) AWG, max. | 12 |
| UL wire cross-section stranded AWG, min. | 22 |
| UL wire cross-section stranded AWG, max. | 12 |
| UL torque | 16 Lb In |
| UL wire material | Cu |
| UL factory wiring | 1 |
| UL field wiring | 1 |
| UL Recognized | 1 |

Approvals

German Lloyd approval

| | |
|----------------------------|---|
| DNV GL Certificate number | TAE00002JJ |
| DNV GL Location Classes | Temperature: B, Humidity: B, Vibration: A |
| DNV GL approval granted | 1 |
| DNV GL rated cross-section | 10 mm ² |
| DNV GL rated current | 10 A |
| DNV GL rated voltage | 500 V |
| DNV GL test standard | IEC 60947-7-3:2002 |

Media



1107.2 SIK 10/2 LED's(RD)/24V DC BG

Accessories

End plate



End plate, Width: 2 mm, Colour: Beige

| Article number | Article name | GTIN (EAN) | Packaging unit |
|----------------|--------------|---------------|----------------|
| <u>2762.2</u> | AP 10 BG | 4044211054922 | 20 |

1107.2 SIK 10/2 LED's(RD)/24V DC BG

Insulated external cross-connector



External insulated cross-connector, No. of poles: 4, Mounting type: Plug in, Width: 32.3 mm, Rated current: 57 A; Colour: Yellow

| Article number | Article name | GTIN (EAN) | Packaging unit |
|------------------------|---------------|---------------|----------------|
| 3442.8 | AQI 4/8/18 YE | 4044211137564 | 50 ST |



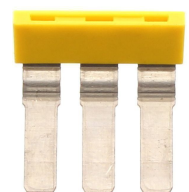
External insulated cross-connector, No. of poles: 10, Mounting type: Plug in, Width: 80.9 mm, Rated current: 57 A; Colour: Yellow

| Article number | Article name | GTIN (EAN) | Packaging unit |
|------------------------|----------------|---------------|----------------|
| 3443.8 | AQI 10/8/18 YE | 4044211137588 | 10 ST |



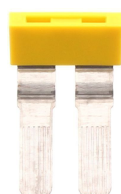
External insulated cross-connector, No. of poles: 60, Mounting type: Plug in, Rated current: 57 A; Colour: Yellow

| Article number | Article name | GTIN (EAN) | Packaging unit |
|------------------------|----------------|---------------|----------------|
| 3444.8 | AQI 60/8/18 YE | 4044211137571 | 1 ST |



External insulated cross-connector, No. of poles: 3, Mounting type: Plug in, Width: 24.2 mm, Rated current: 57 A; Colour: Yellow

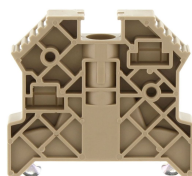
| Article number | Article name | GTIN (EAN) | Packaging unit |
|------------------------|---------------|---------------|----------------|
| 3441.8 | AQI 3/8/18 YE | 4044211137557 | 50 ST |



External insulated cross-connector, No. of poles: 2, Mounting type: Plug in, Width: 16.1 mm, Rated current: 57 A; Colour: Yellow

| Article number | Article name | GTIN (EAN) | Packaging unit |
|------------------------|---------------|---------------|----------------|
| 3440.8 | AQI 2/8/18 YE | 4044211137540 | 50 ST |

End stop



End stop, Mounting type: Mounting rail TS 35/7.5, Width: 9.5 mm, Colour: Beige

| Article number | Article name | GTIN (EAN) | Packaging unit |
|------------------------|---------------|---------------|----------------|
| 2828.0 | ES 35/K/ST BG | 4044211055547 | 50 |

1107.2 SIK 10/2 LED's(RD)/24V DC BG

Solid link



Solid link, Colour: natural

| Article number | Article name | GTIN (EAN) | Packaging unit |
|----------------|--------------|---------------|----------------|
| <u>2470.0</u> | KH 5 | 4044211052607 | 100 ST |

Quick marking



Terminal marker / Pocket Maxicard, Length: 5 mm, Width: 8 mm, Colour: White

| Article number | Article name | GTIN (EAN) | Packaging unit |
|----------------|----------------|---------------|----------------|
| <u>9323.7</u> | PMC SB 8/40 WH | 4044211129231 | 400 ST |

Screwdriver



Screwdriver with bare blade, Colour: Black-grey

| Article number | Article name | GTIN (EAN) | Packaging unit |
|----------------|--------------|---------------|----------------|
| <u>1087.0</u> | SDB 0,8x4,0 | 4044211014803 | 1 ST |