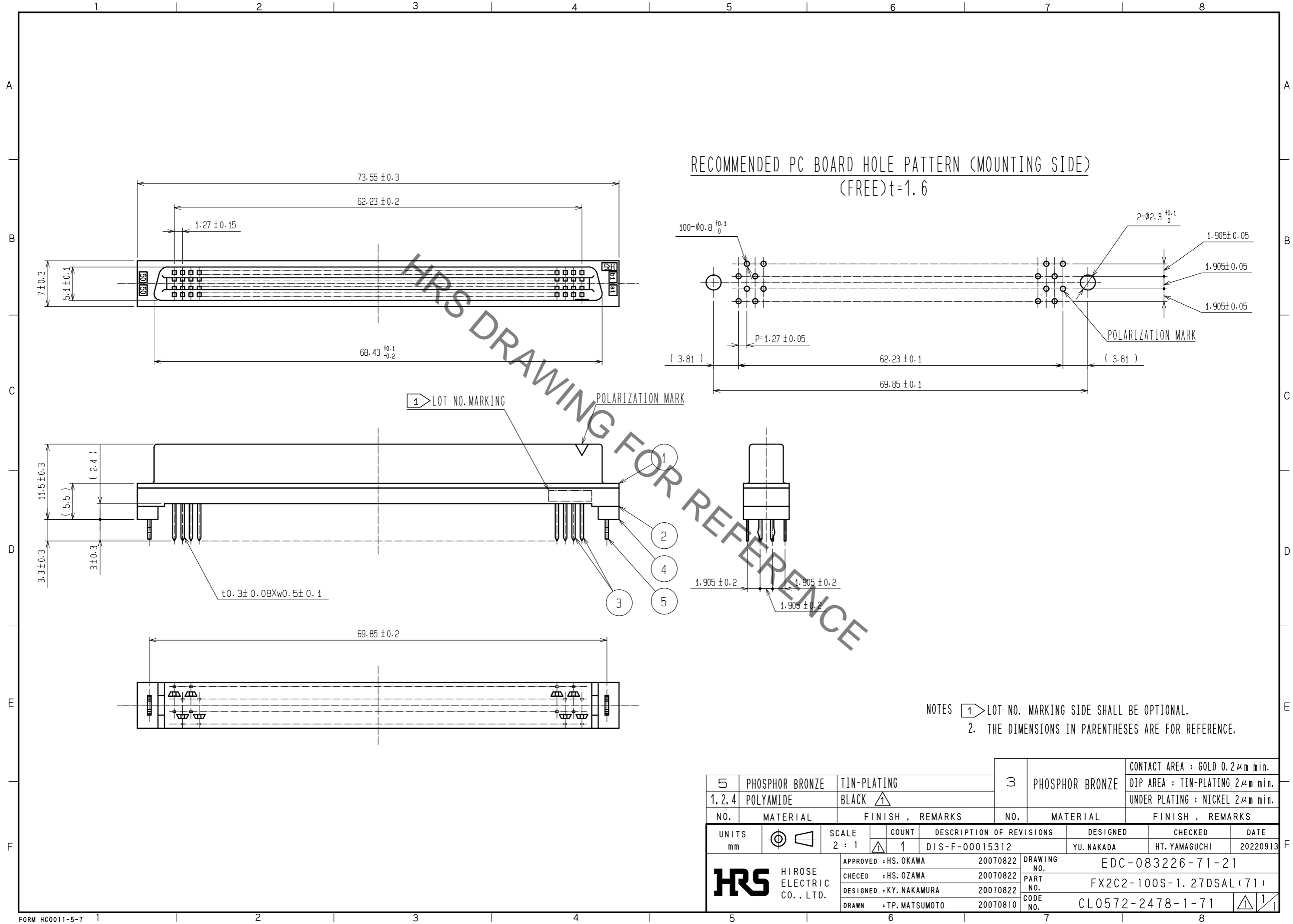


May.1.2023 Copyright 2023 HIROSE ELECTRIC CO., LTD. All Rights Reserved.
In case of consideration for using Automotive equipment / device which demand high reliability, kindly contact our sales window correspondents.



5	PHOSPHOR BRONZE	TIN-PLATING	3	PHOSPHOR BRONZE	CONTACT AREA : GOLD 0.2 μ m min. DIP AREA : TIN-PLATING 2 μ m min. UNDER PLATING : NICKEL 2 μ m min.		
1, 2, 4	POLYAMIDE	BLACK \blacktriangle					
NO.	MATERIAL	FINISH . REMARKS	NO.	MATERIAL	FINISH . REMARKS		
UNITS mm	\odot \triangleleft	SCALE 2 : 1	COUNT \blacktriangle 1	DESCRIPTION OF REVISIONS DIS-F-00015312	DESIGNED YU. NAKADA	CHECKED HT. YAMAGUCHI	DATE 20220913
HRS HIROSE ELECTRIC CO., LTD.		APPROVED : HS. OKAWA	20070822	DRAWING NO. EDC-083226-71-21			
		CHECED : HS. OZAWA	20070822	PART NO. FX2C2-100S-1. 27DSAL (71)			
		DESIGNED : KY. NAKAMURA	20070822	CODE NO. CL0572-2478-1-71			
		DRAWN : TP. MATSUMOTO	20070810				