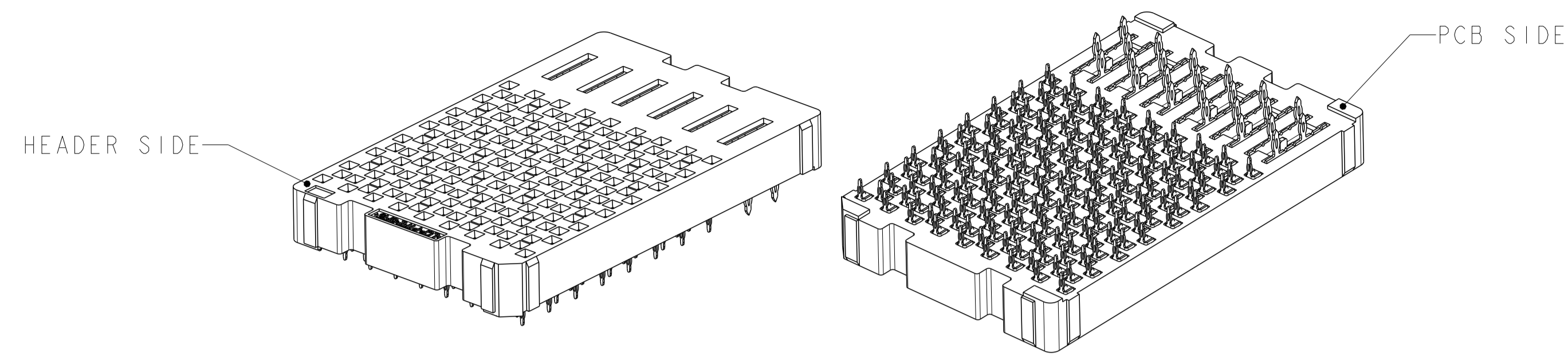
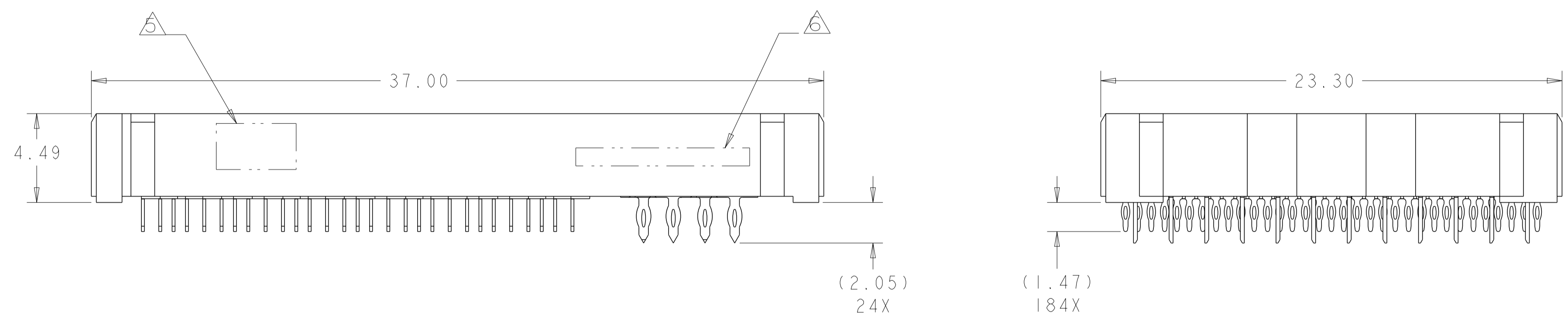
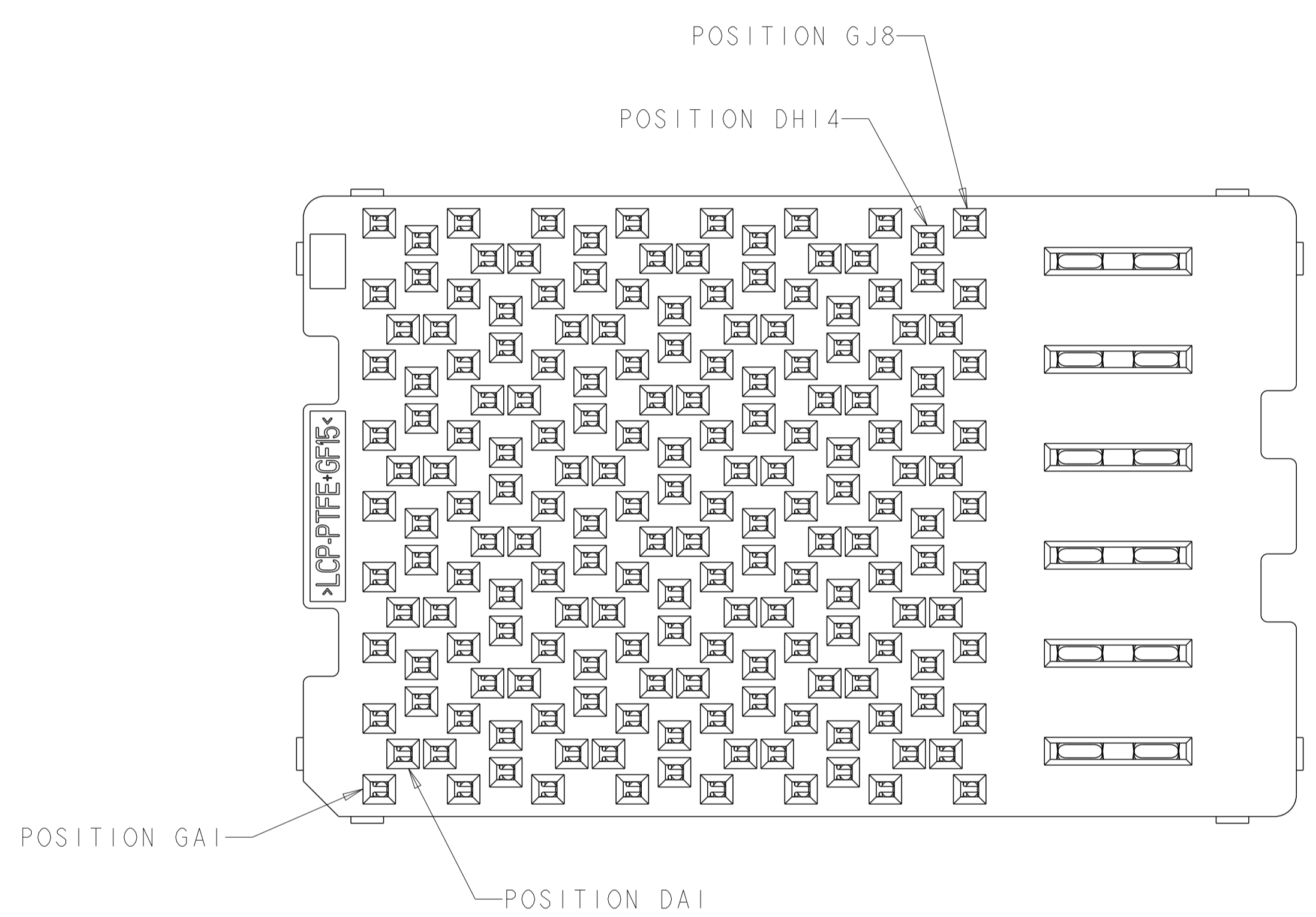


LOC		DIST		REVISIONS			
GP	00	P	LTN	DESCRIPTION	DATE	OWN	APVD
		A		ECR-21-122345	23NOV22	TL	HL
							DT



- 1 MATERIAL:  
HOUSING: THERMOPLASTIC, FLAMMABILITY RATING UL94-V0  
CONTACT: COPPER ALLOY
- 2. CONFORMS TO THE REQUIREMENTS OF TE PRODUCT SPECIFICATION, 108-2375; BASED ON TELCORDIA GR-1217-CORE FOR SYSTEM QUALITY LEVEL III, APPLICATIONS IN CONTROLLED ENVIRONMENTS (CENTRAL OFFICE).  
SEE TE CONNECTIVITY PRODUCT SPECIFICATION 108-2375 FOR TEST SEQUENCES.
- 3 ROWS GA THRU GJ (SHOWN DARKENED) ARE TYPICALLY USED AS GROUNDS.
- 4 SPECIFIED POSITIONAL TOLERANCE DEFINES HOLE TO HOLE LOCATION WITHIN HOLE PATTERN. POSITIONAL TOLERANCE OF HOLE PATTERN TO FIDUCIAL MARKS OR PCB DATUMS SHALL BE DEFINED BY CUSTOMER.
- 5 AREA RESERVED FOR TE CONNECTIVITY LOGO.
- 6 AREA RESERVED FOR PART NUMBER (X-XXXXXX-X) AND DATE CODE (YYWW).
- 7 USE CENTERLINES INDICATED ON PCB HOLE PATTERN TO ESTABLISH ALIGNMENT BETWEEN HEADER AND RECEPTACLE BOARDS.
- 8 PLATED THROUGH HOLE REQUIREMENTS - SIGNAL:  
HOLE SIZE PRIOR TO PLATING =  $\varnothing 0.420 \pm 0.013$   
COPPER PLATING THICKNESS =  $0.038 \pm 0.013$   
CALCULATED FINISHED HOLE SIZE =  $\varnothing 0.344 \pm 0.039$   
THESE DIMENSIONS APPLY TO THE TOP 1.25mm OF THE PCB THICKNESS FROM THE CONNECTOR MOUNTING SIDE.
- 9 PLATED THROUGH HOLE REQUIREMENTS - POWER:  
HOLE SIZE PRIOR TO PLATING =  $\varnothing 0.700 \pm 0.025$   
COPPER PLATING THICKNESS =  $0.038 \pm 0.013$   
CALCULATED FINISHED HOLE SIZE =  $\varnothing 0.624 \pm 0.051$   
THESE DIMENSIONS APPLY TO THE TOP 1.50mm OF THE PCB THICKNESS FROM THE CONNECTOR MOUNTING SIDE.



**SIZE 2 HOUSING \***  
**56 DIFFERENTIAL PAIRS**  
**184 TOTAL SIGNAL CONTACTS**  
**6 POWER CONTACTS**

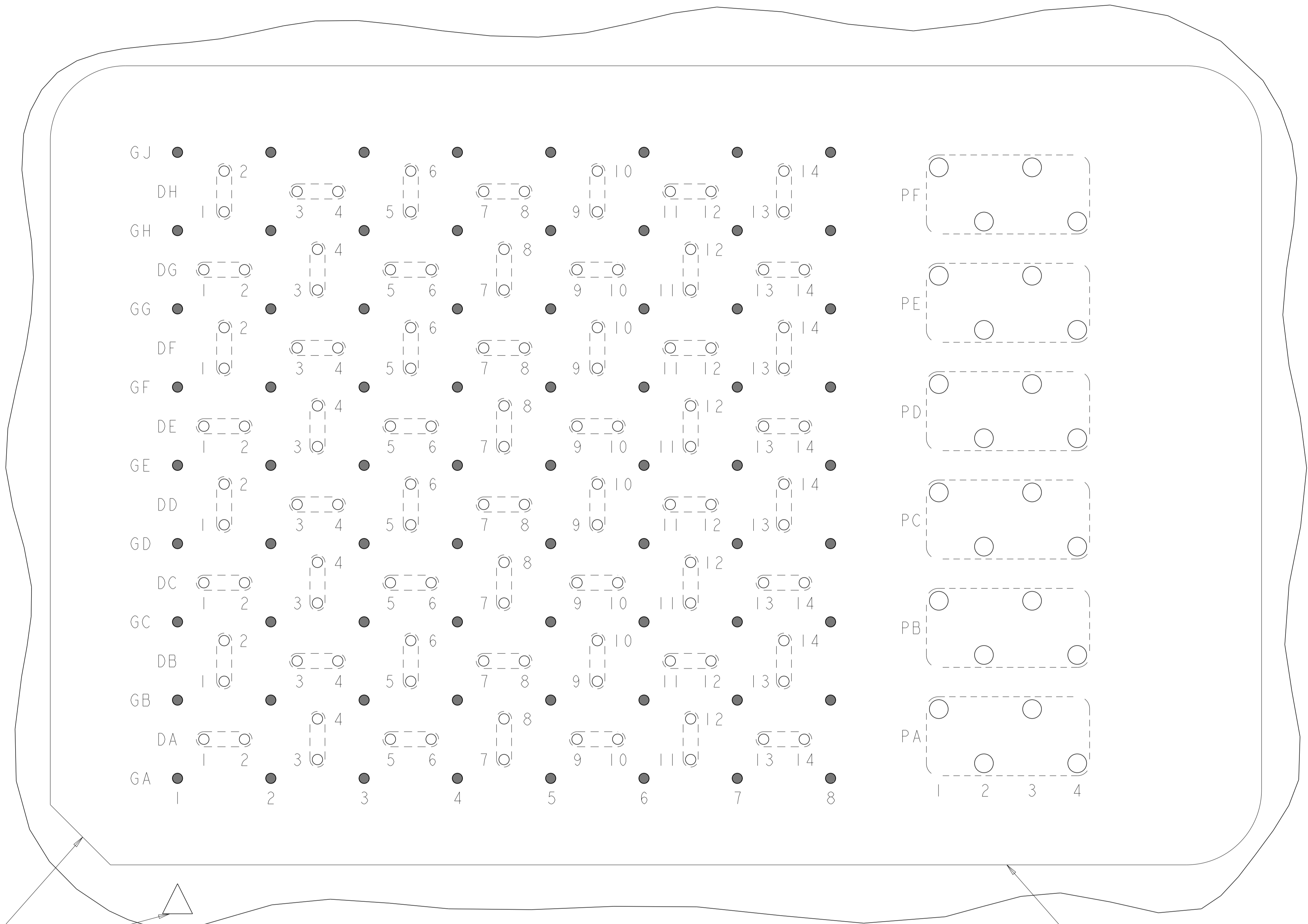
\* SIZE 1 AND SIZE 3 ARE ALSO AVAILABLE

THIS PRODUCT HAS NOT COMPLETED VALIDATION AND QUALIFICATION TESTING


YES	MATTE Sn	5-2057461-1
OBSOLETE	Sn/Pb	2057461-1
TOOLED	CONTACT TAIL PLATING	PART NUMBER
<b>STE</b> TE Connectivity		
DIMENSIONS: 0 PLC ±, 1 PLC ±.13, 2 PLC ±.013, 3 PLC ±.013, 4 PLC ±.013, ANGLES ±.1, FINISH TOLERANCES UNLESS OTHERWISE SPECIFIED:		NAME: RECEPTACLE ASSEMBLY PRODUCT SPEC: 56/184/6P APPLICATION SPEC: STRADA MESA MEZZANINE CONNECTOR SIZE: A1 CAGE CODE: 00779 DRAWING NO: C=2057461 RESTRICTED TO:
MATERIAL:		WEIGHT: -
CUSTOMER DRAWING		SCALE: 3:1 SHEET 1 OF 3 REV A

THIS DRAWING IS A CONTROLLED DOCUMENT.		OWN: D. RINGLER 04SEP2008
DIMENSIONS: mm		CHK: D. TROUT 04SEP2008
TOLERANCES UNLESS OTHERWISE SPECIFIED:		APVD: J. FEEDER 04SEP2008
MATERIAL:		NAME: RECEPTACLE ASSEMBLY
CUSTOMER DRAWING		PRODUCT SPEC: 56/184/6P
		APPLICATION SPEC: STRADA MESA MEZZANINE CONNECTOR
		SIZE: A1
		CAGE CODE: 00779
		DRAWING NO: C=2057461
		RESTRICTED TO:
		WEIGHT: -
		SCALE: 3:1
		SHEET 1 OF 3
		REV A


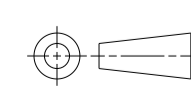
LOC	DIST	REVISIONS					
		P	LTN	DESCRIPTION	DATE	DWN	APVD
GP	00	-	-	SEE SHEET 1	-	-	-



A1 CORNER INDICATORS.

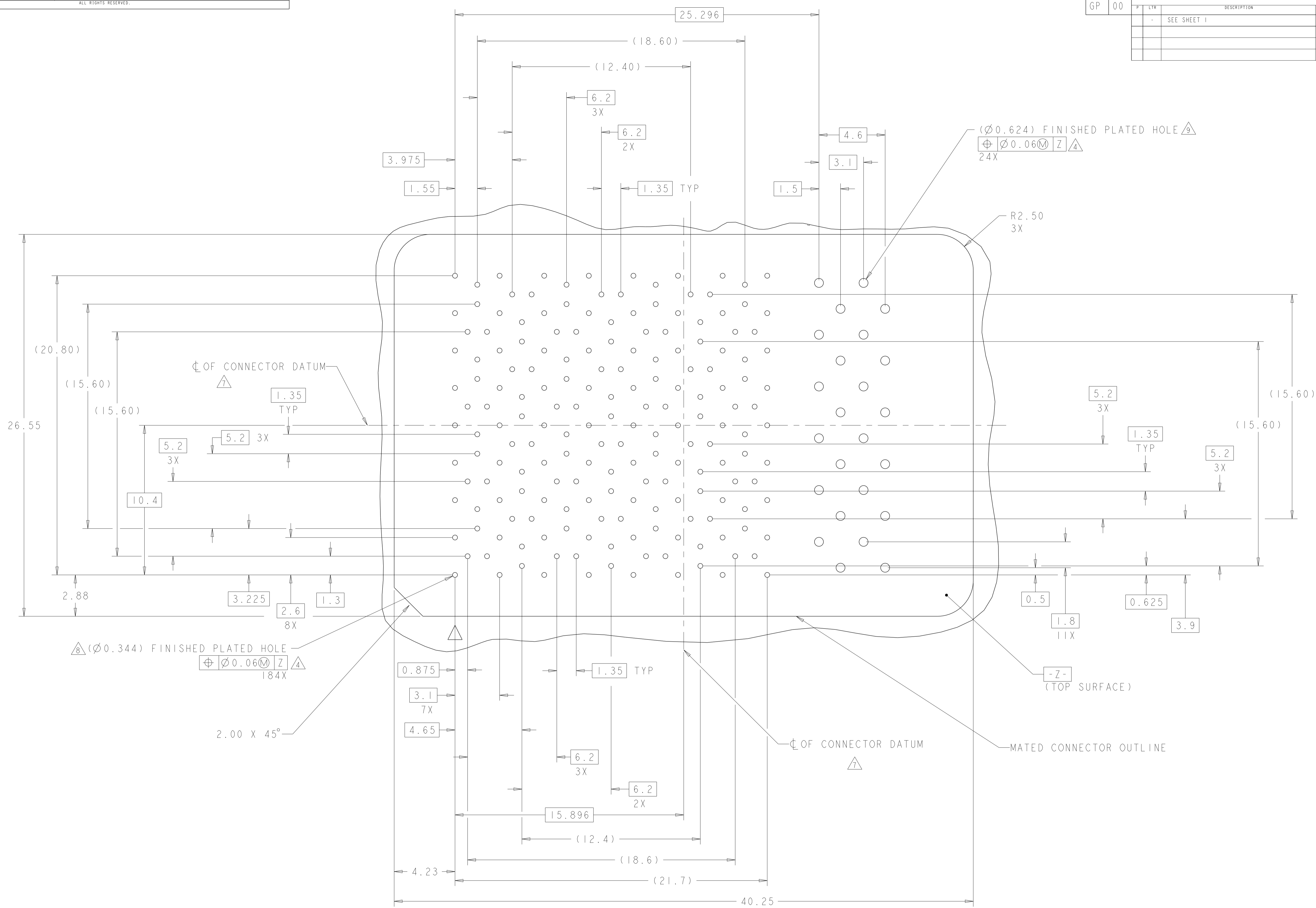
**PCB LAYOUT AND PIN IDENTIFICATION**   
 SHOWN FROM CONNECTOR SIDE  
 SCALE 12:1

MATED CONNECTOR OUTLINE  
 SEE SHEET 3 FOR LOCATION TO HOLES

THIS DRAWING IS A CONTROLLED DOCUMENT.		DWN D. RINGLER 04SEP2008	 TE Connectivity
DIMENSIONS:		CHK D. TROUT 04SEP2008	
mm	TOLERANCES UNLESS OTHERWISE SPECIFIED:	APVD J. FEDDER 04SEP2008	NAME RECEPTACLE ASSEMBLY
	0 PLC ± 1 PLC ± 2 PLC ±0.13 3 PLC ±0.013 4 PLC ± ANGLES ± FINISH ±#1	PRODUCT SPEC 108-2375	56/184/6P STRADA MESA MEZZANINE CONNECTOR
MATERIAL	WEIGHT	APPLICATION SPEC 114-13249	SIZE A1
		CAGE CODE 100779	DRAWING NO 2057461
	CUSTOMER DRAWING	SCALE 3:1	SHEET 2 OF 3
			REV A

LOC	DIST	REV	DATE	BY	APPV
GP	00				

REVISIONS			
REV	DATE	BY	APPV
-	-	-	-
-	-	-	-



**PCB HOLE PATTERN**  
 SHOWN FROM CONNECTOR SIDE  
 SCALE 8:1

THIS DRAWING IS A CONTROLLED DOCUMENT.		DWN: D. RINGLER 04SEP2008	 TE Connectivity
DIMENSIONS: mm		CHK: D. TROUT 04SEP2008	
TOLERANCES UNLESS OTHERWISE SPECIFIED:		APPV: J. FEDDER 04SEP2008	
0 PLC ± 1 PLC ± 2 PLC ±0.13 3 PLC ±0.013 4 PLC ± ANGLES ±1		NAME: RECEPTACLE ASSEMBLY 56/184/6P STRADA MESA MEZZANINE CONNECTOR PRODUCT SPEC: 108-2375 APPLICATION SPEC: 114-13249 WEIGHT: - CUSTOMER DRAWING	
MATERIAL FINISH		SIZE: A1	CAGE CODE: 00779 DRAWING NO: 2057461 SCALE: 3:1 SHEET: 3 OF 3 REV: A