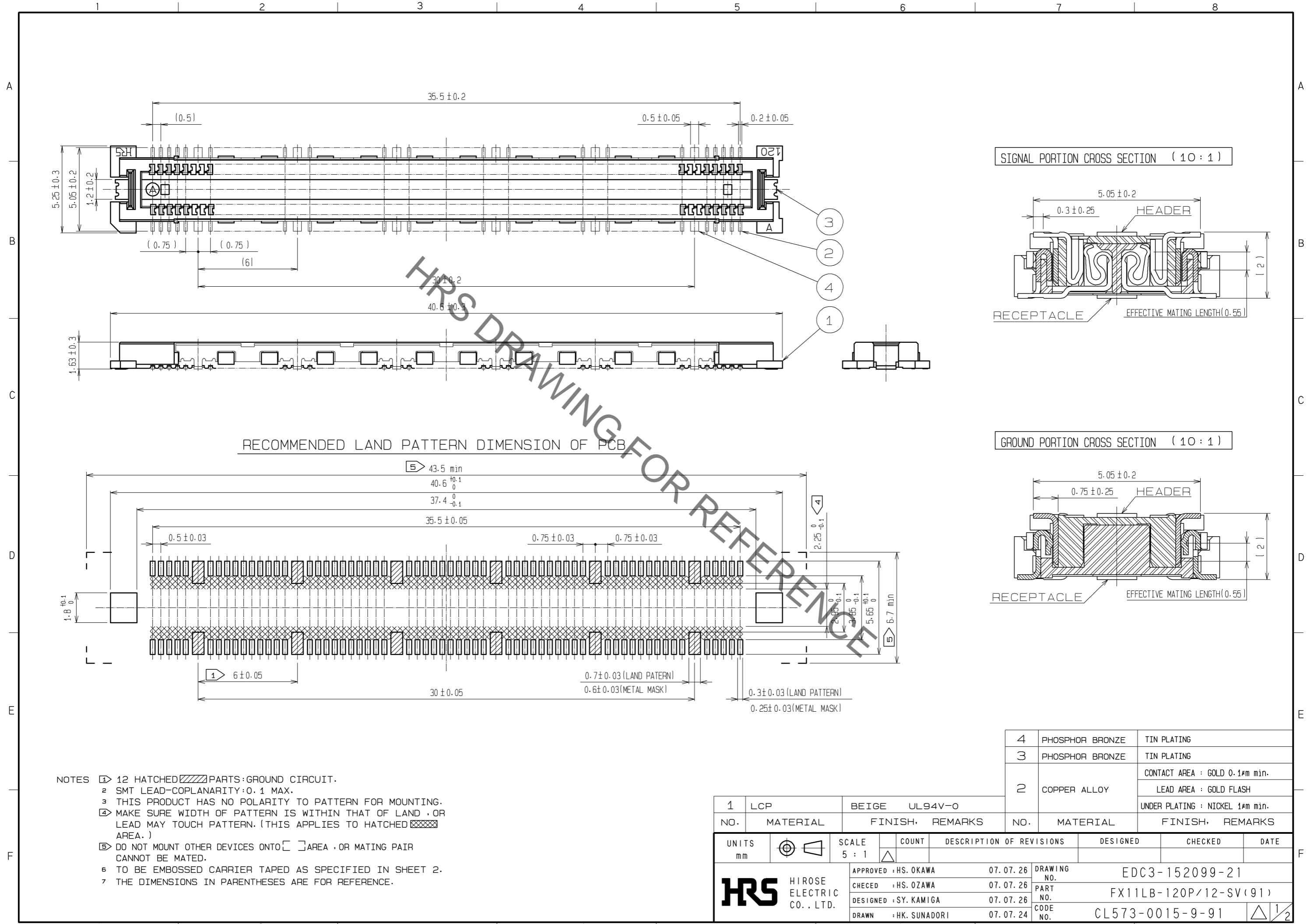


May.1.2023 Copyright 2023 HIROSE ELECTRIC CO., LTD. All Rights Reserved.  
In case of consideration for using Automotive equipment / device which demand high reliability, kindly contact our sales window correspondents.



RECOMMENDED LAND PATTERN DIMENSION OF PCB

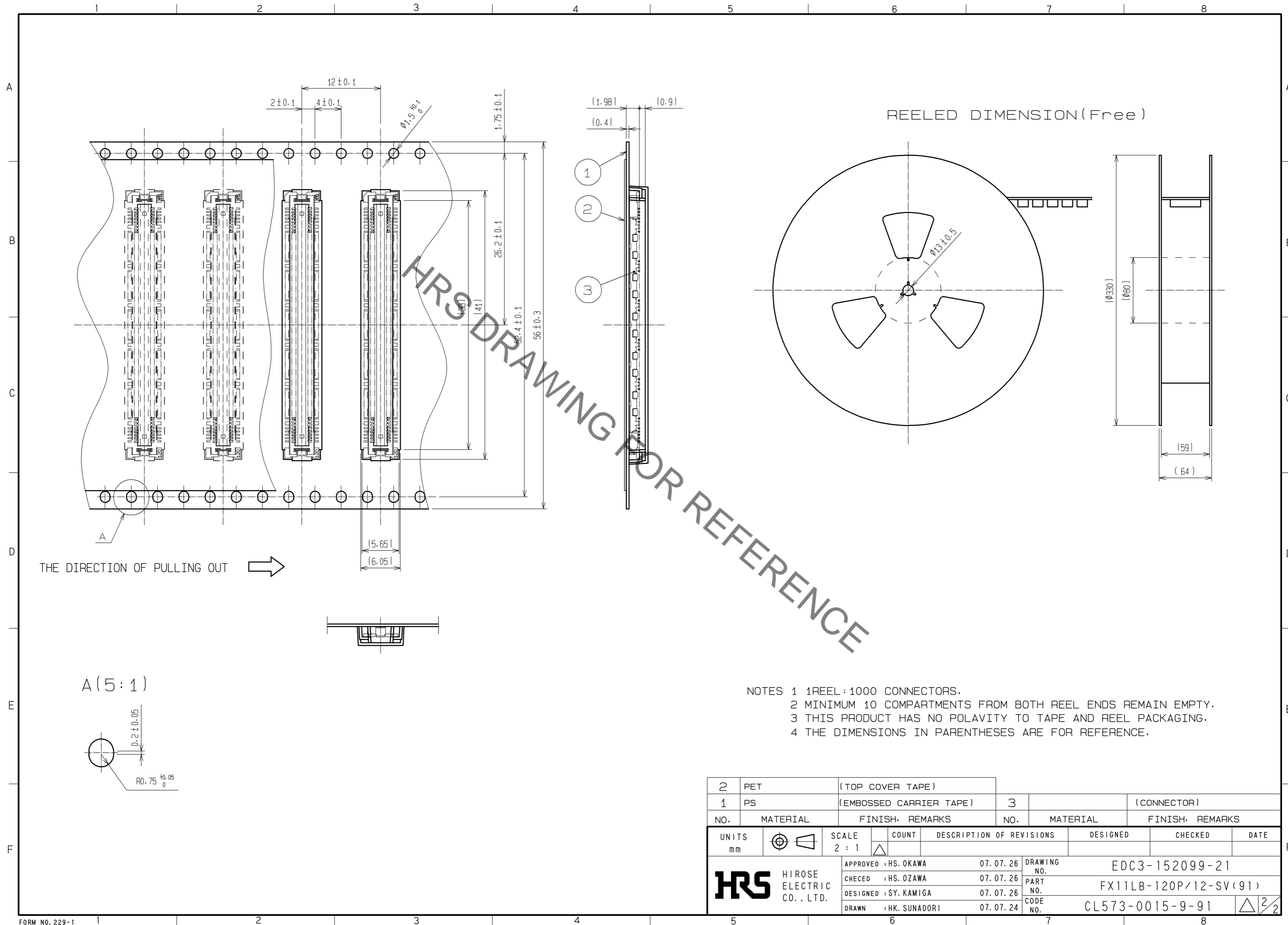
- NOTES
- ① 12 HATCHED PARTS: GROUND CIRCUIT.
  - ② SMT LEAD-COPLANARITY: 0.1 MAX.
  - ③ THIS PRODUCT HAS NO POLARITY TO PATTERN FOR MOUNTING.
  - ④ MAKE SURE WIDTH OF PATTERN IS WITHIN THAT OF LAND, OR LEAD MAY TOUCH PATTERN. (THIS APPLIES TO HATCHED AREA.)
  - ⑤ DO NOT MOUNT OTHER DEVICES ONTO AREA, OR MATING PAIR CANNOT BE MATED.
  - ⑥ TO BE EMBOSSED CARRIER TAPED AS SPECIFIED IN SHEET 2.
  - ⑦ THE DIMENSIONS IN PARENTHESES ARE FOR REFERENCE.

1	LCP	BEIGE	UL94V-0	4	PHOSPHOR BRONZE	TIN PLATING	
NO.	MATERIAL	FINISH	REMARKS	NO.	MATERIAL	FINISH	REMARKS
				2	COPPER ALLOY	CONTACT AREA : GOLD 0.1μm min.	
						LEAD AREA : GOLD FLASH	
						UNDER PLATING : NICKEL 1μm min.	

UNITS	⊕	SCALE	COUNT	DESCRIPTION OF REVISIONS	DESIGNED	CHECKED	DATE
mm		5 : 1	△				
		APPROVED : HS. OKAWA 07.07.26 CHECKED : HS. OZAWA 07.07.26 DESIGNED : SY. KAMIGA 07.07.26 DRAWN : HK. SUNADORI 07.07.24		DRAWING NO. EDC3-152099-21 PART NO. FX11LB-120P/12-SV(91) CODE NO. CL573-0015-9-91			

May.1.2023 Copyright 2023 HIROSE ELECTRIC CO., LTD. All Rights Reserved.  
 In case of consideration for using Automotive equipment / device which demand high reliability, kindly contact our sales window correspondents.



THE DIRECTION OF PULLING OUT →

A (5:1)

- NOTES 1 REEL : 1000 CONNECTORS.  
 2 MINIMUM 10 COMPARTMENTS FROM BOTH REEL ENDS REMAIN EMPTY.  
 3 THIS PRODUCT HAS NO POLAVITY TO TAPE AND REEL PACKAGING.  
 4 THE DIMENSIONS IN PARENTHESES ARE FOR REFERENCE.

2	PET	(TOP COVER TAPE)					
1	PS	(EMBOSSD CARRIER TAPE)	3		(CONNECTOR)		
NO.	MATERIAL	FINISH, REMARKS	NO.	MATERIAL	FINISH, REMARKS		
UNITS	⊕	SCALE	COUNT	DESCRIPTION OF REVISIONS	DESIGNED	CHECKED	DATE
mm		2 : 1	△				
<b>HRS</b>		HIROSE ELECTRIC CO., LTD.	APPROVED : HS. OKAWA	07.07.26	DRAWING NO. EDC3-152099-21		
			CHECED : HS. OZAWA	07.07.26	PART NO. FX11LB-120P/12-SV(91)		
			DESIGNED : SY. KAMIGA	07.07.26	CODE NO. CL573-0015-9-91		
			DRAWN : HK. SUNADORI	07.07.24	△ 2/2		