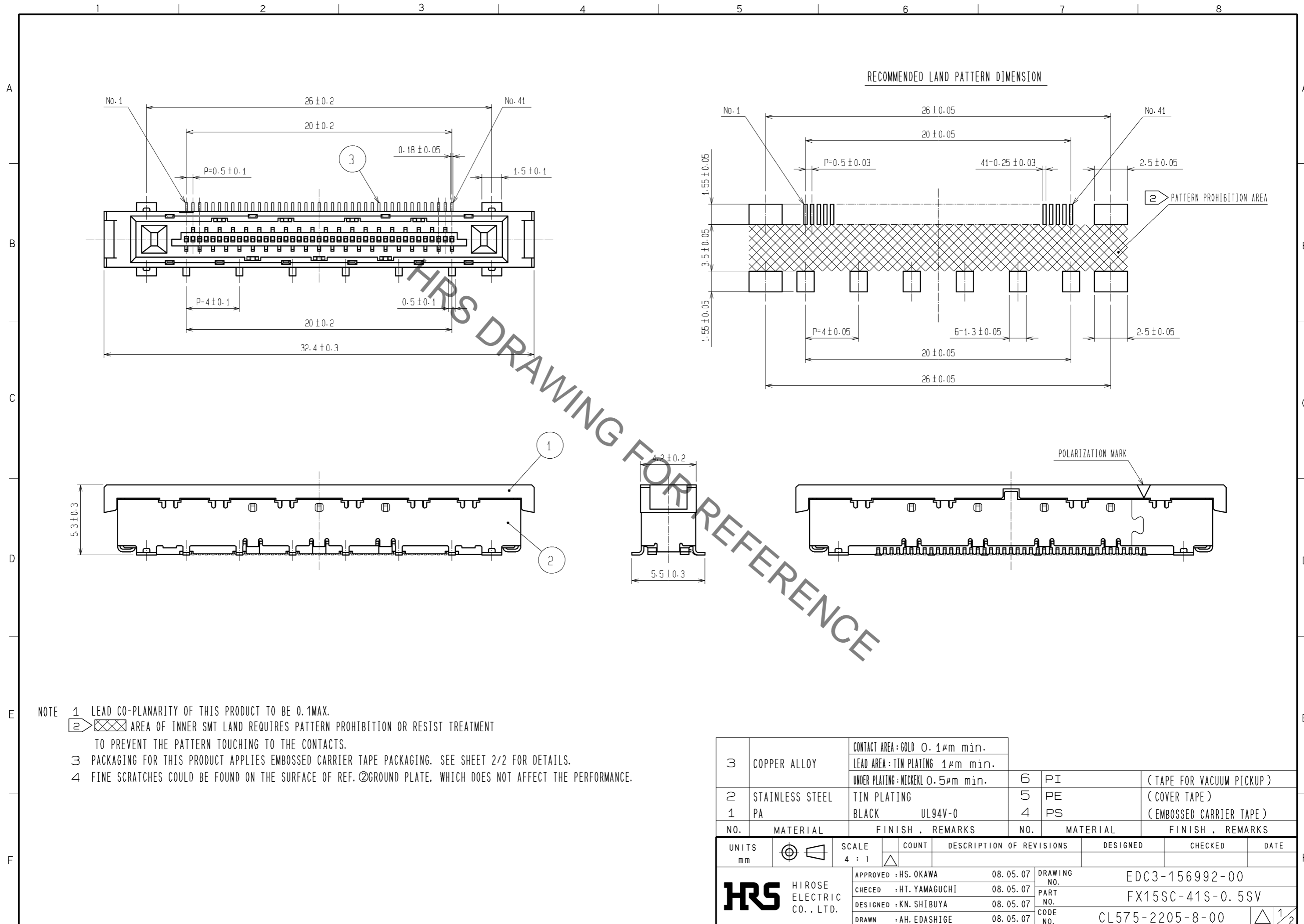


May.1.2023 Copyright 2023 HIROSE ELECTRIC CO., LTD. All Rights Reserved.  
In case of consideration for using Automotive equipment / device which demand high reliability, kindly contact our sales window correspondents.



- NOTE
- 1 LEAD CO-PLANARITY OF THIS PRODUCT TO BE 0.1MAX.
  - 2 AREA OF INNER SMT LAND REQUIRES PATTERN PROHIBITION OR RESIST TREATMENT TO PREVENT THE PATTERN TOUCHING TO THE CONTACTS.
  - 3 PACKAGING FOR THIS PRODUCT APPLIES EMBOSSED CARRIER TAPE PACKAGING. SEE SHEET 2/2 FOR DETAILS.
  - 4 FINE SCRATCHES COULD BE FOUND ON THE SURFACE OF REF. ②GROUND PLATE, WHICH DOES NOT AFFECT THE PERFORMANCE.

3	COPPER ALLOY	CONTACT AREA: GOLD 0.1μm min.	6	PI	(TAPE FOR VACUUM PICKUP)
		LEAD AREA: TIN PLATING 1μm min.	5	PE	(COVER TAPE)
2	STAINLESS STEEL	TIN PLATING	4	PS	(EMBOSSED CARRIER TAPE)
1	PA	BLACK UL94V-0			
NO.	MATERIAL	FINISH . REMARKS	NO.	MATERIAL	FINISH . REMARKS
UNITS		SCALE	COUNT	DESCRIPTION OF REVISIONS	
mm		4 : 1		DESIGNED	CHECKED
<b>HRS</b> HIROSE ELECTRIC CO., LTD.		APPROVED : HS. OKAWA	08.05.07	DRAWING NO. EDC3-156992-00	
		CHECKED : HT. YAMAGUCHI	08.05.07	PART NO. FX15SC-41S-0.5SV	
		DESIGNED : KN. SHIBUYA	08.05.07	CODE NO. CL575-2205-8-00	
		DRAWN : AH. EDASHIGE	08.05.07	1/2	

