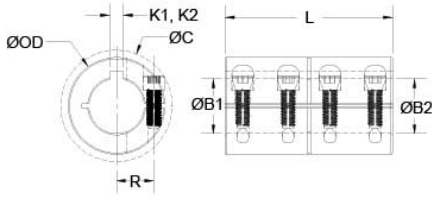




MCLC-16-16-SS

Ruland MCLC-16-16-SS, 16mm x 16mm Rigid Coupling, 303 Stainless Steel, One-Piece Clamp Style with Keyway, 34mm OD, 50mm Length




Description

Ruland MCLC-16-16-SS is a one-piece rigid coupling with 16mm x 16mm bores, 34mm OD, 50mm length, and 5mm x 5mm keyways. It has precision honed bores to ensure they are collinear and do not introduce misalignment or vibration into the system making it suitable for high precision servo applications as well as shaft to shaft connections. Proprietary Nypatch® anti-vibration coating on hardware allows for even seating of the screw, repeated screw installations, prevents galling, and maintains high holding power. It eliminates the need to treat screws upon receipt greatly reducing installation time. Forged screws test beyond DIN 912 12.9 standards to ensure maximum holding power. Tightly controlled bore tolerance of +.050mm/+0.012mm is maintained. MCLC-16-16-SS is made from 303 stainless steel with hardware of like material for consistent corrosion resistance. It is machined from solid bar stock that is sourced exclusively from North American mills and is RoHS3 and REACH compliant. MCLC-16-16-SS is manufactured in our Marlborough, MA factory under strict controls using proprietary processes.

Product Specifications

Bore (B1)	16 mm	Small Bore (B2)	16 mm
Keyway (K1)	5 mm	Keyway (K2)	5 mm
B1 Max Shaft Penetration	25.0 mm	B2 Max Shaft Penetration	25.0 mm
Outer Diameter (OD)	34 mm	Bore Tolerance	+0.050 mm / +0.012 mm
Length (L)	50 mm	Clearance Diameter (C) MAX	39.4 mm
Recommended Shaft Tolerance	+0.000 mm / -0.013 mm	Forged Clamp Screw	M5
Screw Material	18-8 300 Series Stainless Steel with Nypatch®	Hex Wrench Size	4.0 mm
Screw Finish	Bright	Seating Torque	5.4 Nm
Screw Location (R)	12.0 mm	Number of Screws	4 ea
Rated Torque	60 Nm	Moment of Inertia	4.655 x 10 ⁻⁵ kg-m ²
Maximum Speed	4,000 RPM	Full Bearing Support Required?	No
Nypatch® Anti-Vibration Hardware?	Yes	Precision Honed Bores?	Yes
Zero-Backlash?	Yes	Material Specification	Type 303 Austenitic, Non-Magnetic Bar
Temperature	-40°F to 350°F (-40°C to 176°C)	Finish Specification	Bright, No Plating
Manufacturer	Ruland Manufacturing	Country of Origin	USA
Weight (lbs)	0.549600	UPC	634529013052
Tariff Code	8483.60.8000	UNSPC	31163009

Note 1 Performance ratings are for guidance only. The user must determine suitability for a particular application.

Prop 65  **WARNING** This product can expose you to the chemical Nickel (metallic), known to the State of California to cause cancer. For more information go to www.P65Warnings.ca.gov.

Installation Instructions

1. Align the MCLC-16-16-SS one-piece rigid coupling on the two shafts to be connected. There should be no misalignment.
2. Tighten the Nypatch® screws in two stages, starting with the inside screws. Using a 4.0 mm torque wrench, tighten the inside screws to 2.7 Nm which is half the recommended seating torque. Repeat for the outside screws, again tightening to half of the recommended seating torque.
3. Tighten the screws to the full recommended seating torque of 5.4 Nm following the same pattern, starting with the inside screws first.

