

Split-Core AC Current Sensor SCT-1250

1.25" Opening With Ratings Up To 800 Amps

Description:

Magnelab's SCT-1250 Series split-core current sensors "sense" AC current up to 800 Amps passing through the center conductor. Split-core transformers are ideal for installation on existing electrical wiring by snapping around the conductor. The SCT series have a self-locking mechanism. Custom outputs and other parameters available at customer request.

Features:

- Inputs: Rated up to 800 Amps
- Outputs: of 0.333 Volt at rated current
- Linearity accuracy $\pm 1\%$
- Accuracy at 10% to 130% of rated current
- Phase angle < 2 degrees measured at rated current

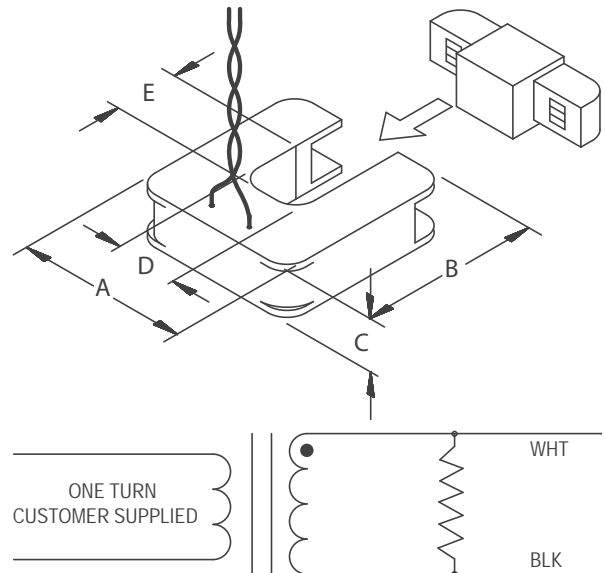
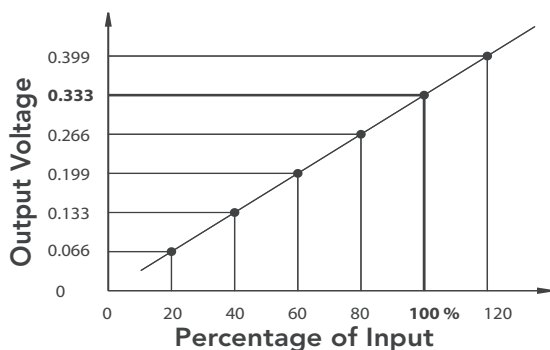


- Operates from 50 Hz to 400 Hz
- 8 ft. twisted-pair lead, 22 AWG
- Maximum Voltage: 600 V (on bare conductor)
- UL Standard 61010-1, EN 60044-1
- Operating temperature: -20°C to $+75^{\circ}\text{C}$
- Storage temperature: -40°C to $+90^{\circ}\text{C}$

PART NUMBER AND RATING	
SCT-1250-000	No Burden Resistor*
SCT-1250-070	70 Amp
SCT-1250-100	100 Amp
SCT-1250-150	150 Amp
SCT-1250-200	200 Amp
SCT-1250-250	250 Amp
SCT-1250-300	300 Amp
SCT-1250-400	400 Amp
SCT-1250-600	600 Amp
SCT-1250-800	800 Amp

* Zener diode limits the output voltage to 22 V

DIMENSION	INCH	MM
A	3.250	82.55
B	3.350	85.09
C	1.000	25.40
D	1.250	31.75
E	1.250	31.75



Magnelab reserves the right to modify products to make improvements without advance notice.