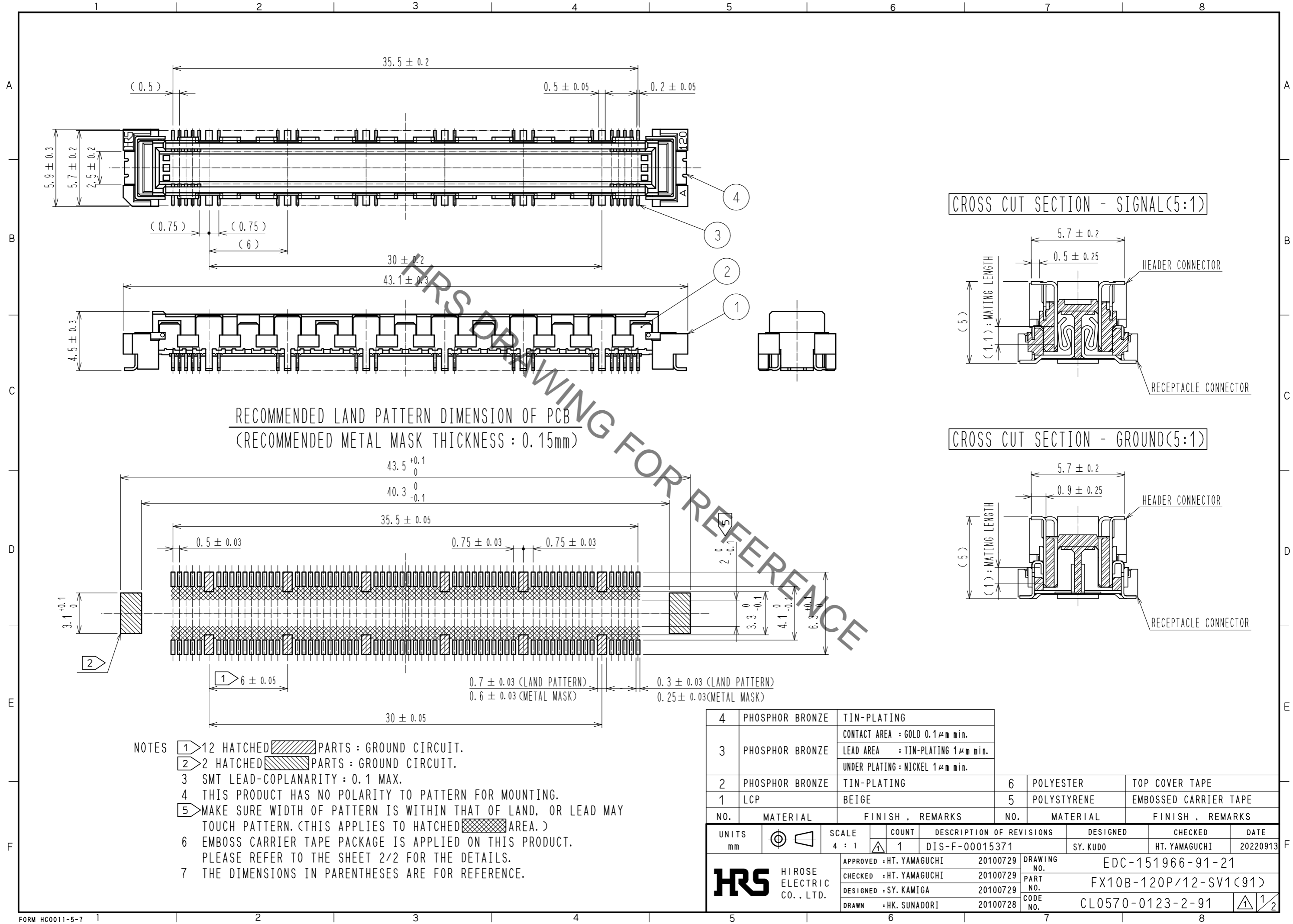


May.1.2023 Copyright 2023 HIROSE ELECTRIC CO., LTD. All Rights Reserved.
 In case of consideration for using Automotive equipment / device which demand high reliability, kindly contact our sales window correspondents.



RECOMMENDED LAND PATTERN DIMENSION OF PCB
 (RECOMMENDED METAL MASK THICKNESS : 0.15mm)

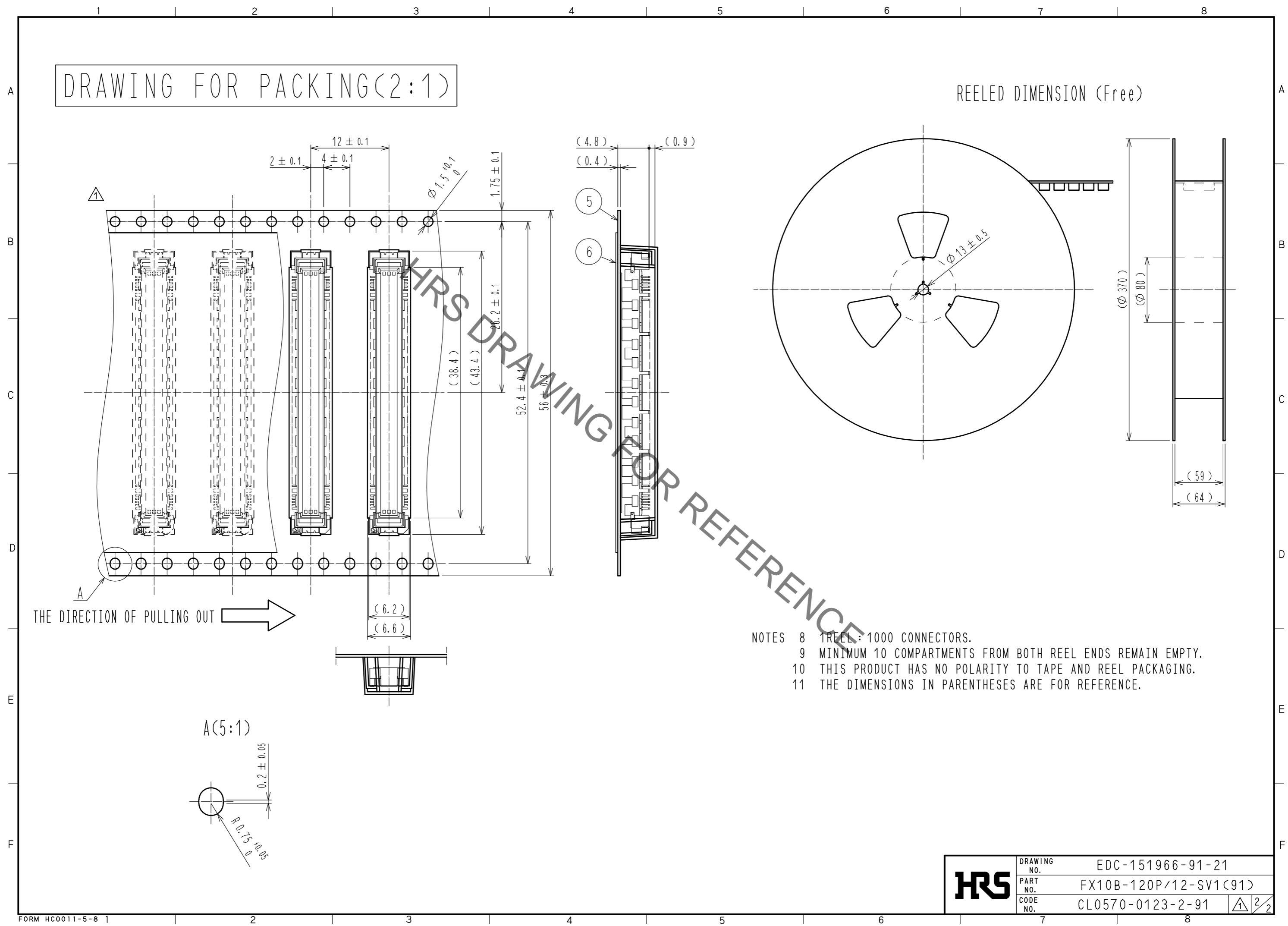
- NOTES
- 1 12 HATCHED PARTS : GROUND CIRCUIT.
 - 2 2 HATCHED PARTS : GROUND CIRCUIT.
 - 3 SMT LEAD-COPLANARITY : 0.1 MAX.
 - 4 THIS PRODUCT HAS NO POLARITY TO PATTERN FOR MOUNTING.
 - 5 MAKE SURE WIDTH OF PATTERN IS WITHIN THAT OF LAND, OR LEAD MAY TOUCH PATTERN. (THIS APPLIES TO HATCHED AREA.)
 - 6 EMBOSS CARRIER TAPE PACKAGE IS APPLIED ON THIS PRODUCT. PLEASE REFER TO THE SHEET 2/2 FOR THE DETAILS.
 - 7 THE DIMENSIONS IN PARENTHESES ARE FOR REFERENCE.

4	PHOSPHOR BRONZE	TIN-PLATING			
		CONTACT AREA : GOLD 0.1μm min.			
3	PHOSPHOR BRONZE	LEAD AREA : TIN-PLATING 1μm min.			
		UNDER PLATING : NICKEL 1μm min.			
2	PHOSPHOR BRONZE	TIN-PLATING	6	POLYESTER	TOP COVER TAPE
1	LCP	BEIGE	5	POLYSTYRENE	EMBOSSED CARRIER TAPE
NO.	MATERIAL	FINISH . REMARKS	NO.	MATERIAL	FINISH . REMARKS
UNITS	mm	SCALE	4 : 1	COUNT	1
		DESCRIPTION OF REVISIONS	DESIGNED	CHECKED	DATE
		DIS-F-00015371	SY. KUDO	HT. YAMAGUCHI	20220913
APPROVED : HT. YAMAGUCHI		20100729	DRAWING NO. EDC-151966-91-21		
CHECKED : HT. YAMAGUCHI		20100729	PART NO. FX10B-120P/12-SV1(91)		
DESIGNED : SY. KAMIGA		20100729	CODE NO. CL0570-0123-2-91		
DRAWN : HK. SUNADORI		20100728			

May.1.2023 Copyright 2023 HIROSE ELECTRIC CO., LTD. All Rights Reserved.
 In case of consideration for using Automotive equipment / device which demand high reliability, kindly contact our sales window correspondents.

DRAWING FOR PACKING(2:1)

REELED DIMENSION (Free)



- NOTES
- 8 1 REEL : 1000 CONNECTORS.
 - 9 MINIMUM 10 COMPARTMENTS FROM BOTH REEL ENDS REMAIN EMPTY.
 - 10 THIS PRODUCT HAS NO POLARITY TO TAPE AND REEL PACKAGING.
 - 11 THE DIMENSIONS IN PARENTHESES ARE FOR REFERENCE.

HRS	DRAWING NO.	EDC-151966-91-21	
	PART NO.	FX10B-120P/12-SV1(91)	
	CODE NO.	CL0570-0123-2-91	