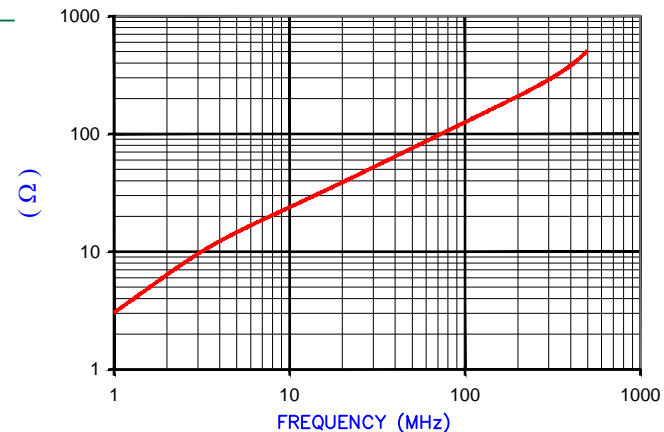
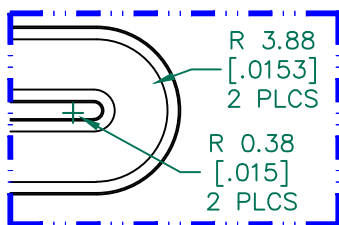


IMPEDANCE ( Z )			
Frequency	25 MHz	100 MHz	300 MHz
Nominal (REF)	48 Ω	130 Ω	290 Ω
Minimum	- Ω	104 Ω	- Ω

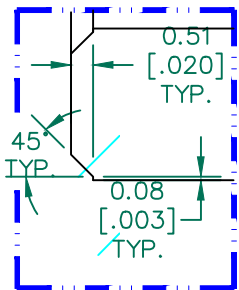
Z vs. FREQUENCY  
(REF. ONLY)



AGILENT E4991A Impedance/Material Analyzer  
HP 16092A-Test Fixture TEST REF. 2975



DETAIL A  
SCALE 3:1



DETAIL B  
SCALE 6:1

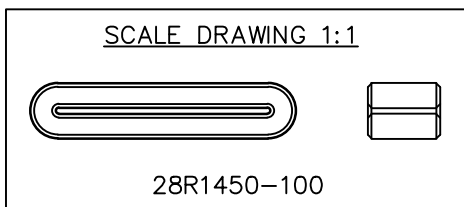
FERRITE CORE DIMENSIONS (SPEC): mm [in]

A	36.83 [1.450]	+ 0.66 [.026]
B	29.58 [1.165]	+ 0.51 [.020]
C	10.00 [.394]	+ 0.30 [.012]
D	7.75 [.305]	+ 0.51 [.020]
E	0.75 [.030]	+ 0.25 [.010]

WEIGHT/1000 12.15 kgs [26.78 Lbs]

NOTES: UNLESS OTHERWISE SPECIFIED

1. COSMETIC SPECIFICATION REFER TO WI-QA-038.



DIMENSIONS ARE IN mm[INCHES].				This print is the property of Laird Tech. and is loaned in confidence subject to return upon request and with the understanding that no copies shall be made without the written consent of Laird Tech. All rights to design or invention are reserved.			
REV	DESCRIPTION	DATE	INT				
E	UPDATE COMPANY LOGO	06/19/15	QIU	PROJECT/PART NUMBER: <b>28R1450-100</b> DATE: 08/12/02 SCALE: 2 : 1 MATERIAL: FERRITE CAD # 28R1450-100-E TOOL # R1450			
D	UPDATE Z SPECS & COMPANY LOGO	07/27/07	JRK				
C	UPDATE Z SPECS & ADD TEST REF#	08/19/05	TMB				
B	UPDATE PRINT FORMAT CHANGE CURVE FORMAT ADD IMPEDANCE (Z) VALUES TO UPPER RIGHT CORNER OF PRINT	03/11/03	TMB				
A	ORIGINAL DRAFT	08/12/02	TMB				
REV	DESCRIPTION	DATE	INT	DATE	SCALE	MATERIAL	REV: E DRAWN BY: TMB