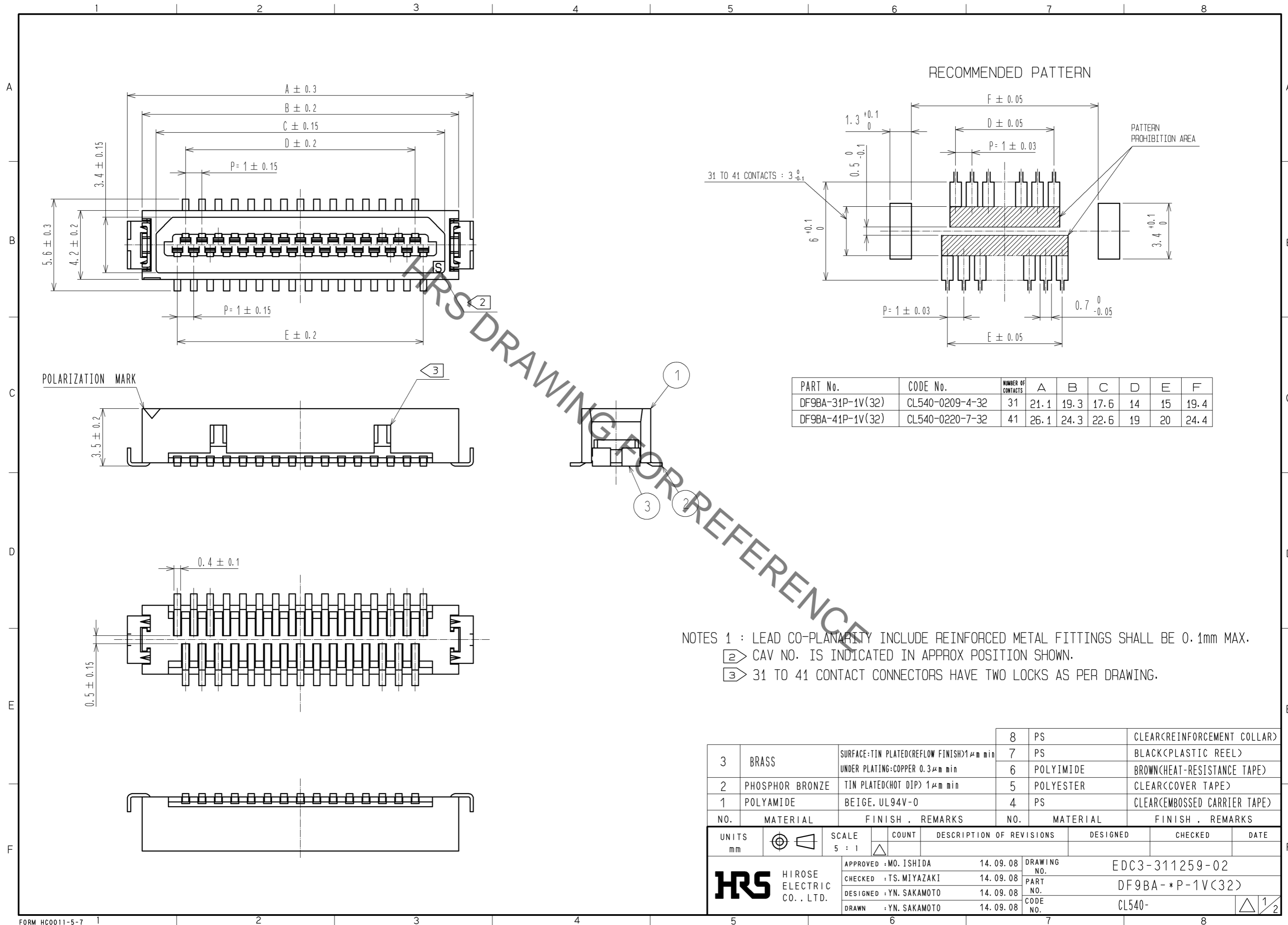


May.1.2023 Copyright 2023 HIROSE ELECTRIC CO., LTD. All Rights Reserved.
 In case of consideration for using Automotive equipment / device which demand high reliability, kindly contact our sales window correspondents.



PART No.	CODE No.	NUMBER OF CONTACTS	A	B	C	D	E	F
DF9BA-31P-1V(32)	CL540-0209-4-32	31	21.1	19.3	17.6	14	15	19.4
DF9BA-41P-1V(32)	CL540-0220-7-32	41	26.1	24.3	22.6	19	20	24.4

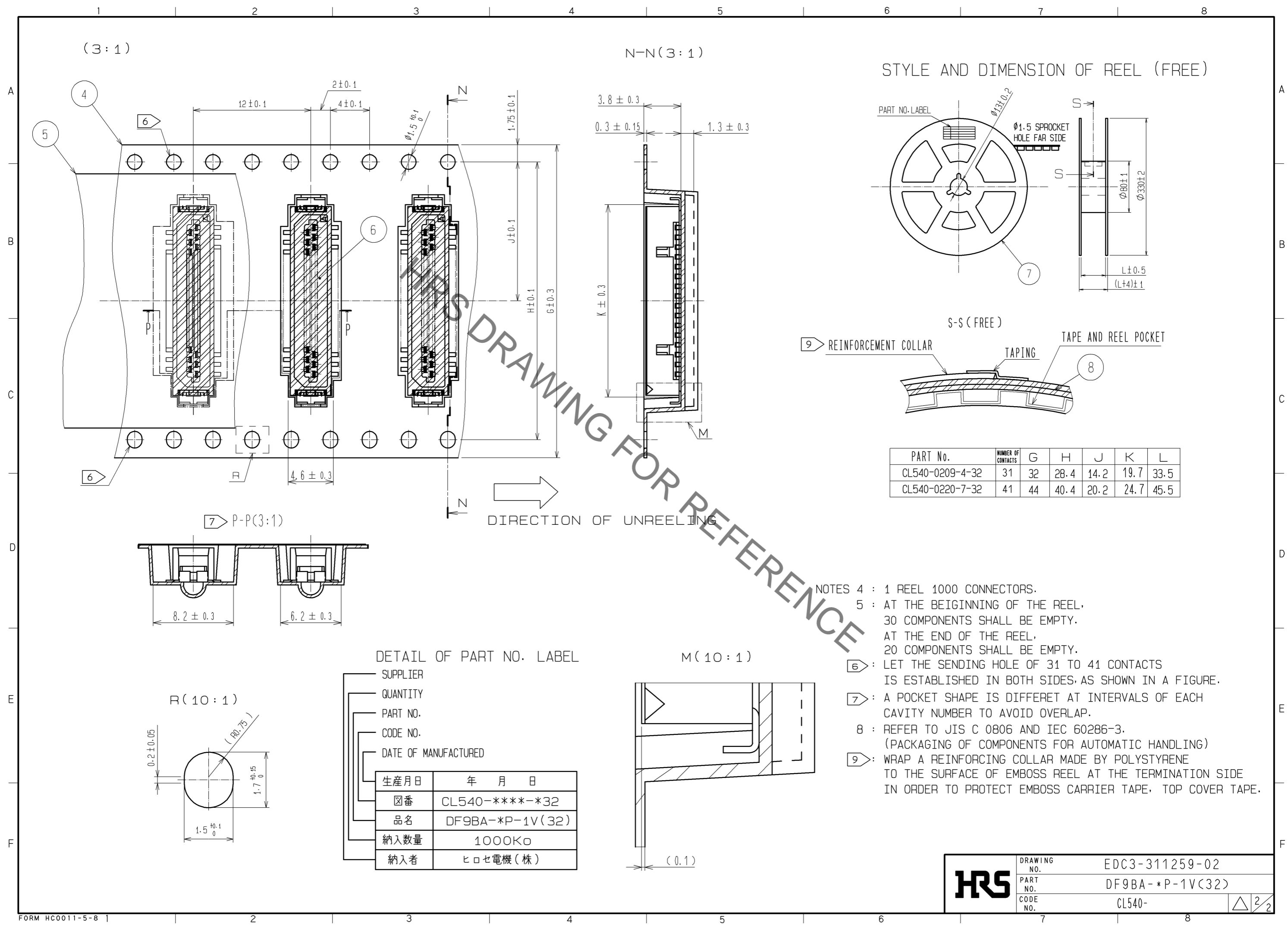
NOTES 1 : LEAD CO-PLANARITY INCLUDE REINFORCED METAL FITTINGS SHALL BE 0.1mm MAX.
 2 CAV. NO. IS INDICATED IN APPROX POSITION SHOWN.
 3 31 TO 41 CONTACT CONNECTORS HAVE TWO LOCKS AS PER DRAWING.

NO.	MATERIAL	FINISH . REMARKS	NO.	MATERIAL	FINISH . REMARKS
3	BRASS	SURFACE:TIN PLATED(REFLOW FINISH)1 μ m min UNDER PLATING:COPPER 0.3 μ m min	8	PS	CLEAR(REINFORCEMENT COLLAR)
2	PHOSPHOR BRONZE	TIN PLATED(HOT DIP) 1 μ m min	7	PS	BLACK(PLASTIC REEL)
1	POLYAMIDE	BEIGE, UL94V-0	6	POLYIMIDE	BROWN(HEAT-RESISTANCE TAPE)
			5	POLYESTER	CLEAR(COVER TAPE)
			4	PS	CLEAR(EMBOSSED CARRIER TAPE)

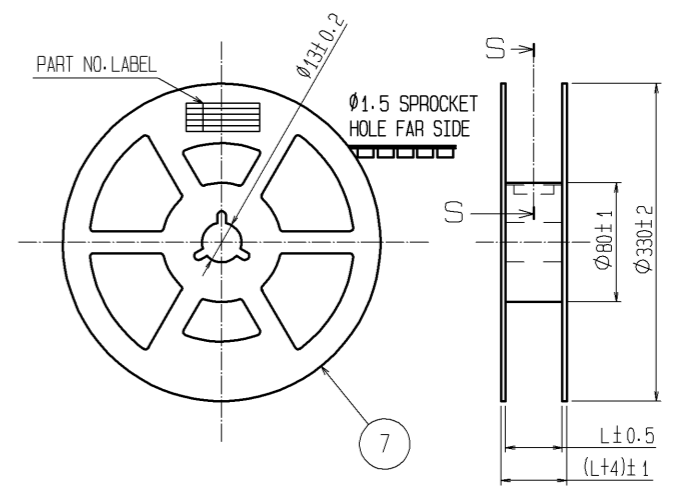
UNITS	SCALE	COUNT	DESCRIPTION OF REVISIONS	DESIGNED	CHECKED	DATE
mm	5 : 1	△	APPROVED : MO. ISHIDA 14.09.08 CHECKED : TS. MIYAZAKI 14.09.08 DESIGNED : YN. SAKAMOTO 14.09.08 DRAWN : YN. SAKAMOTO 14.09.08			

DRAWING NO.	PART NO.	CODE NO.
EDC3-311259-02	DF9BA-*P-1V(32)	CL540-

May.1.2023 Copyright 2023 HIROSE ELECTRIC CO., LTD. All Rights Reserved.
In case of consideration for using Automotive equipment / device which demand high reliability, kindly contact our sales window correspondents.



STYLE AND DIMENSION OF REEL (FREE)



PART No.	NUMBER OF CONTACTS	G	H	J	K	L
CL540-0209-4-32	31	32	28.4	14.2	19.7	33.5
CL540-0220-7-32	41	44	40.4	20.2	24.7	45.5

- NOTES 4 : 1 REEL 1000 CONNECTORS.
 5 : AT THE BEGINNING OF THE REEL, 30 COMPONENTS SHALL BE EMPTY. AT THE END OF THE REEL, 20 COMPONENTS SHALL BE EMPTY.
 6 : LET THE SENDING HOLE OF 31 TO 41 CONTACTS IS ESTABLISHED IN BOTH SIDES, AS SHOWN IN A FIGURE.
 7 : A POCKET SHAPE IS DIFFERET AT INTERVALS OF EACH CAVITY NUMBER TO AVOID OVERLAP.
 8 : REFER TO JIS C 0806 AND IEC 60286-3. (PACKAGING OF COMPONENTS FOR AUTOMATIC HANDLING)
 9 : WRAP A REINFORCING COLLAR MADE BY POLYSTYRENE TO THE SURFACE OF EMBOSS REEL AT THE TERMINATION SIDE IN ORDER TO PROTECT EMBOSS CARRIER TAPE, TOP COVER TAPE.

DETAIL OF PART NO. LABEL

SUPPLIER

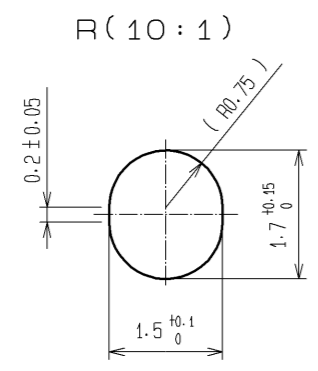
QUANTITY

PART NO.

CODE NO.

DATE OF MANUFACTURED

生産月日	年 月 日
☒番	CL540-****-*32
品名	DF9BA-*P-1V(32)
納入数量	1000K□
納入者	ヒロセ電機(株)



HRS	DRAWING NO.	EDC3-311259-02
	PART NO.	DF9BA-*P-1V(32)
	CODE NO.	CL540-

△ 2/2