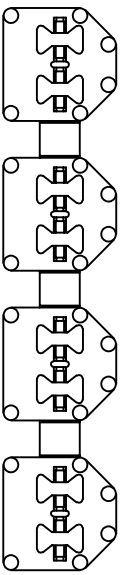
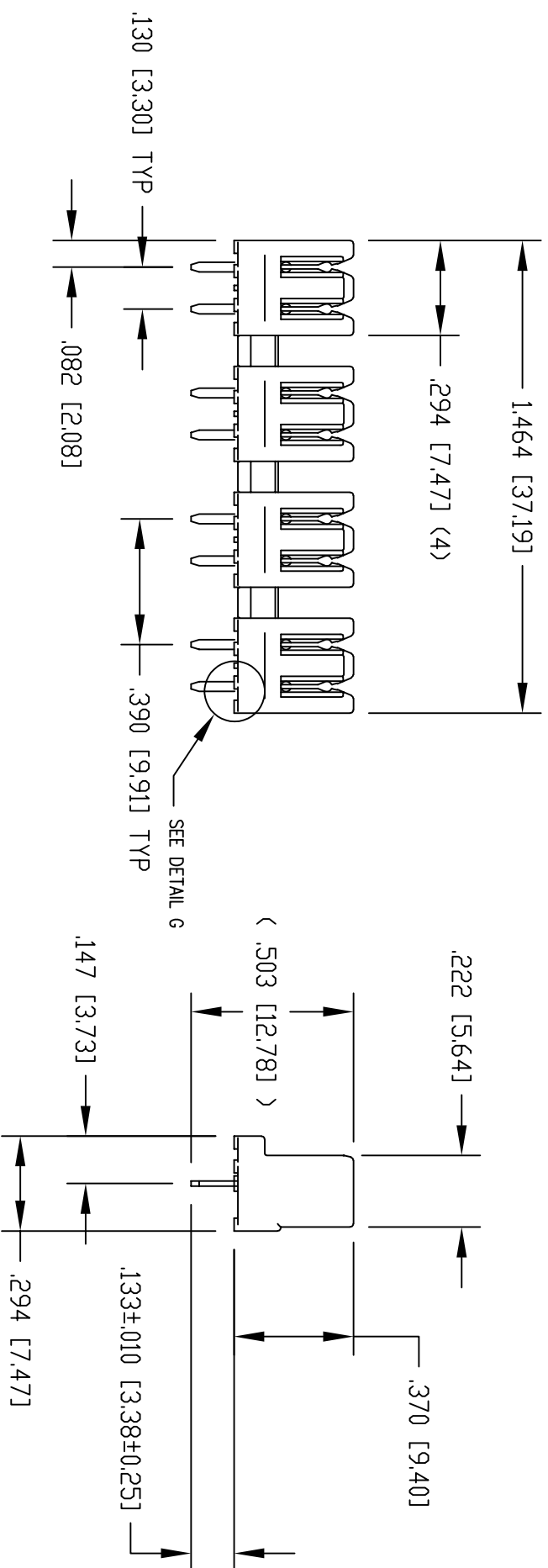


P.C.B. RECOMMENDED HOLE LAYOUT  
SEEN FROM COMPONENT SIDE

ALL CENTERLINE DIMENSIONS ARE BASIC.

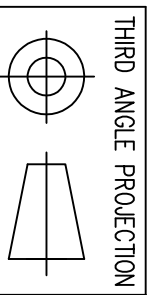


| DATE     | REV | EQN   | APP'D. BY |
|----------|-----|-------|-----------|
| 3-28-16  | A3  | 10635 | TRM       |
| 1-20-17  | A4  | 10869 | TRM       |
| 10-26-22 | A5  | 12063 | JMM       |

NOTES:

- CONNECTOR MATERIALS:  
HOUSING: THERMOPLASTIC UL94 V-0  
CONTACTS: COPPER ALLOY  
CONTACT PLATING: TIN
- DESIGNED FOR CATEGORY 6A APPLICATIONS.
- IDC CONTACTS TERMINATE 22 AWG TO 26 AWG SOLID CONDUCTOR WIRE.
- FOR PRODUCT SPECIFICATION SEE PR031-01

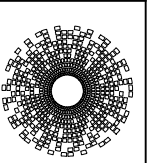
|              |
|--------------|
| SS-51000-003 |
| PART NUMBER  |



DO NOT SCALE DRAWING  
DRAWING IS SUBJECT TO  
CHANGE WITHOUT NOTICE

DIMENSIONS: INCHES [METRIC]  
UNLESS OTHERWISE SPECIFIED  
TOLERANCES ARE  $\pm .005$  [ $0.13$ ]  
ANGLES ARE  $\pm 1^\circ$

SHEET NO. 1 OF 1



TITLE: CATEGORY 6A, 4 PAIR PUNCHDOWN BLOCK

11118 Susquehanna Trail South  
Glen Rock, PA 17327-9199  
(717) 235-7512  
<http://www.stewartconnector.com>

|                  |                |
|------------------|----------------|
| DRN BY: DHG      | DATE: 11-02-06 |
| APPR BY: TRM     | DATE: 11-02-06 |
| DWG NO. CTS10003 | REV. A5        |

