

Insulated cross-connector, No. of poles: 10, Mounting type: Plug in, Width: 60.9 mm, Colour: Black

RAL: 9005

Business data

| | |
|--|---------------------------|
| Article number | 3470.4 |
| Article name | FQI 4/10 BK |
| GTIN (EAN) | 4044211113582 |
| Packaging unit | 10 |
| Quantity unit | PC |
| Weight per piece (not including packaging) | 7.49 g |
| Weight per piece (including packaging) | 7.51 g |
| Unit of weight | G |
| Customs number | 85389099 |
| Country of origin | CZ |
| Prio-Article | 3470.8 |
| Product description | Insulated cross-connector |

Technical data

Dimensions

| | |
|------------|---------|
| Length | 4 mm |
| Width | 60.9 mm |
| Pitch size | 6.1 mm |

Ratings

| | |
|---------------------|-------------------|
| Max. voltage | 800 V |
| Rated current | 32 A |
| Current load, max. | 32 A |
| Rated cross-section | 4 mm ² |

Connection data

| | |
|--------------|----|
| No. of poles | 10 |
|--------------|----|

Materials

| | |
|---------------------------|---------------|
| Material | Copper |
| Surface | Tin-nickel |
| Insulation housing | Polyamide 6.6 |
| Flammability class UL 94 | V-2 |
| Working temperature, min. | -40 °C |
| Working temperature, max. | 105 °C |

Further technical data

| | |
|-------------------------------|---------|
| Mounting type | Plug in |
| Insulation available | ✓ |
| Touch protection is available | ✓ |
| Number of bridged terminals | 10 |

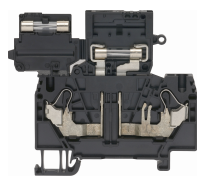
Environmental Product Compliance

| | |
|--------------------------------|------------|
| REACH Conform | yes |
| REACH Reference date | 2022-06-10 |
| REACH Candidate Substance Note | No |
| RoHS Conform | yes |

Media

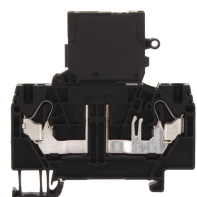
Accessories

##INVERSE##CONTA-CONNECT



Fuse-disconnect terminal, Push-in connection, Mounting type: Mounting rail TS 35/7.5, Rated cross-section: 4 mm², Width: 6 mm, Colour: Black

| Article number | Article name | GTIN (EAN) | Packaging unit |
|----------------|--------------|---------------|----------------|
| <u>3290.4</u> | FSIK 4/2A BK | 4044211180287 | 25 ST |



Fuse-disconnect terminal, Push-in connection, Mounting type: Mounting rail TS 35/7.5, Rated cross-section: 4 mm², Width: 6 mm, Colour: Black

| Article number | Article name | GTIN (EAN) | Packaging unit |
|----------------|-------------------------------|---------------|----------------|
| <u>3291.4</u> | FSIK 4/2A/LED 12-30V AC/DC BK | 4044211188962 | 25 ST |



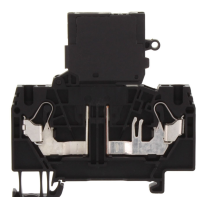
Disconnect-blade terminal, Push-in connection, Mounting type: Mounting rail TS 35/7.5, Rated cross-section: 4 mm², Width: 6.1 mm, Colour: Black

| Article number | Article name | GTIN (EAN) | Packaging unit |
|----------------|-----------------|---------------|----------------|
| <u>3239.4</u> | FSIK 4/2A/MT BK | 4044211209933 | 50 ST |



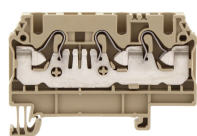
Fuse-disconnect terminal, Push-in connection, Mounting type: Mounting rail TS 35/7.5, Rated cross-section: 4 mm², Width: 6 mm, Colour: Black

| Article number | Article name | GTIN (EAN) | Packaging unit |
|----------------|-------------------------------|---------------|----------------|
| <u>3292.4</u> | FSIK 4/2A/LED 30-60V AC/DC BK | 4044211188979 | 25 ST |



Fuse-disconnect terminal, Push-in connection, Mounting type: Mounting rail TS 35/7.5, Rated cross-section: 4 mm², Width: 6 mm, Colour: Black

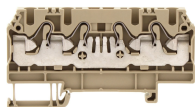
| Article number | Article name | GTIN (EAN) | Packaging unit |
|----------------|---------------------------------|---------------|----------------|
| <u>3293.4</u> | FSIK 4/2A/LED 110-250V AC/DC BK | 4044211188986 | 25 ST |



Feed-through terminal, Push-in connection, Mounting type: Mounting rail TS 35/7.5, Rated cross-section: 4 mm², Width: 6.1 mm, Colour: Beige

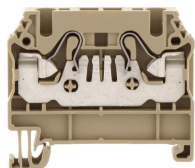
| Article number | Article name | GTIN (EAN) | Packaging unit |
|----------------|--------------|---------------|----------------|
| <u>3221.2</u> | FRK 4/3A BG | 4044211109981 | 100 |

##INVERSE##CONTA-CONNECT



Feed-through terminal, Push-in connection, Mounting type: Mounting rail TS 35/7.5, Rated cross-section: 4 mm², Width: 6.1 mm, Colour: Beige

| Article number | Article name | GTIN (EAN) | Packaging unit |
|----------------|--------------|---------------|----------------|
| <u>3222.2</u> | FRK 4/4A BG | 4044211110048 | 100 |



Feed-through terminal, Push-in connection, Mounting type: Mounting rail TS 35/7.5, Rated cross-section: 4 mm², Width: 6.1 mm, Colour: Beige

| Article number | Article name | GTIN (EAN) | Packaging unit |
|----------------|--------------|---------------|----------------|
| <u>3220.2</u> | FRK 4/2A BG | 4044211109929 | 100 |