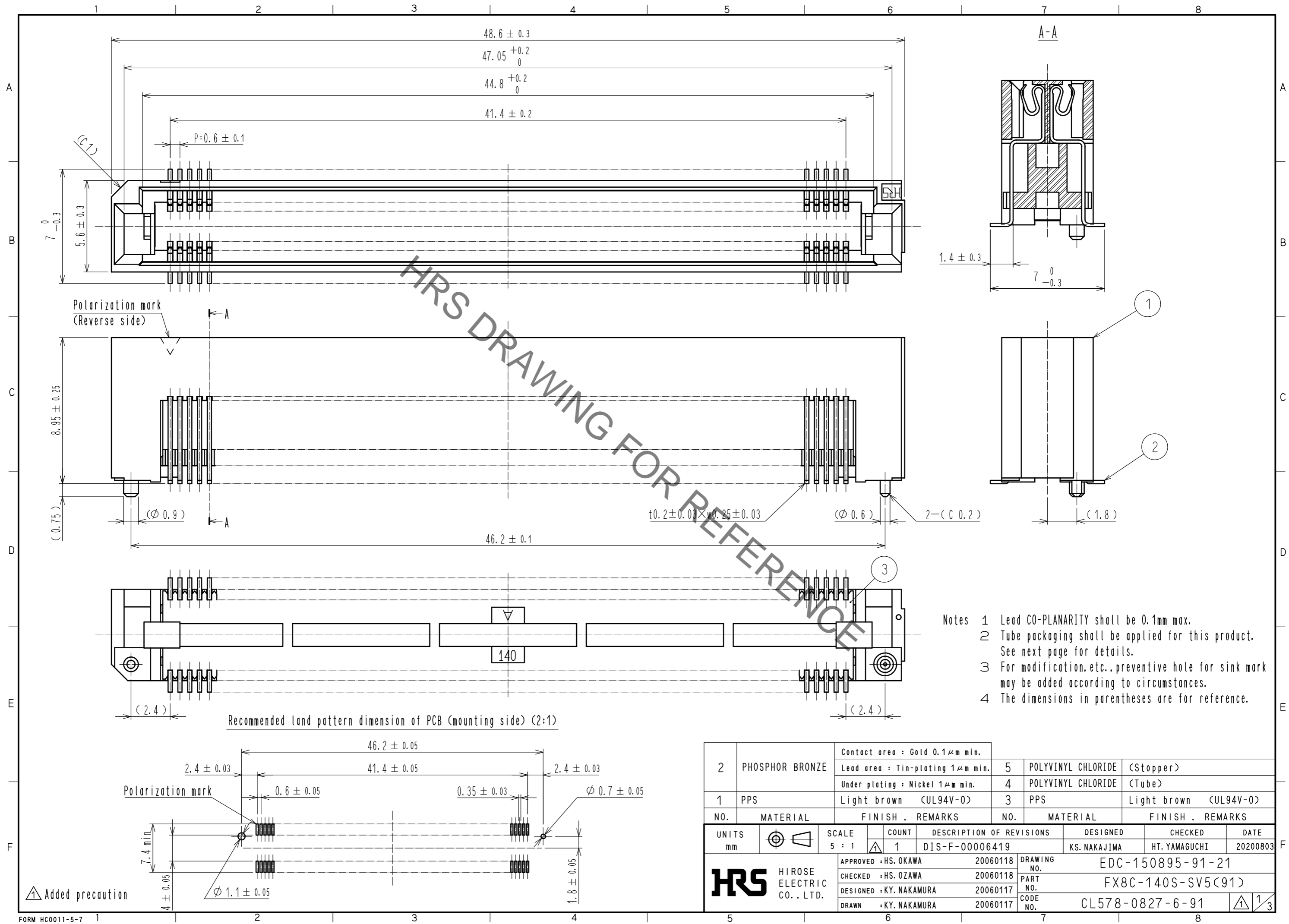


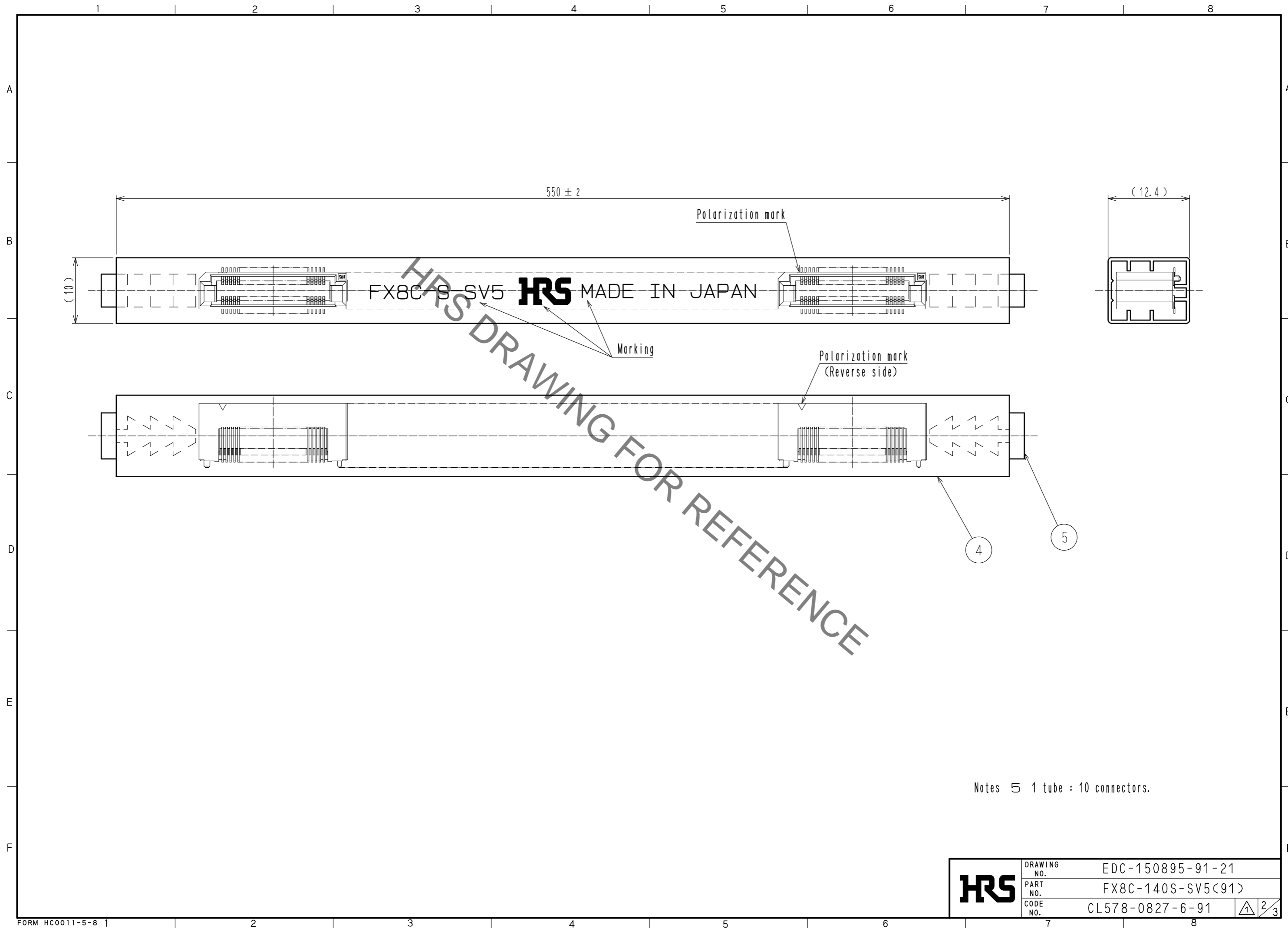
May.1.2023 Copyright 2023 HIROSE ELECTRIC CO., LTD. All Rights Reserved.  
In case of consideration for using Automotive equipment / device which demand high reliability, kindly contact our sales window correspondents.



- Notes
- 1 Lead CO-PLANARITY shall be 0.1mm max.
  - 2 Tube packaging shall be applied for this product. See next page for details.
  - 3 For modification, etc., preventive hole for sink mark may be added according to circumstances.
  - 4 The dimensions in parentheses are for reference.

2	PHOSPHOR BRONZE	Contact area : Gold 0.1μm min.	5	POLYVINYL CHLORIDE	(Stopper)
		Lead area : Tin-plating 1μm min.	4	POLYVINYL CHLORIDE	(Tube)
		Under plating : Nickel 1μm min.	3	PPS	Light brown (UL94V-0)
1	PPS	Light brown (UL94V-0)			
NO.	MATERIAL	FINISH . REMARKS	NO.	MATERIAL	FINISH . REMARKS
UNITS	∅	SCALE	COUNT	DESCRIPTION OF REVISIONS	
mm		5 : 1	1	DIS-F-00006419	
DESIGNED		CHECKED		DATE	
KS. NAKAJIMA		HT. YAMAGUCHI		20200803	
APPROVED : HS. OKAWA			20060118		
CHECKED : HS. OZAWA			20060118		
DESIGNED : KY. NAKAMURA			20060117		
DRAWN : KY. NAKAMURA			20060117		
DRAWING NO.			EDC-150895-91-21		
PART NO.			FX8C-140S-SV5(91)		
CODE NO.			CL578-0827-6-91		
			1/3		

May.1.2023 Copyright 2023 HIROSE ELECTRIC CO., LTD. All Rights Reserved.  
In case of consideration for using Automotive equipment / device which demand high reliability, kindly contact our sales window correspondents.

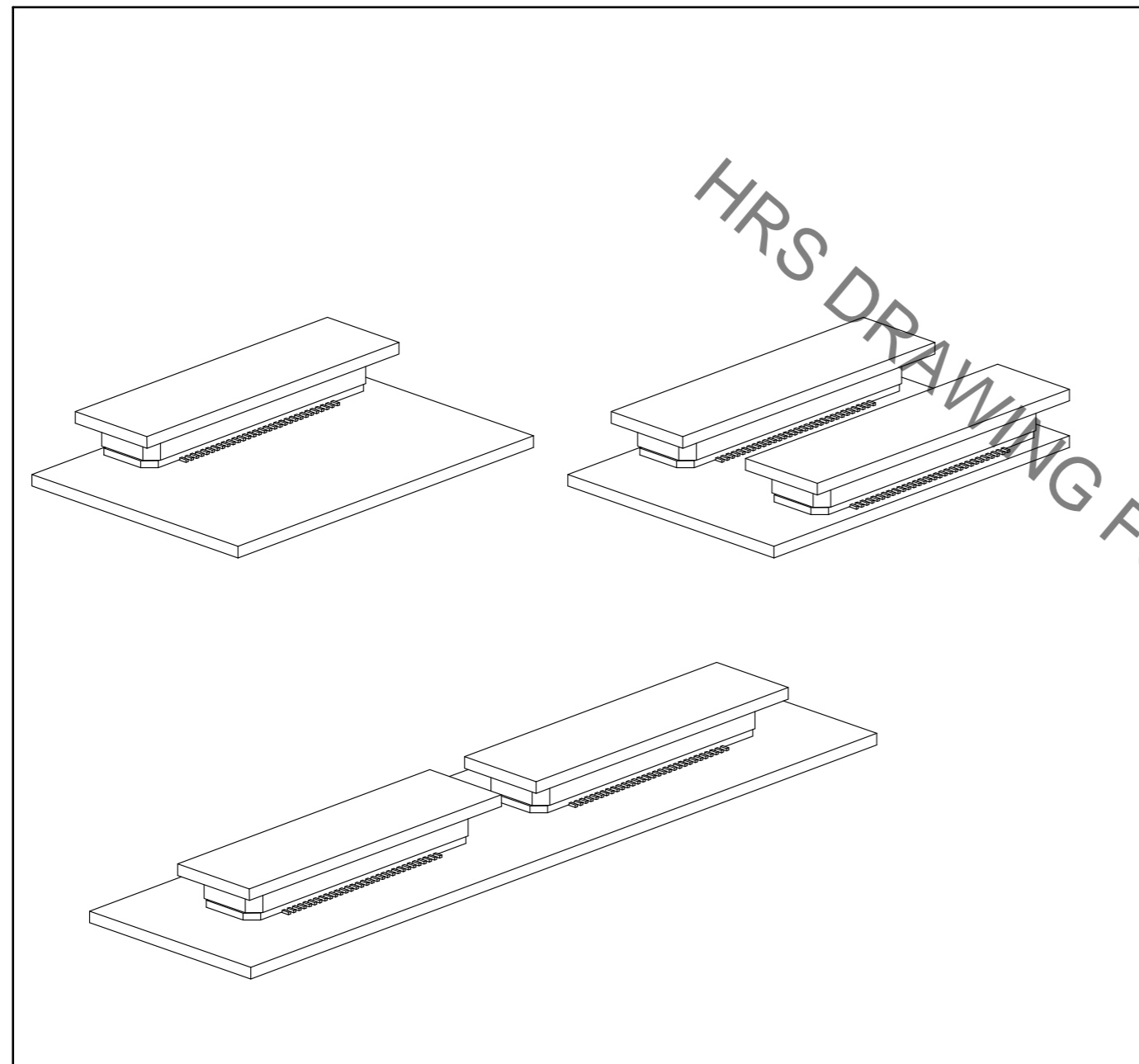


May.1.2023 Copyright 2023 HIROSE ELECTRIC CO., LTD. All Rights Reserved.  
In case of consideration for using Automotive equipment / device which demand high reliability, kindly contact our sales window correspondents.

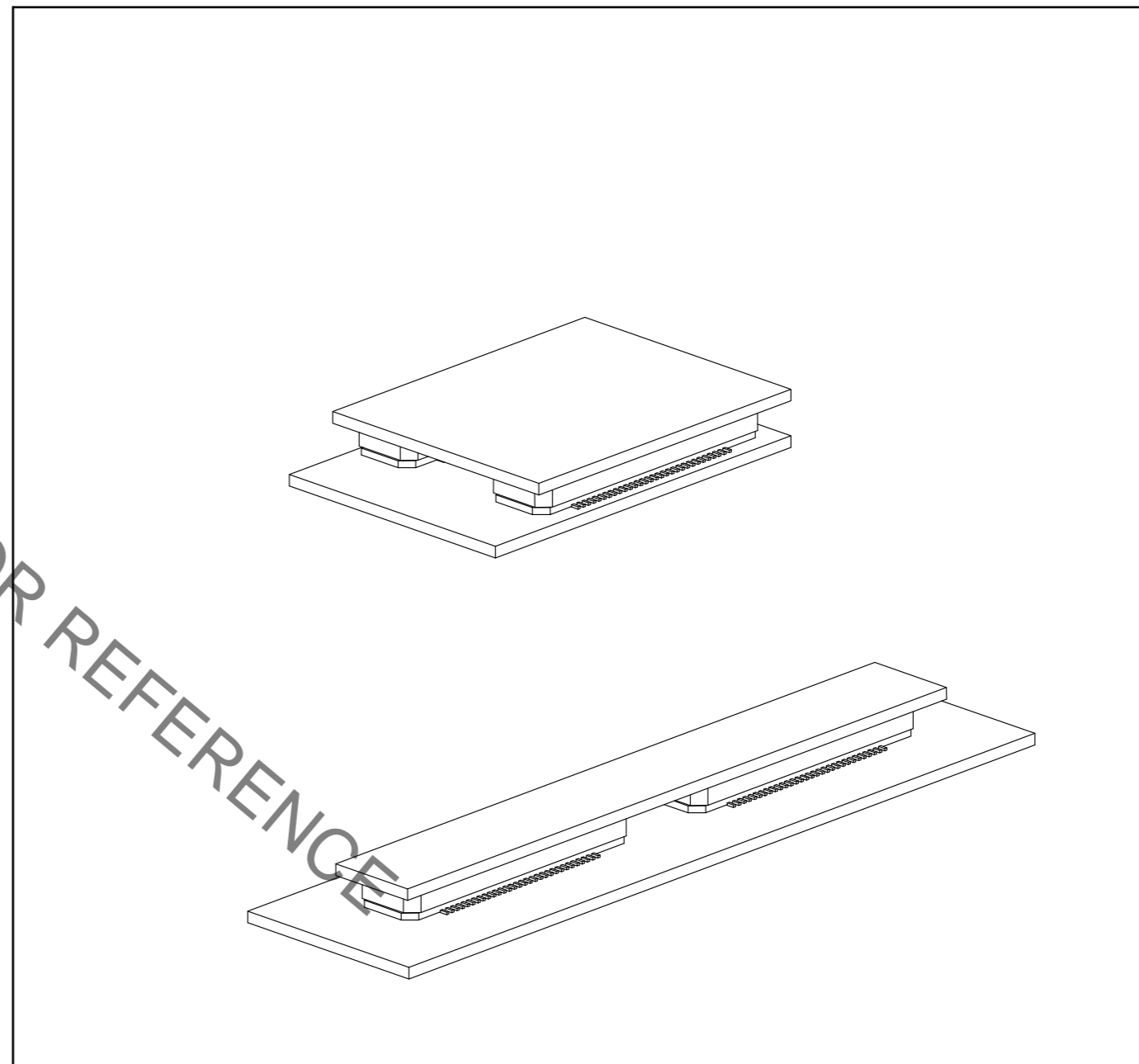
【 Precaution 】

When a board with multiple connectors mounted is mated, the connector may be damaged or deformed.  
Please divide one side of the board so only one connector is mated per board.

OK



NG



HRS DRAWING FOR REFERENCE

<b>HRS</b>	DRAWING NO.	EDC-150895-91-21
	PART NO.	FX8C-140S-SV5(91)
	CODE NO.	CL578-0827-6-91
		3/3