

RAMO 22 K, M12, round collar, 1 NC + 1 NO, Gold, M12 4-pin A-coded, frontring black, 1 x 90°, shape V, latching, key removal position 0+1


NEW


fields of application

- › Measurement-control-regulation
- › Electrical engineering
- › Mechanical and system engineering
- › Signalling systems
- › Vehicle construction
- › Chemical industry
- › Industrial robots

special features

- › Precise haptics
- › Safe gold contacts
- › Simple M12 plug&play connection
- › Protected contacts due to sealed housing

description

Keylock switch with various switching positions and M12 terminal

technical data

> general

illuminated	No
Color	black
Collar color	black
Front ring color	black
Collar shape	round
Operating temperature, min.	-40 °C
Operating temperature, max.	85 °C
Storage temperature, min.	-40 °C
Storage temperature, max.	90 °C
Shock resistance according to standard IEC 60068-2-27	30 g at 11 ms amplitude semi-sinusoidal
Packaging	Box
Packaging unit	2 pcs.
Environment resistance	IEC 60068-2-14 IEC 60068-2-30 IEC 60068-2-78
Operating life	50,000 Cycles
B10	62,627 Cycles
Degree of protection, front side, according to DIN EN 60529	IP65
Degree of protection, rear side, according to DIN EN 60529	IP65

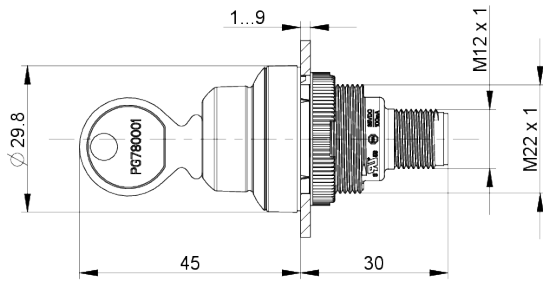
direct links

- › [RAFI eCatalog](#)

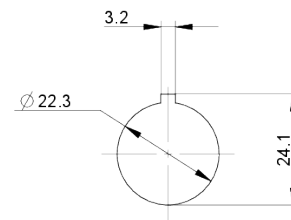
Salt-spray resistance according to standard	IEC 60068-2-11
RoHS compliant	Yes
REACH compliant	Yes
oscillation resistance according to standard IEC 60068-2-6	5 g at 10...500 Hz
> mounting diameters	
Mounting hole	22.3 mm
Mounting depth	30 mm
Installation height	45 mm
Outside dimension, length	29.8 mm
Outside dimension, width	29.8 mm
Collar dimension	29.8 mm
> mechanical data	
Actuation function	latching
Operating force, max.	1.3 N
Contact function	1 NC + 1 NO
Contact material	Gold
Key lock	Kaba
Key removal position	0+1
Rotating angle	1 x 90°, shape V
Fixing	Threaded ring
Threaded ring torque, max.	1.2 Nm
Terminal on the rear	M12 4-pin A-coded
PIN 1	Normally closed contact 1 Normally open contact 1
PIN 2	Normally closed contact 1
PIN 4	Normally open contact 1
> electrical data	
Rated voltage, min.	10 V
Rated voltage, max.	32 V
Rated current, max.	0.1 A

drawings

Dimensioned drawing



Mounting hole drawing



Schematic diagram

