

Han-Modular Flexbox carrier hood (A...D)

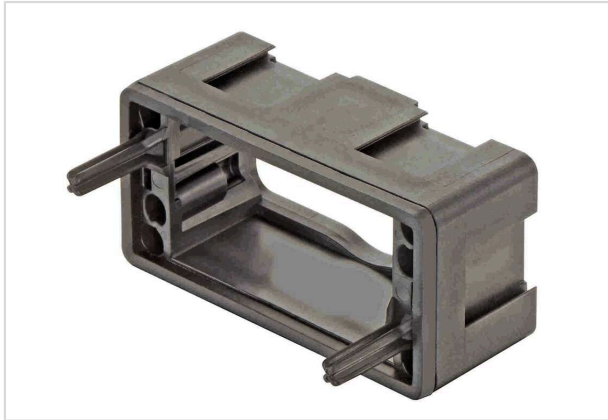


Image is for illustration purposes only. Please refer to product description.

Part number	09 14 004 8101
Specification	Han-Modular Flexbox carrier hood (A...D)
HARTING eCatalogue	https://b2b.harting.com/09140048101

Identification

Category	Hoods/Housings
Series of hoods/housings	Han-Modular® Flexbox
Type of hood/housing	Carrier hood
Description of hood/housing	for 4 modules A ... D

Technical characteristics

Limiting temperature	-40 ... +125 °C
Note on the limiting temperature	For use as a connector according to IEC 61984.
Degree of protection acc. to IEC 60529	IP54

Material properties

Material (hood/housing)	Polyamide (PA) Fibre-glass reinforced
Colour (hood/housing)	RAL 9005 (jet black)
Material (seal)	NBR
Colour (seal)	RAL 9005 (jet black)
Material flammability class acc. to UL 94	V-0
RoHS	compliant
ELV status	compliant
China RoHS	e
REACH Annex XVII substances	Not contained
REACH ANNEX XIV substances	Not contained
REACH SVHC substances	Not contained

Material properties

Fire protection on railway vehicles EN 45545-2 (2020-08)

Requirement set with Hazard Levels R22 (HL 1-3)
R23 (HL 1-3)

Specifications and approvals

Specifications IEC 61984
EN 45545-1
EN 45545-2

Commercial data

Packaging size 1
Net weight 82.8 g
Country of origin China
European customs tariff number 85389099
GTIN 5713140182042
eCl@ss 27440202 Shell for industrial connectors

Safety note



The modules listed in the table below are excluded from being used in the Han-Modular® Flexbox.

Module	Part no.
Han® 100A module (axial screw)	09 14 002 265X / 09 14 002 275X
Han® 70A module (axial screw)	09 14 002 264X / 09 14 002 274X
Han® 70A Hybrid module	09 14 005 264X / 09 14 005 274X
Han® HV module ("double")	09 14 002 302X / 09 14 002 312X
Han® HV Single module	09 14 002 3025 / 09 14 002 3125
Han® Megabit module	09 14 008 30XX / 09 14 008 31XX
Han-Smart® Ethernet-Switch module	09 80 113 0400

The following module is excluded from any use ≥ 1000 V in the Han-Modular® Flexbox:

Module	Part no.
Han® 300 A module	09 14 001 3004 / 09 14 001 3104