

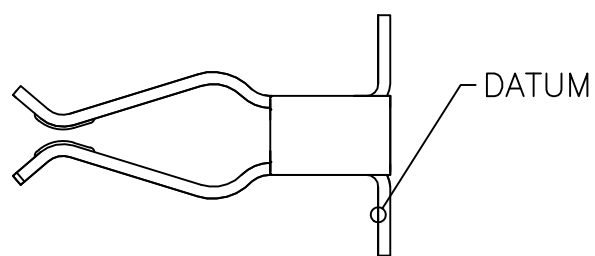
THIS DRAWING IS UNPUBLISHED.

RELEASED FOR PUBLICATION

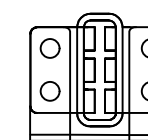
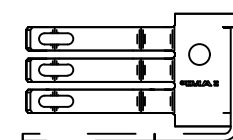
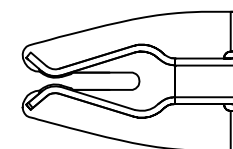
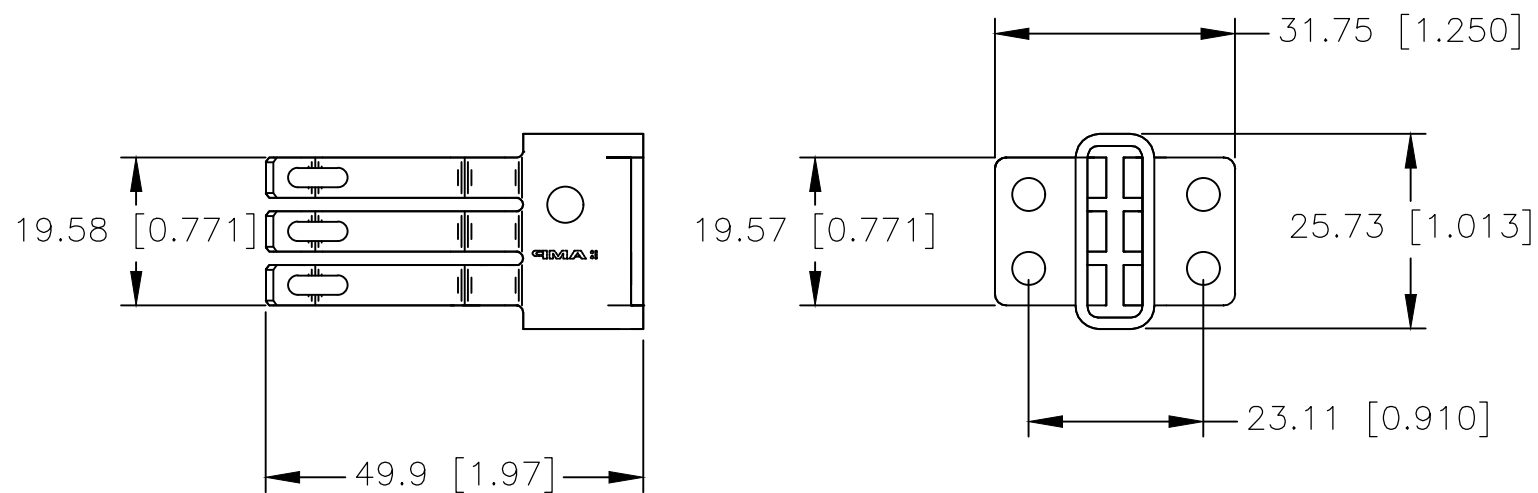
© COPYRIGHT - By -

ALL RIGHTS RESERVED.

LOC	DIST	REVISIONS			
P	LTR	DESCRIPTION	DATE	DWN	APVD
-	-	B	REV PER ECO-20-011837	25AUG2020	ML SZ

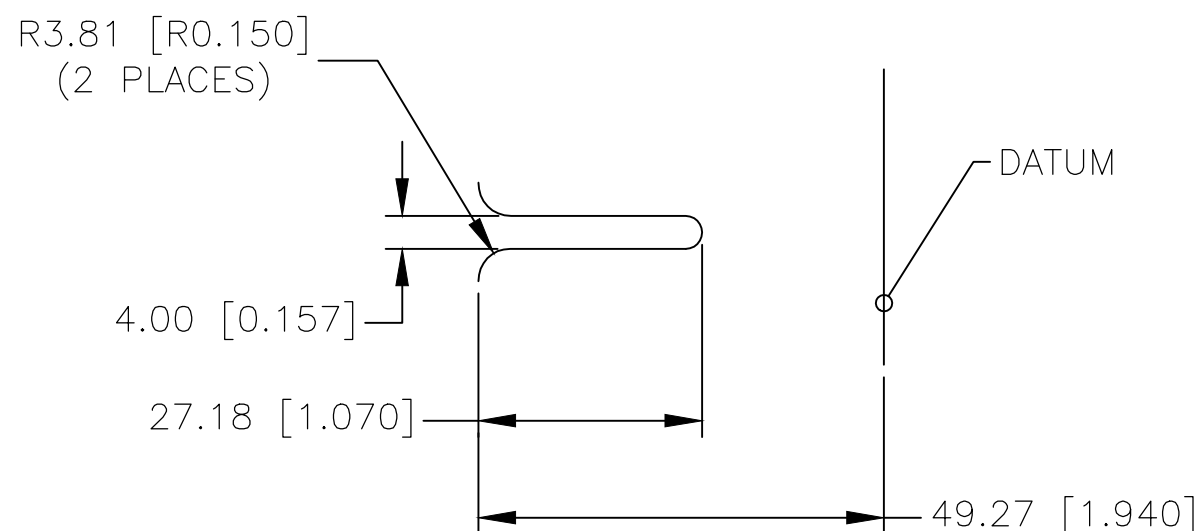


1. ALL DIMENSIONS ARE FOR REFERENCE ONLY.
2. PART MAY HAVE HOLE IN THIS LOCATION, BOTH SIDE.



BUSPLUG WITH RECOMMENDED ANTI-OVERSTRESS PLATE

THE ASSEMBLY PART NUMBER INCLUDING THE ANTI-OVERSTRESS PLATE IS 213647-1



RECOMMENDED LEAD-IN GEOMETRY FOR CUSTOMER SUPPLIED ANTI-OVERSTRESS PLATE

EOL

213648-3
PART NUMBER

THIS DRAWING IS A CONTROLLED DOCUMENT.		DWN D.RENNOX	17/APR/98	STE TE Connectivity	
DIMENSIONS: mm [INCHES]		CHK -	APVD -		
TOLERANCES UNLESS OTHERWISE SPECIFIED:		PRODUCT SPEC 108-1101		RESTRICTED TO -	
MATERIAL -		APPLICATION SPEC 114-2111		SIZE A3	CAGE CODE 00779
FINISH -		WEIGHT -		DRAWING NO C-213648	SCALE NTS
CUSTOMER DRAWING				SHEET 1 OF 1	REV B