

ECP - SERIES

BUL10256

REV. D

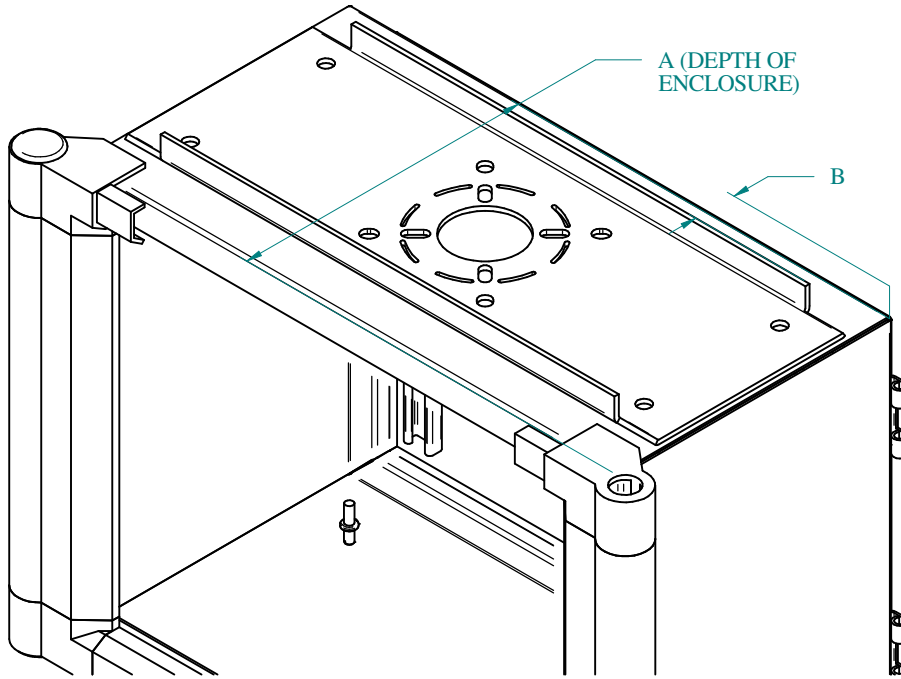
PRE ASSEMBLY INSTRUCTIONS

ASSEMBLY INSTRUCTIONS FOR COUPLINGS AND SUPPORT BRACKETS ON ECLIPSE COMMAND ENCLOSURES

CENTER THE SUPPORT BRACKET (PART 2) ON WIDTH AND DEPTH OF THE ENCLOSURE. SEE CHART BELOW. CLAMP DOWN THE BRACKET AT THE LOCATION GIVEN BELOW ON THE OUTSIDE OF THE ENCLOSURE.

CHECK THE 3 DRILL PATTERNS ON PAGE 2 FOR THE PATTERN THAT APPLIES TO THE COUPLING (PART 1) PURCHASED. USING THE SUPPORT BRACKET AS A TEMPLATE, MARK AND DRILL THROUGH THE ECP ENCLOSURE AS SHOWN.

ASSEMBLE THE COUPLING TO THE ENCLOSURE AS PRE-ASSEMBLY INSTRUCTIONS.



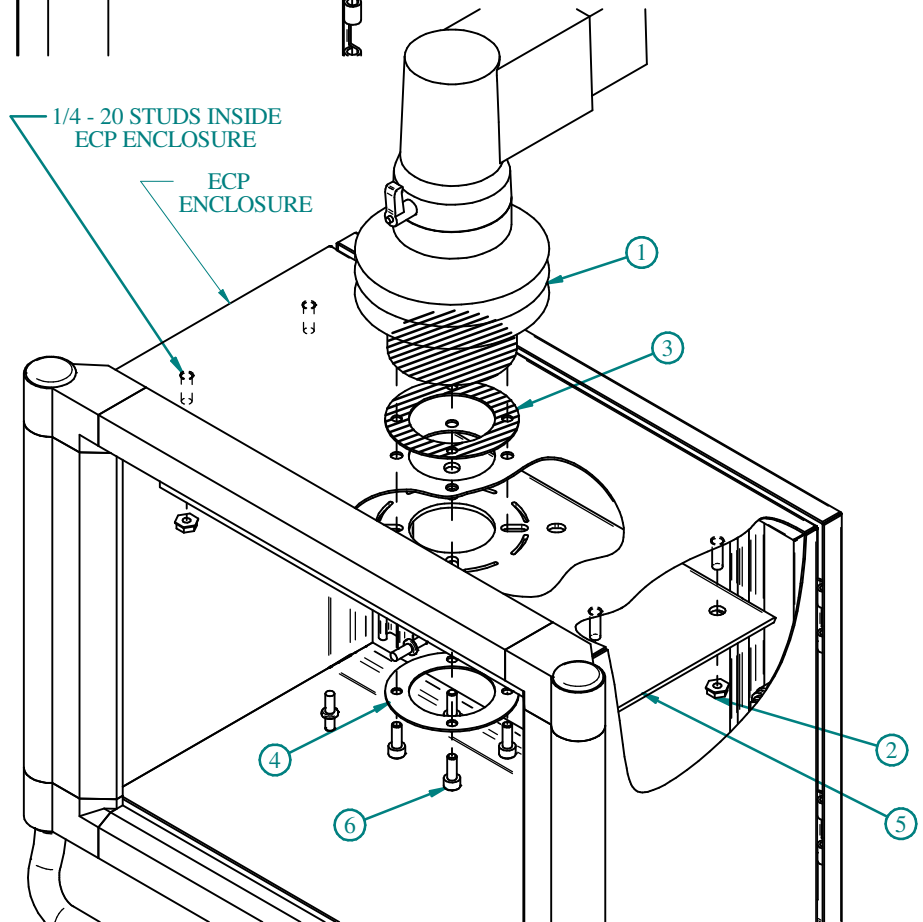
ECP #	A	B
ECP12126	6" (152.5mm)	.125" (3.2mm)
ECP12168	8" (203mm)	1.125" (28.6mm)
ECP161610	10" (254mm)	2.125" (54mm)
ECP162010	10" (254mm)	2.125" (54mm)
ECP202412	12" (305mm)	3.125" (79.4mm)
ECP20246	6" (152.5mm)	.125" (3.2mm)

ASSEMBLY INSTRUCTIONS

FASTEN SUPPORT BRACKET (PART 2) TO THE INSIDE OF THE ECP ENCLOSURE USING 1/4 - 20 KEP NUTS (PART 5) OVER THE FOUR STUDS IN THE ENCLOSURE.

ASSEMBLE THE COUPLING (PART 1) TO THE ENCLOSURE WITH THE GASKET (PART 3) TO OUTSIDE AND METAL RING (PART 4) TO INSIDE AS SHOWN TO THE RIGHT.

FASTEN THE COUPLING TO ENCLOSURE USING 4 SOCKET SCREWS (PART 6).



PART #	QTY.	DESCRIPTION
1	1	COUPLING
2	1	SUPPORT BRACKET
3	1	GASKET
4	1	METAL RING (ON 50 & 80 SERIES ONLY)
5	4	1/4 - 20 KEP NUT
6	4	M6 OR M8 SOCKET SCREW

<p>TOOL BOX</p>	<p>3/8 or 7/16" Socket Wrench or Driver</p>	<p>5mm or 6mm Allen Key</p>	<p>Tape Measure</p>	<p>"C" Clamp</p>
-----------------	---	-----------------------------	---------------------	------------------



ECP - SERIES

BUL10256

REV. D

ASSEMBLY INSTRUCTIONS FOR COUPLINGS AND SUPPORT BRACKETS ON ECLIPSE COMMAND ENCLOSURES

DRILLING INSTRUCTIONS

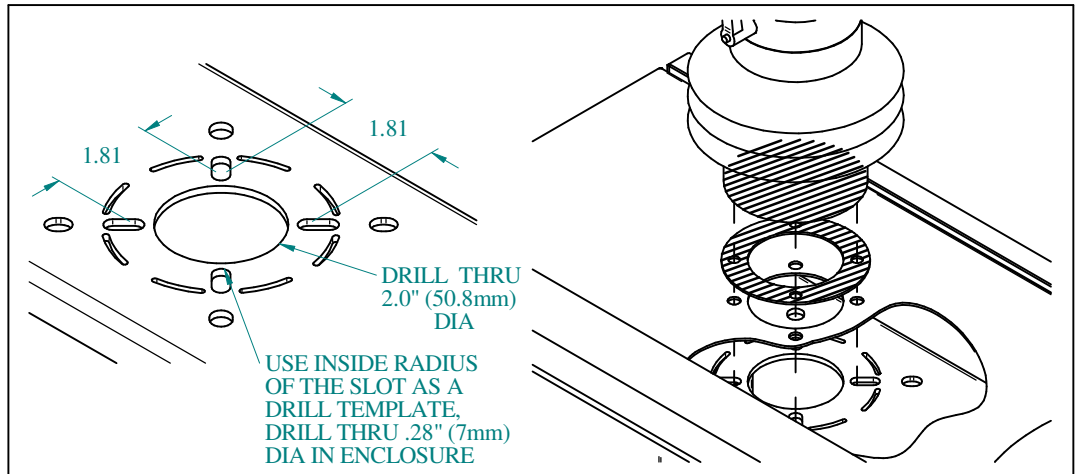
FASTEN THE SUPPORT BRACKET (PART 2) AS SHOWN ON PAGE 1 IN PRE ASSEMBLY INSTRUCTIONS.

DRILL THE CENTER HOLE AND THE 4 MOUNTING HOLES IN THE SIZE AND LOCATION SPECIFIED BY THE COUPLINGS LISTED.

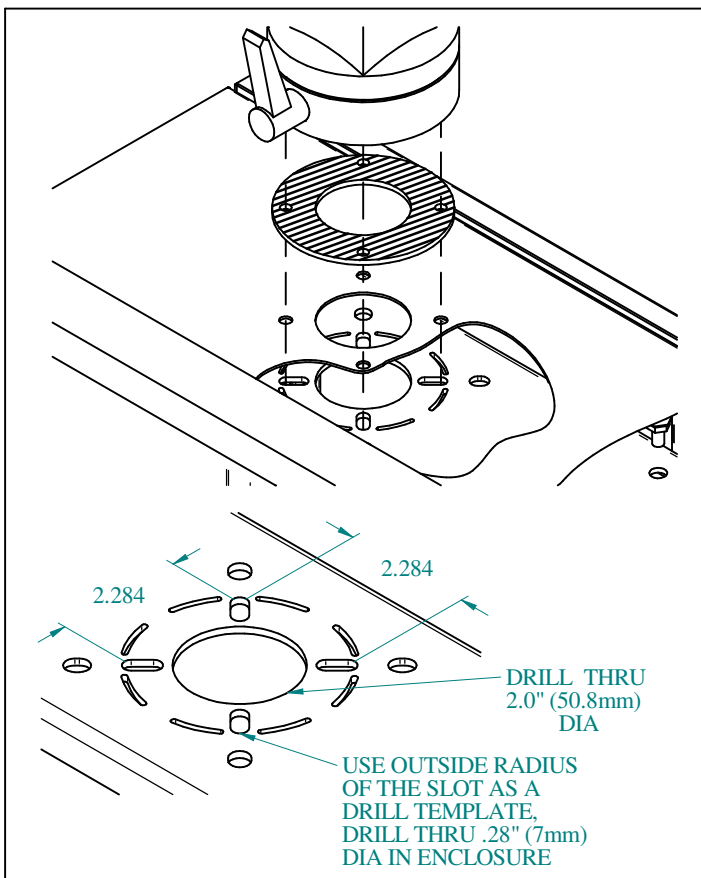
DE-BURR HOLES AND USE THE TOUCH UP PAINT TO COAT RAW EDGES.

ASSEMBLE THE COUPLING TO THE ENCLOSURE AS SHOWN ON PAGE 1.

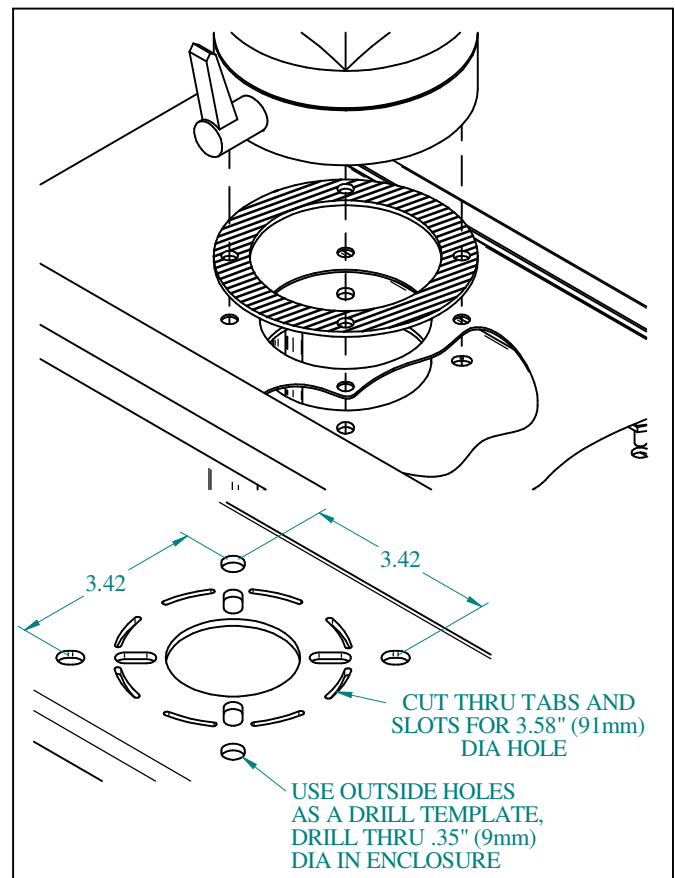
DRILLING PATTERN FOR TARA COUPLINGS



DRILLING PATTERN FOR 50 SYSTEM COUPLINGS



DRILLING PATTERN FOR 80 SYSTEM COUPLINGS



TOOL BOX



**HAMMOND
MANUFACTURING™
ENCLOSURES**

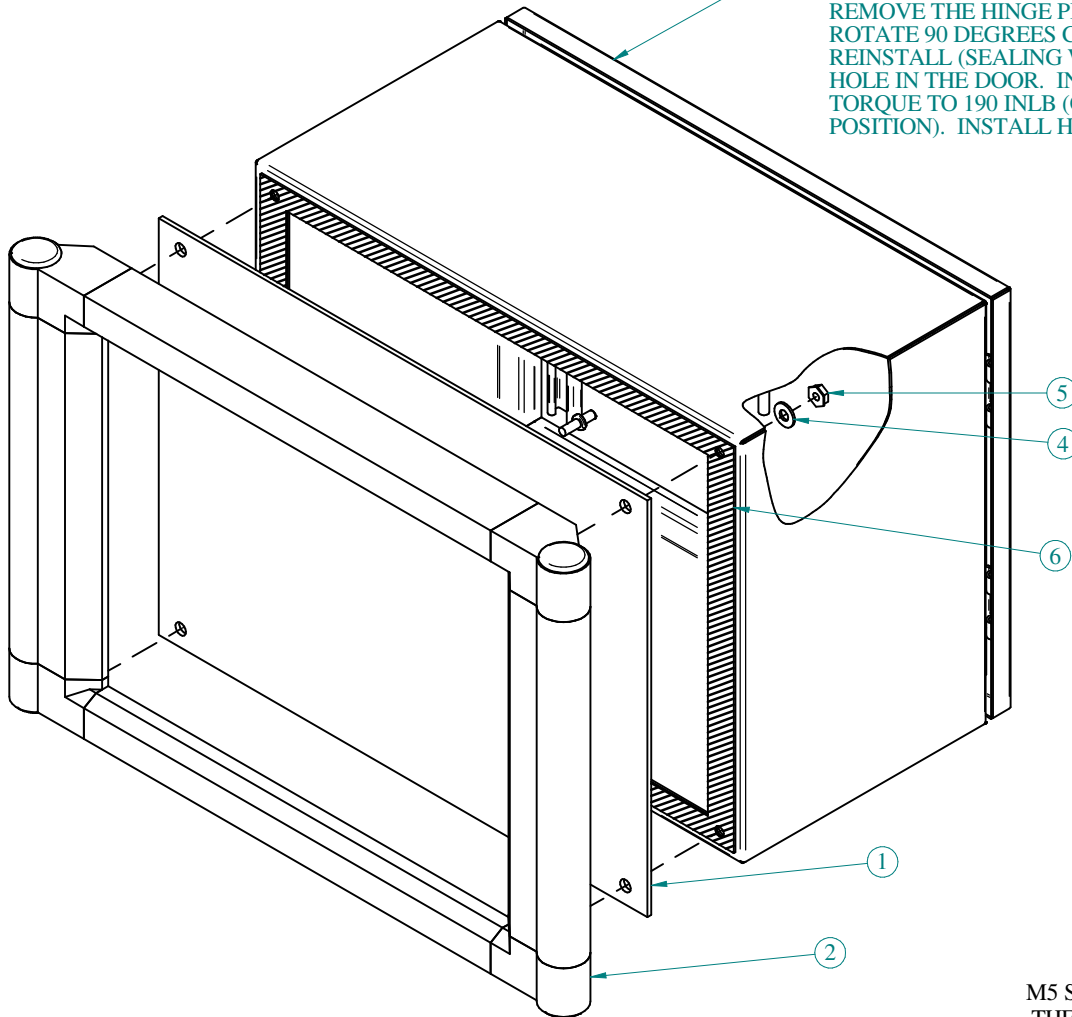
ECP - SERIES

BUL10256

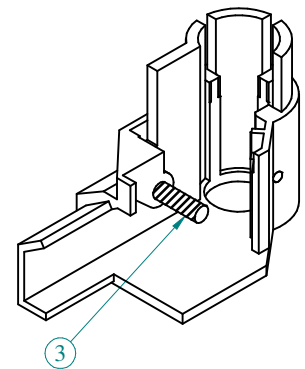
REV. D

ASSEMBLY INSTRUCTIONS FOR REMOVAL OF ALUMINUM FRONT PANEL ON ECLIPSE COMMAND ENCLOSURES

NOTE: REAR DOOR ON ECP ENCLOSURE. IF THE REAR DOOR IS REVERSED FROM R.H. HINGE TO L.H. HINGE (WHEN FACING THE REAR OF THE ENCLOSURE), REMOVE THE HINGE PINS, REMOVE THE 1/4 TURN LATCH, ROTATE 90 DEGREES COUNTER CLOCK WISE THEN REINSTALL (SEALING WASHER IN PLACE) THROUGH THE HOLE IN THE DOOR. INSTALL LARGE RETAINING NUT AND TORQUE TO 190 INLB (CAM MUST TURN UP IN UNLATCHED POSITION). INSTALL HINGE PINS FROM TOP TO BOTTOM.



PART #	QTY.	DESCRIPTION
1	1	ALUMINUM FACE PANEL
2	1	FRONT FRAME EXTRUSION
3	4	5M SOCKET SCREW
4	4	SEALING WASHER
5	4	M5 HEX NUT
6	1	SEALING GASKET



M5 SOCKET SCREWS ARE SECURED IN THE FRAME. IF ONE LOOSENS WHILE REMOVING THE PANEL, RERIGHTEN BEFORE RE-ASSEMBLY. SEE STEP C.

ASSEMBLY INSTRUCTIONS

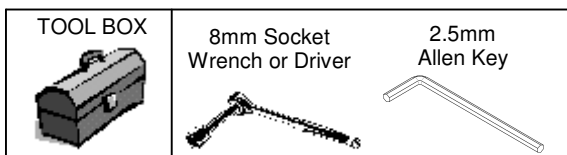
OPEN THE REAR DOOR TO ACCESS THE MOUNTING HARDWARE (PARTS 3, 4 & 5) THAT FASTEN THE ALUMINUM FACE PANEL (PART 1) AND FRONT FRAME EXTRUSION (PART 2) TO THE ECP ENCLOSURE. THE HEX NUTS AND SEALING WASHERS ARE LOCATED IN EACH CORNER ON THE INSIDE OF THE ENCLOSURE.

UNDO HEX NUTS AND THE SEALING WASHERS AND REMOVE THE FRONT PANEL AND THE FRONT FRAME EXTRUSION FROM THE ENCLOSURE. CHECK THAT THE SEALING GASKET (PART 6) IS NOT DAMAGED. SEE NOTE ON "BEFORE RE-ASSEMBLY".

IF A M5 SOCKET SCREW LOOSENS WHILE REMOVING THE PANEL, RE-TIGHTEN BEFORE ASSEMBLING USING A 2.5mm ALLEN KEY.

AFTER REWORKING THE FRONT PANEL, ASSEMBLE THE FACE PANEL AND THE FRONT FRAME EXTRUSION TO THE ENCLOSURE USING HEX NUTS AND SEALING WASHERS. TORQUE HEX NUTS TO 30 IN/LB.

CAUTION: CHECK THE GASKET ON THE



HAMMOND
MANUFACTURING™
ENCLOSURES