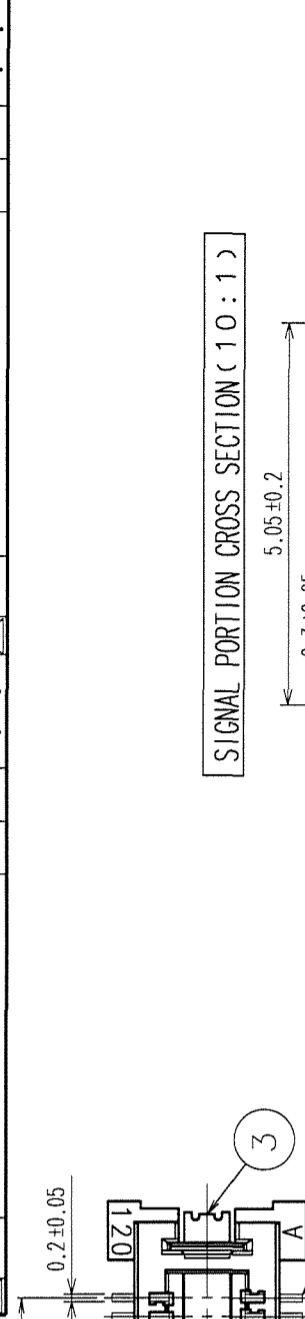
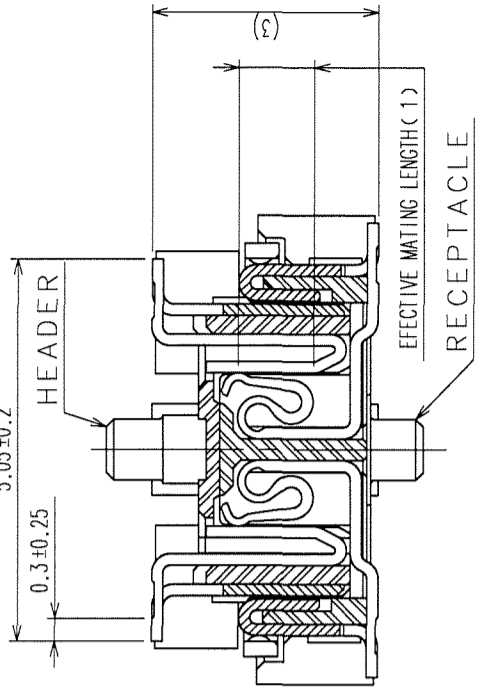


May.1.2023 Copyright 2023 HIROSE ELECTRIC CO., LTD. All Rights Reserved.
 2 In case of consideration for using Automotive equipment / device which demand high reliability, kindly contact our sales window correspondents.

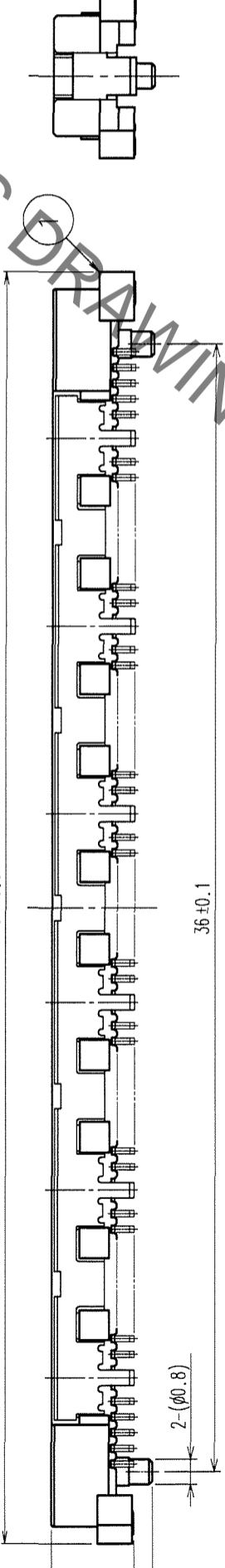
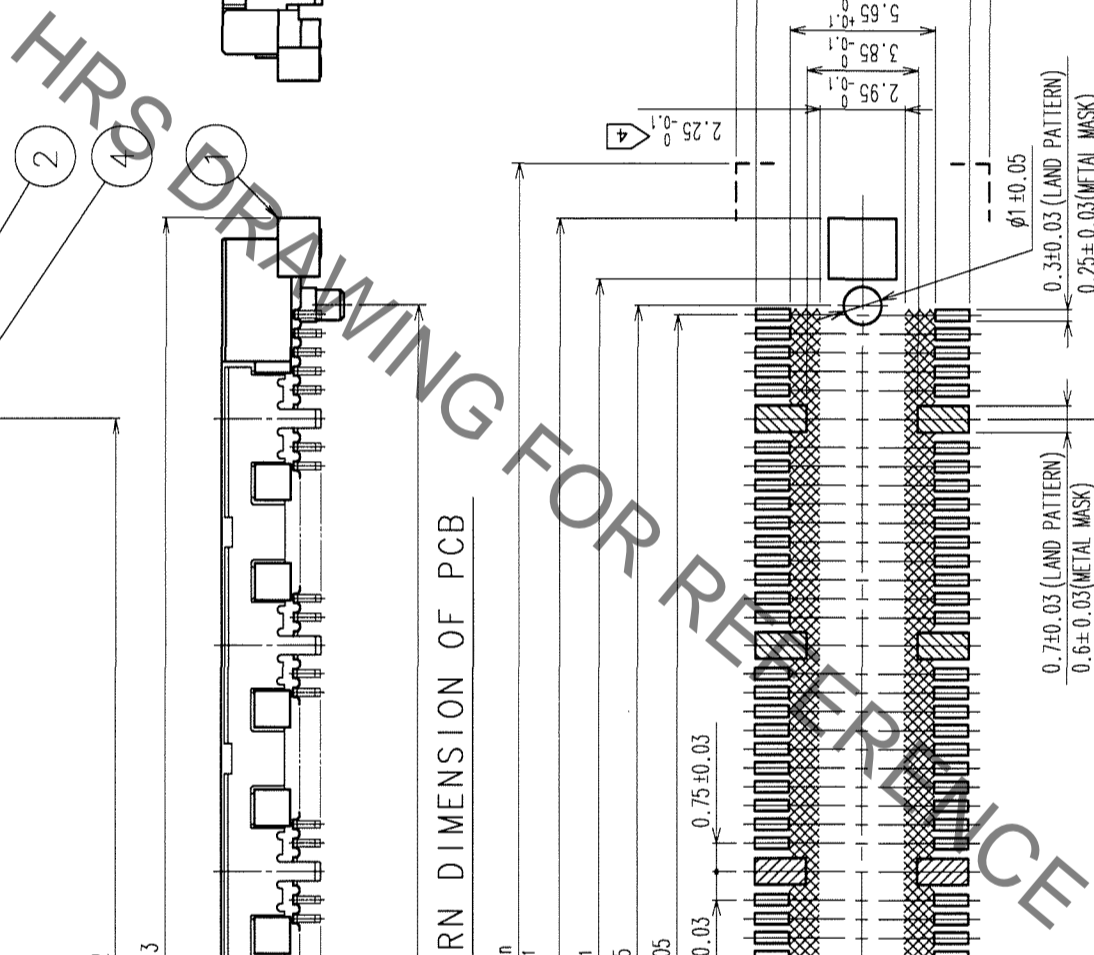
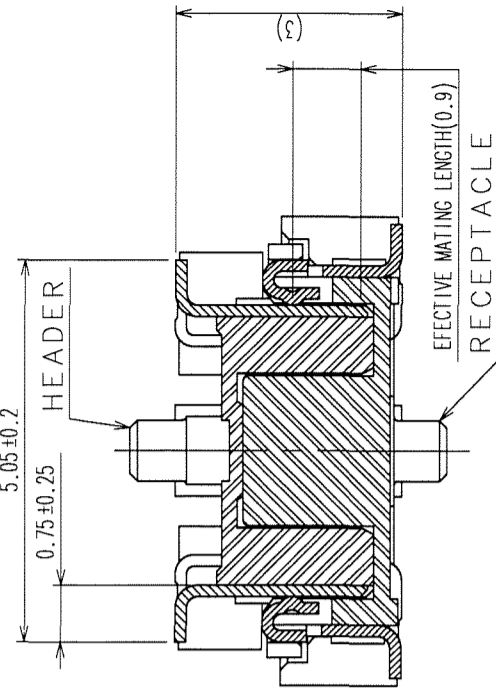
COUNT	DESCRIPTION OF REVISIONS	BY	CHKD	DATE
△				
△				



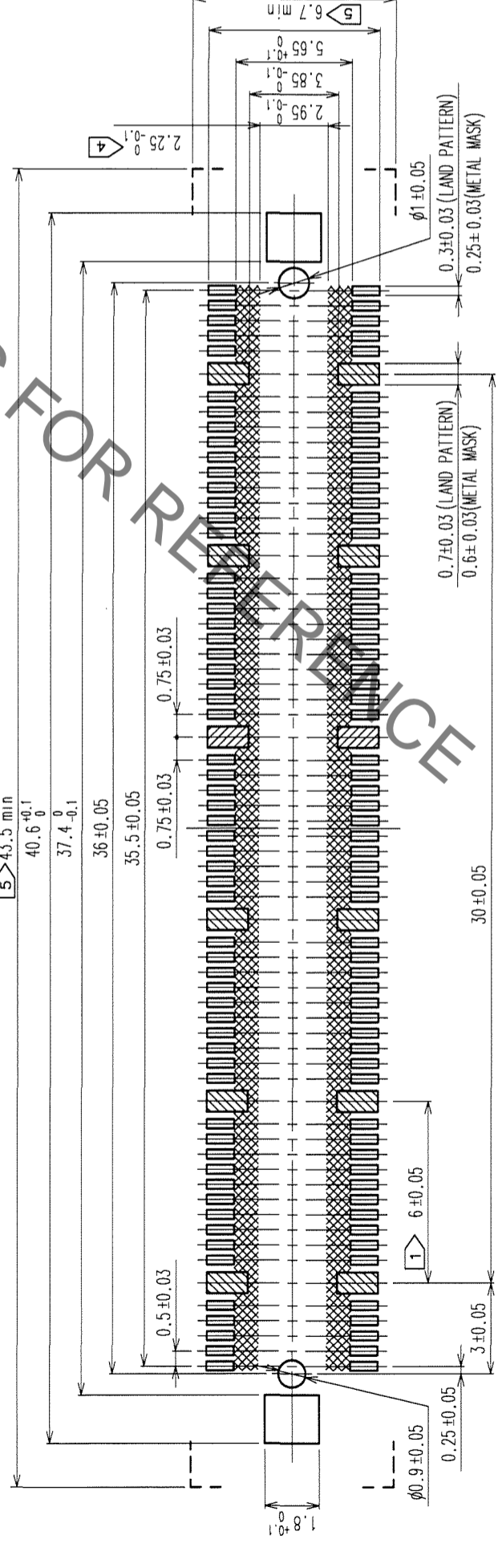
SIGNAL PORTION CROSS SECTION (10:1)



GROUND PORTION CROSS SECTION (10:1)



RECOMMENDED LAND PATTERN DIMENSION OF PCB



- NOTES
- 12 HATCHED PARTS: GROUND CIRCUIT.
 - SMT LEAD-COPLANARITY: 0.1 MAX.
 - THIS PRODUCT HAS NO POLARITY TO PATTERN FOR MOUNTING.
 - MAKE SURE WIDTH OF PATTERN IS WITHIN THAT OF LAND, OR LEAD MAY TOUCH PATTERN. (THIS APPLIES TO HATCHED AREA.)
 - DO NOT MOUNT OTHER DEVICES ONTO [] AREA, OR MATING PAIR CANNOT BE MATED.
 - THE DIMENSIONS IN PARENTHESES ARE FOR REFERENCE.

NO.	PHOSPHOR BRONZE	TIN-PLATING	FINISH, REMARKS	MATERIAL	COPPER ALLOY	CONTACT AREA: GOLD 0.1 μm min.
3, 4						LEAD AREA: GOLD FLASH
1	LCP	BEIGE	UL94V-0			UNDER PLATING: NICKEL 1 μm min.

NO.	MATERIAL	FINISH, REMARKS	DESIGNED	CHECKED	APPROVED	RELEASED
	CL					
			06.02.20	K. NAKAMURA	H. Okura	06.02.20

DRAWING NO.	PART NO.
EDC3-152617-25	FX11A-120P/12-SVO.5(71)

SCALE	UNITS	CODE NO.
5:1	mm	CL573-0605-2-71

TO	
PCK	