



ANATECH ELECTRONICS INC
RF & Microwave Filters & Products

500 MHz LC Band Pass Filter

Part Number: AE500B6350



Electrical Specifications

Center Frequency: 500 MHz
Passband: 478-522 MHz
Insertion Loss: 3.0dB Max.
Return Loss: 14dB Min.
Ripple: 0.1dB Max.
Rejection: $\geq 35\text{dB}$ @ 0-437 MHz
Rejection2: $\geq 35\text{dB}$ @ 562-1300 MHz

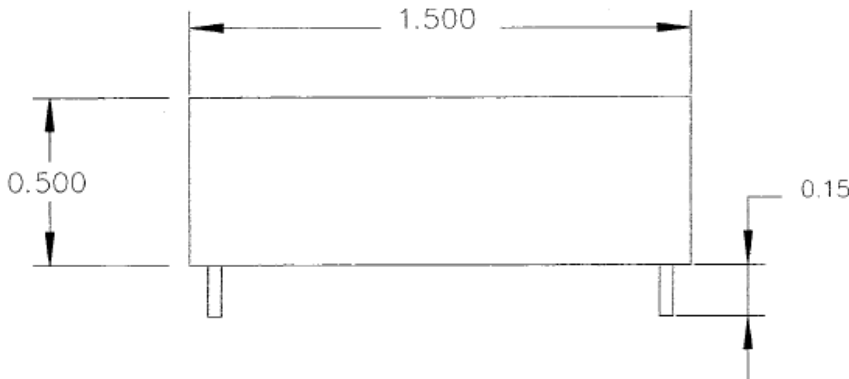
Mechanical

Connector Type: PC-Mount
Dimensions: 1.5" X 0.75" x 0.5" .

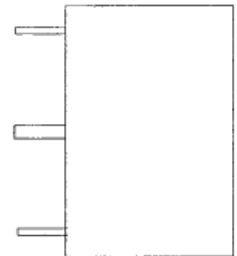
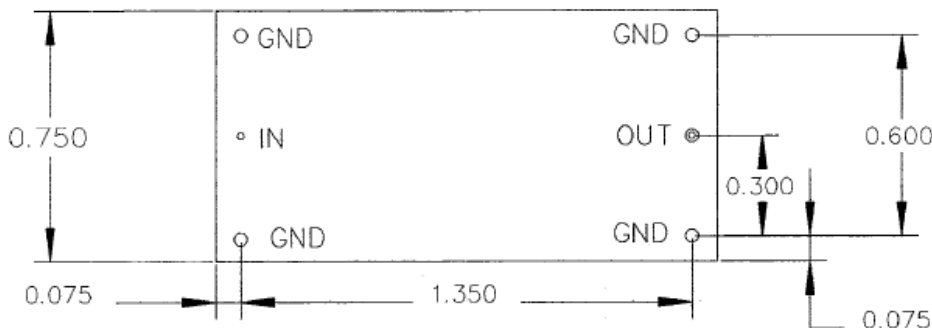
Environmental

Operating Temperature: -25°C to +70°C
Storage Temperature: -40°C to +90°C
Shock: 10 G. 11ms
Vibration: 10 G. 5 to 200Hz

Outline Drawing:



IN/OUT pin 0.02" dia, GND pin 0.04" dia





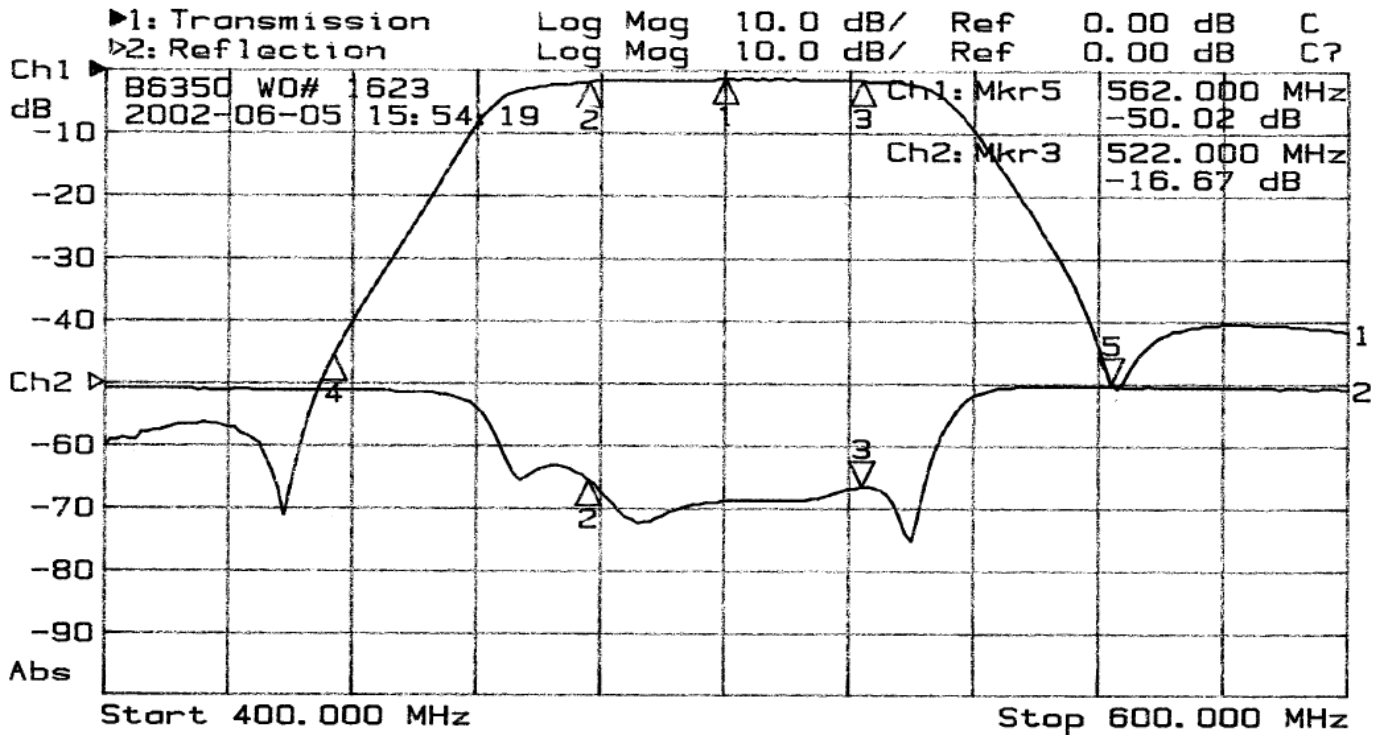
ANATECH ELECTRONICS INC
RF & Microwave Filters & Products

500 MHz LC Band Pass Filter

Part Number: AE500B6350



Response Plot:



1: Mkr (MHz)	dB	2: Mkr (MHz)	dB
1: 500.00	-1.39		
2: 478.00	-1.83	2: 478.00	-15.57
3: 522.00	-1.69	3> 522.00	-16.67
4: 437.00	-45.59		
5> 562.00	-50.02		