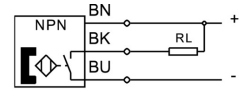
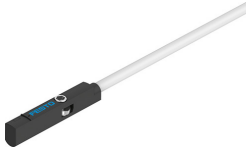


Proximity sensor SMT-10M-NS-24V-E-2,5-L-OE

Part number: 551377

FESTO



Data sheet

| Feature | Value |
|--|--|
| Design | for round slot |
| Conforms to standard | EN 60947-5-2 |
| Symbol | 00991149 |
| Certification | RCM compliance mark |
| CE marking (see declaration of conformity) | As per EU EMC directive As per EU RoHS directive |
| UKCA marking (see declaration of conformity) | To UK instructions for EMC To UK RoHS instructions |
| KC characters | KC EMC |
| Special features | Oil-resistant |
| Note on materials | RoHS-compliant Halogen-free |
| Application note | Support / actuator-sensor overview "The right sensor for the actuator" |
| Measured variable | Position |
| Measuring principle | Magneto-resistive |
| Ambient temperature | -40 °C ... 70 °C |
| Repetition accuracy | 0.2 mm |
| Switching output | NPN |
| Switching element function | N/O contact |
| On time | ≤1.3 ms |
| Switch-off time | ≤1.4 ms |
| Max. switching frequency | 150 Hz |
| Max. output current | 100 mA |
| Max. output current in mounting kits | 50 mA |
| Max. switching capacity DC | 2.8 W |
| Max. switching capacity DC in mounting kits | 1.5 W |
| Voltage drop | ≤1.5 V |
| Short-circuit protection | yes |
| Overload protection | Available |
| Rated operating voltage DC | 24 V |
| DC operating voltage range | 5 V ... 30 V |
| Reverse polarity protection | for all electrical connections |
| Electrical connection 1, connection type | Cable |
| Electrical connection 1, connection technology | Open end |
| Electrical connection 1, number of pins/wires | 3 |
| Connection outlet orientation | Longitudinal |

| Feature | Value |
|--|--|
| Connector cable test conditions | Flexural strength: as per Festo standard Test conditions on request Energy chain > 5 million cycles, bending radius 28 mm Torsional resistance: > 300 000 cycles, ±270°/0.1 m |
| Cable length | 2.5 m |
| Cable characteristic | Suitability for energy chains/robot applications |
| Material of cable sheath | TPE-U(PUR) |
| Type of mounting | Screwed tightly Can be inserted in slot from above |
| Max. tightening torque | 0.4 Nm |
| Mounting position | Any |
| Product weight | 16.8 g |
| Housing material | PA-reinforced High-alloy stainless steel |
| Switching status indication | LED yellow |
| Ambient temperature with flexible cable installation | -20 °C ... 70 °C |
| Degree of protection | IP65 IP68 |
| LABS (PWIS) conformity | VDMA24364-B2-L |
| Suitability for the production of Li-ion batteries | Metals with more than 1% copper, zinc or nickel by mass are excluded from use. Exceptions are nickel in steel, chemically nickel-plated surfaces, printed circuit boards, cables, electrical plug connectors and coils |
| Cleanroom class | Class 4 according to ISO 14644-1 |