

## Han ES module, cage clamp female (AU)

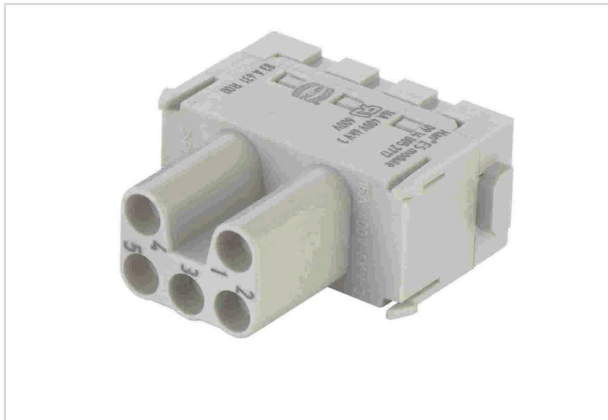


Image is for illustration purposes only. Please refer to product description.

Part number	09 14 005 2717
Specification	Han ES module, cage clamp female (AU)
HARTING eCatalogue	<a href="https://b2b.harting.com/09140052717">https://b2b.harting.com/09140052717</a>

### Identification

Category	Modules
Series	Han-Modular®
Type of module	Han® ES module
Size of the module	Single module

### Version

Termination method	Cage-clamp termination
Gender	Female
Number of contacts	5

### Technical characteristics

Conductor cross-section	0.14 ... 2.5 mm <sup>2</sup>
Rated current	16 A
Rated voltage	400 V
Rated impulse voltage	6 kV
Pollution degree	3
Rated voltage acc. to UL	600 V
Insulation resistance	>10 <sup>10</sup> Ω
Contact resistance	≤3 mΩ
Stripping length	7 ... 9 mm
Limiting temperature	-40 ... +125 °C
Mating cycles	≥500



Pushing Performance  
Since 1945

## Material properties

Material (insert)	Polycarbonate (PC)
Colour (insert)	RAL 7032 (pebble grey)
Material (contacts)	Copper alloy
Surface (contacts)	Gold plated
Material flammability class acc. to UL 94	V-0
RoHS	compliant with exemption
RoHS exemptions	6(c): Copper alloy containing up to 4 % lead by weight
ELV status	compliant with exemption
China RoHS	50
REACH Annex XVII substances	Not contained
REACH ANNEX XIV substances	Not contained
REACH SVHC substances	Yes
REACH SVHC substances	Potassium 1,1,2,2,3,3,4,4,4-nonafluorobutane-1-sulphonate Lead
ECHA SCIP number	1e38d35d-d1be-4585-8e03-95faccd739bf
California Proposition 65 substances	Yes
California Proposition 65 substances	Lead Nickel
Fire protection on railway vehicles	EN 45545-2 (2020-08)
Requirement set with Hazard Levels	R22 (HL 1-3) R23 (HL 1-3)

## Specifications and approvals

Specifications	IEC 60664-1 IEC 61984
Approvals	DNV GL
UL / CSA	UL 1977 ECBT2.E235076

## Commercial data

Packaging size	2
Net weight	16.26 g
Country of origin	Germany
European customs tariff number	85366990
GTIN	5713140020306



**Pushing Performance**  
Since 1945

## Commercial data

eCl@ss

27440217 Module for industrial connectors (power/signals)

---