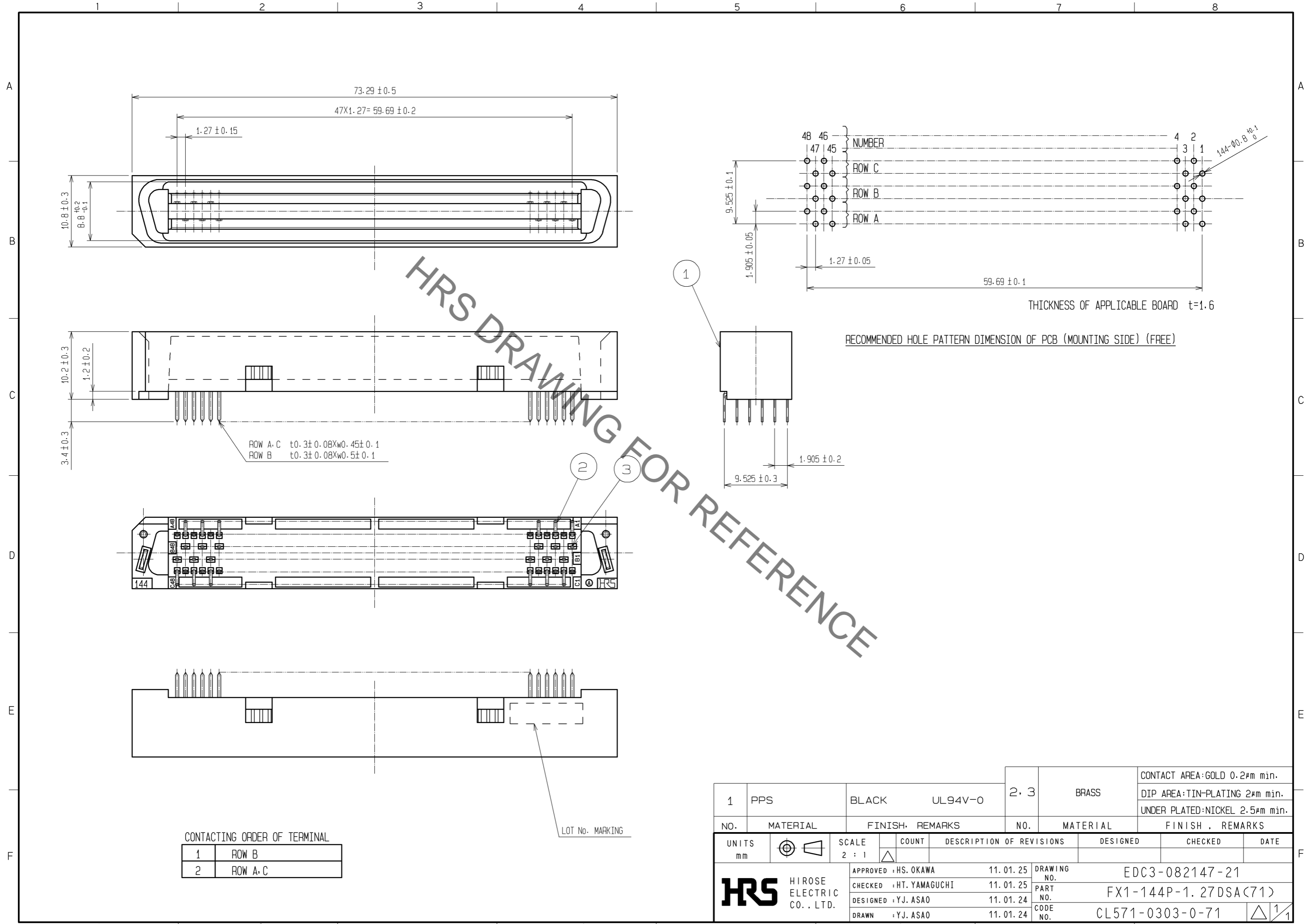


May.1.2023 Copyright 2023 HIROSE ELECTRIC CO., LTD. All Rights Reserved.
In case of consideration for using Automotive equipment / device which demand high reliability, kindly contact our sales window correspondents.



1	PPS	BLACK	UL94V-0	2, 3	BRASS	CONTACT AREA: GOLD 0.2 μ m min. DIP AREA: TIN-PLATING 2 μ m min. UNDER PLATED: NICKEL 2.5 μ m min.		
NO.	MATERIAL	FINISH	REMARKS	NO.	MATERIAL	FINISH, REMARKS		
UNITS		SCALE	COUNT	DESCRIPTION OF REVISIONS		DESIGNED	CHECKED	DATE
mm		2 : 1	Δ					
HRS HIROSE ELECTRIC CO., LTD.		APPROVED : HS. OKAWA	11.01.25	DRAWING NO. EDC3-082147-21				
		CHECKED : HT. YAMAGUCHI	11.01.25	PART NO. FX1-144P-1.27DSA(71)				
		DESIGNED : YJ. ASAO	11.01.24	CODE NO. CL571-0303-0-71				
		DRAWN : YJ. ASAO	11.01.24					