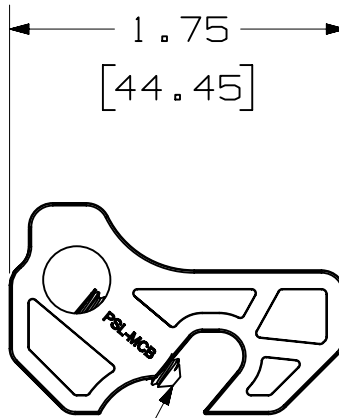
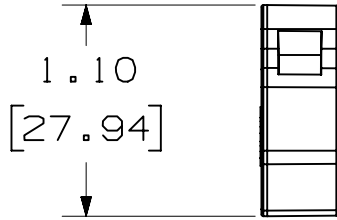
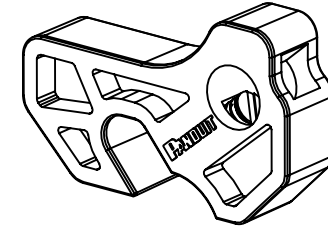
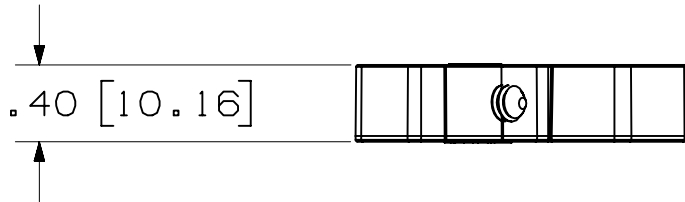


THIS COPY IS PROVIDED ON A RESTRICTED BASIS AND IS NOT TO BE USED IN ANY WAY DETRIMENTAL TO THE INTERESTS OF PANDUIT CORP.

PART NUMBER	PACKAGE QTY.
PSL-MCB	1
PSL-MCB-V	5



SEE NOTE 2



NOTES:

- [] DENOTE MILLIMETERS
- SET SCREW IS 18-8 STAINLESS STEEL
- OPERATING TEMPERATURE -40°F (-40°C) TO 250°F (121°C)
- EXCELLENT CHEMICAL RESISTANCE TO THE FOLLOWING;
SULFURIC ACID, HYDROCHLORIC ACID, SODIUM HYDROXIDE, METHYL ETHYL KETON, ACETONE, 1,1,1 TRICHLOROETHANE, METHANOL, IPA, ASTM #3 OIL, SAE 20 OIL, ALCONOX, TOLUENE, MINERAL SPIRITS, GLACIAL ACETIC ACID, DIESEL FULE, HEPTANE, CELLOSOLVE ACETATE, AMMONIA, TURPENTINE, KEROSENE, WATER, AND GASOLINE
- FOR USE INDOOR AND OUTDOOR
- MAX SWITCH HANDLE WIDTH: .295 [7.5]

CAD FILENAME/LAYERS 100919AM_DC_C10905/01B

PANDUIT CORP. TINLEY PARK, ILLINOIS

PSL-MCB & PSL-MCB-V
MINIATURE CIRCUIT BREAKER LOCKOUT
CUSTOMER DRAWING

UNLESS OTHERWISE SPECIFIED,
DIMENSIONAL TOLERANCES ARE:
(.X) ± .1 (.XXX) ± .015
(.XX) ± .03 ANGLES ± 5°

UNLESS OTHERWISE SPECIFIED,
ALL DIMENSIONS ARE GIVEN
IN INCHES, THIRD ANGLE PROJECTION.

REV	DATE	BY	CHK	DESCRIPTION	ECN	R	CUST	SUP
01	6/14/13	JHACMSAD		ADDED NEW TABLE AND PART NUMBER TO TITLE BLOCK	GAECN00938			
00	4/28/11	JHACMSAD		DRAWING RELEASE	6374			

DRAWN BY
JHAC
DATE
04/28/11
CHK'D
MSAD

MAT'L;
RED
33% GLASS-FILLED
NYLON

SCALE 1 : 1
DRAWING NO.
C10905
DWG
A
SIZE