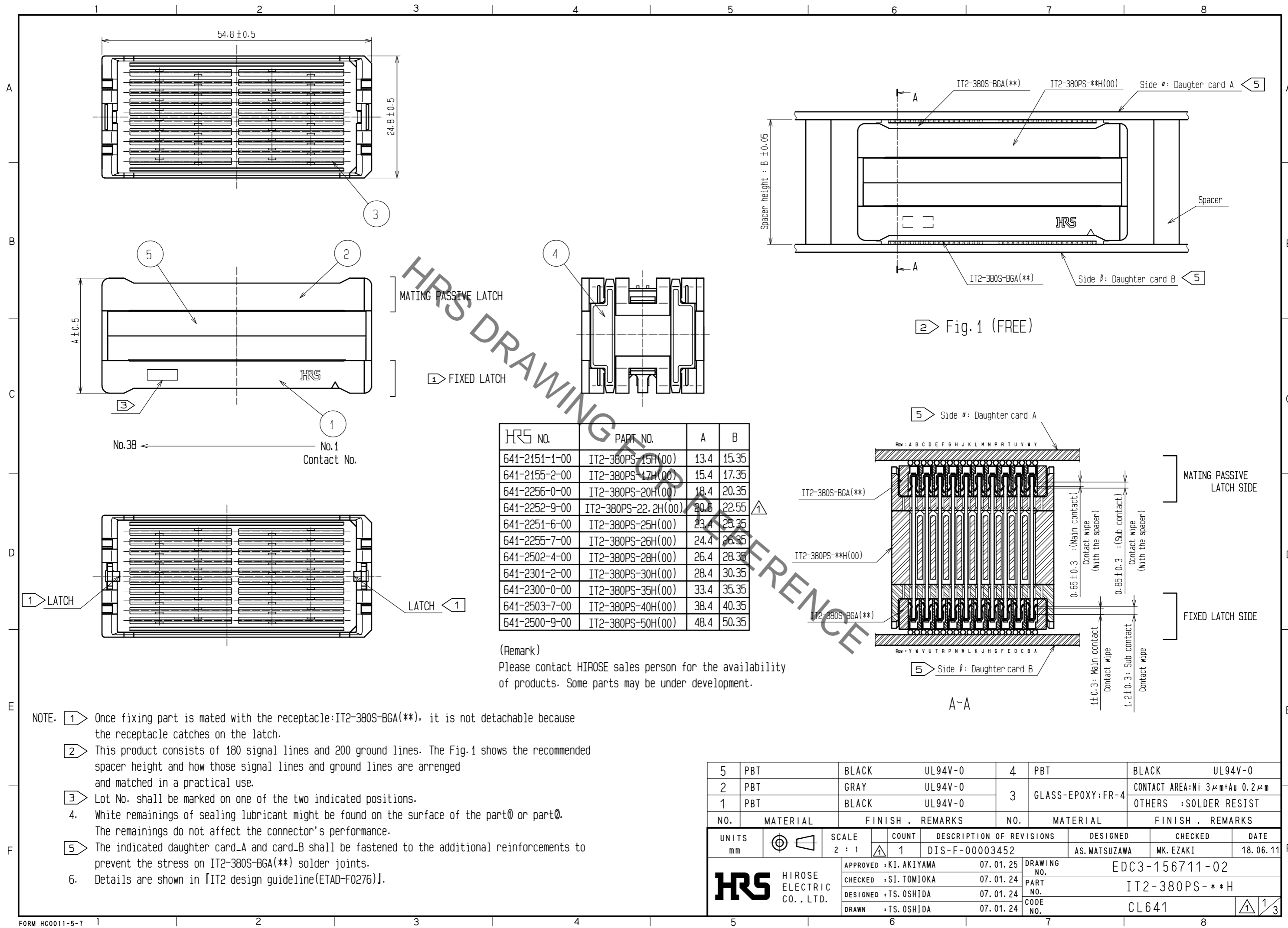


May.1.2023 Copyright 2023 HIROSE ELECTRIC CO., LTD. All Rights Reserved.
In case of consideration for using Automotive equipment / device which demand high reliability, kindly contact our sales window correspondents.



HRS DRAWING FOR REFERENCE

HRS NO.	PART NO.	A	B
641-2151-1-00	IT2-380PS-15H(00)	13.4	15.35
641-2155-2-00	IT2-380PS-17H(00)	15.4	17.35
641-2256-0-00	IT2-380PS-20H(00)	18.4	20.35
641-2252-9-00	IT2-380PS-22.2H(00)	20.6	22.55
641-2251-6-00	IT2-380PS-25H(00)	23.4	25.35
641-2255-7-00	IT2-380PS-26H(00)	24.4	26.35
641-2502-4-00	IT2-380PS-28H(00)	26.4	28.35
641-2301-2-00	IT2-380PS-30H(00)	28.4	30.35
641-2300-0-00	IT2-380PS-35H(00)	33.4	35.35
641-2503-7-00	IT2-380PS-40H(00)	38.4	40.35
641-2500-9-00	IT2-380PS-50H(00)	48.4	50.35

(Remark)
Please contact HIROSE sales person for the availability of products. Some parts may be under development.

- NOTE.
- ① Once fixing part is mated with the receptacle:IT2-380S-BGA(**), it is not detachable because the receptacle catches on the latch.
 - ② This product consists of 180 signal lines and 200 ground lines. The Fig.1 shows the recommended spacer height and how those signal lines and ground lines are arranged and matched in a practical use.
 - ③ Lot No. shall be marked on one of the two indicated positions.
 - 4. White remainings of sealing lubricant might be found on the surface of the part④ or part⑤. The remainings do not affect the connector's performance.
 - ⑤ The indicated daughter card-A and card-B shall be fastened to the additional reinforcements to prevent the stress on IT2-380S-BGA(**) solder joints.
 - 6. Details are shown in [IT2 design guideline(ETAD-F0276)].

NO.	MATERIAL	FINISH	REMARKS	NO.	MATERIAL	FINISH	REMARKS
5	PBT	BLACK	UL94V-0	4	PBT	BLACK	UL94V-0
2	PBT	GRAY	UL94V-0	3	GLASS-EPOXY:FR-4	CONTACT AREA:Ni 3μm+Au 0.2μm	
1	PBT	BLACK	UL94V-0			OTHERS :SOLDER RESIST	

UNITS	SCALE	COUNT	DESCRIPTION OF REVISIONS	DESIGNED	CHECKED	DATE
mm	2 : 1	1	DIS-F-00003452	AS. MATSUZAWA	MK. EZAKI	18.06.11

APPROVED	DATE	DRAWING NO.
•KI. AKIYAMA	07.01.25	EDC3-156711-02
CHECKED	DATE	PART NO.
•SI. TOMIOKA	07.01.24	IT2-380PS-**-H
DESIGNED	DATE	CODE NO.
•TS. OSHIDA	07.01.24	CL641
DRAWN	DATE	
•TS. OSHIDA	07.01.24	

May.1.2023 Copyright 2023 HIROSE ELECTRIC CO., LTD. All Rights Reserved.
 In case of consideration for using Automotive equipment / device which demand high reliability, kindly contact our sales window correspondents.

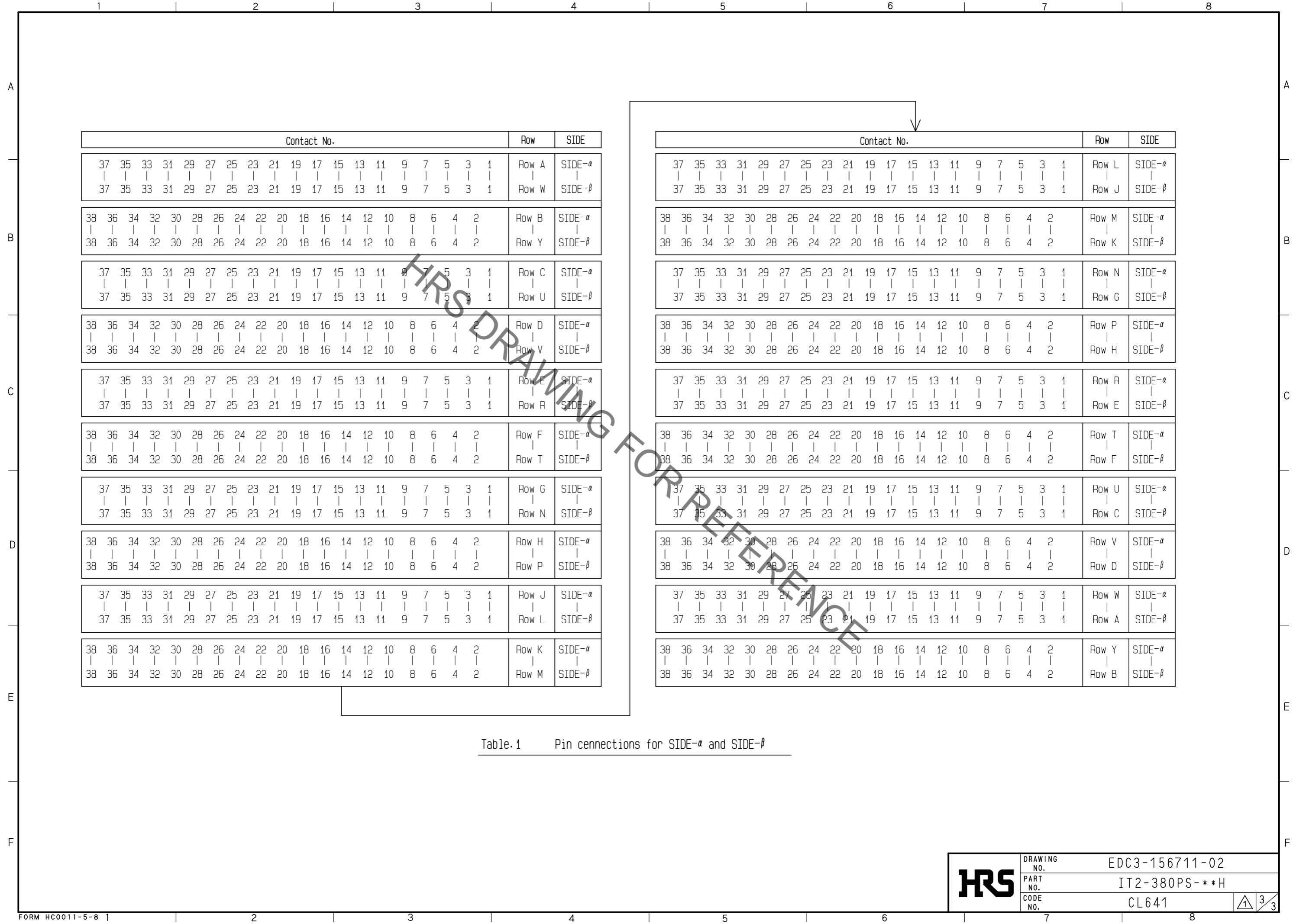


Table.1 Pin connexions for SIDE- α and SIDE- β

HRS	DRAWING NO.	EDC3-156711-02
	PART NO.	IT2-380PS-***H
	CODE NO.	CL641
		3/3