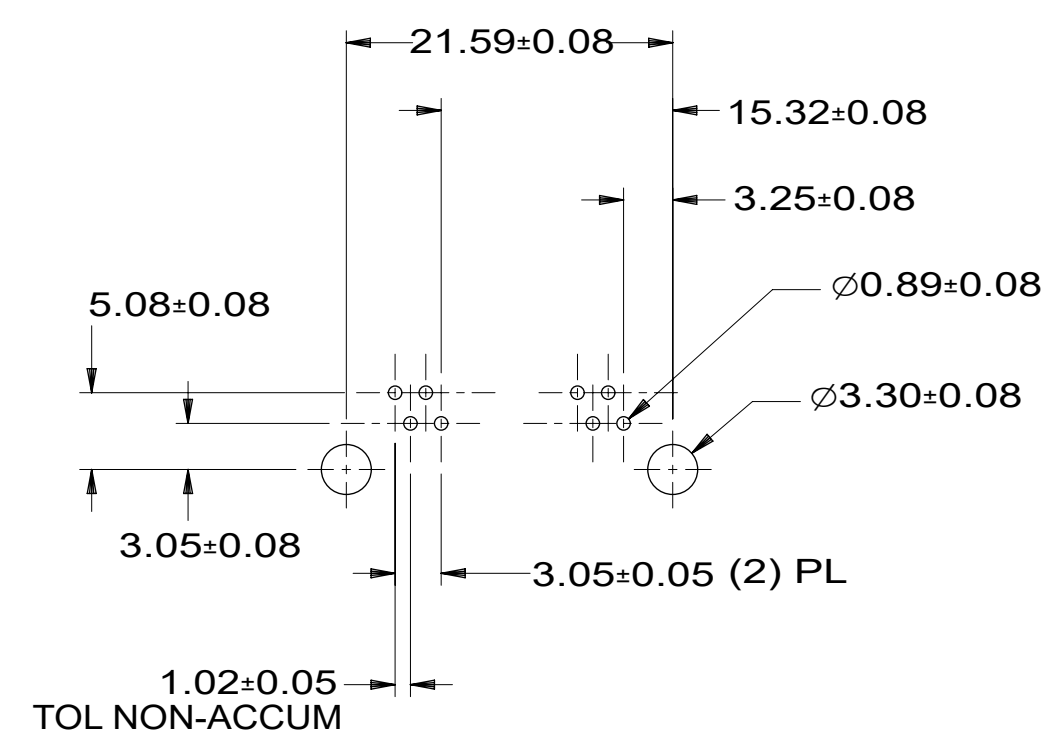
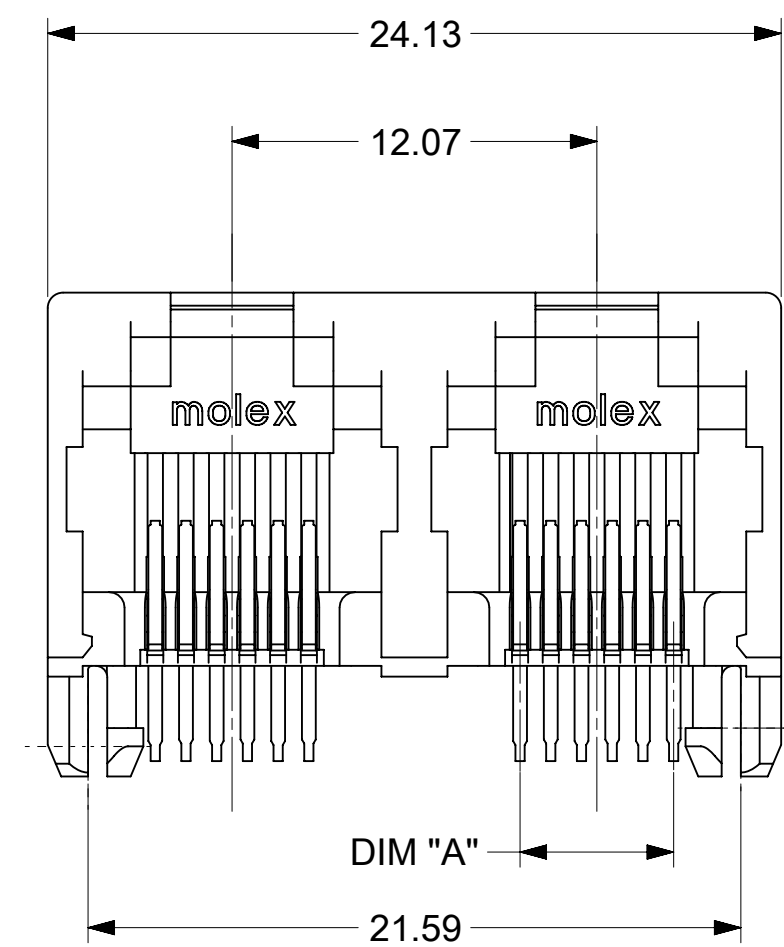
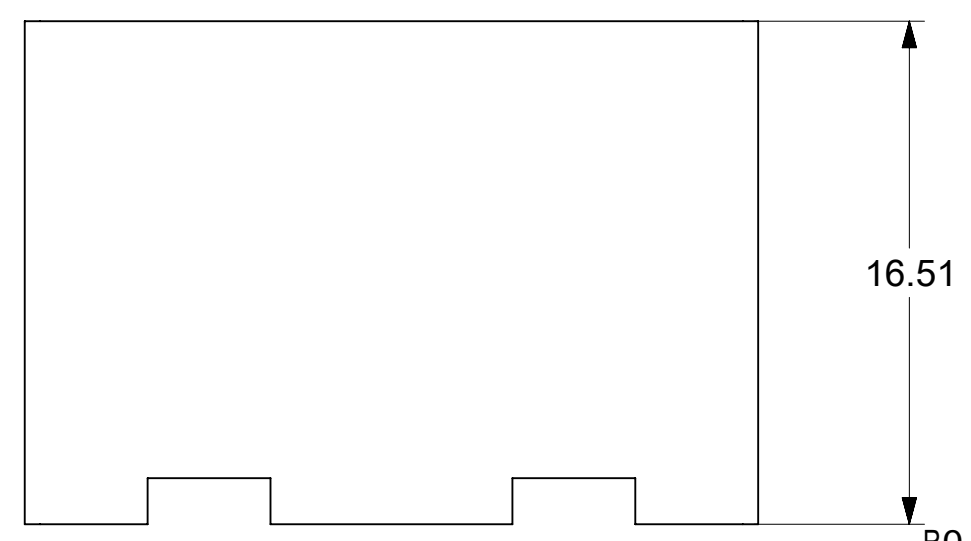


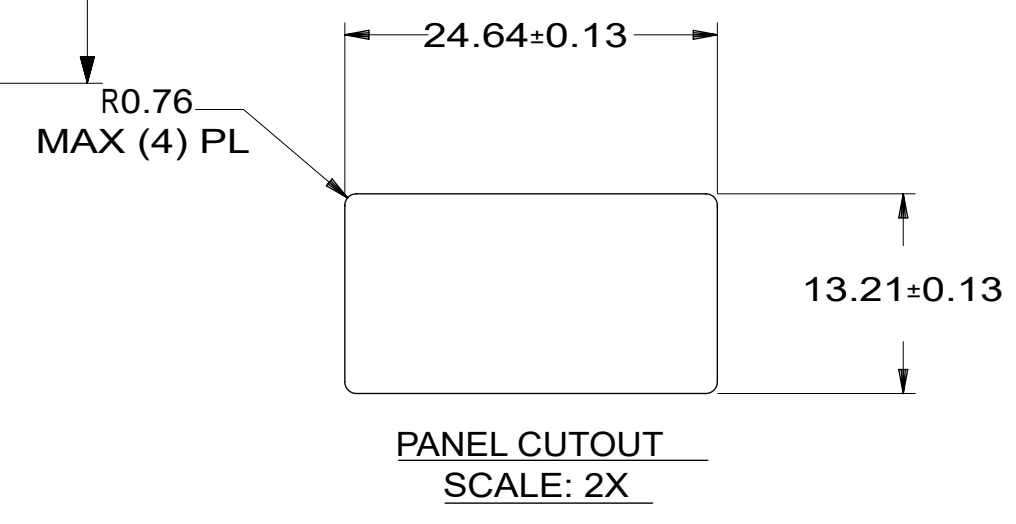
P.C. BOARD LAYOUT
6 LOADED 6 ASSEMBLY
COMPONENT SIDE OF BOARD
SCALE: 2X



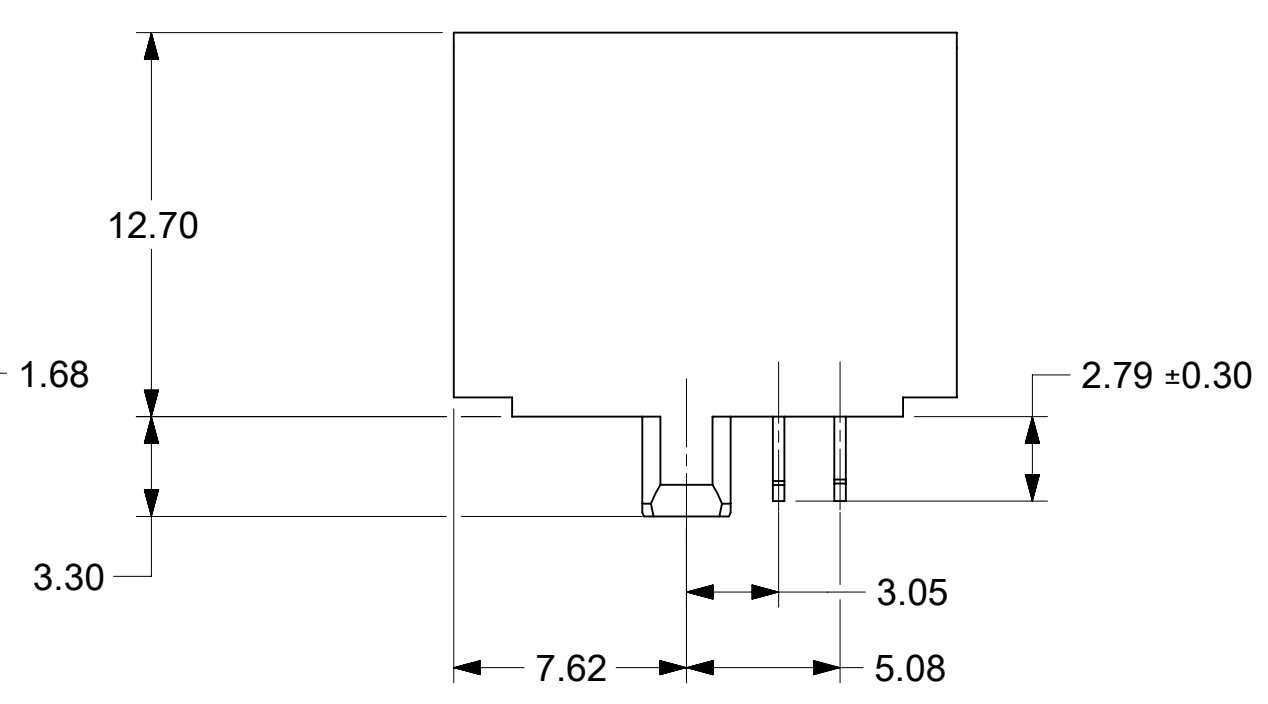
P.C. BOARD LAYOUT
6 LOADED 4 ASSEMBLY
COMPONENT SIDE OF BOARD
SCALE: 2X



6 LOADED 4
ASSEMBLY SHOWN



PANEL CUTOUT
SCALE: 2X



- NOTES:
- MATERIAL:
HOUSING: NYLON(PA), GLASS FILLED, UL94V-0, COLOR: SEE CHART
TERMINALS: PHOSPHOR BRONZE, 0.38 mm THICK
 - FINISH:
TERMINALS:
SELECT GOLD IN CONTACT AREA: 1.27 MICROMETERS MIN.,
*SELECT TIN IN PC TAIL AREA: 2.54 MICROMETERS MIN.,
WITH OVERALL NICKEL UNDERPLATE: 1.27 MICROMETERS MIN.
*THE PRIMARY SHIPPING CARTON WILL BE LABELED "COMPLIANT TO RoHS DIRECTIVE 2002/95/EC AND ELV ANNEX II OF DIRECTIVE 2000/53/EC".
CARTONS WITHOUT THIS LABEL MAY CONTAIN PRODUCT WITH TIN-LEAD IN THE PC TAILS.
 - PRODUCT SPECIFICATION AND PROCESSING PARAMETERS: PS-43860-003.
 - PACKAGING SPECIFICATION:
CONNECTOR ASSEMBLIES PACKAGED IN EXTRUDED TUBES PER MOLEX PACKAGING SPECIFICATION PK-43685-005.
 - THIS PART CONFORMS TO CLASS B REQUIREMENTS OF COSMETIC SPECIFICATION PS-45499-002.
 - RECOMMENDED PCB THICKNESS: 1.57±0.13 mm.

MATERIAL NUMBER	CIRCUITS PER PORT	DIM "A"
438146621	6	5.08
438146421	4	3.05

FUNCTIONAL SYMBOLS		THIS DRAWING CONTAINS INFORMATION THAT IS PROPRIETARY TO MOLEX ELECTRONIC TECHNOLOGIES, LLC AND SHOULD NOT BE USED WITHOUT WRITTEN PERMISSION		CURRENT REV DESC:			
DIMENSION UNITS		SCALE		GENERAL TOLERANCES (UNLESS SPECIFIED)			
mm		4:1		ANGULAR TOL ± 0.5°		INVERTED DUAL PORT RIGHT ANGLE MODULAR JACK ASSEMBLY	
GENERAL TOLERANCES (UNLESS SPECIFIED)		CURRENT REV DESC:		4 PLACES ±		PRODUCT CUSTOMER DRAWING	
ANGULAR TOL ± 0.5°		EC NO: 706367		3 PLACES ±		DOCUMENT NUMBER	
DIVISIONAL SYMBOLS		DRWN: ME		2 PLACES ± 0.25		DOC TYPE	
4 PLACES ±		2018/11/23		1 PLACE ± 0.36		DOC PART	
3 PLACES ±		CHK'D: KLANG		0 PLACES ±		REVISION	
2 PLACES ±		2022/05/31		DRAFT WHERE APPLICABLE MUST REMAIN WITHIN DIMENSIONS		SD-43814-001	
1 PLACE ±		APPR: KLANG		THIRD ANGLE PROJECTION		PSD 001 F5	
0 PLACES ±		2022/05/31		DRAWING		MATERIAL NUMBER	
INITIAL REVISION:		2018/10/31		SERIES		CUSTOMER	
DRWN: RFC_PLMIMP		2000/11/22		C-SIZE		GENERAL MARKET	
APPR: JROBERTS		43814		SHEET NUMBER		1 OF 1	