



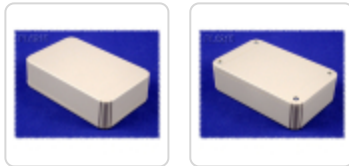
Quality Products. Service Excellence.

ABS Plastic Project Enclosures *RL Series*

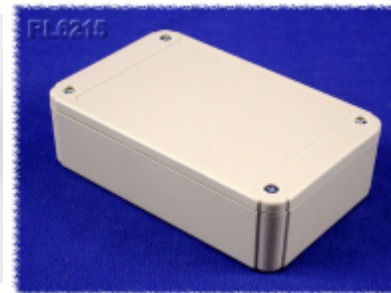
Shallow Lid

Key Features:

- Designed to house P.C. boards for hand-held use or wall mount.
- Molded in light grey or black general purpose ABS plastic with a light texture.
- Two part construction. Both halves include smooth recessed area for membrane, label or silkscreen (see chart below for recess size).
- P.C. board standoffs are molded into both halves of the enclosure (see photo tables for details).
- Designed to meet IP54.
- All sizes also available in a flanged lid version.
- Includes four M3 x 25mm self-tapping lid screws.
- Includes four M2.6 x 6mm self-tapping P.C. board screws.
- For replacement lid screws (quantity 50) order part number **SC520-50**.
- For replacement P.C. board screws (quantity 50) order part number **SC519-50**.



Photos:



Available in black or gray, and with or without mounting flanges. Includes lid and PC board screws.

Enclosures (No Wall Mounting Flanges)

Black Enclosure	Gray Enclosure	Length	Width	Depth (with lid)	Lid Recess Size	Bottom Recess Size	PCB Mounting Dim
RL6105BK	RL6105	3.15	2.36	1.18	2.13 x 2.05	2.13 x 2.05	2.52 x 1.18
RL6115BK	RL6115	3.15	2.36	1.57	2.13 x 2.05	2.13 x 2.05	2.52 x 1.18
RL6165BK	RL6165	4.13	2.56	1.18	3.11 x 2.24	3.11 x 2.24	3.5 x 1.38
RL6175BK	RL6175	4.13	2.56	1.57	3.11 x 2.24	3.11 x 2.24	3.5 x 1.38
RL6205BK	RL6205	4.92	3.15	0.98	3.78 x 2.76	3.78 x 2.76	4.21 x 1.57
RL6215BK	RL6215	4.92	3.15	1.38	3.78 x 2.76	3.78 x 2.76	4.21 x 1.57
RL6225BK	RL6225	4.92	3.15	1.97	3.78 x 2.76	3.78 x 2.76	4.21 x 1.57
RL6335BK	RL6335	4.92	3.94	2.36	3.78 x 3.46	3.78 x 3.46	4.17 x 2.56
RL6365BK	RL6365	4.92	3.94	3.54	3.78 x 3.46	3.78 x 3.46	4.17 x 2.56
RL6435BK	RL6435	5.91	3.94	2.36	4.72 x 3.54	4.72 x 3.54	5.20 x 2.36
RL6465BK	RL6465	5.91	3.94	3.54	4.72 x 3.54	4.72 x 3.54	5.20 x 2.36

Black Enclosure	Gray Enclosure	Length	Width	Depth (with lid)	Lid Recess Size	Bottom Recess Size	PCB Mounting Dim
RL6555BK	RL6555	6.89	4.92	2.76	5.59 x 4.53	5.59 x 4.53	6.06 x 2.76
RL6585BK	RL6585	6.89	4.92	3.94	5.59 x 4.53	5.59 x 4.41	6.06 x 2.76
RL6655BK	RL6655	7.87	5.91	2.76	6.50 x 5.31	6.50 x 5.31	7.01 x 3.94
RL6685BK	RL6685	7.87	5.91	3.94	6.50 x 5.31	6.50 x 5.31	7.01 x 3.94

Enclosures with Wall Mounting Flanges

Black Enclosure	Gray Enclosure	Length	Width	Depth (with lid)	Lid Recess Size	Bottom Recess Size	PCB Mounting Dim
RL6105-FBK	RL6105-F	3.15	2.36	1.18	2.13 x 2.05	2.13 x 2.05	2.52 x 1.18
RL6115-FBK	RL6115-F	3.15	2.36	1.57	2.13 x 2.05	2.13 x 2.05	2.52 x 1.18
RL6165-FBK	RL6165-F	4.13	2.56	1.18	3.11 x 2.24	3.11 x 2.24	3.5 x 1.38
RL6175-FBK	RL6175-F	4.13	2.56	1.57	3.11 x 2.24	3.11 x 2.24	3.5 x 1.38
RL6205-FBK	RL6205-F	4.92	3.15	0.98	3.78 x 2.76	3.78 x 2.76	4.21 x 1.57
RL6215-FBK	RL6215-F	4.92	3.15	1.38	3.78 x 2.76	3.78 x 2.76	4.21 x 1.57
RL6225-FBK	RL6225-F	4.92	3.15	1.97	3.78 x 2.76	3.78 x 2.76	4.21 x 1.57
RL6335-FBK	RL6335-F	4.92	3.94	2.36	3.78 x 3.46	3.78 x 3.46	4.17 x 2.56
RL6365-FBK	RL6365-F	4.92	3.94	3.54	3.78 x 3.46	3.78 x 3.46	4.17 x 2.56
RL6435-FBK	RL6435-F	5.91	3.94	2.36	4.72 x 3.54	4.72 x 3.54	5.20 x 2.36
RL6465-FBK	RL6465-F	5.91	3.94	3.54	4.72 x 3.54	4.72 x 3.54	5.20 x 2.36
RL6555-FBK	RL6555-F	6.89	4.92	2.76	5.59 x 4.53	5.59 x 4.53	6.06 x 2.76
RL6585-FBK	RL6585-F	6.89	4.92	3.94	5.59 x 4.53	5.59 x 4.41	6.06 x 2.76
RL6655-FBK	RL6655-F	7.87	5.91	2.76	6.50 x 5.31	6.50 x 5.31	7.01 x 3.94
RL6685-FBK	RL6685-F	7.87	5.91	3.94	6.50 x 5.31	6.50 x 5.31	7.01 x 3.94

Tags: shallow lid, ABS, plastic, PCB, board, black, flanged, project box

Data subject to change without notice

© 2023. Hammond Manufacturing Ltd. All rights reserved.