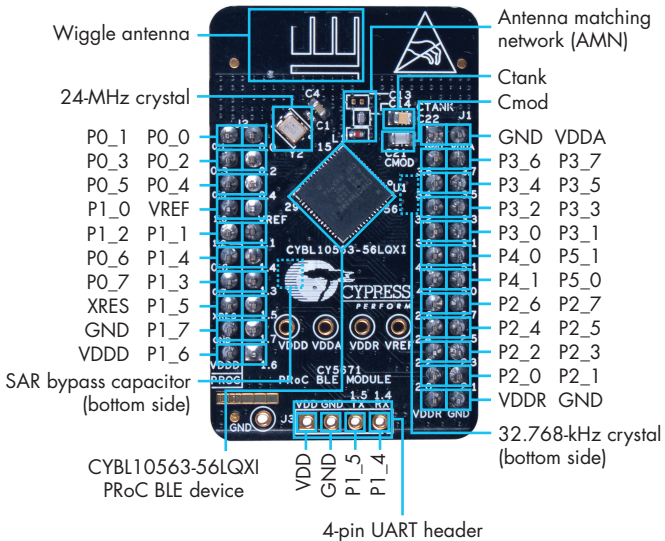


## CY5671 PRoC™ BLE MODULE

CY5671 PRoC™ BLE Module is a complete, certified solution to add BLE connectivity to any embedded system. The module features a PRoC BLE device (CYBL10563), two crystals, a PCB antenna, and other passives while providing access to all GPIOs of the device.

Visit [www.cypress.com/BLE](http://www.cypress.com/BLE) for more information on Cypress's BLE solutions.

PRoC BLE is a single-chip solution with a 48-MHz ARM® Cortex®-M0 CPU, BLE radio, CapSense® technology for touch sensing, two serial communication blocks (SCBs), a 12-bit ADC, four Timer/Counter/PWMs, four additional PWMs, I<sup>2</sup>S for digital audio, and segment LCD direct-drive capability.



**Fig-1: Pinout Description for PRoC BLE Module**

Note: To apply power to the module, use the VDD pin (1.9 V - 5.0 V) and GND pin.

# CY5671 PROc™ BLE MODULE

## STANDALONE USE WITH PSoC CREATOR™ IDE AND CY8CKIT-002 MINIPROG3

**Step 1:** Select the 5-pin connector setting in PSoC Creator or PSoC Programmer.

**Step 2:** You can use 0.1" male headers (not included) or jumper wires.



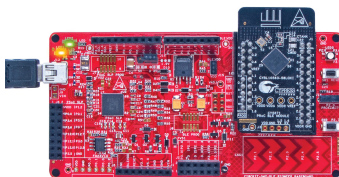
Pin Mapping	
CY8CKIT-002	CY5671
VTARG	VDD
GND	GND
RES	XRES
SCLK	PO_7
SDAT	PO_6

**Fig-2: Programming and Debugging with CY8CKIT-002**

## USING THE PROc BLE MODULE WITH THE CY8CKIT-042-BLE PIONEER KIT

**Step 1:** Plug the module on the CY8CKIT-042-BLE Pioneer Kit baseboard.

**Step 2:** Create your design in PSoC Creator IDE and use the BLE Pioneer Kit to program and debug.



**Fig-3: Programming and Debugging with CY8CKIT-042 BLE Pioneer Baseboard**

CY5671 is qualified for the Bluetooth 4.1 specification. The module, along with the CY8CKIT-042 BLE Pioneer Baseboard, has regulatory approval (for development purpose only) for the 2.4-GHz unlicensed frequency range in countries including USA (FCC), Canada (IC), Europe (CE) and Japan (JRF/TELEC).

Additional regulatory certification will be required to integrate the module into an end product. Contact [support@cypress.com](mailto:support@cypress.com) for details.

For more information about this kit, visit [www.cypress.com/CY5671](http://www.cypress.com/CY5671)

CY5671

Manufactured by Cypress Semiconductor.



005-100920

Contains Model: CY5671

FCC ID: WAP-CY5671

IC: 7922A-CY5671

