



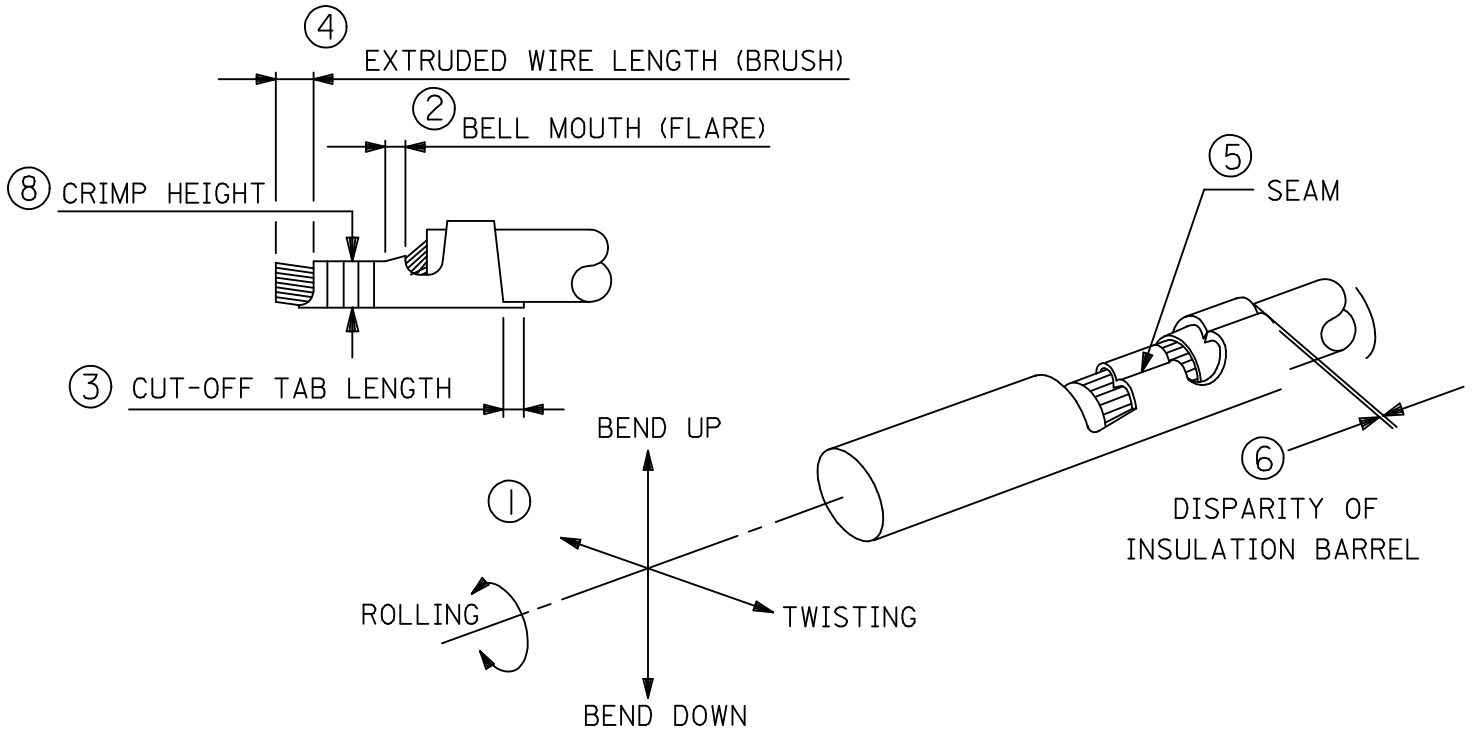
APPLICATION TOOLING FINEADJUST APPLICATOR SPECIFICATION SHEET

A. SCOPE

THIS STANDARD SPECIFIES THE DIMENSIONS AFTER CRIMPING OF THE TERMINALS UNDERMENTIONED.

TERMINAL SERIES	WIRE SIZE	INSULATION DIAMETER		STRIP LENGTH	
	AWG	ENGLISH	(METRIC)	ENGLISH	(METRIC)
83000-9502	28 -	.020 - .039	(0.50 - 1.00)	.051 - .063	(1.30 - 1.60)
83000-9503	28 -	.020 - .039	(0.50 - 1.00)	.051 - .063	(1.30 - 1.60)
83000-9502	26 -	.035 - .040	(0.89 - 1.02)	.051 - .063	(1.30 - 1.60)
83000-9503	26 -	.035 - .040	(0.89 - 1.02)	.051 - .063	(1.30 - 1.60)
	-	-	-	-	-
	-	-	-	-	-
	-	-	-	-	-

B. DEFINITION (TERMS)



MFG. SH. REV.	D	L.T.R.	REVISIONS	UAT2006-1384 6/21/2006 EPB 26AWG. SPEC. WAS .56-.61 MM.	DIMENSIONS SHOWN (METRIC) INCH	▽ =	▼ =	REVISE ONLY ON CAD SYSTEM		
				UNLESS OTHERWISE SPECIFIED TOLERANCES: ANGULAR ± 1/2°	TITLE SPECIFICATION SHEET FINEADJUST APPLICATOR					
				DRAFT WHERE APPLICABLE MUST REMAIN WITHIN DIMENSIONS	INCH METRIC	MOLEX INCORPORATED			SHEET NO.	DATE
				DRWG. BY: KDP CHK'D. BY: KDP	3 PLACE ± --- ---	LISLE, ILL. 60532 U.S.A.			1 of 4	98/03/03
				APP'D. BY: S.W. SCALE: --:--	2 PLACE ± --- ± 0.13	PART NO.				
					1 PLACE --- ± 0.25	638207800			638207800	
						FILE NAME 638207800 S80			THIS DRAWING CONTAINS INFORMATION THAT IS PROPRIETARY TO MOLEX INC. AND SHOULD NOT BE USED WITHOUT WRITTEN PERMISSION.	
									DIV. AT	SIZE A

A

B

C

D

F. BILL OF MATERIAL

TOOLING INFORMATION



ITEM	ORDER NO.	SIZE	ENG. NO.	DESCRIPTION	REQ'D
1	638207801	B	63820-7801	Conductor Punch	1
2	634450821	B	63445-0821	Combination Anvil	1
3	638207803	B	63820-7803	Insulation Punch	1
5	634430003	B	63443-0003	Cut-Off Plunger	1
6	634430012	B	63443-0012	Front Plunger Retainer	1
70	638207870		63820-7870	ToolKit(All Above Items)	0

APPLICATOR ASSEMBLY - PARTS LIST

ITEM	ORDER NO.	SIZE	ENG. NO.	DESCRIPTION	REQ'D
10	11-40-4039	B	8302-5	Front Striker	1
11	634430021	B	63443-0021	LOWER TOOLING KEY	1
12	11-24-1067	B	4996-4	Cut-Off Plunger Spring	1
13	11-18-4083	B	60707-8	Front Cover	1
14	634436001	B	63443-6001	Rear Cover	1
15	634432001	B	634432001	ANVIL MOUNT	1
16	634434025	B	634434025	Wire Stop	1
18	634430009	B	63443-0009	SCRAP CHUTE	1

FRAME ASSEMBLY - PARTS LIST

ITEM	ORDER NO.	SIZE	ENG. NO.	DESCRIPTION	REQ'D
19	638000300	-	63800-0300	FINEADJUST FRAME	1
20	638207820	B	63820-7820	FEED CAM-SPECIAL	1

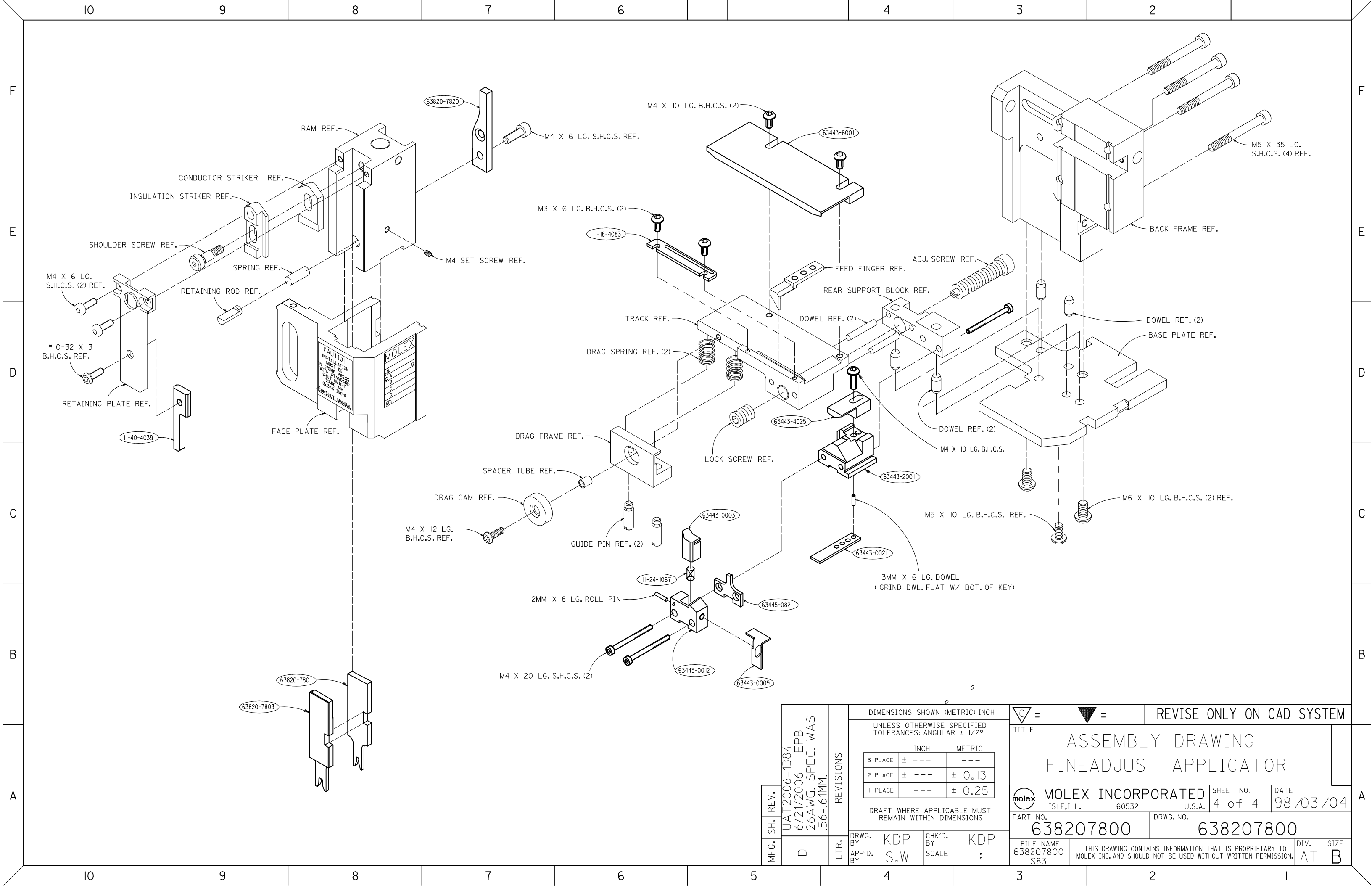
MFG. SH. REV.	D	L.T.R.	REVISIONS	DIMENSIONS SHOWN (METRIC) INCH		UNLESS OTHERWISE SPECIFIED TOLERANCES: ANGULAR $\pm 1/2^\circ$		 =  = REVISE ONLY ON CAD SYSTEM											
				<table border="1"> <thead> <tr> <th></th> <th>INCH</th> <th>METRIC</th> </tr> </thead> <tbody> <tr> <td>3 PLACE</td> <td>\pm ---</td> <td>---</td> </tr> <tr> <td>2 PLACE</td> <td>\pm ---</td> <td>± 0.13</td> </tr> <tr> <td>1 PLACE</td> <td>---</td> <td>± 0.25</td> </tr> </tbody> </table>			INCH	METRIC	3 PLACE	\pm ---	---	2 PLACE	\pm ---	± 0.13	1 PLACE	---	± 0.25	DRAFT WHERE APPLICABLE MUST REMAIN WITHIN DIMENSIONS	
	INCH	METRIC																	
3 PLACE	\pm ---	---																	
2 PLACE	\pm ---	± 0.13																	
1 PLACE	---	± 0.25																	
UAT2006-1384 6/21/2006 EPB 26AWG. SPEC. WAS .56-.61 MM.				DRWG. BY KDP APP'D. BY S.W.		CHK'D. BY KDP SCALE - : -		MOLEX INCORPORATED LISLE, ILL. 60532 U.S.A.		SHEET NO. 3 of 4 DATE 98/03/04									
				PART NO. 638207800		DRWG. NO. 638207800		FILE NAME 638207800 S82		THIS DRAWING CONTAINS INFORMATION THAT IS PROPRIETARY TO MOLEX INC. AND SHOULD NOT BE USED WITHOUT WRITTEN PERMISSION.									
								DIV. AT		SIZE A									

A

B

C

D



MFG. SH. REV. UAT2006-1384 6/21/2006 EPB 26AWG. SPEC. WAS .56-.61MM.	LTR. D	REVISIONS	DIMENSIONS SHOWN (METRIC) INCH		∇ = \blacktriangledown = REVISE ONLY ON CAD SYSTEM TITLE ASSEMBLY DRAWING FINEADJUST APPLICATOR													
			UNLESS OTHERWISE SPECIFIED TOLERANCES: ANGULAR $\pm 1/2^\circ$															
			<table border="1"> <thead> <tr> <th></th> <th>INCH</th> <th>METRIC</th> </tr> </thead> <tbody> <tr> <td>3 PLACE</td> <td>\pm ---</td> <td>---</td> </tr> <tr> <td>2 PLACE</td> <td>\pm ---</td> <td>± 0.13</td> </tr> <tr> <td>1 PLACE</td> <td>---</td> <td>± 0.25</td> </tr> </tbody> </table>			INCH	METRIC	3 PLACE	\pm ---	---	2 PLACE	\pm ---	± 0.13	1 PLACE	---	± 0.25	SHEET NO. 4 of 4	DATE 98/03/04
	INCH	METRIC																
3 PLACE	\pm ---	---																
2 PLACE	\pm ---	± 0.13																
1 PLACE	---	± 0.25																
DRAFT WHERE APPLICABLE MUST REMAIN WITHIN DIMENSIONS			PART NO. 638207800		DRWG. NO. 638207800													
DRWG. BY: KDP APP'D. BY: S.W.			CHK'D. BY: KDP SCALE: - : -		FILE NAME 638207800 S83													
THIS DRAWING CONTAINS INFORMATION THAT IS PROPRIETARY TO MOLEX INC. AND SHOULD NOT BE USED WITHOUT WRITTEN PERMISSION.																		
					DIV. AT SIZE B													