



Inscription plate for illuminated pushbutton, round, milky with black font, with graphic symbol: Increase, Plus

| | |
|---|-----------------------------|
| product brand name | SIRIUS ACT |
| product designation | Insert label |
| product type designation | 3SU1 |
| General technical data | |
| shock resistance for railway applications according to EN 61373 | Category 1, Class B |
| vibration resistance for railway applications according to EN 61373 | Category 1, Class B |
| Substance Prohibitance (Date) | 10/01/2014 |
| Ambient conditions | |
| ambient temperature | |
| • during operation | 70 ... -25 °C |
| • during storage and transport | 80 ... -40 °C |
| Accessories | |
| material of accessory | Plastic |
| fastening method of label | insert |
| marking of inscription plate | SYMBOL: INCREASE, PLUS |
| shape of inscription plate | Round |
| color of inscription plate | milky (plate); black (text) |
| printed ISO symbols | SYMBOL: INCREASE, PLUS |
| Certificates/ approvals | |
| General Product Approval | Declaration of Conformity |



[Confirmation](#)



Test Certificates

Marine / Shipping

[Type Test Certificates/Test Report](#)



other

Further information

Information- and Downloadcenter (Catalogs, Brochures,...)

<https://www.siemens.com/ic10>

Industry Mall (Online ordering system)

<https://mall.industry.siemens.com/mall/en/en/Catalog/product?mlfb=3SU1900-0AB71-0QX0>

Cax online generator

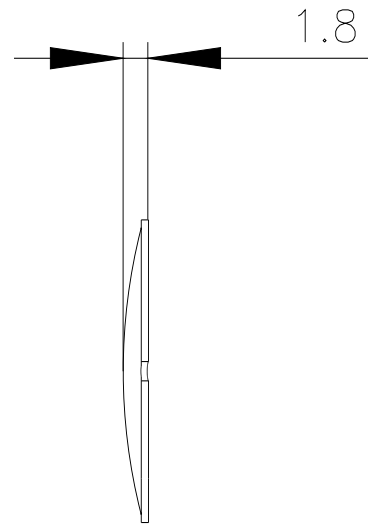
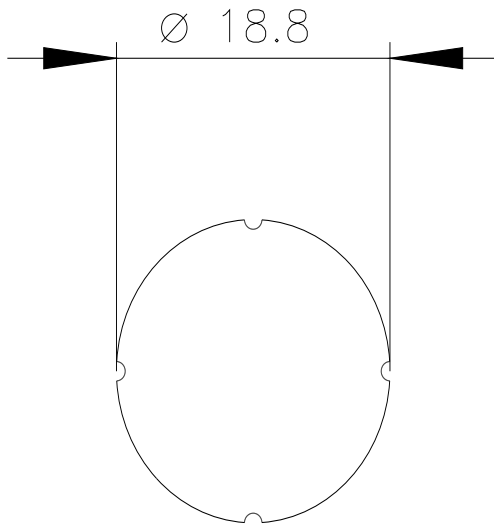
<http://support.automation.siemens.com/WW/CAXorder/default.aspx?lang=en&mlfb=3SU1900-0AB71-0QX0>

Service&Support (Manuals, Certificates, Characteristics, FAQs,...)

<https://support.industry.siemens.com/cs/ww/en/ps/3SU1900-0AB71-0QX0>

Image database (product images, 2D dimension drawings, 3D models, device circuit diagrams, EPLAN macros, ...)

http://www.automation.siemens.com/bilddb/cax_de.aspx?mlfb=3SU1900-0AB71-0QX0&lang=en



last modified:

3/29/2022 