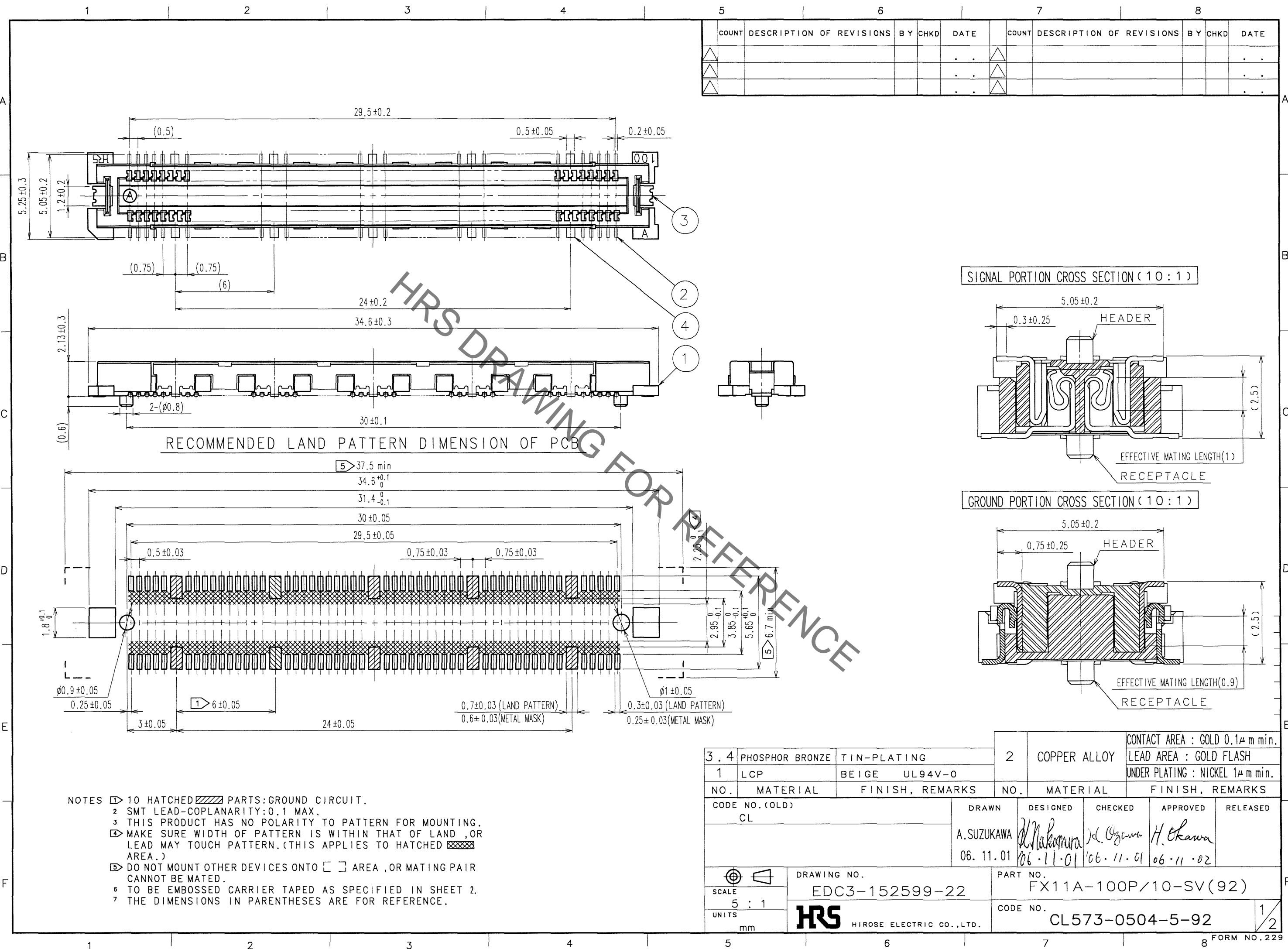


May.1.2023 Copyright 2023 HIROSE ELECTRIC CO., LTD. All Rights Reserved.  
In case of consideration for using Automotive equipment / device which demand high reliability, kindly contact our sales window correspondents.



COUNT	DESCRIPTION OF REVISIONS	BY	CHKD	DATE	COUNT	DESCRIPTION OF REVISIONS	BY	CHKD	DATE
△				..	△				..
△				..	△				..
△				..	△				..

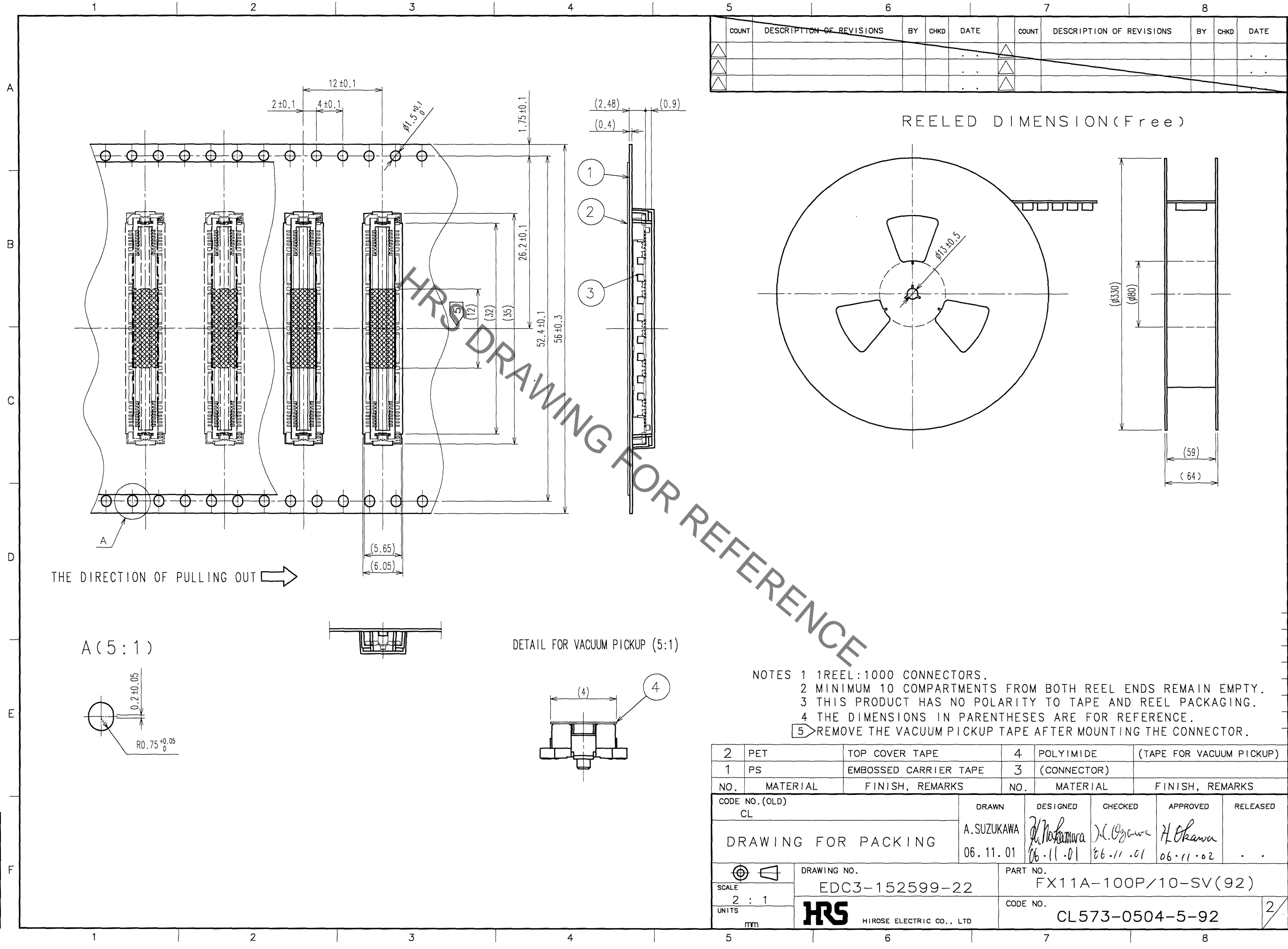
- NOTES
- 10 HATCHED PARTS: GROUND CIRCUIT.
  - SMT LEAD-COPLANARITY: 0.1 MAX.
  - THIS PRODUCT HAS NO POLARITY TO PATTERN FOR MOUNTING.
  - MAKE SURE WIDTH OF PATTERN IS WITHIN THAT OF LAND, OR LEAD MAY TOUCH PATTERN. (THIS APPLIES TO HATCHED AREA.)
  - DO NOT MOUNT OTHER DEVICES ONTO AREA, OR MATING PAIR CANNOT BE MATED.
  - TO BE EMBOSSED CARRIER TAPED AS SPECIFIED IN SHEET 2.
  - THE DIMENSIONS IN PARENTHESES ARE FOR REFERENCE.

3.4	PHOSPHOR BRONZE	TIN-PLATING	2	COPPER ALLOY	CONTACT AREA : GOLD 0.1μm min.		
1	LCP	BEIGE UL94V-0			LEAD AREA : GOLD FLASH		
					UNDER PLATING : NICKEL 1μm min.		
NO.	MATERIAL	FINISH, REMARKS	NO.	MATERIAL	FINISH, REMARKS		
CODE NO. (OLD) CL			DRAWN	DESIGNED	CHECKED	APPROVED	RELEASED
			A. SUZUKAWA	<i>Nakamura</i>	<i>Ogawa</i>	<i>H. Okawa</i>	
			06.11.01	06.11.01	06.11.01	06.11.02	
DRAWING NO. EDC3-152599-22			PART NO. FX11A-100P/10-SV(92)				
SCALE 5 : 1			CODE NO. CL573-0504-5-92				
UNITS mm			HIROSE ELECTRIC CO., LTD.				

TO  
PCK

May.1.2023 Copyright 2023 HIROSE ELECTRIC CO., LTD. All Rights Reserved.  
In case of consideration for using Automotive equipment / device which demand high reliability, kindly contact our sales window correspondents.

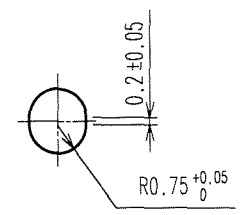
COUNT	DESCRIPTION OF REVISIONS	BY	CHKD	DATE	COUNT	DESCRIPTION OF REVISIONS	BY	CHKD	DATE



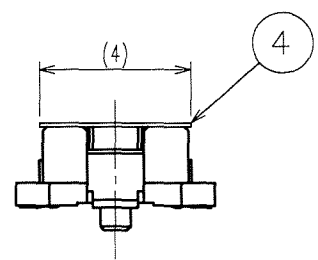
REELED DIMENSION (Free)

THE DIRECTION OF PULLING OUT →

A (5:1)



DETAIL FOR VACUUM PICKUP (5:1)



- NOTES
- 1 REEL:1000 CONNECTORS.
  - 2 MINIMUM 10 COMPARTMENTS FROM BOTH REEL ENDS REMAIN EMPTY.
  - 3 THIS PRODUCT HAS NO POLARITY TO TAPE AND REEL PACKAGING.
  - 4 THE DIMENSIONS IN PARENTHESES ARE FOR REFERENCE.
  - 5 REMOVE THE VACUUM PICKUP TAPE AFTER MOUNTING THE CONNECTOR.

2	PET	TOP COVER TAPE	4	POLYIMIDE	(TAPE FOR VACUUM PICKUP)
1	PS	EMBOSSED CARRIER TAPE	3	(CONNECTOR)	
NO.	MATERIAL	FINISH, REMARKS	NO.	MATERIAL	FINISH, REMARKS
CODE NO. (OLD)		DRAWN	DESIGNED	CHECKED	APPROVED
CL		A.SUZUKAWA	<i>N. Nakamura</i>	<i>K. Ozawa</i>	<i>H. Okawa</i>
DRAWING FOR PACKING		06.11.01	06.11.01	06.11.01	06.11.02
DRAWING NO.			PART NO.		
EDC3-152599-22			FX11A-100P/10-SV(92)		
SCALE			CODE NO.		
2 : 1			CL573-0504-5-92		
UNITS			2		
mm			HRS HIROSE ELECTRIC CO., LTD		

TO
PCK