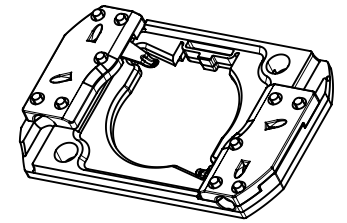
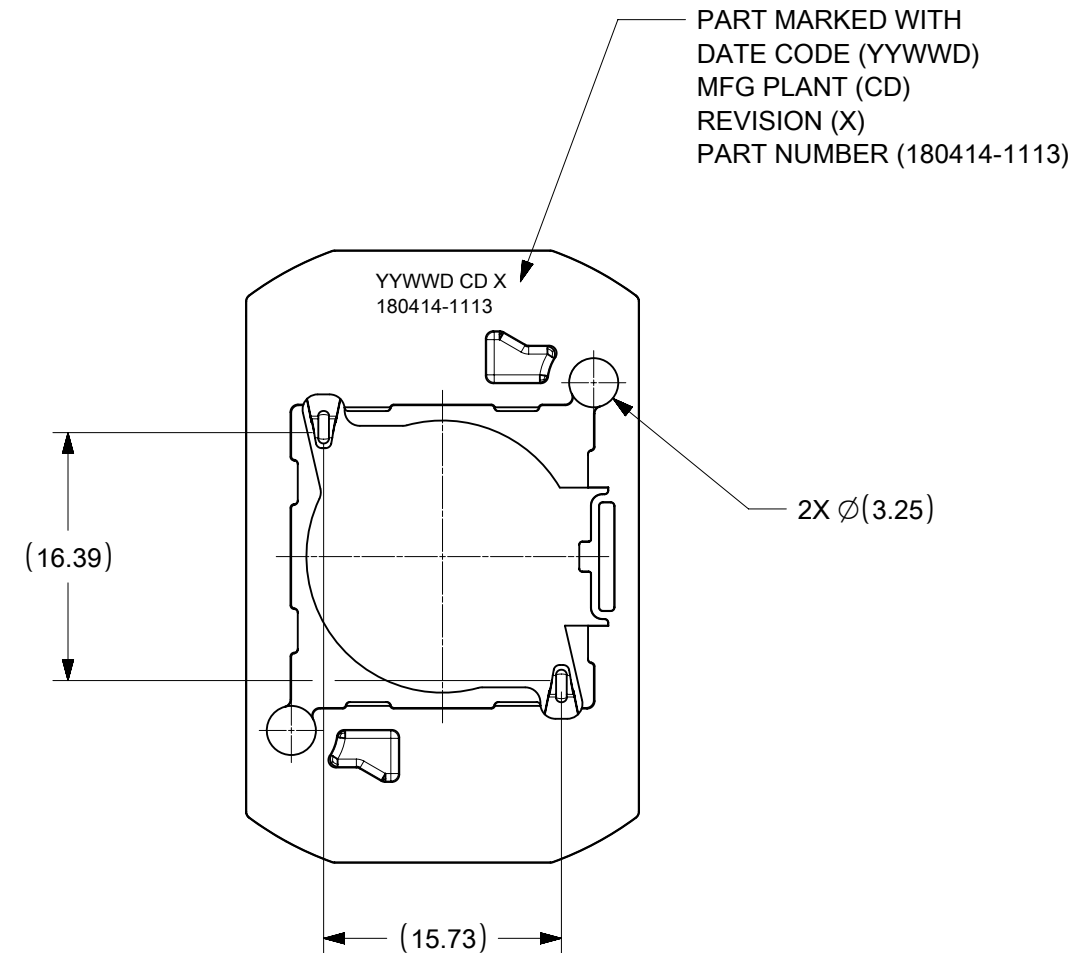
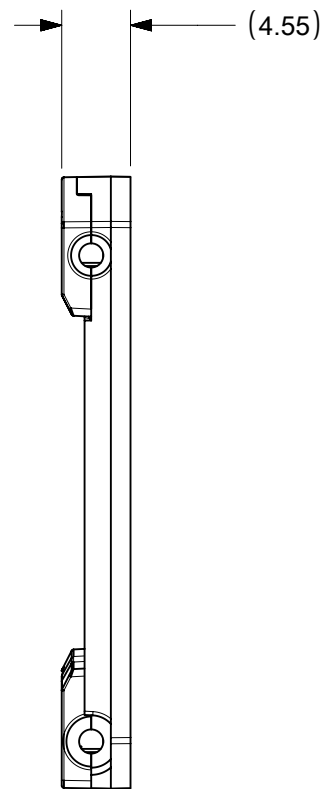
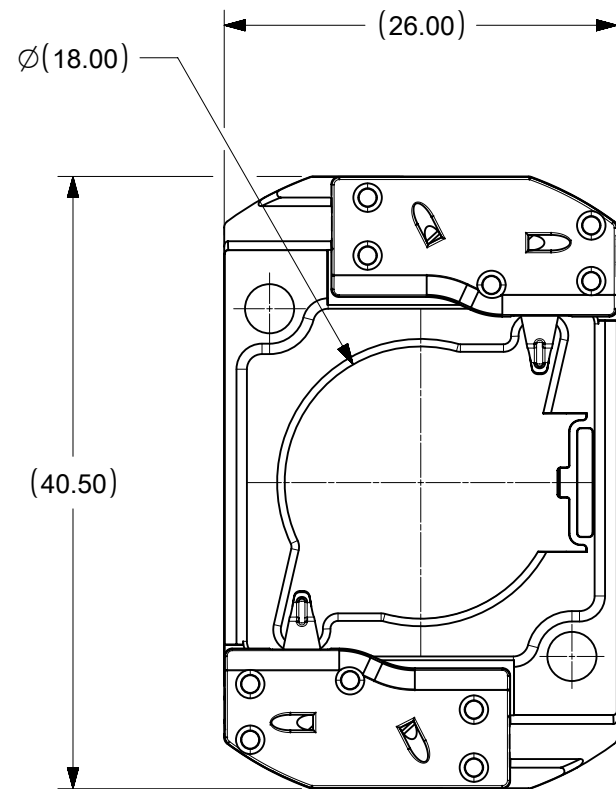


PART NUMBER	DESCRIPTION	POCKET DEPTH	HOUSING	TERMINAL	CAP
180414-1113	COB LED HOLDER ASSEMBLY	0.90	180413-1113	180155-0133	180154-0105



ISO VIEW A
SCALE 1:1

P/N 180414-1113 HOLDER ASSEMBLY (0.90 POCKET DEPTH)

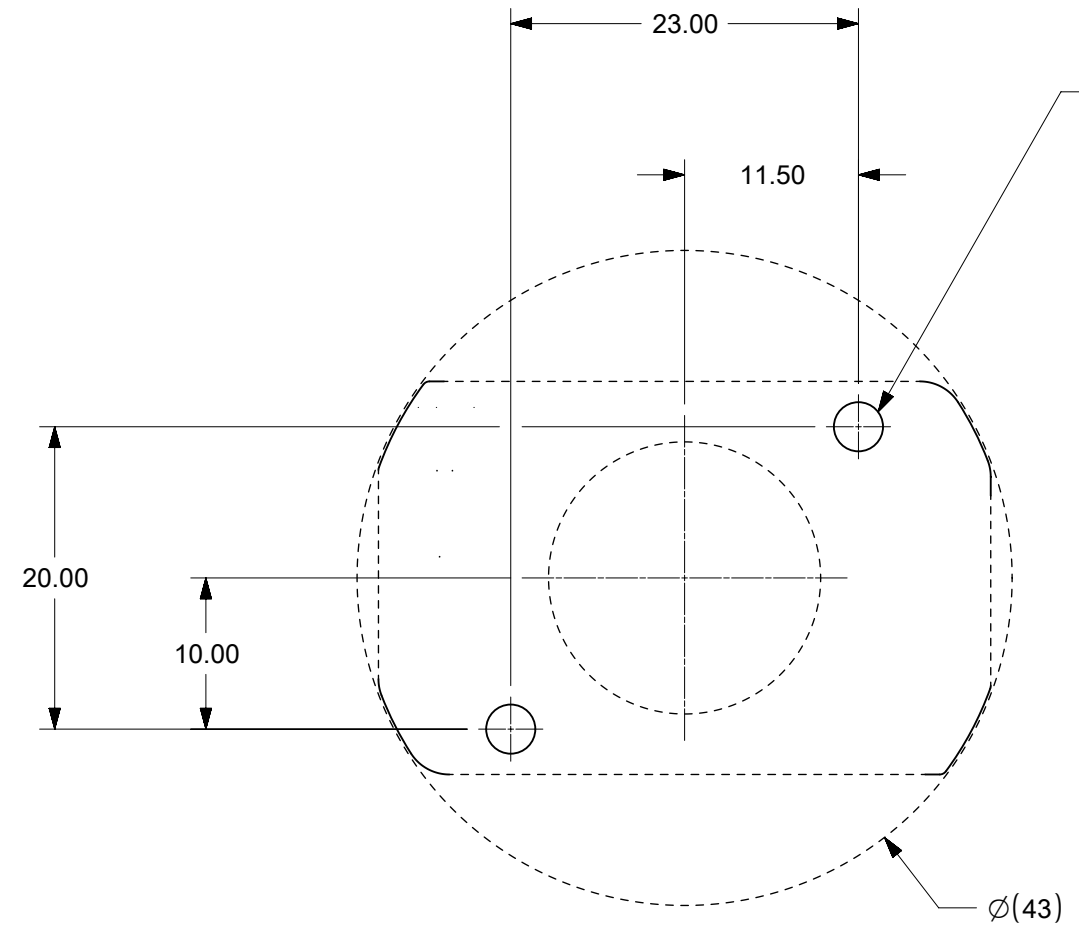


PART MARKED WITH
DATE CODE (YYWWD)
MFG PLANT (CD)
REVISION (X)
PART NUMBER (180414-1113)

NOTES:

1. MATERIALS: HOUSING AND CAPS: POLYESTER PBT GLASS FILLED; COLOR: WHITE; TERMINAL: COPPER ALLOY
2. FINISHES: TERMINAL CONTACT: SELECT GOLD OVER NICKEL
WIRE TRAP: SELECT TIN OVER NICKEL
3. PRODUCT SPECIFICATION: 180414-0000-PS
4. PACKAGING SPECIFICATION: PK-180419-006
5. UL:OLFB2 UL496 FILE NO. E345583
6. ELV AND ROHS COMPLIANT
7. FOR USE WITH: 19.0 MM X 19.0 MM COB LED
8. WIRE GAUGE: 18, 20, AND 22 AWG, SOLID OR STRANDED WITH TIN OVERCOAT. STRIP LENGTH 10MM +2.0/-0.0MM.
9. ALL DIMENSIONS IN PARENTHESES (XX.XX) ARE FOR REFERENCE ONLY

THIS DRAWING CONTAINS INFORMATION THAT IS PROPRIETARY TO MOLEX ELECTRONIC TECHNOLOGIES, LLC AND SHOULD NOT BE USED WITHOUT WRITTEN PERMISSION									
DIMENSION UNITS		SCALE		CURRENT REV DESC: OBSOLETE PART NO.					
mm		2:1		<p>molex</p> <p>COB LED HOLDER ASSEMBLY 19.0 MM X 19.0 MM SQUARE</p> <p>PRODUCT CUSTOMER DRAWING</p> <p>DOCUMENT NUMBER: SD-180414-113 DOC TYPE: PSD DOC PART: 001 REVISION: B5</p> <p>MATERIAL NUMBER: SEE CHART CUSTOMER: GENERAL MARKET SHEET NUMBER: 1 OF 4</p>					
GENERAL TOLERANCES (UNLESS SPECIFIED)									
	MM	INCH							
4 PLACES	±								
3 PLACES	±								
2 PLACES	± 0.13								
1 PLACE	± 0.25								
0 PLACES	±								
ANGULAR TOL ± 0.5°				EC NO: 632260		2020/01/31			
DRAFT WHERE APPLICABLE MUST REMAIN WITHIN DIMENSIONS				THIRD ANGLE PROJECTION		DRAWING		SERIES	
				B-SIZE		180414			



2X M3 OR 4-40 THREADED HOLES
 TORQUE: CERAMIC 0.2 N-M MIN TO 0.4 N-M MAX
 ALUMINUM 0.4 N-M MIN TO 0.8 N-M MAX

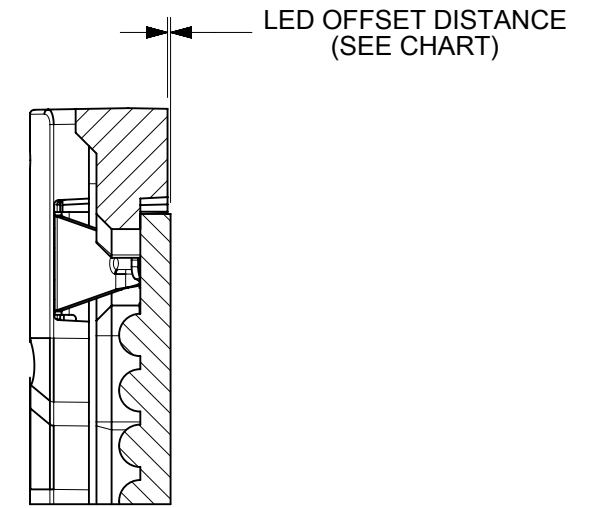
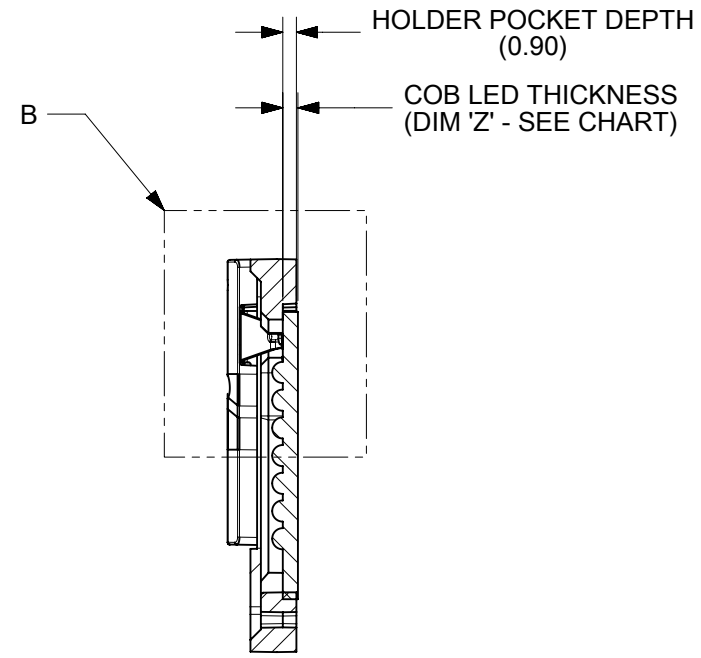
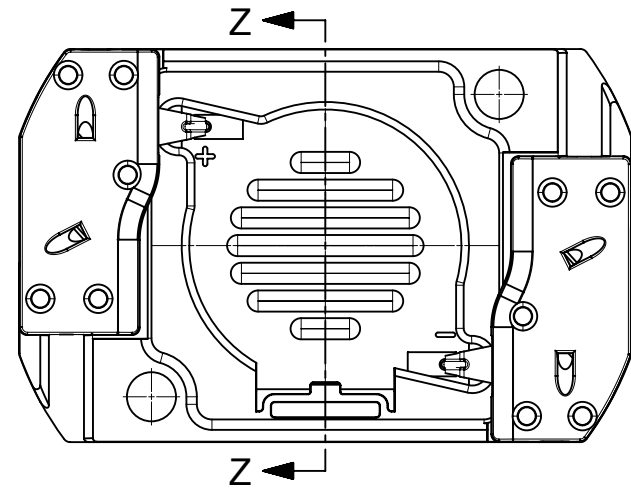
RECOMMENDED MOUNTING DIMENSIONIS

THIS DRAWING CONTAINS INFORMATION THAT IS PROPRIETARY TO MOLEX ELECTRONIC TECHNOLOGIES, LLC AND SHOULD NOT BE USED WITHOUT WRITTEN PERMISSION									
DIMENSION UNITS		SCALE		CURRENT REV DESC: OBSOLETED PART NO.				molex	
mm		2:1							
GENERAL TOLERANCES (UNLESS SPECIFIED)				EC NO: 632260		2020/01/31		COB LED HOLDER ASSEMBLY 19.0 MM X 19.0 MM SQUARE	
				DRWN: RPRABHUM		2020/02/28			
4 PLACES ±				CHK'D: GGA		2020/02/28		PRODUCT CUSTOMER DRAWING	
3 PLACES ±				APPR: GGA		2020/02/28			
2 PLACES ± 0.13 ±				INITIAL REVISION:				DOCUMENT NUMBER	
1 PLACE ± 0.25 ±				DRWN: MCOLE		2013/12/09			
0 PLACES ±				APPR: DMCGOWAN		2013/12/09		SD-180414-113	
ANGULAR TOL ± 0.5 °				THIRD ANGLE PROJECTION		DRAWING		SERIES	
DRAFT WHERE APPLICABLE MUST REMAIN WITHIN DIMENSIONS				B-SIZE		180414		MATERIAL NUMBER	
				CUSTOMER		GENERAL MARKET		SHEET NUMBER	
								2 OF 4	

DOCUMENT STATUS	P1	RELEASE DATE	2020/02/28	02:41:30
-----------------	----	--------------	------------	----------

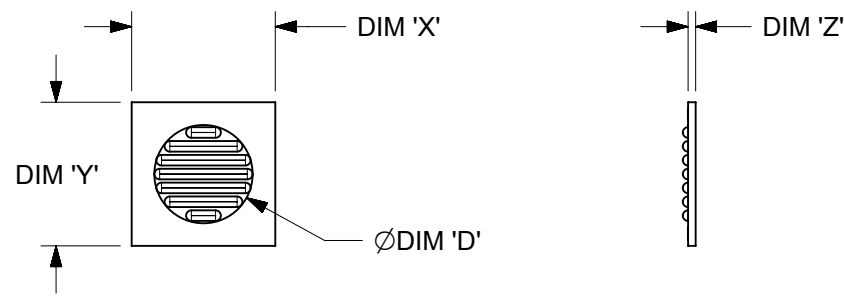
COB MFG	TYPE	DIM 'X'	DIM 'Y'	DIM 'Z'	DIM 'D'	OFFSET
VOSSLOH-SCHWABE	DMC114C	19.0	19.0	1.0	11.9	0.10
VOSSLOH-SCHWABE	DMC124***F, DMC125***F	19.0	19.0	1.0	13.1	0.10
VOSSLOH-SCHWABE	DMC125C	19.0	19.0	1.0	13.1	0.10
VOSSLOH-SCHWABE	DMC128***F	19.0	19.0	1.0	15.8	0.10

ILLUSTRATION OF P/N 180414-1113 HOLDER MATED WITH LED



SECTION Z-Z

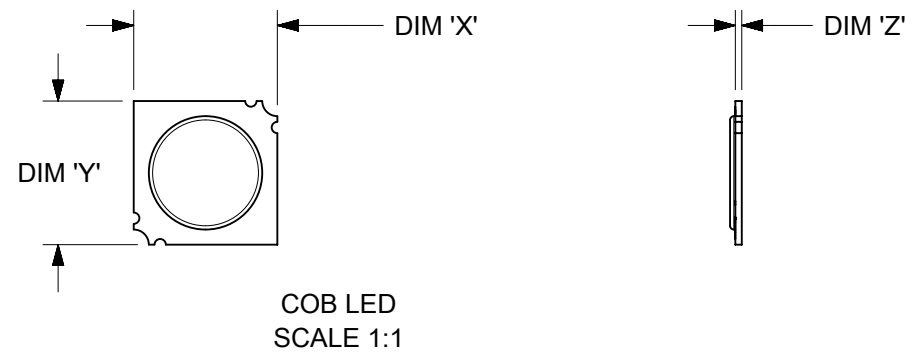
DETAIL B
SCALE 4:1



COB LED
SCALE 1:1

THIS DRAWING CONTAINS INFORMATION THAT IS PROPRIETARY TO MOLEX ELECTRONIC TECHNOLOGIES, LLC AND SHOULD NOT BE USED WITHOUT WRITTEN PERMISSION																																		
DIMENSION UNITS		SCALE		CURRENT REV DESC: OBSOLETE PART NO.																														
mm		2:1		<table border="1"> <tr> <td colspan="3">molex</td> </tr> <tr> <td colspan="3">COB LED HOLDER ASSEMBLY 19.0 MM X 19.0 MM SQUARE</td> </tr> <tr> <td colspan="3">PRODUCT CUSTOMER DRAWING</td> </tr> <tr> <td>DOCUMENT NUMBER</td> <td>DOC TYPE</td> <td>DOC PART</td> <td>REVISION</td> </tr> <tr> <td>SD-180414-113</td> <td>PSD</td> <td>001</td> <td>B5</td> </tr> <tr> <td>MATERIAL NUMBER</td> <td>CUSTOMER</td> <td colspan="2">SHEET NUMBER</td> </tr> <tr> <td>SEE CHART</td> <td>GENERAL MARKET</td> <td colspan="2">3 OF 4</td> </tr> </table>						molex			COB LED HOLDER ASSEMBLY 19.0 MM X 19.0 MM SQUARE			PRODUCT CUSTOMER DRAWING			DOCUMENT NUMBER	DOC TYPE	DOC PART	REVISION	SD-180414-113	PSD	001	B5	MATERIAL NUMBER	CUSTOMER	SHEET NUMBER		SEE CHART	GENERAL MARKET	3 OF 4	
molex																																		
COB LED HOLDER ASSEMBLY 19.0 MM X 19.0 MM SQUARE																																		
PRODUCT CUSTOMER DRAWING																																		
DOCUMENT NUMBER	DOC TYPE	DOC PART	REVISION																															
SD-180414-113	PSD	001	B5																															
MATERIAL NUMBER	CUSTOMER	SHEET NUMBER																																
SEE CHART	GENERAL MARKET	3 OF 4																																
GENERAL TOLERANCES (UNLESS SPECIFIED)				EC NO: 632260		2020/01/31																												
4 PLACES ±		±		DRWN: RPRABHUM		2020/02/28																												
3 PLACES ±		±		CHK'D: GGA		2020/02/28																												
2 PLACES ±		0.13 ±		APPR: GGA		2020/02/28																												
1 PLACE ±		0.25 ±		INITIAL REVISION:																														
0 PLACES ±		±		DRWN: MCOLE		2013/12/09																												
ANGULAR TOL		± 0.5°		APPR: DMCGOWAN		2013/12/09																												
DRAFT WHERE APPLICABLE MUST REMAIN WITHIN DIMENSIONS				THIRD ANGLE PROJECTION		DRAWING		SERIES																										
						B-SIZE		180414																										

COB MFG	TYPE	DIM 'X'	DIM 'Y'	DIM 'Z'	DIM 'D'	OFFSET
CITIZEN	CLL030, CLL032, CLU034, CLU036, CLU038	19.0	19.0	0.90	17.0	0.15
SEOUL	ZC12, ZC18	19.0	19.0	0.90	16.0	0.15
TRIDONIC	SLE G5 LES15	19.0	19.0	0.90	15.0	0.15
CITIZEN	CLU720, CLU721	19.0	19.0	0.90	13.5	0.15
EVERLIGHT	EAHP1919WA*, EAHP1919WB*, EAHP1919WC*	19.0	19.0	0.90	15.5	0.15
EVERLIGHT	EA1919 36V/16W	19.0	19.0	0.90	15.5	0.15
EVERLIGHT	EA1919 36V/19W	19.0	19.0	0.90	15.5	0.15
EVERLIGHT	EA1919 36V/26W	19.0	19.0	0.90	15.5	0.15
VOSSLOH-SCHWABE	DMC114C	19.0	19.0	1.00	11.9	0.25
VOSSLOH-SCHWABE	DMC124***F, DMC125***F	19.0	19.0	1.00	13.1	0.25
VOSSLOH-SCHWABE	DMC125C	19.0	19.0	1.00	13.1	0.25
VOSSLOH-SCHWABE	DMC128***F	19.0	19.0	1.00	15.8	0.25
BRIDGELUX	H15	19.0	19.0	1.00	16.5	0.35



THIS DRAWING CONTAINS INFORMATION THAT IS PROPRIETARY TO MOLEX ELECTRONIC TECHNOLOGIES, LLC AND SHOULD NOT BE USED WITHOUT WRITTEN PERMISSION										
DIMENSION UNITS mm		SCALE 2:1		CURRENT REV DESC: OBSOLETED PART NO.				molex		
GENERAL TOLERANCES (UNLESS SPECIFIED)				EC NO: 632260						
		MM	INCH	DRWN: RPRABHUM		2020/01/31		COB LED HOLDER ASSEMBLY 19.0 MM X 19.0 MM SQUARE		
4 PLACES ±				CHK'D: GGA		2020/02/28				
3 PLACES ±				APPR: GGA		2020/02/28		PRODUCT CUSTOMER DRAWING		
2 PLACES ± 0.13				INITIAL REVISION:						
1 PLACE ± 0.25				DRWN: MCOLE		2013/12/09		DOCUMENT NUMBER SD-180414-113		
0 PLACES ±				APPR: DMCGOWAN		2013/12/09				DOC TYPE PSD
ANGULAR TOL ± 0.5°				THIRD ANGLE PROJECTION		DRAWING	SERIES	MATERIAL NUMBER	CUSTOMER	SHEET NUMBER
DRAFT WHERE APPLICABLE MUST REMAIN WITHIN DIMENSIONS						B-SIZE	180414	SEE CHART	GENERAL MARKET	4 OF 4