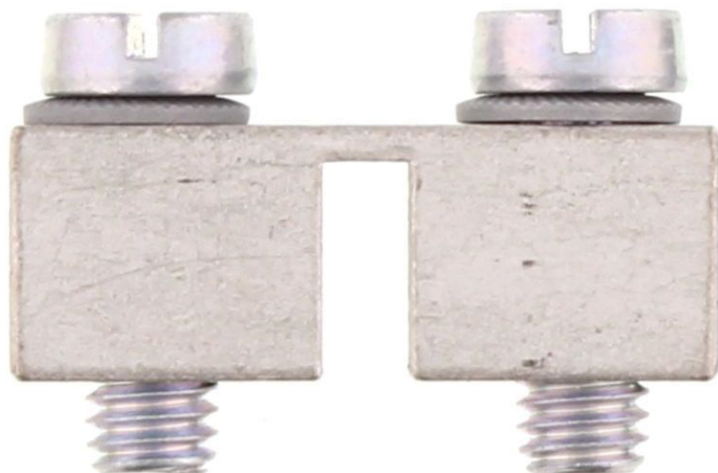


# Data sheet

## 17255.0 SQ 50/2



Cross-connector, No. of poles: 2, Mounting type: Can be screwed on, Width: 30.6 mm, Rated cross-section: 50 mm<sup>2</sup>, Colour: natural

### Business data

Article number	<u>17255.0</u>
Article name	SQ 50/2
GTIN (EAN)	4044211186814
Packaging unit	10
Quantity unit	PC
Weight per piece (not including packaging)	31.54 g
Weight per piece (including packaging)	31.64 g
Unit of weight	G
Customs number	85389099
Country of origin	DE
Product description	Cross-connector
Colour	Natural

### Technical data

#### Dimensions

Length	10 mm
Width	30.6 mm
Height	20 mm
Hole diameter	5.5 mm
Hole spacing (mid-point to mid-point)	18.6 mm
Pitch size	18.6 mm

#### Ratings

Max. voltage	1000 V
Rated current	150 A
Current load, max.	192 A
Rated cross-section	50 mm <sup>2</sup>
Contamination degree	3

#### Connection data

No. of poles	2
Screw head	Slotted
Screw threading	M 6
Tightening torque, min.	3.2 Nm
Tightening torque, max.	3.7 Nm

#### Materials

Material	Copper
Surface	Tin-plated
Surface screw	Galvanized

#### Further technical data

Mounting type	Screwable
Number of bridged terminals	2

#### Environmental Product Compliance

REACH Conform	yes
REACH Reference date	2023-01-17
REACH Candidate Substance Note	No
RoHS Conform	yes

---

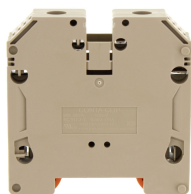
**Media**

---



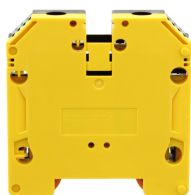
### Accessories

#### ##INVERSE##CONTA-CONNECT



Feed-through terminal, Screw connection, Mounting type: Mounting rail TS 35/7.5, Rated cross-section: 50 mm<sup>2</sup>, Width: 18.5 mm, Colour: Beige

Article number	Article name	GTIN (EAN)	Packaging unit
<u>17156.2</u>	SRK 50/2A BG	4044211186715	10



Feed-through terminal, Screw connection, Mounting type: Mounting rail TS 35/7.5, Rated cross-section: 50 mm<sup>2</sup>, Width: 18.5 mm, Colour: Black-yellow

Article number	Article name	GTIN (EAN)	Packaging unit
<u>17157.2</u>	SRK 50/2A/PE BKYE	4044211186722	10 ST