

# OP10 HMI

The TECO OP10 monochrome HMI offers a simple but powerful user interface for the SG2 (Ver 3) programmable Logic Relay. Monitor data registers in real time, change parameters, perform switching functions, list alarms, and transfer data between networked SG2's\*.

- 192 x 64 pixel display
- 24-key keypad
- Two serial ports:
  - COM1 supports programming and point-to-point communications
  - RS485 supports multi-drop networks
- Supports Modbus RTU
- Password protection
- Import bitmaps
- Offline program simulation
- Bar graphs, trend charts, alarm logging



## FREE Programming Software

Program the OP10 using simple fill-in-the-blank object windows. Establish network links to remote devices. Create dynamic text, trend charts, bargraphs, alarm logs, and more. View and verify your program in simulation mode. Download software free at: [www.bb-elec.com/bb-elec/software/PLC/OP10-PCLINKV2.1setup.exe](http://www.bb-elec.com/bb-elec/software/PLC/OP10-PCLINKV2.1setup.exe)

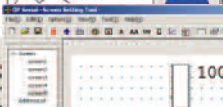
Dynamic Text



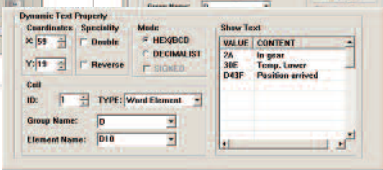
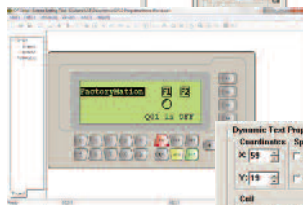
Trending



Bar Graphs



Simulation

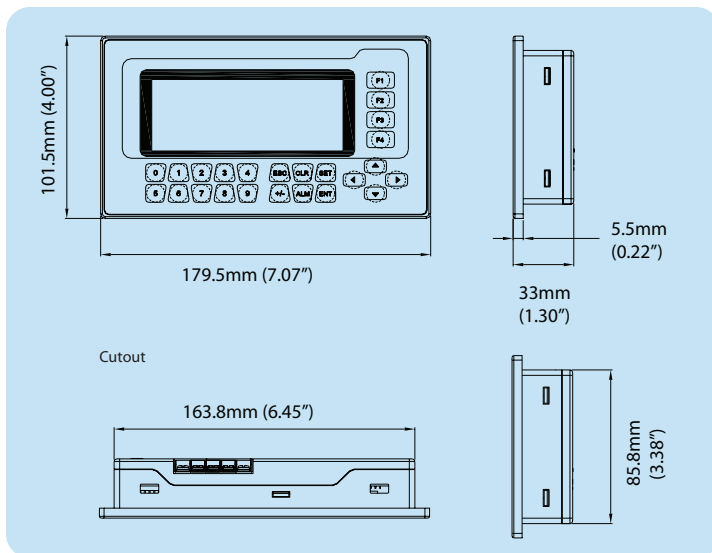


Simple Setup

Part Number	Description	Price
OP10	4.3" Monochrome Graphic Panel, 192 x 64 pixels, 4 Function Keys, Numeric Keypad, 2 serial ports, 24VDC input power	
OP10-PL01	Cable (9-pin Serial, PC to 9-pin Serial, OP10)	
SG2-PL01	SG2 to OP10 Communication Cable	
SG2-Software	SG2 & OP10 Programming S/W. Available on CD or <b>FREE</b> via download.	

General Specifications	
Power	DC24V, -15% ~ +10%
Current Consumption	80mA Max
Approvals	UL, CE
Communication Interface	COM1: (9-pin, D-SUB, female) RS-232/422; RS485: terminal screws
Environmental Rating	IP65 (front of panel)
Maximum Devices	8 without repeater; 255 with repeater
Dimensions	179.5 x 101.5 x 33mm (7.07 x 4.00 x 1.30")
Weight	460g (~1 lb)
Environmental	
Operating Temperature	0°C ~ 55°C (32°F ~ 131°F)
Storage Temperature	-40°C ~ 70°C (-40°F ~ 158°F)
Relative Humidity	10% ~ 95%, non-condensing
Vibration	1.75mm displacement, 5 - 9Hz
Impact	15G, 11ms, vertical from X, Y, Z directions

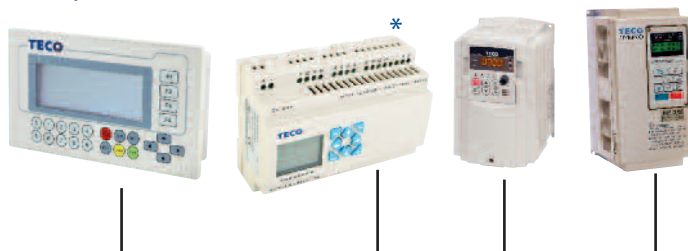
### Dimensions



### Communication with one SG2 via programming port



### Multi-drop Modbus communications over RS485 network



\*SG2 must be V-series to communicate on RS485.