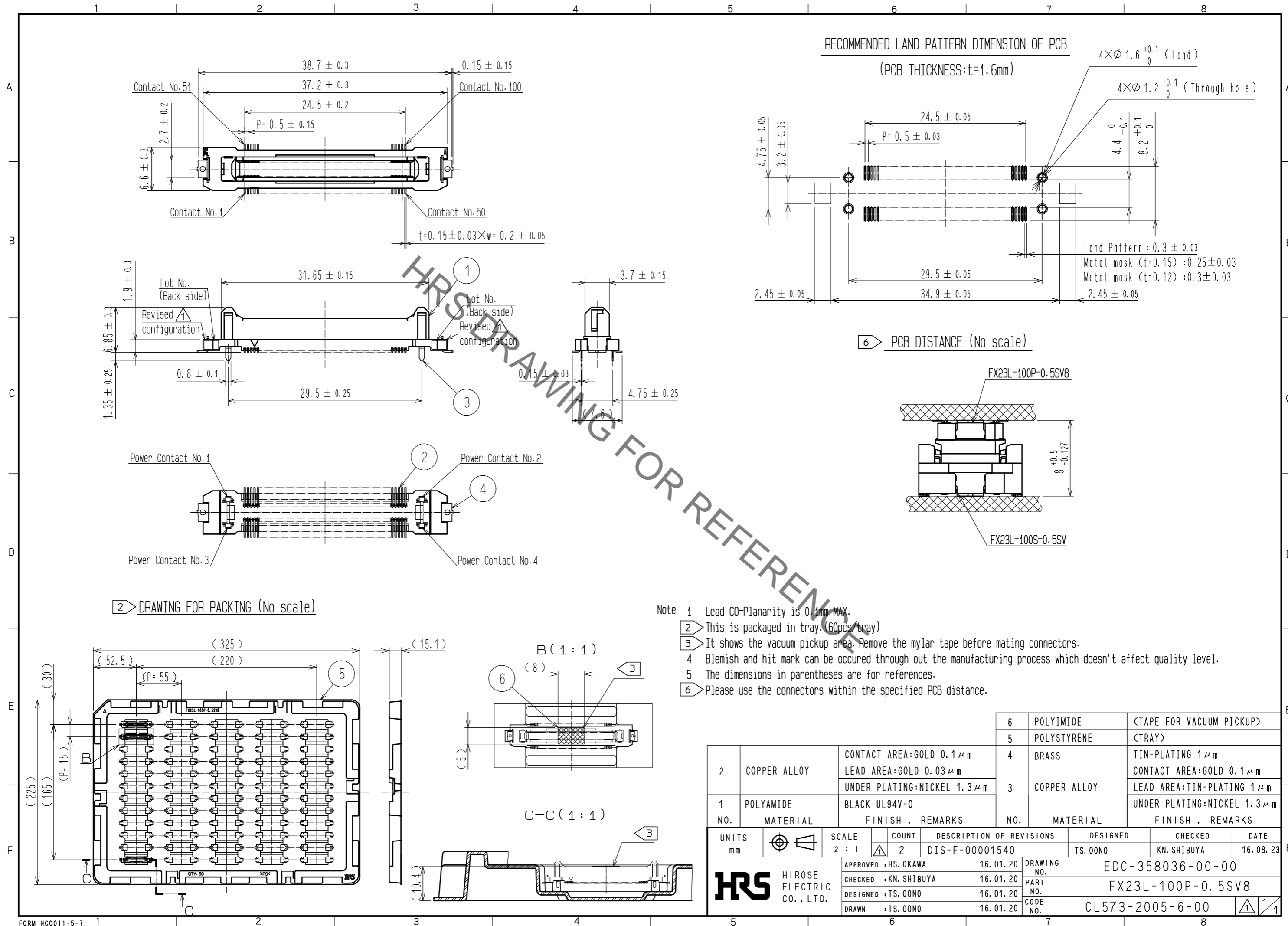


May.1.2023 Copyright 2023 HIROSE ELECTRIC CO., LTD. All Rights Reserved.
 In case of consideration for using Automotive equipment / device which demand high reliability, kindly contact our sales window correspondents.



| NO. | MATERIAL | FINISH . REMARKS | NO. | MATERIAL | FINISH . REMARKS |
|-----|--------------|---|-----|--------------|---|
| 2 | COPPER ALLOY | CONTACT AREA:GOLD 0.1 μm LEAD AREA:GOLD 0.03 μm UNDER PLATING:NICKEL 1.3 μm | 6 | POLYIMIDE | (TAPE FOR VACUUM PICKUP) |
| 1 | POLYAMIDE | BLACK UL94V-0 | 5 | POLYSTYRENE | (TRAY) |
| | | | 4 | BRASS | TIN-PLATING 1 μm |
| | | | 3 | COPPER ALLOY | CONTACT AREA:GOLD 0.1 μm LEAD AREA:TIN-PLATING 1 μm UNDER PLATING:NICKEL 1.3 μm |

| UNITS | SCALE | COUNT | DESCRIPTION OF REVISIONS | DESIGNED | CHECKED | DATE |
|-------|-------|-------|--------------------------|----------|------------|----------|
| mm | 2 : 1 | 2 | DIS-F-00001540 | TS.00NO | KN.SHIBUYA | 16.08.23 |

| APPROVED | DESIGNED | DRAWING NO. |
|---------------------|------------------|-------------------|
| HS. OKAWA 16.01.20 | TS.00NO | EDC-358036-00-00 |
| CHECKED | DESIGNED | PART NO. |
| KN.SHIBUYA 16.01.20 | TS.00NO | FX23L-100P-0.5SV8 |
| DESIGNED | DRAWN | CODE NO. |
| TS.00NO 16.01.20 | TS.00NO 16.01.20 | CL573-2005-6-00 |