

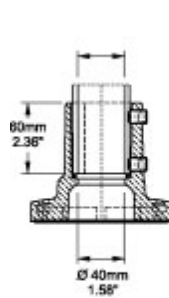


Quality Products. Service Excellence.

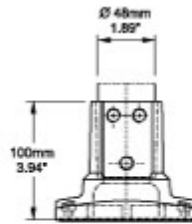
Tara Plus Base 48 TPSSB48 Series



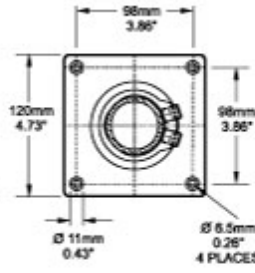
- For use with 48mm round tube.
- Not for use with any horizontal configurations.
- Compatible with tube up or tube down configurations.
- Die-cast Aluminum G Al Si 12.
- No rotation.



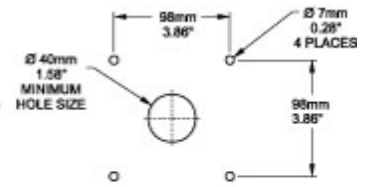
Front Section of Base



End View



Top View



Hole Pattern

Part No. **R149-030-000**

Data subject to change without notice