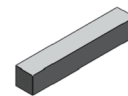
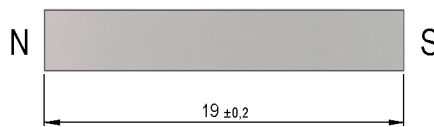
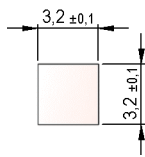


**Dimensions mm[inch]**  
 tolerances acc. to DIN ISO 2768-m  
 Toleranzen gem. DIN ISO 2768-m

**Isometric**  
 Scale 1:1  
 Maßstab 1:1



Mag. values DIN IEC 60404-8-	Conditions	Min	Typ	Max	Unit
Remanence Br		1.120	1.240		mT
Revers. temp. coeff. of Br			-0,02		%/K
Coercivity HcB		47	51,3		kA/m
Coercivity HcJ		48	51,7		kA/m
Density			7,4		g/cu cm
Max. operating temperature				450	°C
Magnetic moment	inclusive of 5% tolerance	15,5	19,2		E-6 Vs*cm
Magnet Material		Aluminium Nickel Cobalt			
Direction of Magnetization		across 19 mm			

General data	Conditions	Min	Typ	Max	Unit
Remarks		All details according to manufacturers information			