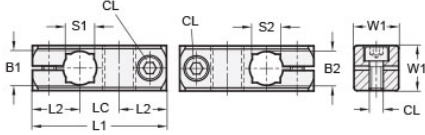




MT10/10-CC2W-A

Ruland Two-Way Connector Clamp, Thru Holes 10mmx10mm, L 46mm, Aluminum




Description

Ruland MT10/10-CC2W-A a two-way connector clamp with perpendicular thru holes for 10mm round and 8mm square tubes, M5 clamp screws, 16mm width and height, and 46mm overall length. It is designed to fit on Ruland tubes and flange bolt bases that begin with MT10. MT10/10-CC2W-A is aluminum and screws are 304 stainless steel for use in most industrial applications. This two-way connector is commonly used to support tubes for mounting sensors, screens, reflectors, plexiglass machine guards, and other industrial components. Thru holes are perpendicular to one another for fixed mounting of components at a 90° angle. MT10/10-CC2W-A is ideal for applications where the tube angles remain fixed such as on conveyors. MT10:12-ALK-M5-20 adjustable clamping handles can be used in place of standard hardware if rapid fine repositioning of the tube(s) is required. MT10/10-CC2W-A is manufactured by Otto Ganter, inventoried by Ruland, and RoHS3 compliant.

Product Specifications

Thru Hole 1 Diameter B1	10 mm	Thru Hole 2 Diameter B2	10 mm
Thru Hole Tolerance	+0.09/-0 mm	Thru Hole 2 Tolerance	+0.09/-0 mm
Overall Length L1	46 mm	Edge To Center L2	17 mm
Center To Center LC	12 mm	Square Thru Hole 1 S1	8 mm
Square Thru Hole 2 S2	8 mm	Width & Height W1	16 mm
Clamp Screw CL	M5	Weight (lbs)	0.055100
Material Specification	Aluminum	Manufacturer	JW Winco/ Otto Ganter
UPC	634529231470	Country of Origin	Germany
Tariff Code	7609.00.0000		

Note 1 Performance ratings are for guidance only. The user must determine suitability for a particular application.

Prop 65  **WARNING** This product can expose you to the chemical Nickel (metallic), known to the State of California to cause cancer. For more information go to www.P65Warnings.ca.gov.