

External insulated cross-connector, No. of poles: 10, Mounting type: Plug in, Width: 98.9 mm, Rated current: 57 A; Colour: Yellow

**RAL:** 1026

### Business data

Article number	3994.8
Article name	AQI 10/10/18 YE
GTIN (EAN)	4044211130428
Packaging unit	10
Quantity unit	PC
Weight per piece (not including packaging)	15.2 g
Weight per piece (including packaging)	15.4 g
Unit of weight	G
Customs number	85389099
Country of origin	DE
Product description	External insulated cross-connector
Colour	Yellow

---

### Technical data

---

#### Dimensions

Width	98.9 mm
-------	---------

Pitch size	10 mm
------------	-------

#### Ratings

Rated current	57 A
---------------	------

Contamination degree	3
----------------------	---

#### Connection data

No. of poles	10
--------------	----

#### Materials

Material	Copper
----------	--------

Surface	Tin-plated
---------	------------

Insulation housing	Polyamide 6.6
--------------------	---------------

Flammability class UL 94	V-0
--------------------------	-----

Working temperature, min.	-40 °C
---------------------------	--------

Working temperature, max.	120 °C
---------------------------	--------

#### Further technical data

Mounting type	Plug in
---------------	---------

Insulation available	✓
----------------------	---

Touch protection is available	✓
-------------------------------	---

Number of bridged terminals	10
-----------------------------	----

#### Environmental Product Compliance

REACH Conform	yes
---------------	-----

REACH Reference date	2023-01-17
----------------------	------------

REACH Candidate Substance Note	No
--------------------------------	----

RoHS Conform	yes
--------------	-----

---

### Media

---

### Accessories

#### ##INVERSE##CONTA-CONNECT



Fuse-disconnect terminal, Screw connection, Mounting type:Mounting rail TS 35/7.5 and TS 32, Rated cross-section: 10 mm<sup>2</sup>, Width: 10 mm, Colour: Beige

Article number	Article name	GTIN (EAN)	Packaging unit
<u>1108.2</u>	SIK 10/Z/LED(RD)/12V DC/24V AC BG	4044211017118	25 ST



Fused terminal, Screw connection, Mounting type:Mounting rail TS 35/7.5 and TS 32, Rated cross-section: 10 mm<sup>2</sup>, Width: 10 mm, Colour: Black

Article number	Article name	GTIN (EAN)	Packaging unit
<u>17365.4</u>	SIK 10/Z PA-G BK	4044211178390	25 ST



Fuse-disconnect terminal, Screw connection, Mounting type:Mounting rail TS 35/7.5 and TS 32, Rated cross-section: 10 mm<sup>2</sup>, Width: 10 mm, Colour: Beige

Article number	Article name	GTIN (EAN)	Packaging unit
<u>1110.2</u>	SIK 10/Z/LED(RD)/40-60V DC/80-120V AC BG	4044211017439	25 ST



Fuse-disconnect terminal, Screw connection, Mounting type:Mounting rail TS 35/7.5 and TS 32, Rated cross-section: 10 mm<sup>2</sup>, Width: 10 mm, Colour: Beige

Article number	Article name	GTIN (EAN)	Packaging unit
<u>1111.2</u>	SIK 10/Z/LED(RD)/115V DC/230V AC BG	4044211017446	25 ST



Fuse-disconnect terminal, Screw connection, Mounting type:Mounting rail TS 35/7.5 and TS 32, Rated cross-section: 10 mm<sup>2</sup>, Width: 10 mm, Colour: Beige

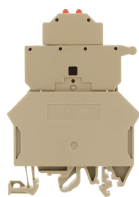
Article number	Article name	GTIN (EAN)	Packaging unit
<u>1109.2</u>	SIK 10/Z/LED(RD)/20-30V DC/40-60V AC BG	4044211017323	25 ST



Fused terminal with disconnect plug, Screw connection, Mounting type:Mounting rail TS 35/7.5 and TS 32, Rated cross-section: 10 mm<sup>2</sup>, Width: 10 mm, Colour: Beige

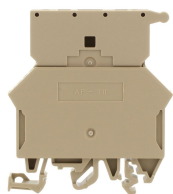
Article number	Article name	GTIN (EAN)	Packaging unit
<u>17043.2</u>	SIK 10/Z/ST BG	4044211155810	25 ST

### ##INVERSE##CONTA-CONNECT



Fuse-disconnect terminal, Screw connection, Mounting type:Mounting rail TS 35/7.5 and TS 32, Rated cross-section: 10 mm<sup>2</sup>, Width: 10 mm, Colour: Beige

Article number	Article name	GTIN (EAN)	Packaging unit
<u>1112.2</u>	SIK 10/Z/2 LED's(RD)/24V DC BG	4044211017477	25 ST



Fuse-disconnect terminal, Screw connection, Mounting type:Mounting rail TS 35/7.5 and TS 32, Rated cross-section: 10 mm<sup>2</sup>, Width: 10 mm, Colour: Beige

Article number	Article name	GTIN (EAN)	Packaging unit
<u>1102.2</u>	SIK 10/Z BG	4044211016395	25 ST



Fused terminal with disconnect plug, Screw connection, Mounting type:Mounting rail TS 35/7.5 and TS 32, Rated cross-section: 10 mm<sup>2</sup>, Width: 10 mm, Colour: Black

Article number	Article name	GTIN (EAN)	Packaging unit
<u>17041.4</u>	SIK 10/Z/ST PA-G BK	4044211155780	25 ST