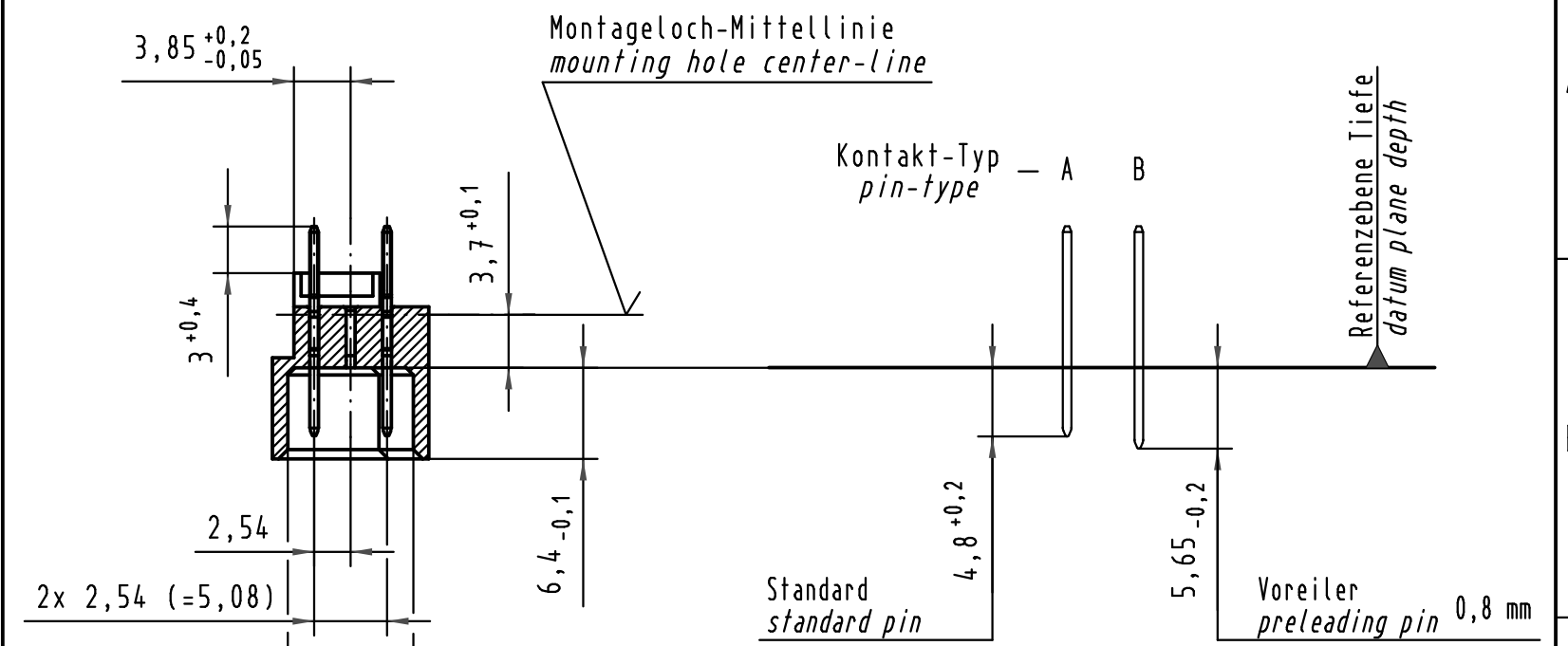
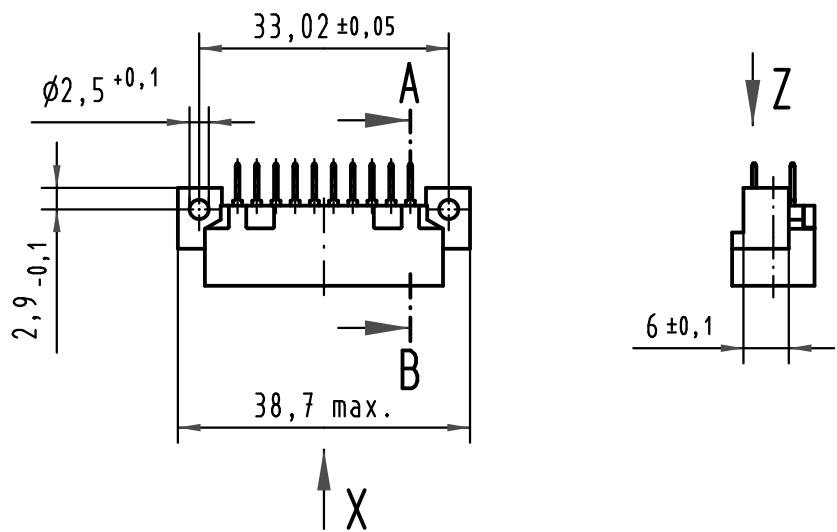
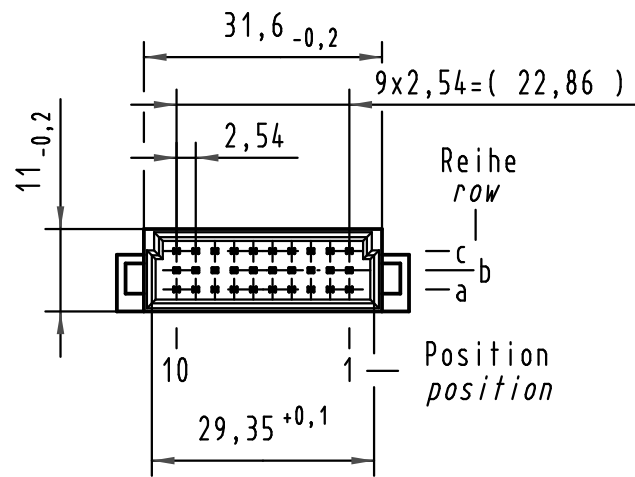
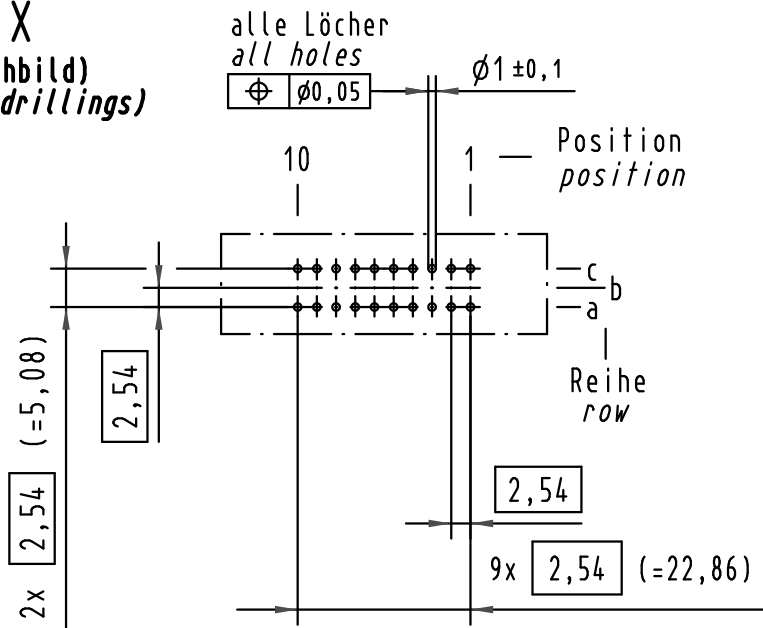


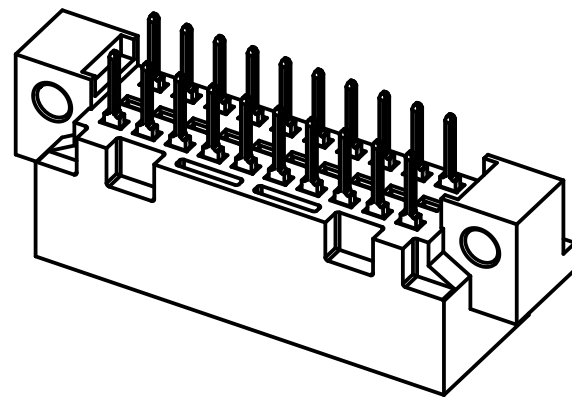
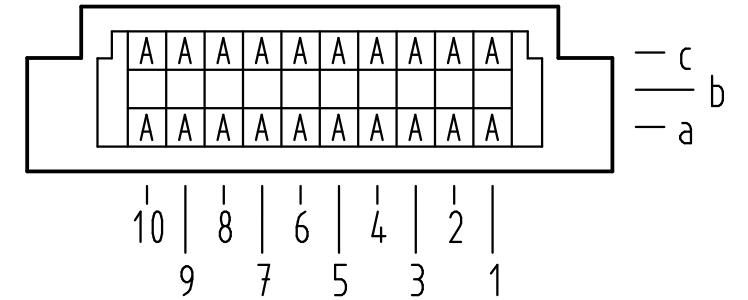
Alle Rechte vorbehalten/ All rights reserved

X
(Lochbild)
(board drillings)



A-B
2:1

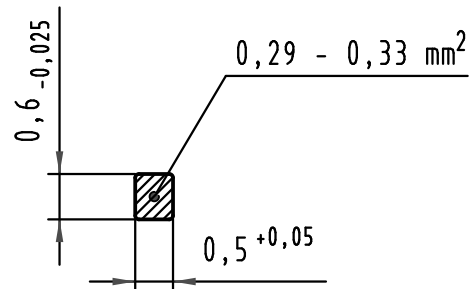
X Kontaktbelegung
contact loading



09 25 120 6922	2	Au flash over PdNi over Ni
Bestell-Nr. part-no.	Anforderungsstufe nach IEC performance level acc. to IEC	Kontaktoberfläche contact plating

Z
10:1

Querschnitt der
Lötanschlüsse:
cross-section of
solder terminations:



 All Dimensions in mm Original Size DIN A 3	Techn. Character.			Nicht tolerierte Maße/Free size tolerances IEC 60603-2	
	Detail.	24.06.09	MR	Maßstab/Scale 1:1 2:1 10:1	Bauform 3C Messerleiste Einlöt, 20 pol. type 3C male connector solder, 20 pol.
	Insp.	24.06.09	RA		
	Stand.				
35605	HARTING Electronics GmbH & Co. KG			 TB 09 25 120 x922	
Mod.	Dat.	Name	D-32339 ESPELKAMP		Sub.