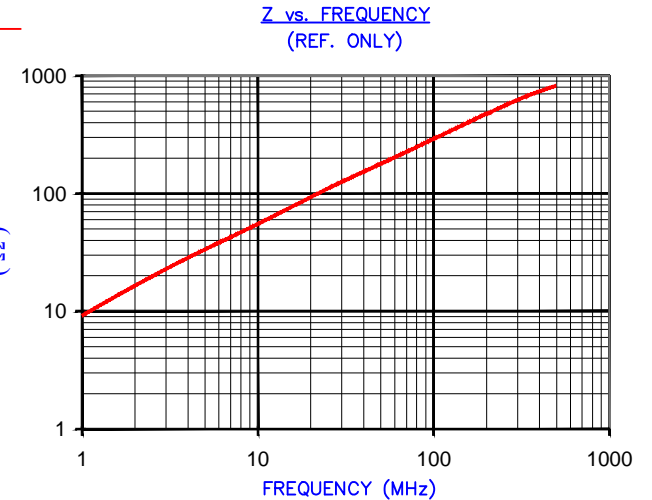


DETAIL "A"
CHAMFER
SCALE=4.5:1

RoHS

IMPEDANCE (Z)			
Frequency	25 MHz	100 MHz	300 MHz
Nominal (REF)	114 Ω	298 Ω	588 Ω
Minimum	- Ω	238 Ω	- Ω



AGILENT E4991A Impedance/Material Analyzer
HP 16092A-Test Fixture TEST REF. 3036

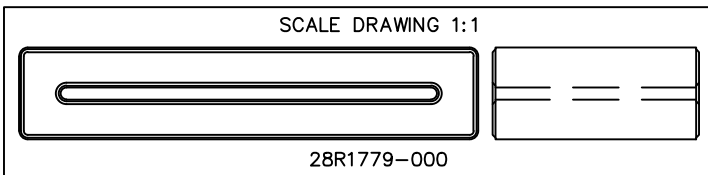
FERRITE CORE DIMENSIONS (SPEC): mm [in]

A	63.50 [2.500]	+ 1.27 [.050]
B	52.07 [2.050]	+ 1.02 [.040]
C	28.58 [1.125]	+ 0.64 [.025]
D	12.70 [.500]	+0.89 [.035] -0.51 [.020]
E	1.68 [.066]	+ 0.51 [.020]

WEIGHT/1000 101.20 kgs [223.10 Lbs]

NOTES: UNLESS OTHERWISE SPECIFIED

1. COSMETIC SPECIFICATION REFER TO WI-QA-038.



DIMENSIONS ARE IN mm[INCHES].				This print is the property of Laird Tech. and is loaned in confidence subject to return upon request and with the understanding that no copies shall be made without the written consent of Laird Tech. All rights to design or invention are reserved.			
REV	DESCRIPTION	DATE	INT				
K	UPDATE COMPANY LOGO	01/02/13	QIU	PROJECT/PART NUMBER: 28R1779-000 REV: K DRAWN BY: JAZ MATERIAL: FERRITE			
J	UPDATE MIN Z SPECS & COMPANY LOGO	07/27/07	TMB				
H	UPDATE Z SPECS & ADD TEST REF#	08/19/05	TMB				
G	CHANGE PRINT FORMAT CHANGE Z SPECS REMOVE NOTE 1	05/19/03	TMB				
F	ADD ZRX CURVE TO PRINT REVISE PART LAYOUT FORMAT REVISE ELECTRICAL TESTING FORMAT, NOTES, AND WEIGHT/1000 kgs [Lbs]	09/10/02	TMB				
DATE:	08/04/92	SCALE:	1.5 : 1				
CAD #	28R1779-000-K	TOOL #	R1779				