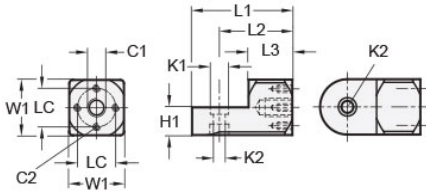




MT20-SWMB-M8-A

Ruland Swivel Mounting Block, Width/Height 30mm, Length 55mm, Aluminum



Description

Ruland MT20-SWMB-M8-A is a swivel mounting block with a M8 center thread, M4 cross threads, 15mm base height, 10mm recess diameter, 30mm width/height, and 55mm overall length. It is made of aluminum with a matte tumbled finish. Swivel mounting blocks are primarily designed to mount sensor and mounting brackets with the same width/height. In addition, this part can be combined with swivel and t-swivel clamp joints with the same width/height to make articulated swivel clamp mounting joints. Adjustable lever clamping kits with the same width/height can be attached to the swivel mounting block.

Product Specifications

Center Thread C1	M8	Cross Thread C2	M4 x 4
Counterbore 1 Diameter K1	10 mm	Counterbore 2 Diameter K2	6.5 mm
Width & Height W1	30 mm	Base Height H1	15 mm
Center To Center LC	20 mm	Edge To Center Of Counterbore L2	40 mm
Overall Length L1	55 mm	Hub Length LH	24 mm
Material Specification	Aluminum	Manufacturer	JW Winco/ Otto Ganter
Country of Origin	Germany	Weight (lbs)	0.184100
UPC	634529302361	Tariff Code	7609.00.0000
UNSPC	31162908		