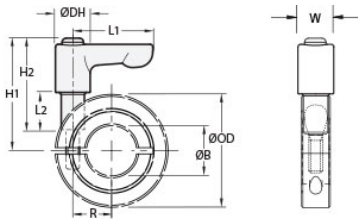




LVO-MCL-24E-SS

Ruland LVO-MCL-24E-SS, 1-1/2" One-Piece Shaft Collar with Clamping Lever,
303 SS Collar with Zinc Plated Lever, 60mm OD, 15mm Width




Description

Ruland LVO-MCL-24E-SS is a one-piece quick clamping shaft collar with clamping lever with a 1.5000" bore, 60mm OD, and 15mm width. It is made from MCL-24E-SS and LF45-CL-M6:20-ZS. MCL-24E-SS is an international series shaft collar that has an inch bore, metric hardware, and metric dimensions. The clamp style design does not mar the shaft, is easy to remove, and is indefinitely adjustable. The threaded stud on the lever is used in place of standard collar hardware. When combined, the two parts create a shaft collar that requires no tools to install, remove, or reposition and is ideally suited for packaging, printing, and other applications where frequent setup changes and adjustments are needed. Once the lever is installed in the shaft collar, users simply turn the lever until they meet their desired torque. The adjustable lever can be reposition by the user without the loss of holding power by lifting the handle and twisting it 40° to lock it in a new position. This allows for use in space constrained environments where 360° rotation is not possible to fully seat the lever. MCL-24E-SS is made from 303 stainless steel. LF45-CL-M6:20-ZS has a zinc plated steel handle and stainless steel threaded stud. This material combination allows for a durable quick clamping and release component with high corrosion resistance that is suitable for most industrial applications. The lever is orange for safety and ease of identification. MCL-24E-SS is manufactured by Ruland and LF45-CL-M6:20-ZS is manufactured by Otto Ganter. LVO-MCL-24E-SS is RoHS3 and REACH compliant.

Product Specifications

Bore (B)	1.5000 in	Bore Tolerance	+0.0020 in / +0.0005 in
Outer Diameter (OD)	60 mm	Center to Lever Top H1	40.8 mm
Width (W)	15 mm	Width Tolerance	+0.076 mm / -0.254 mm
Lever Length L1	45 mm	Lever Height H2	40.5 mm
Hub Diameter DH	13 mm	Sleeve Length L2	20 mm
Recommended Shaft Tolerance	+0.0000 in / -0.0005 in	Thread TH	M6
Hex Wrench Size	5.0 mm	Seating Torque	9.6 Nm
Screw Location (R)	24.99 mm	Number of Screws	1 ea
Collar Part Number	MCL-24E-SS	Lever Part Number	LF45-CL-M6:20-ZS-O
Collar Material	303 Stainless Steel	Collar Finish	Bright
Handle Color	Orange	Handle Material	Zinc
Handle Finish	Powder Coated	Insert and Screw Material	303 Stainless Steel
Manufacturer	Ruland Manufacturing	Country of Origin	Shaft Collar - USA Lever - Germany
Weight (lbs)	0.515800	UPC	634529293867
Tariff Code	8483.60.8000	UNSPC	31162811

Note 1 Performance ratings are for guidance only. The user must determine suitability for a particular application.
Prop 65  **WARNING** This product can expose you to the chemical Soots, Benzene, Lead, Nickel (metallic), known to the State of California to cause cancer