

CUTTER CODE	CABLE WIRE GAUGE CAPACITY	CABLE TYPES	REFERENCE CABLE GROUP	
			MIN. GAUGE	MAX. GAUGE
A	.070 / .110	RG 174, RG 214, RG 316, RG 178, RG 215, RG 318, RG 400	100	5
I	.110 / .185	RG 100, AWT 742, RG 392, RG 402, RG 403, RG 404, RG 405, RG 406, RG 407, RG 408, RG 409, RG 410, RG 411, RG 412, RG 413, RG 414, RG 415, RG 416, RG 417, RG 418, RG 419, RG 420, RG 421, RG 422, RG 423, RG 424, RG 425, RG 426, RG 427, RG 428, RG 429, RG 430, RG 431, RG 432, RG 433, RG 434, RG 435, RG 436, RG 437, RG 438, RG 439, RG 440, RG 441, RG 442, RG 443, RG 444, RG 445, RG 446, RG 447, RG 448, RG 449, RG 450, RG 451, RG 452, RG 453, RG 454, RG 455, RG 456, RG 457, RG 458, RG 459, RG 460, RG 461, RG 462, RG 463, RG 464, RG 465, RG 466, RG 467, RG 468, RG 469, RG 470, RG 471, RG 472, RG 473, RG 474, RG 475, RG 476, RG 477, RG 478, RG 479, RG 480, RG 481, RG 482, RG 483, RG 484, RG 485, RG 486, RG 487, RG 488, RG 489, RG 490, RG 491, RG 492, RG 493, RG 494, RG 495, RG 496, RG 497, RG 498, RG 499, RG 500	100	4
B	.150 / .215	RG 214, RG 316, RG 412, RG 413, RG 414, RG 415, RG 416, RG 417, RG 418, RG 419, RG 420, RG 421, RG 422, RG 423, RG 424, RG 425, RG 426, RG 427, RG 428, RG 429, RG 430, RG 431, RG 432, RG 433, RG 434, RG 435, RG 436, RG 437, RG 438, RG 439, RG 440, RG 441, RG 442, RG 443, RG 444, RG 445, RG 446, RG 447, RG 448, RG 449, RG 450, RG 451, RG 452, RG 453, RG 454, RG 455, RG 456, RG 457, RG 458, RG 459, RG 460, RG 461, RG 462, RG 463, RG 464, RG 465, RG 466, RG 467, RG 468, RG 469, RG 470, RG 471, RG 472, RG 473, RG 474, RG 475, RG 476, RG 477, RG 478, RG 479, RG 480, RG 481, RG 482, RG 483, RG 484, RG 485, RG 486, RG 487, RG 488, RG 489, RG 490, RG 491, RG 492, RG 493, RG 494, RG 495, RG 496, RG 497, RG 498, RG 499, RG 500	100	3
C	.150 / .230	RG 174, RG 214, RG 316, RG 412, RG 413, RG 414, RG 415, RG 416, RG 417, RG 418, RG 419, RG 420, RG 421, RG 422, RG 423, RG 424, RG 425, RG 426, RG 427, RG 428, RG 429, RG 430, RG 431, RG 432, RG 433, RG 434, RG 435, RG 436, RG 437, RG 438, RG 439, RG 440, RG 441, RG 442, RG 443, RG 444, RG 445, RG 446, RG 447, RG 448, RG 449, RG 450, RG 451, RG 452, RG 453, RG 454, RG 455, RG 456, RG 457, RG 458, RG 459, RG 460, RG 461, RG 462, RG 463, RG 464, RG 465, RG 466, RG 467, RG 468, RG 469, RG 470, RG 471, RG 472, RG 473, RG 474, RG 475, RG 476, RG 477, RG 478, RG 479, RG 480, RG 481, RG 482, RG 483, RG 484, RG 485, RG 486, RG 487, RG 488, RG 489, RG 490, RG 491, RG 492, RG 493, RG 494, RG 495, RG 496, RG 497, RG 498, RG 499, RG 500	100	4
O	.235 / .270	RG 214, RG 316, RG 412, RG 413, RG 414, RG 415, RG 416, RG 417, RG 418, RG 419, RG 420, RG 421, RG 422, RG 423, RG 424, RG 425, RG 426, RG 427, RG 428, RG 429, RG 430, RG 431, RG 432, RG 433, RG 434, RG 435, RG 436, RG 437, RG 438, RG 439, RG 440, RG 441, RG 442, RG 443, RG 444, RG 445, RG 446, RG 447, RG 448, RG 449, RG 450, RG 451, RG 452, RG 453, RG 454, RG 455, RG 456, RG 457, RG 458, RG 459, RG 460, RG 461, RG 462, RG 463, RG 464, RG 465, RG 466, RG 467, RG 468, RG 469, RG 470, RG 471, RG 472, RG 473, RG 474, RG 475, RG 476, RG 477, RG 478, RG 479, RG 480, RG 481, RG 482, RG 483, RG 484, RG 485, RG 486, RG 487, RG 488, RG 489, RG 490, RG 491, RG 492, RG 493, RG 494, RG 495, RG 496, RG 497, RG 498, RG 499, RG 500	100	5
F1	.271 / .365	RG 214, RG 316, RG 412, RG 413, RG 414, RG 415, RG 416, RG 417, RG 418, RG 419, RG 420, RG 421, RG 422, RG 423, RG 424, RG 425, RG 426, RG 427, RG 428, RG 429, RG 430, RG 431, RG 432, RG 433, RG 434, RG 435, RG 436, RG 437, RG 438, RG 439, RG 440, RG 441, RG 442, RG 443, RG 444, RG 445, RG 446, RG 447, RG 448, RG 449, RG 450, RG 451, RG 452, RG 453, RG 454, RG 455, RG 456, RG 457, RG 458, RG 459, RG 460, RG 461, RG 462, RG 463, RG 464, RG 465, RG 466, RG 467, RG 468, RG 469, RG 470, RG 471, RG 472, RG 473, RG 474, RG 475, RG 476, RG 477, RG 478, RG 479, RG 480, RG 481, RG 482, RG 483, RG 484, RG 485, RG 486, RG 487, RG 488, RG 489, RG 490, RG 491, RG 492, RG 493, RG 494, RG 495, RG 496, RG 497, RG 498, RG 499, RG 500	100	5
HF	.271 / .305	RG 214, RG 316, RG 412, RG 413, RG 414, RG 415, RG 416, RG 417, RG 418, RG 419, RG 420, RG 421, RG 422, RG 423, RG 424, RG 425, RG 426, RG 427, RG 428, RG 429, RG 430, RG 431, RG 432, RG 433, RG 434, RG 435, RG 436, RG 437, RG 438, RG 439, RG 440, RG 441, RG 442, RG 443, RG 444, RG 445, RG 446, RG 447, RG 448, RG 449, RG 450, RG 451, RG 452, RG 453, RG 454, RG 455, RG 456, RG 457, RG 458, RG 459, RG 460, RG 461, RG 462, RG 463, RG 464, RG 465, RG 466, RG 467, RG 468, RG 469, RG 470, RG 471, RG 472, RG 473, RG 474, RG 475, RG 476, RG 477, RG 478, RG 479, RG 480, RG 481, RG 482, RG 483, RG 484, RG 485, RG 486, RG 487, RG 488, RG 489, RG 490, RG 491, RG 492, RG 493, RG 494, RG 495, RG 496, RG 497, RG 498, RG 499, RG 500	100	5
FA	.300 / .450	RG 214, RG 316, RG 412, RG 413, RG 414, RG 415, RG 416, RG 417, RG 418, RG 419, RG 420, RG 421, RG 422, RG 423, RG 424, RG 425, RG 426, RG 427, RG 428, RG 429, RG 430, RG 431, RG 432, RG 433, RG 434, RG 435, RG 436, RG 437, RG 438, RG 439, RG 440, RG 441, RG 442, RG 443, RG 444, RG 445, RG 446, RG 447, RG 448, RG 449, RG 450, RG 451, RG 452, RG 453, RG 454, RG 455, RG 456, RG 457, RG 458, RG 459, RG 460, RG 461, RG 462, RG 463, RG 464, RG 465, RG 466, RG 467, RG 468, RG 469, RG 470, RG 471, RG 472, RG 473, RG 474, RG 475, RG 476, RG 477, RG 478, RG 479, RG 480, RG 481, RG 482, RG 483, RG 484, RG 485, RG 486, RG 487, RG 488, RG 489, RG 490, RG 491, RG 492, RG 493, RG 494, RG 495, RG 496, RG 497, RG 498, RG 499, RG 500	100	5

PART NO.		DESCRIPTION		REV.	
01-1000-0001	01-1000-0002	01-1000-0003	01-1000-0004	01-1000-0005	01-1000-0006
01-1000-0007	01-1000-0008	01-1000-0009	01-1000-0010	01-1000-0011	01-1000-0012

REVISIONS			010-0093	513
REV	DESCRIPTION	DATE	APPROVED	
1	DESIGN PER BLD 1514	6/10/06	MS	

RED INDICATES ORIGINAL

SEE SPECIAL STRIPPING DIMENSIONS

- 6. EACH ITEM MAY BE SOLD SEPARATELY
- 5. EACH KIT IS SUPPLIED WITH A 12.6 X 6.5 X 5.4 CARRYING CASE AND USER INSTRUCTIONS

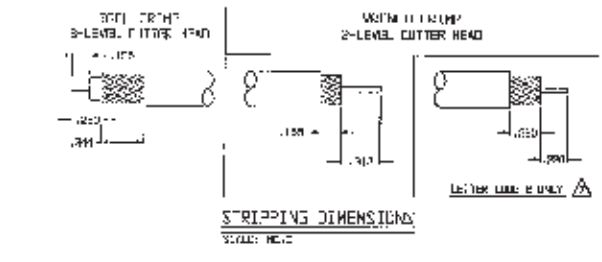
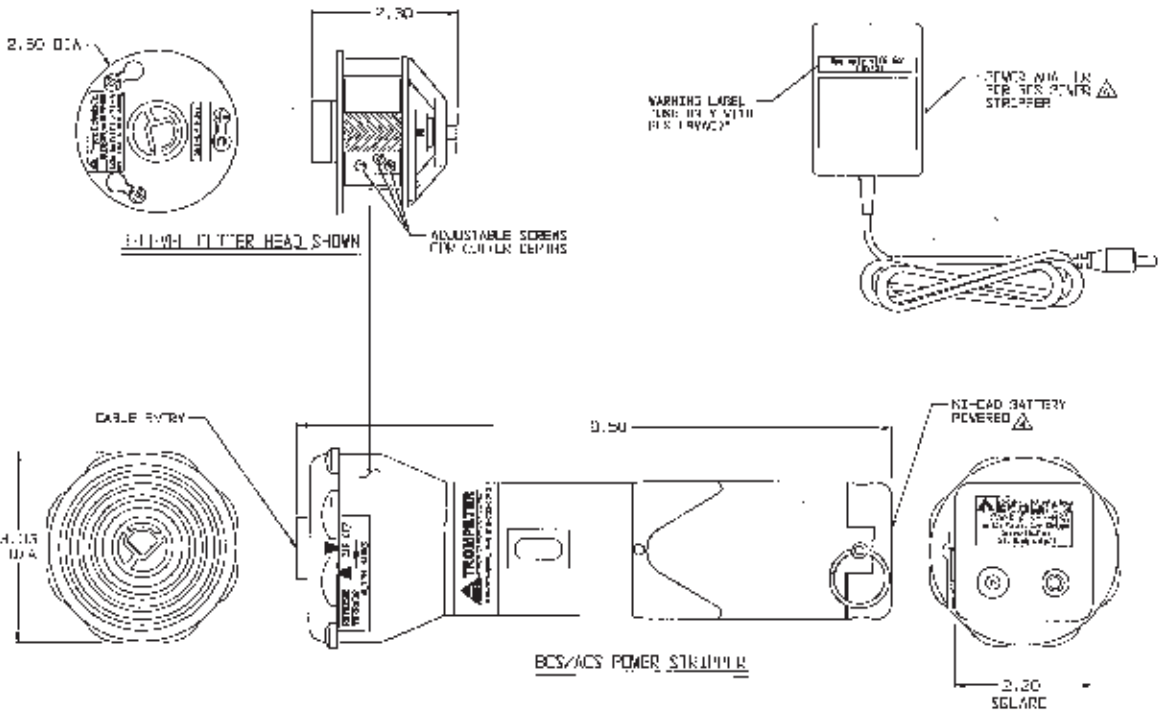
INDIVIDUAL BATTERY OR OPTIMAL POWER SOURCE MAY BE ORDERED AS SHOWN PER TABLE 2

- EXAMPLE OF LENGTHS IN INCHES
- 11.5 / 0.24 3 A
- CABLE WOUND CUTTER LEADS (SEE TABLE 1)
- 3 = 3-LEVEL FOR TOOL CRIMP
- 2 = 2-LEVEL FOR WIRE CRIMP
- CUTTER HEAD BASTI PART NO.

POWER STRIPPER INFO:

- BLS = NI-CAD BATTERY WITH AC & DC CHARGER FOR NORTH & SOUTH AMERICA
- BCS = NI-CAD BATTERY WITH AC & DC CHARGER AND RAPID CHARGER FOR NORTH & SOUTH AMERICA
- BCEU = NI-CAD BATTERY WITH AC & DC CHARGER FOR EUROPE
- BCEUK = NI-CAD BATTERY WITH AC & DC CHARGER FOR UNITED KINGDOM
- ACS = AC POWER CONVERTER FOR NORTH & SOUTH AMERICA
- ACEU = AC POWER CONVERTER FOR EUROPE
- ACEUK = AC POWER CONVERTER FOR UNITED KINGDOM

- 2. PORTABLE HAND HELD, POWERED CORDLESS STRIPPER KIT WITH AND WITH-OUT CUTTER HEAD(S), WITH OPTIMAL POWER SOURCES, SEE TABLE 2
- 1. ALL DIMENSIONS IN INCHES



TROMPETER		RF connectivity	
DATE	6/9/06	SCALE	1:1
REV	01	DATE	10-1E-03
SCALE	1:1	DATE	10-1E-03
SCALE	1:1	DATE	10-1E-03