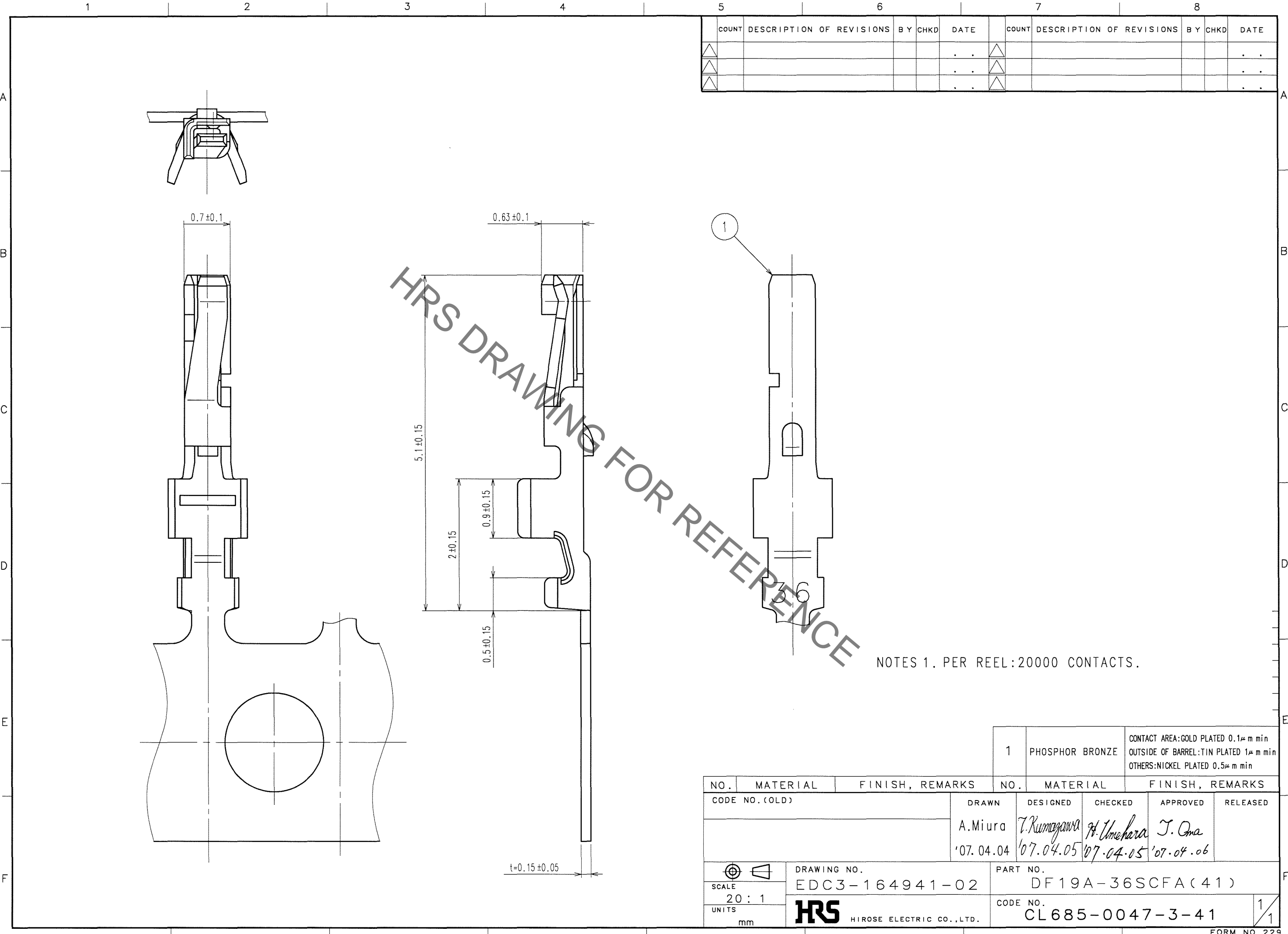


May.1.2023 Copyright 2023 HIROSE ELECTRIC CO., LTD. All Rights Reserved.  
In case of consideration for using Automotive equipment / device which demand high reliability, kindly contact our sales window correspondents.



HRS DRAWING FOR REFERENCE

NOTES 1. PER REEL: 20000 CONTACTS.

COUNT	DESCRIPTION OF REVISIONS	BY	CHKD	DATE	COUNT	DESCRIPTION OF REVISIONS	BY	CHKD	DATE
△				..	△				..
△				..	△				..
△				..	△				..

TO

1		PHOSPHOR BRONZE	CONTACT AREA: GOLD PLATED 0.1μm min OUTSIDE OF BARREL: TIN PLATED 1μm min OTHERS: NICKEL PLATED 0.5μm min			
NO.	MATERIAL	FINISH, REMARKS	NO.	MATERIAL	FINISH, REMARKS	
CODE NO. (OLD)			DRAWN	DESIGNED	CHECKED	
			A.Miura	T.Kumagawa	H.Umehara	
			'07.04.04	'07.04.05	'07.04.05	
					J.Oma	
					'07.04.06	
DRAWING NO. EDC3-164941-02		PART NO. DF19A-36SCFA(41)				
UNITS mm		HRS HIROSE ELECTRIC CO., LTD.			CODE NO. CL685-0047-3-41	
					1/1	