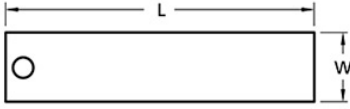




SHIM36/57-A-KIT

Ruland SHIM36/57-A-KIT, Pack of Shims for Jaw & Oldham Couplings, Aluminum, 32 Layers, 2.750 in (69.9mm) Length, 0.610" (15.5mm) Width



Description

SHIM36/57-A-KIT is a pack of aluminum shims designed to aid in the installation of Ruland manufactured zero-backlash jaw and oldham couplings. It comes with 32 layers that can be peeled off with a knife or other sharp object. Each layer is 2.750 in (69.9mm) long, 0.610" (15.5mm) wide, and .002" (.05mm) thick and made of 5052 aluminum for corrosion resistance, rigidity, and durability. It is used during the installation of Ruland zero-backlash jaw and oldham couplings with an outer diameter identifier of 36/57. SHIM36/57-A -KIT ensures proper spacing between the hubs and insert allowing the coupling to reach its full misalignment capabilities. The shim is simply slid into the space between the hub and insert while the user is tightening coupling hardware to its recommended seating torque and then removed once assembly is complete. SHIM36/57-A-KIT is manufactured by Georg Martin GmbH in Germany and RoHS3 and REACH compliant.

Product Specifications

Length (L)	2.750 in (69.9 mm)	Width (W)	0.610 in (15.49 mm)
Layer Thickness	0.002 in (0.05 mm)	Layer Thickness Tolerance	+0.0003/-0.0000 mm
Pack Thickness	0.063 in (1.6 mm)	Number of Layers	32
Weight (lbs)	0.010300	Layers Needed for Jaw Couplings	25
Layers Needed for Oldham Couplings	4	Material Specification	Aluminum Alloy 5052
Manufacturer	Georg Martin GmbH	Country of Origin	Germany
Tariff Code	7616.99.5120	UNSPC	31231404