

Customer Information Sheet

DRAWING No.: S7041-42R

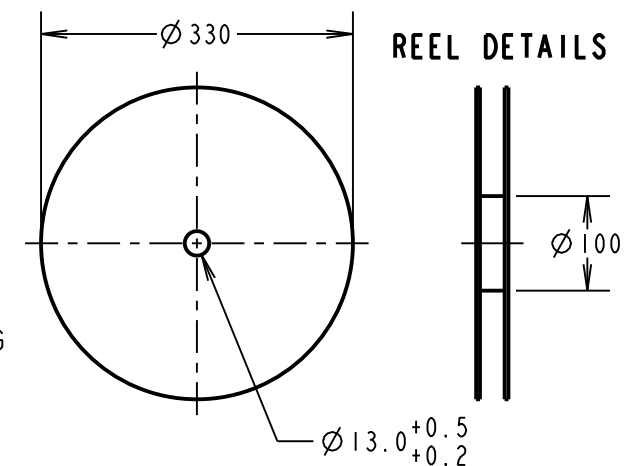
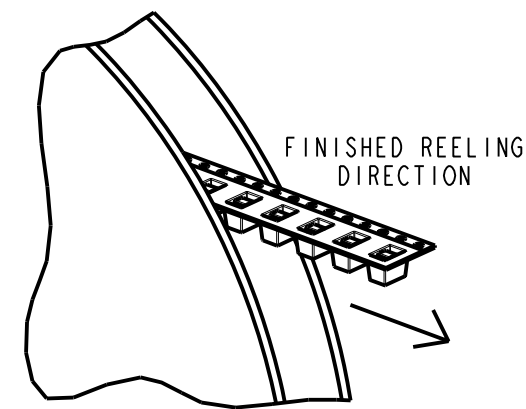
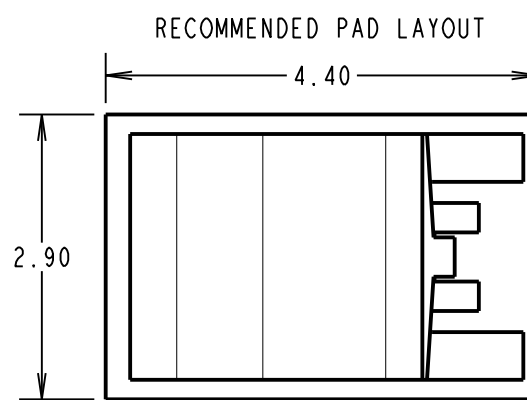
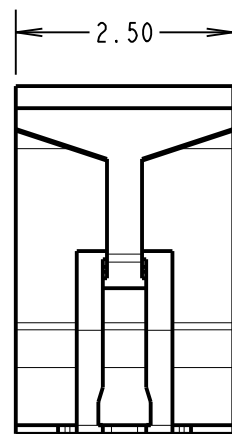
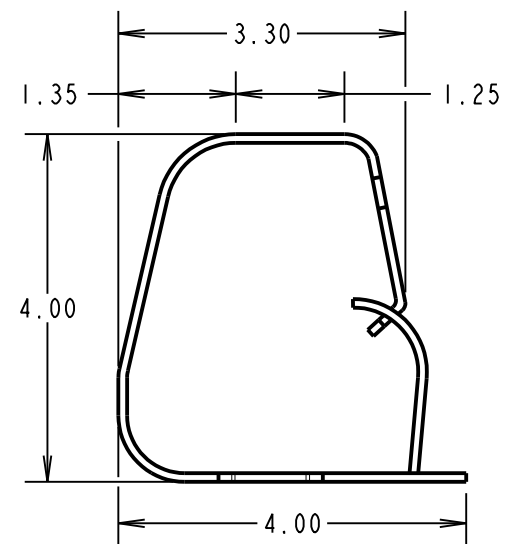
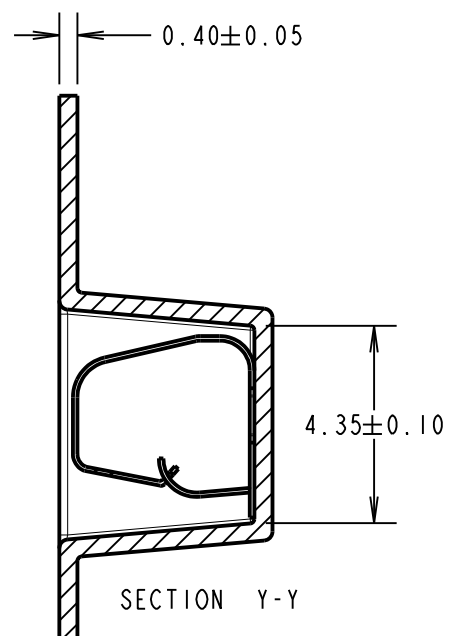
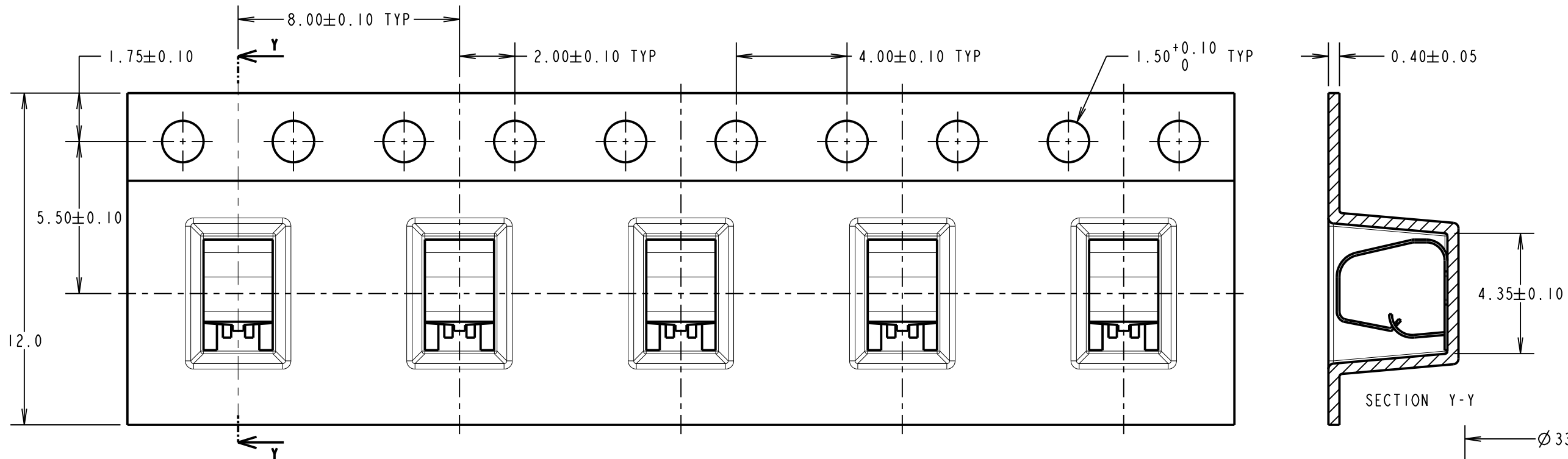
IF IN DOUBT - ASK

©

NOT TO SCALE

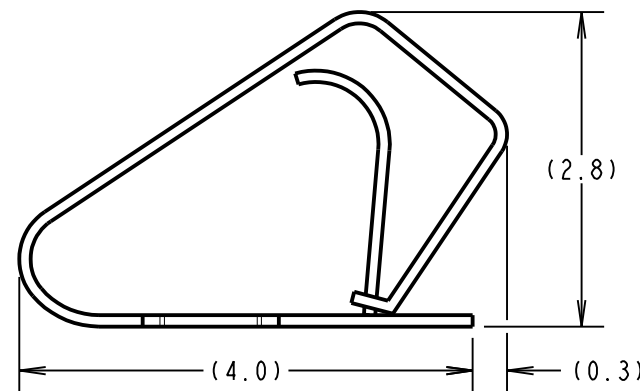
THIRD ANGLE PROJECTION

ALL DIMENSIONS IN mm



COMPONENT DETAILS

COMPONENT AT MINIMUM RECOMMENDED HEIGHT



COMPONENT SPECIFICATION

MATERIAL = TITANIUM COPPER ALLOY,
0.10mm THICK
FINISH = 0.7µm-1.3µm NICKEL, GOLD FLASH
ON CONTACT AND 2.54µm MIN 100%
MATTE TIN ON FOOT AREA.
RECOMMENDED WORKING HEIGHT = 3.40mm / MIN FORCE OF 1.2N
RECOMMENDED MINIMUM WORKING HEIGHT = 2.80mm
ELECTRICAL:
CURRENT RATING = 5A
MECHANICAL:
DURABILITY = 1500 CYCLES
ENVIRONMENTAL:
OPERATING TEMPERATURE = -55°C TO +125°C

MGP	7	22.12.21	31219
NAME	ISS.	DATE	CN/CO
APPROVED: MGP			
CHECKED: RA			
DRAWN: R.ADDE			
CUSTOMER REF.:			
ASSEMBLY DRG:			

NOTES:
1. QUANTITY PER REEL = 2000.
2. ALL TOLERANCES ARE: X.X = ±0.30mm
X.XX = ±0.15mm
UNLESS OTHERWISE STATED.

HARWIN
www.harwin.com
technical@harwin.com

THIS DRAWING AND ANY INFORMATION OR DESCRIPTIVE MATTER SET OUT HEREON ARE CONFIDENTIAL AND COPYRIGHT PROPERTY OF THE HARWIN GROUP AND MUST NOT BE DISCLOSED, LOANED, COPIED OR USED FOR MANUFACTURING, TENDERING OR FOR ANY OTHER PURPOSE WITHOUT THEIR WRITTEN PERMISSION.

TOLERANCES
X = ±1mm
X.X = ±0.50mm
X.XX = ±0.20mm
X.XXX = ±0.01mm
ANGLES = ±5°
UNLESS STATED

MATERIAL: SEE ABOVE
FINISH: SEE ABOVE
S/AREA: mm²

TITLE:
SMT SHIELD FINGER (4mm)
IN TAPE AND REEL

DRAWING NUMBER:
S7041-42R

SHT 2 OF 2